

Silver Birch Installation - cont'd from page 4 .....

Electa - Mrs. F. Bryson, P.M.; Warder - Mrs. E. Haughn and Sentinel - Mrs. K. Wepler.

A social hour climaxed a most enjoyable evening with refreshments being served by Mrs. E. Haughn as convener.

Prior to the meeting Officers and members attended dinner in the Terrace Bay Motor Hotel.

WOMEN OF THE MOOSE TO EXCHANGE GIFTS

The social service committee chairman Anne Todesco and her committee of Clara Gould, Joyce Yandon, Haddi Yandon, Bea Williams, and Marg Goodmurphy will be in charge of the Chapter Night Program to be held December 3rd.

Exchange of Christmas gifts and singing of carols are planned for the meeting.

Co-workers are asked to bring good used toys and clothing for the Christmas cheer basket.

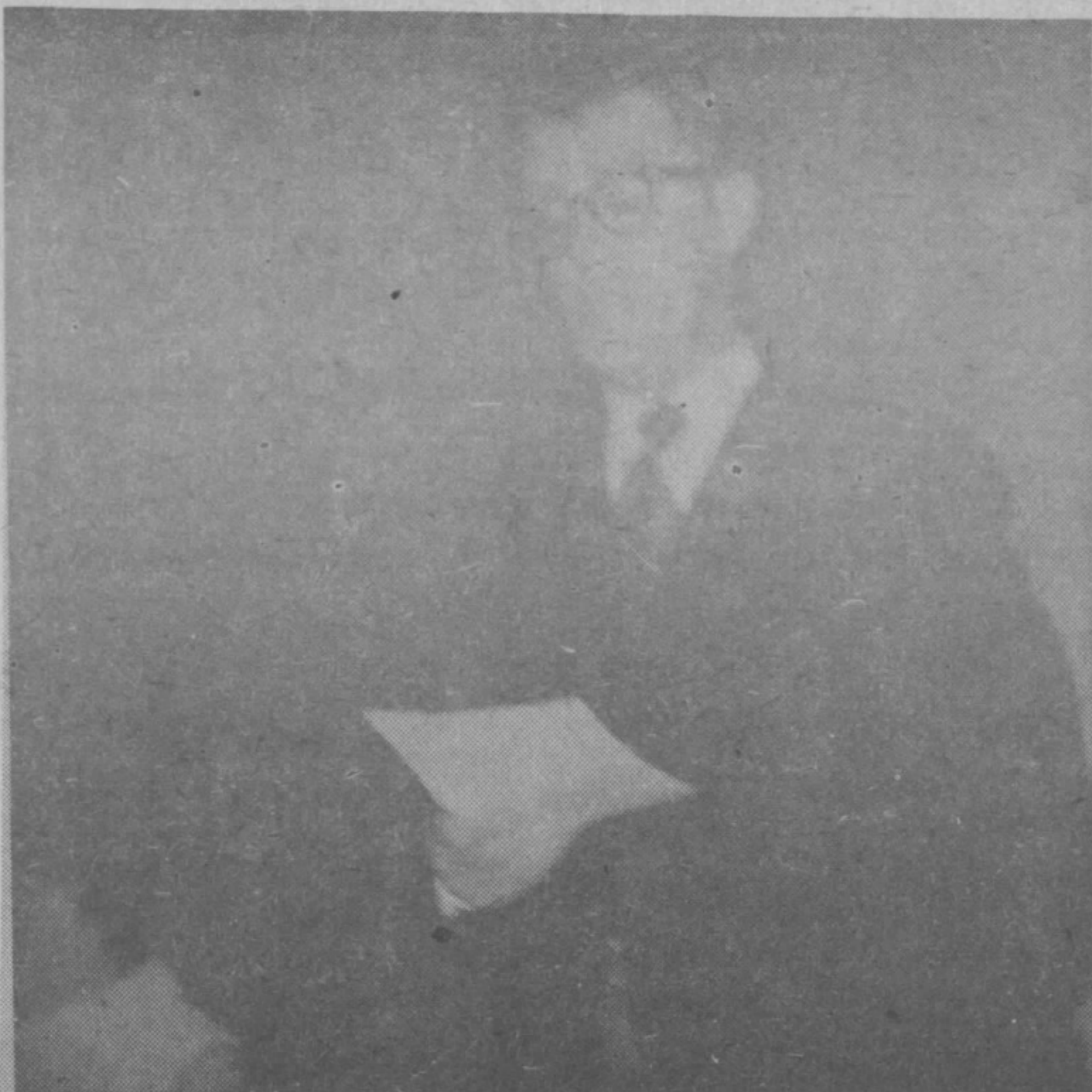
There will be a penny auction and lunch served following the meeting.

Library chairman Sadie Benko and her committee would like to thank the co-workers for the good turn out at their meeting of November 8th.

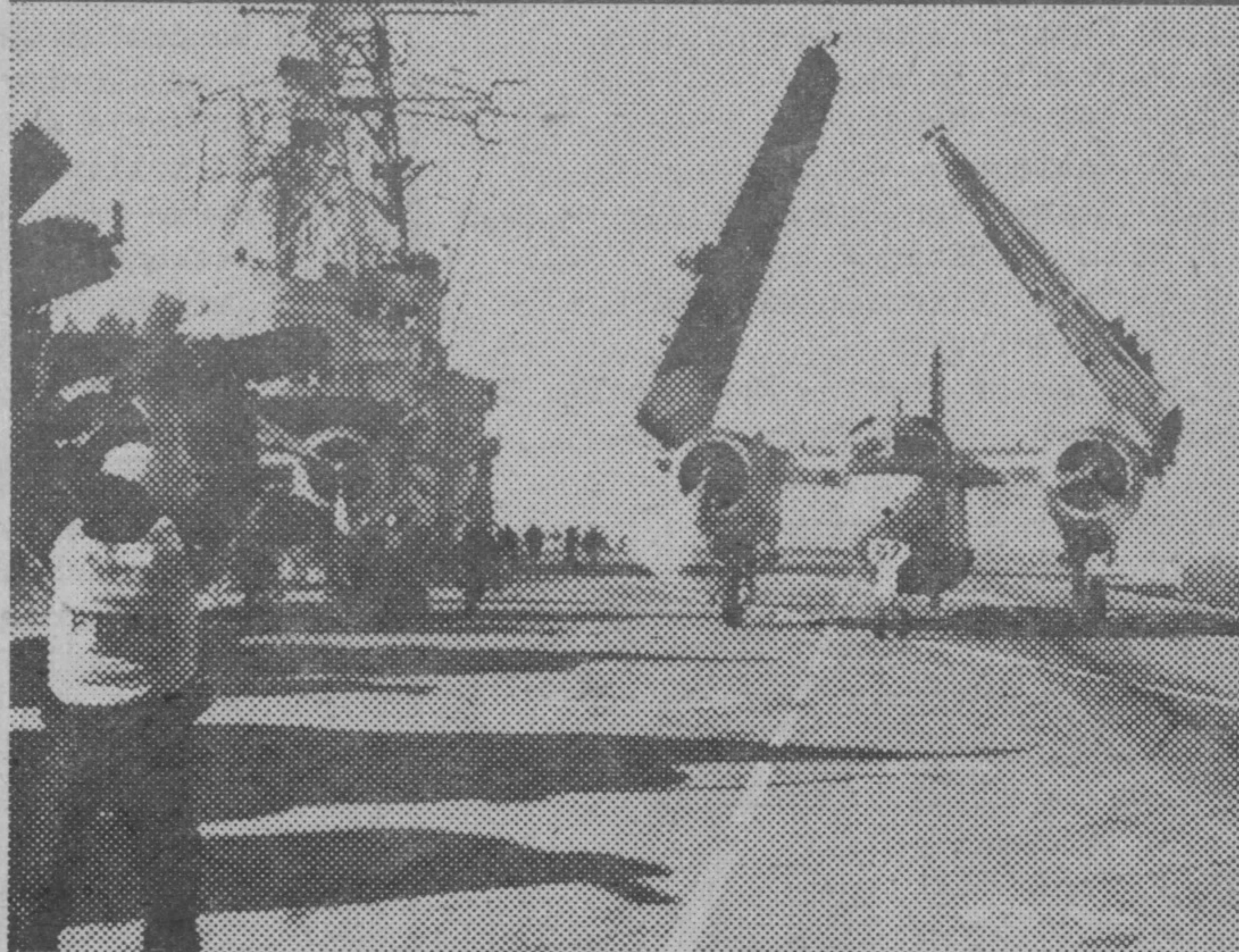
Co-worker Kay Long won the pot of gold.

Legion Dinner - cont'd from page 2 .....

Pictured below - Hugh Boudreau guest speaker at Legion Dinner; middle photo - President D. Ballentine presents cheque toward building fund to President Charlie Koski; far photo - President-elect George Churney.



**Would you believe  
there's someone  
who's interested in  
a 17 year old who's  
finished school?**



We're interested in YOU!

We're the Canadian Armed Forces and if you're willing to work hard, learn a trade, and accept some important responsibilities, we'll give you a future in security, a steady income, plus job skills you can keep forever.

For more information contact your local military career counsellor who will be at the TERRACE BAY MOTOR HOTEL from NOON to 8 P.M., on November 27 -- and at the EVERETT HOTEL MARATHON, from NOON to 8 P.M., on November 25, or write to: CANADIAN FORCES RECRUITING CENTRE, 266 GRAHAM AVE., WINNIPEG, MANITOBA.



**THE CANADIAN  
ARMED FORCES**

**Give it some thought.**