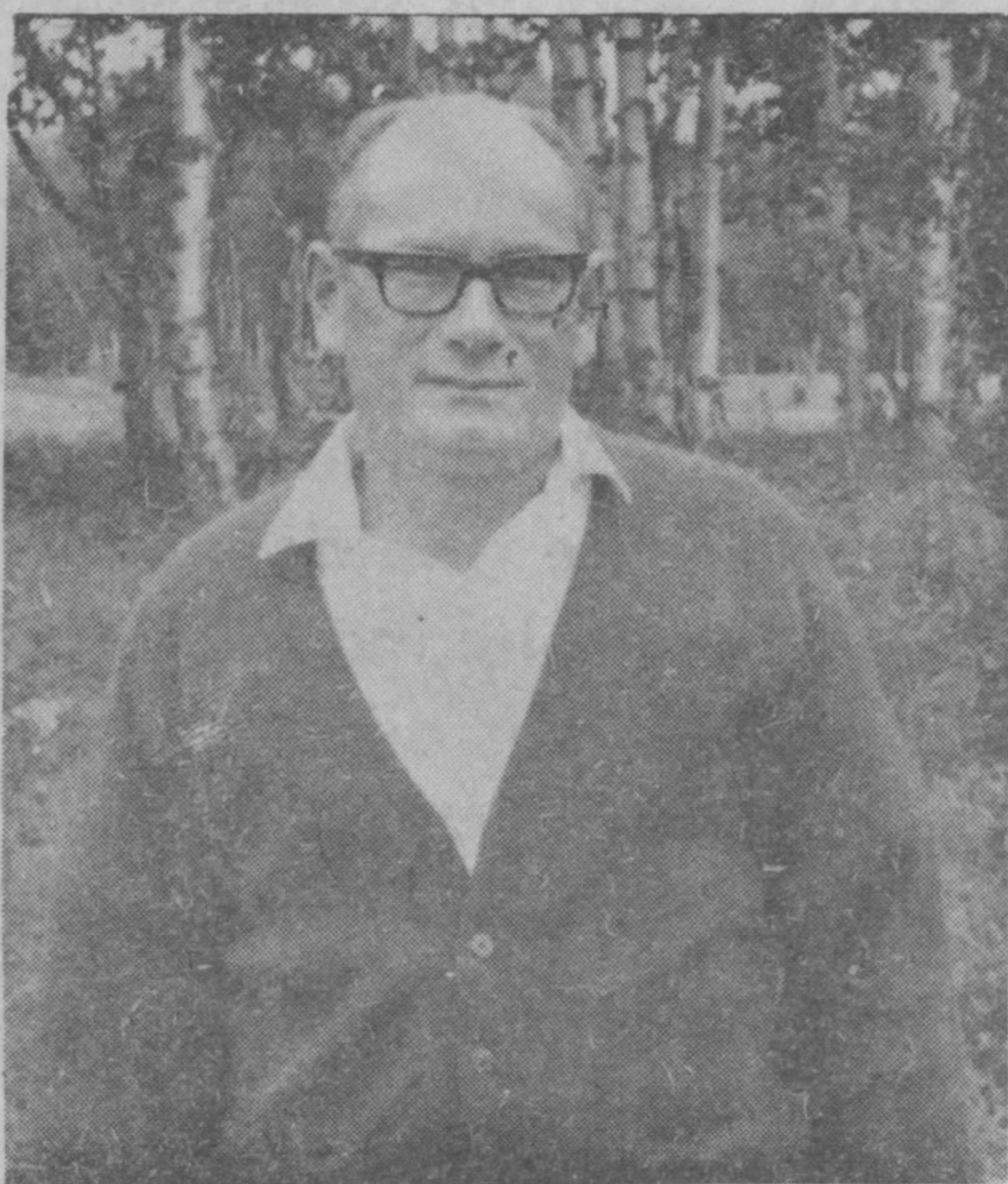


Golf News - cont'd from page 5



on the fairways and greens this year, which are now under the professional care of Roy Cornfield (in photo at left) who was head greenskeeper at the Brampton Golf and Country Club for several years before coming to Terrace Bay.

RECREATION BRIEFS - by David Courtemanche

Public Swimming - Open swimming hours this week will be from 2 to 5 p.m. and 7 - 9 p.m. (14 years or over or children accompanied by adults). There will be a session daily from 6 to 7 p.m. for adults only. If adults prefer a daily swim period of 8 to 9 p.m. please inform the Recreation Office. Our

(Cont'd on page 12)

Summer Specials July 4th, 5th & 6th Thurs., Fri., & Sat

CHILDREN'S JACKETS	GOLF CLUBS
GOLF CARTS	MENS' WALKING SHORTS
LADIES DRESSES AND BLOUSES	FISHING RODS
MENS' WINDBREAKERS	GOLF BAGS
BOYS SPORT SHIRTS	MENS' TOP COATS

1/3 OFF
reg. prices

basement bargains

MENS' DRESS SHOES - - - - **6.99**
LADIES CANVAS FOOTWEAR reg. \$4.98 **2.99**

69¢ counter SLIPPERS, SHIRTS, PANTS
DISCONTINUED LINES

KOLESAR'S

Terrace Bay, Ontario

Phone 825-3327

WANTED

CARETAKER

For
Recreation Centre

TERRACE BAY, ONTARIO

APPLY IN WRITING, STATING AGE, MARITAL STATUS AND PREVIOUS EXPERIENCE, TO

DAVID COURTEMANCHE
DIRECTOR OF RECREATION
BOX 460
TERRACE BAY, ONTARIO

ACROSS

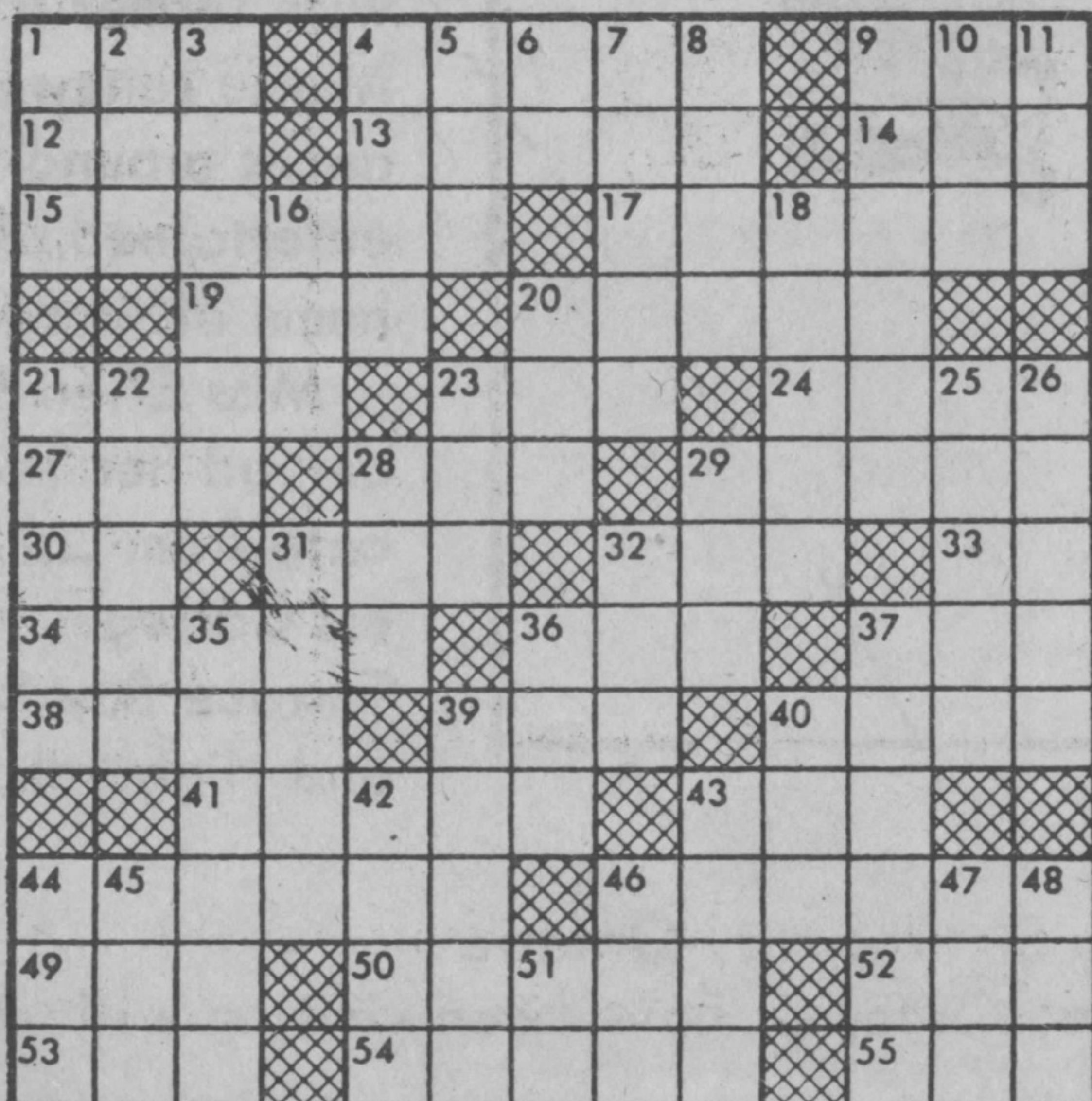
- 1-Novelty
- 4-Retail establishment
- 9-Music: as written
- 12-Caoutohouc tree
- 13-Dined
- 14-Greek letter
- 15-Rumor
- 17-Municipalities
- 19-Before
- 20-More uncouth
- 21-Poison
- 23-Evergreen tree
- 24-Keen
- 27-Ancient
- 28-Drink slowly
- 29-Showy flower
- 30-Near
- 31-Lair
- 32-Frozen water
- 33-Note of scale
- 34-Cut
- 36-Sorrow
- 37-Uncouth person
- 38-Allowance for waste
- 39-Storage box
- 40-Journey forth
- 41-Doctrine
- 43-Swiss river
- 44-Tasks
- 46-Mistakes
- 49-Fish eggs
- 50-Cubic meter
- 52-Meadow
- 53-Affirmative
- 54-Former Russian rulers
- 55-Stitch

- 5-Make lace
- 6-Old Testament (abbr.)
- 7-Happen again
- 8-Wife of Geraint
- 9-Enthusiasm
- 10-Definite article
- 11-Three-toed sloths
- 16-Native metal
- 18-Taut
- 20-Tear
- 21-Brag
- 22-Change
- 23-Fish limb
- 25-Evergreen tree
- 26-Wear away
- 28-Weight of India
- 29-High card
- 31-Hinder
- 32-Electrified particle

- 35-Rejects
- 36-Intellect
- 37-Sings
- 39-Defeats
- 40-Distant
- 42-Bird's home
- 43-War god
- 44-Sob
- 45-Garden tool
- 46-Be mistaken
- 47-Female ruff
- 48-Carpenter's tool
- 51-Babylonian deity



SOLUTION



DOWN

- 1-Animal coat
- 2-Beverage
- 3-Rely on
- 4-Withered