

District residents were shocked to learn of the sudden death of Frank Strutt, former Clerk Treasurer of the Township of Terrace Bay, in Bracebridge, Ont.

Mr. Strutt resided in Terrace Bay for nineteen years and following his retirement in 1967, made his home in Bracebridge, where he lived with his sister and brother-in-law, Mr. and Mrs. P.E. Clarke.

Attending the funeral from Terrace Bay was Mr. R. Stevens.

\*\*\*\*\*

**CROPPINGS FROM THE CO-OP**

We read with interest the current issue of Canadian Operation Co-op, the magazine published by Kimberly Clark Corporation and distributed to its employees. Front page and featured articles deal with the Charter meeting of Terrace Bays' new Quarter Century Club. While all the members to date came to Terrace Bay from other Kimberly Clark operations, it reminds us that it won't be too long before some "home-grown" members will be joining.

The meeting was held on November 14 and forty guests attended, representing both the Woodlands

and Mill Division of the Company.

Co-incidentally I was rudely awakened on the day I read the Co-op by a dull blast: my foggy brain played a trick on me and for an instant I thought I was back in the days when blasting was a frequent occurrence in town.

A photo shows the new Scout-quarters opposite the Hotel and reminded us that public acknowledgement is long overdue to the group of dedicated individuals who have worked so hard to provide this accommodation for the Cubs and Scouts, to the Kimberly-Clark Company for their part in providing the lot and building and other organizations and individuals who donated their services to make the project possible.

Now in use the building fills a need for the expanding Scout organization.

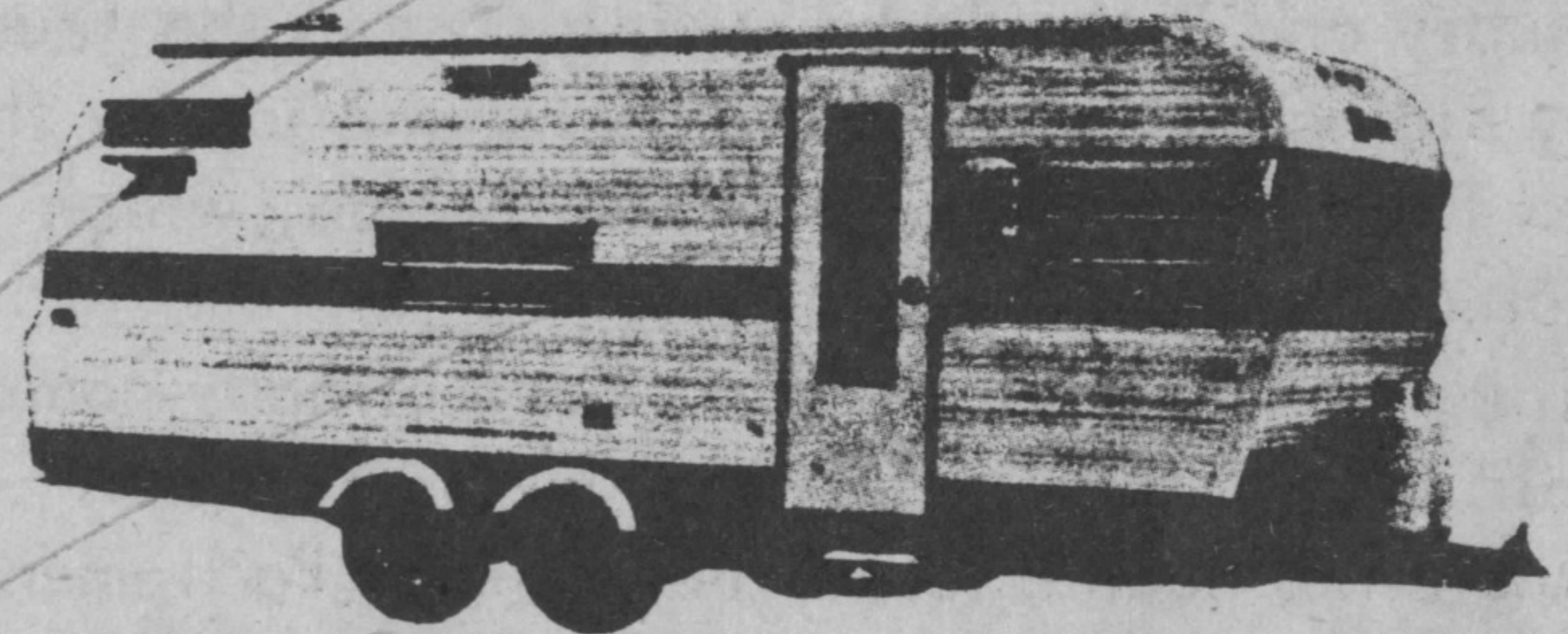
Photo's of thirty-nine new employees are also shown, we wish them well in their new jobs, congratulate Safety-Co-ordinator Verl Thompson on reaching his "20-year" service plateau and also the four steam-employees Norman Boon, Andy Miller, John Polachuk and Peter Vanderkam, who attained another certificate on their way to becoming 1st-class Stationary Engineers.

**Available NOW at ELGAR WRIGHT MOTORS LTD. in NIPIGON, MANITOUWADGE AND MARATHON**

**1968 GLENDETTE and GLENELLE TRAILERS & CAMPERS**

Tubular box steel frames aluminum enclosed for easier towing.

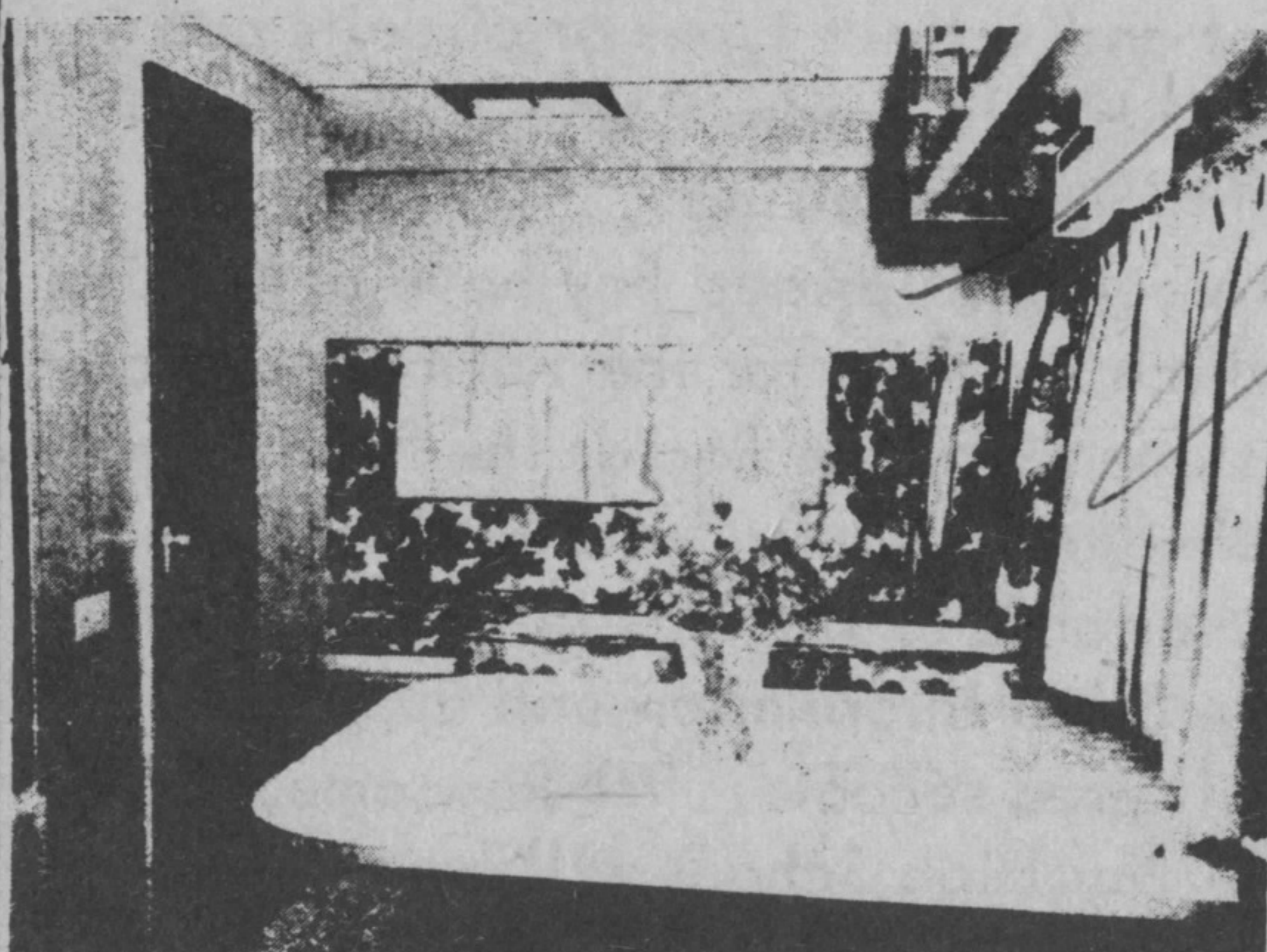
Sleeps 4. Width 8'. Length 24'6". Height 6'6". Double gas kit 3-burner range with oven. 4' elec. gas refrigerator. Tandem axle with brakes. Tires 8.25 x 14 8 ply. Toilet, Tub, Shower, Vanity sink. Medicine cabinet, razor outlet, Stove canopy with exhaust fan. Battery Case. Exterior light. 1520 International underfloor furnace with 110v/12v fan motor. Gas water heater. Air compressor. Twin stainless steel sinks. Approx. weight 4250 lbs. Approx. hitch weight 425 lbs.



GOLDEN FALCON

FOR SAFETY AND STABILITY

**G 25'R**  
GLENDETTE



**W** ELGAR  
**RIGHT**  
**M** MOTORS  
LIMITED

NIPIGON, ONTARIO

**— see them May 3,4**

AT THE SPORTSMAN'S SHOW

AT THE MANITOUWADGE

RECREATION CENTRE

& DODGE AND CRYSLER PRODUCTS