

**HELP NEEDED BY PORT COLDWELL FAMILY**

An urgent appeal was made last night at the Ladies Auxiliary meeting held at the Community Church, to aid a burned out family. A Port Coldwell family lost their entire belongings in a fire in their home Sunday night. The Ladies Auxiliary, in conjunction with the C.P. & T. of Schreiber are endeavouring to find household equipment, furniture, and linens as well as clothing for this unfortunate family.

In clothing, the sizes needed are Ladies - size 44, size 18; 14 year old girl - size 20; 5 year old girl and a 5 month old baby. Anyone who can be of assistance, is asked to call Mrs. Charlotte Slomke at 3849, Terrace Bay.

**NOTICE OF HOUSE SALE** - House #242 Kenogami Road is being offered for sale to Kimberly-Clark Pulp and Paper Company Limited, Mill Division, employees for \$5,390.00. Application to purchase must be made in person to Elizabeth Burns in J.D. Kelty's office. Deadline for applications is noon, Monday, March 18th, 1968.

**NOTE:** Since no list of prospective buyers is maintained, employees must apply each time a house is offered for sale if they wish to be considered.

**DRIVE SAFELY!**

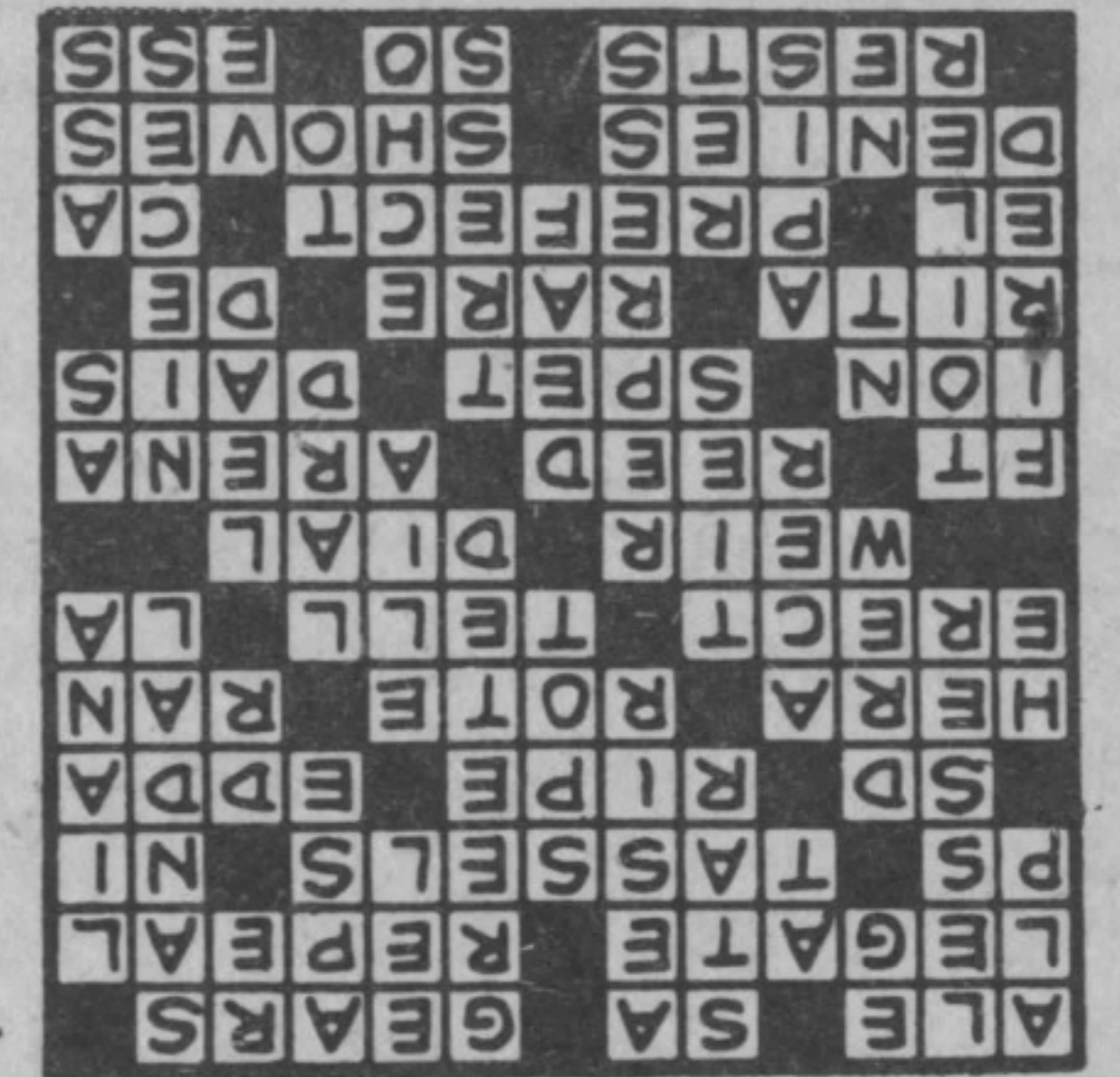
**ACROSS**

- 1-Beverage
- 4-A continent (abbr.)
- 6-Wheel teeth
- 11-Envoy
- 13-Amend
- 15-Postscript (abbr.)
- 16-Hat ornaments
- 18-Symbol for nickel
- 19-A state (abbr.)
- 21-Mature
- 22-Icelandic writing
- 24-Wife of Zeus
- 26-Repetition
- 28-Hurried
- 29-Build
- 31-Narrate
- 33-Note of scale
- 34-Fish trap
- 36-Clock face
- 38-Distance measure (abbr.)
- 40-Musical instrument
- 42-Place for combat
- 45-Electrified particle
- 47-Barracuda
- 49-Platform
- 50-Girl's name
- 52-Unusual
- 54-Prefix: down
- 55-Spanish article
- 56-Chief officer
- 59-Symbol for calcium
- 61-Negates
- 63-Pushes
- 65-Remains at ease
- 66-Conjunction
- 67-Worm

**DOWN**

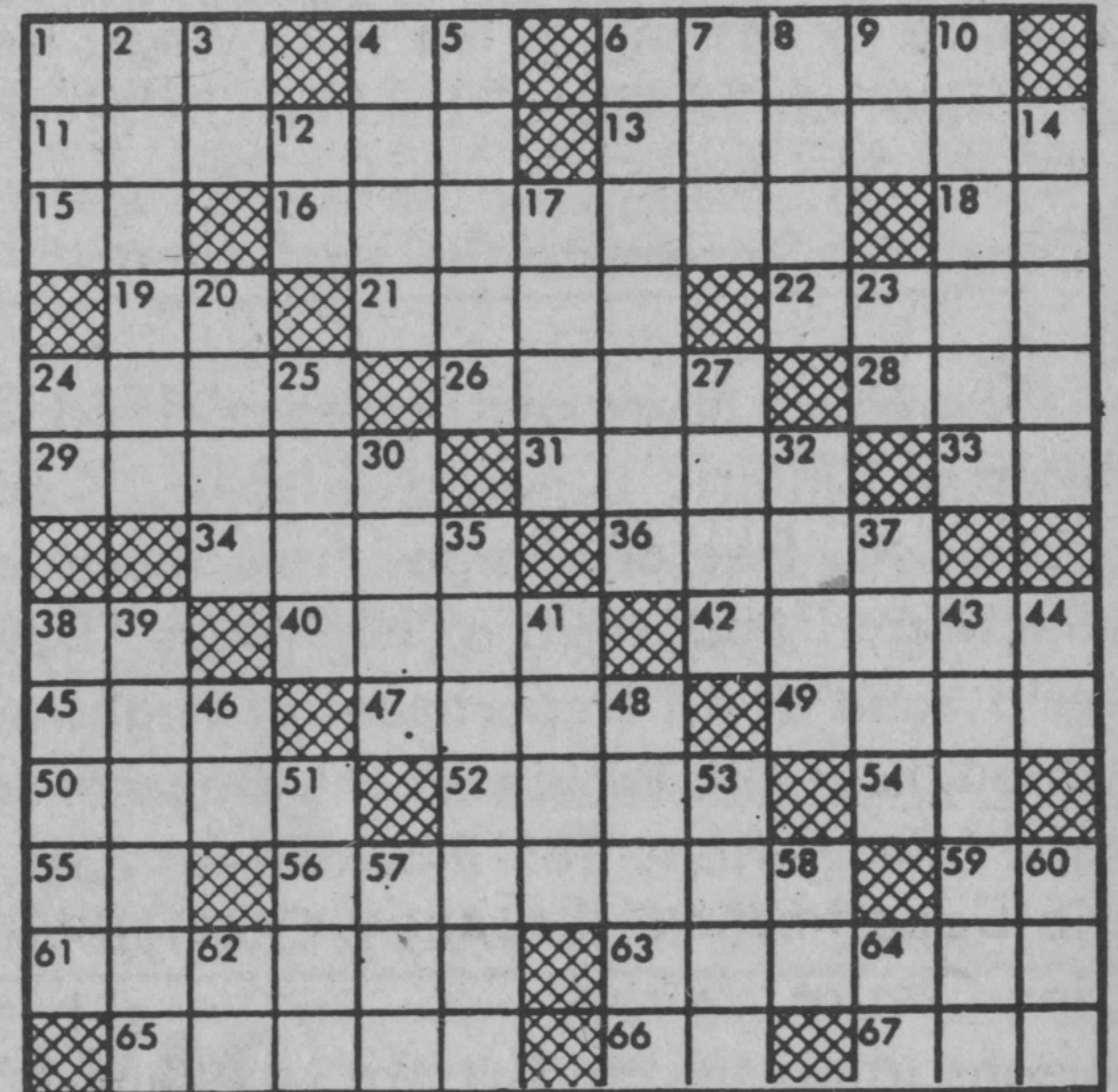
- 1-High mountain
- 2-Smaller
- 3-For example (abbr.)
- 4-Heavenly body

- 5-Norse gods
- 6-Welcomed
- 7-Lamprey
- 8-Part of church
- 9-Note of scale
- 10-Heelless shoe
- 12-Near
- 14-Climbing plant
- 17-Blemish
- 20-Delineated
- 23-Physician (abbr.)
- 24-Pronoun
- 25-Genus of maples
- 27-Lamb's pen name
- 30-Cravats
- 32-Fat of swine
- 35-Overpower
- 37-Conduct
- 38-Discharged
- 39-Laborer
- 41-Hard of hearing



**SOLUTION**

- 13-Female relatives
- 14-Conjunction
- 16-Symbol for niton
- 18-Lock of hair
- 19-Sacred bull
- 23-Reverberation
- 25-Soak
- 26-Preposition
- 28-Beast of burden
- 30-Compass point
- 32-Brother of Odin



**FINAL STANDINGS FOR NORTH WESTERN**

TEAM	PLAYED	WON	LOST
Nip-Rock Rangers	24	14	8
Schreiber Northstars	24	12	11
Geraldton Goldminers	24	8	15

**ONTARIO JUNIOR HOCKEY LEAGUE**

TIED	FOR	AGAINST	POINTS	P.I.M.
2	123	95	30	433
1	118	119	25	311
1	109	136	17	338

**TOP TEN SCORERS**

NAME	TEAM	GAMES PLAYED	GOALS	ASSISTS	POINTS	P.I.M.
W. Webb	Schreiber	23	20	25	45	45
M. Boudreau	Nip-Rock	23	25	19	44	34
Fukushima	Geraldton	24	12	29	41	4
C. Speziale	Schreiber	20	18	22	40	44
T. Black	Schreiber	16	20	18	38	6
D. Bromley	Schreiber	23	19	19	38	27
G. Boudreau	Nip-Rock	19	13	22	35	13
R. Byerley	Geraldton	23	19	15	34	57
D. MacDonald	Schreiber	19	14	18	32	8
Celinski	Nip-Rock	22	17	14	31	36

T. Wilson  
League Statistician.