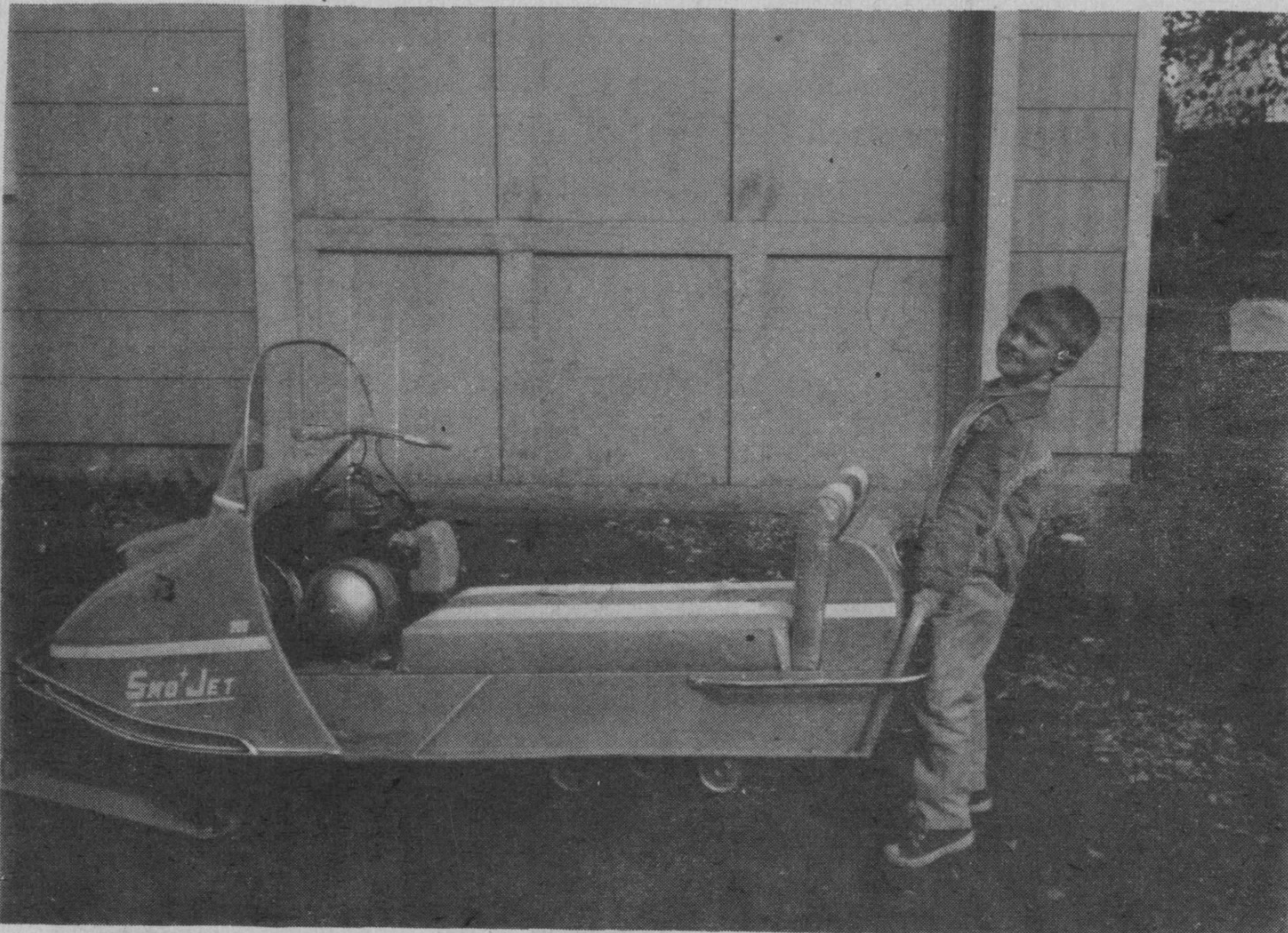


C & T MARINE

PHONE 3719

SNO-JET '68 THE LIVELIER ONE

The snowmachine with the lightest bearing surface of any narrow track machine on the market today.



15 H.P. - 300 C.C.

17.5 H.P. - 371 C.C.

20 H.P. - 400 C.C.

30 H.P. - 600 C.C.

HIRTH ENGINES

ANOTHER QUALITY PRODUCT BROUGHT TO YOU BY C & T MARINE.

BACKED BY 40 YEARS OF ENGINEERING WITH SOME OF OUR MODERN DAY DESIGNS TO MAKE IT JUST A LITTLE BETTER. SEE THEM NOW AT C & T MARINE. LET US POINT OUT TO YOU THE ADVANTAGES OF OWNING A

"SNO-JET '68" THE LIVELIER ONE!!

SNO-JETS SELL AT COMPETITIVE PRICES