

BROWNIE BANQUET (from Page 14)

Carmichael, Nora and Nancy McGuire, Darlene Fummerton, Shelley Souliere, Linda Connors, Joanne Thibault, Linda Lavigne, Terri Weaver, Gaetane Chicoine, Rita Figliomeni, Gail Bottomley, Debbie Major and Rhonda Campbell.

Skaters' proficiency badges were presented to Cathy Cocks, Gail Bottomley, and Joanne Thibault; swimmers badge to Mary Bourke; collectors to Laura Carmichael and Debbie Major; knitters to Rita Figliomeni.

Brown Owl Mrs. Giovanni Cebrario, assisted by Tawny Owl Mrs. Art Huard presented gold-

en hands to second pack members Alma Cenerelli, Elda Holland, Brenda Cebrario, Rosanne Speziale, Paula Gauthier, Linda Huard, and Denise Peras; Golden Bars to Tana Morrow, Tina Marie Cebrario, Mar Jo Ryan, Patricia McGrath, Maxine Holland, Sylvia Speziale, Karen Lamoureux, Donna Gellert, Jane Davis, Merna Gauthier, Paulette Perras, Toni Tremblay, Arline Krause; skaters' badges to Elda Holland, Brenda and Tiny Cebrario.

Tawny Owl Mrs. Ray Sisson led in a singing and special prizes were presented to Mrs. J. P. Ribout and Mary Bourke.



CGIT First Aid Presentations L.to R. Mrs. Pat Herlihy (leader), Sharon Riley, Mrs. T. Whent (leader), W.P. Burnell, Prov. Staff Officer, St. John, Nola Fummerton who topped the group in marks.

Photo by Inez McCuaig.

★ ★ ★ PICTURE-TAKING TIPS ★ ★ ★

Home movies look better if the camera. Frame your action, don't subjects do the moving, not the chase it.



fashion news BY NANCY GAYLORD

FASHION CONSULTANT TO THE 160 SINGER CENTERS IN CANADA.

Oranges and lemons, ring the colours of Spring '67. Also grapefruit, lime, pineapple and apricot in all tints and shades from frosty pales to acid brights. Makes you thirsty for some new Spring fashions.

Thanks to computers, standard sizes in ready-made clothes are just around the corner. A computer has been developed which sizes the original design, making it possible for manufacturers to have the same sizes. Mail and phone orders (gifts, too) will cease to be the gamble they are. About time!

Kind of kinky! Bulbous bloomers, all checkered-up in rust and cream seersucker, stretch to the knee beneath a straight space-tunic, side-slit to the waist. For the beach, dorm or at home. Easy care; easy wear.

Easy elegance. A simply tailored slim skirt depends on perfection of fit. Before cutting your fabric, measure your pattern at hip level. This measurement should be 1 1/2-2 inches (for a snug fit) larger than your

hips. Once you have a pattern that fits perfectly, use it over and over with different jackets and tops. Saves time and assures custom-fit.

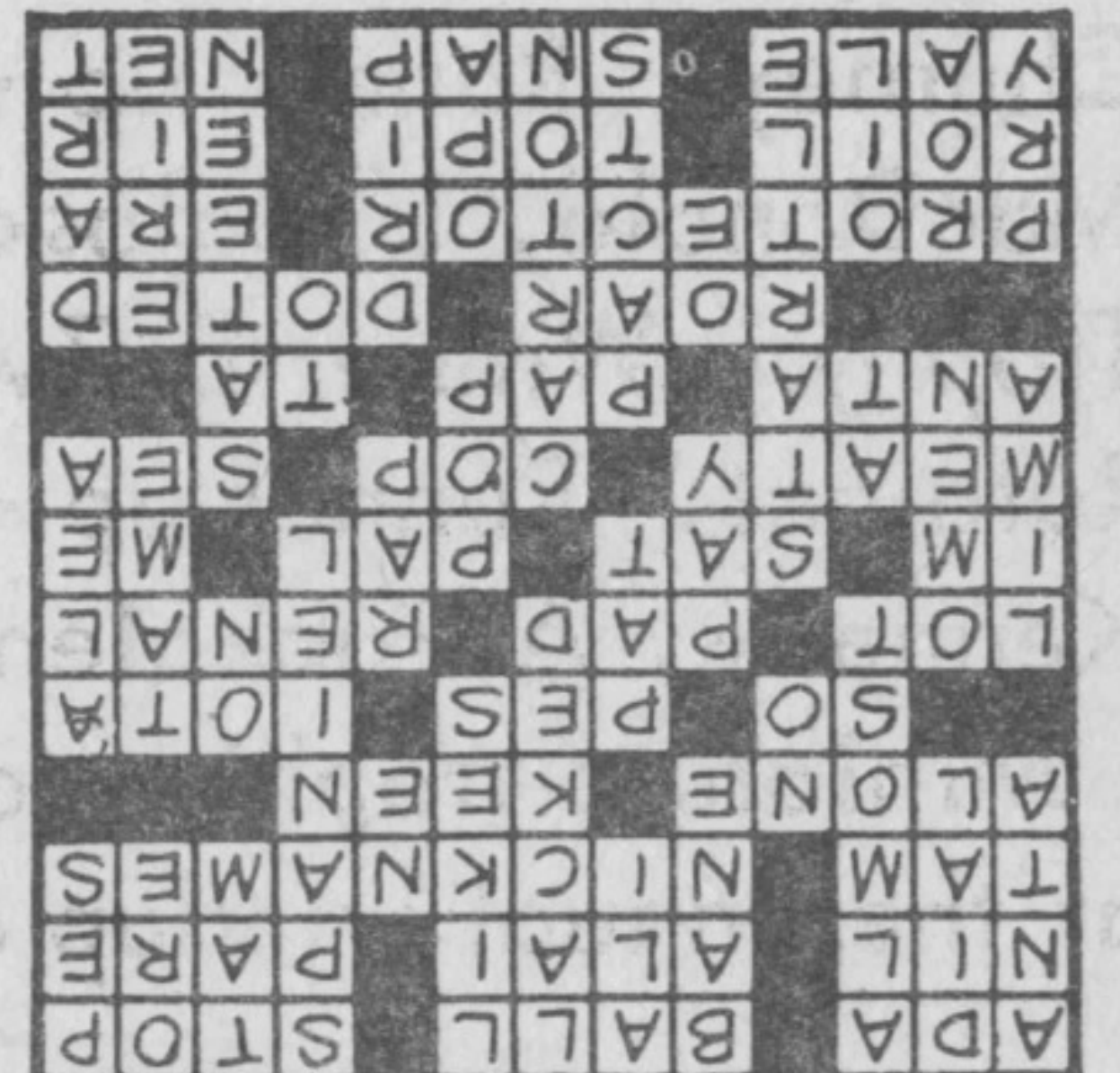
The bare essentials. Underthings have almost become "undernothings". Lingerie is stripped to the barest, smoothest, prettiest essentials. Slips are shorter; bras are barer; panties are pint-size.

A bold zig-zag in black and red stripes highlights one of Spring's newest coats. Vibrant pattern plays partner to the high-waisted look expressed in monster checks, abstract geometry, diamonds and stripes. The coat is the eye-catcher but the dress underneath carries out "the look". High waisted then flaring to an easy A silhouette, the colour is stolen from the coat motif. Often repeats of the coat fabric accent hem, yoke or collar. The big idea for '67 is to sew several dresses to go under, each a different colour in the coat fabric.

ACROSS

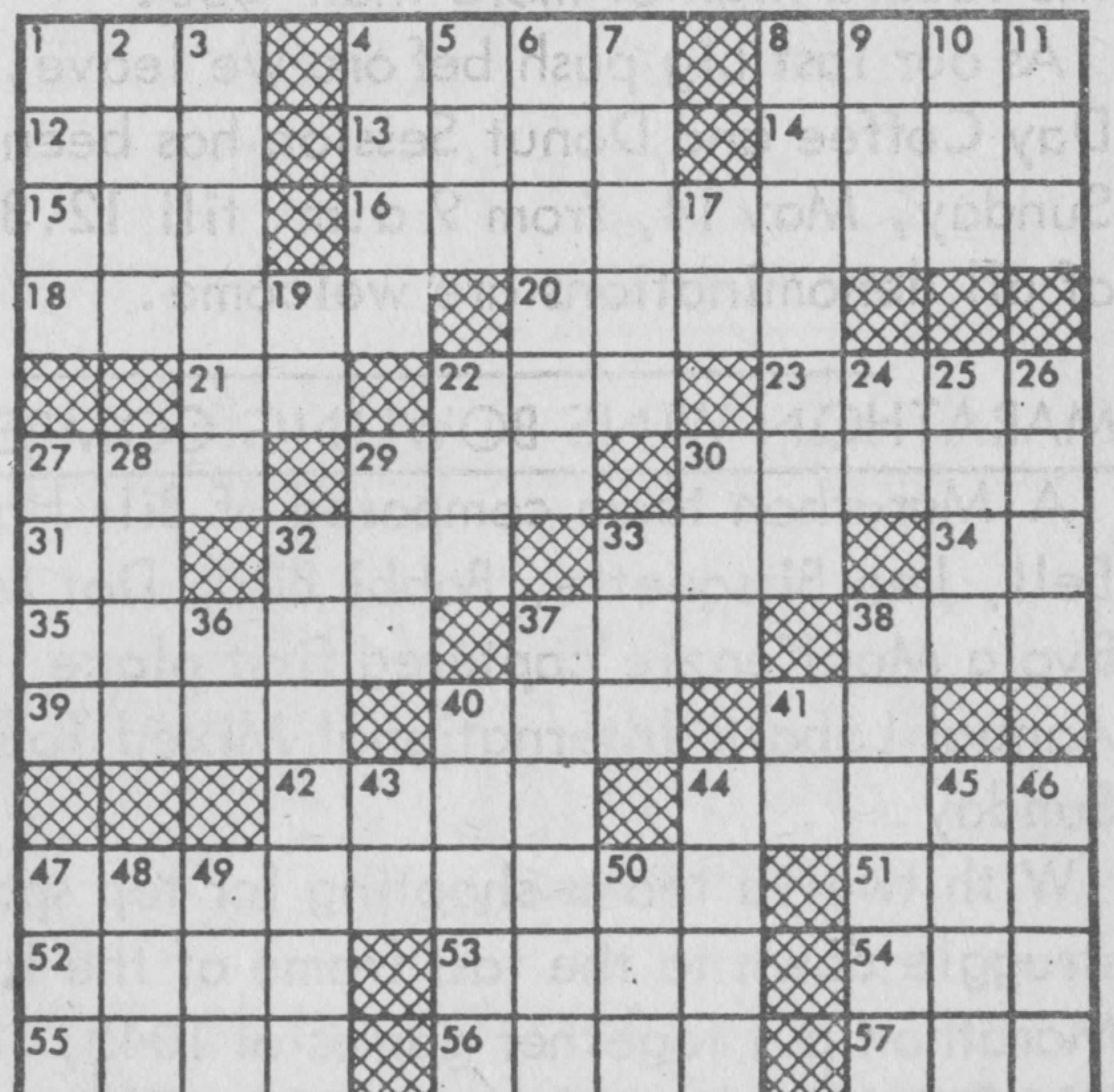
- 1-Girl's name
- 4-Spheroid
- 8-Cease
- 12-Nothing
- 13-Turkish regiment
- 14-Peel
- 15-Scottish cap
- 16-Familiar form of name (pl.)
- 18-By oneself
- 20-Sharp
- 21-Conjunction
- 22-Footlike part
- 23-Speck
- 27-Parcel of land
- 29-Cushion
- 30-Pertaining to the kidneys
- 31-Prefix: not
- 32-Posed for portrait
- 33-Crony (colloq.)
- 34-Pronoun
- 35-Fleshy
- 37-Policeman (slong)
- 38-Ocean
- 39-Pilaster
- 40-Soft food
- 41-Symbol for tantalum
- 42-Shout
- 44-Lavished fondness on
- 47-Guardian
- 51-Period of time
- 52-Irritate
- 53-Pith helmet
- 54-Goddess of healing
- 55-New England university
- 56-Break suddenly
- 57-Openwork fabric

- 5-Mohammedan name
- 6-Was destitute of
- 7-Is fond of
- 8-Breed of dog
- 9-Scottish cap
- 10-Native metal
- 11-Footlike part
- 17-Compass point
- 19-Negative
- 22-Stroke
- 24-Preposition
- 25-Domesticate
- 26-Appellation of Athena
- 27-City in Peru
- 28-Foreboding
- 29-Remuneration
- 30-Knock
- 32-Frighten
- 33-Explosive noise
- 36-Near
- 37-Container



SOLUTION

- 38-Glossy fabric
- 40-Agreements
- 41-Preposition
- 43-Faroe Is. lands whirlwind
- 44-Fall in drops
- 45-Great Lake
- 46-Arrow
- 47-Lift with lever
- 48-Brown kiwi
- 49-Lubricate
- 50-New Deal agency (init.)



DOWN

- 1-Pilaster
- 2-Face of watch
- 3-Nearly
- 4-Poison