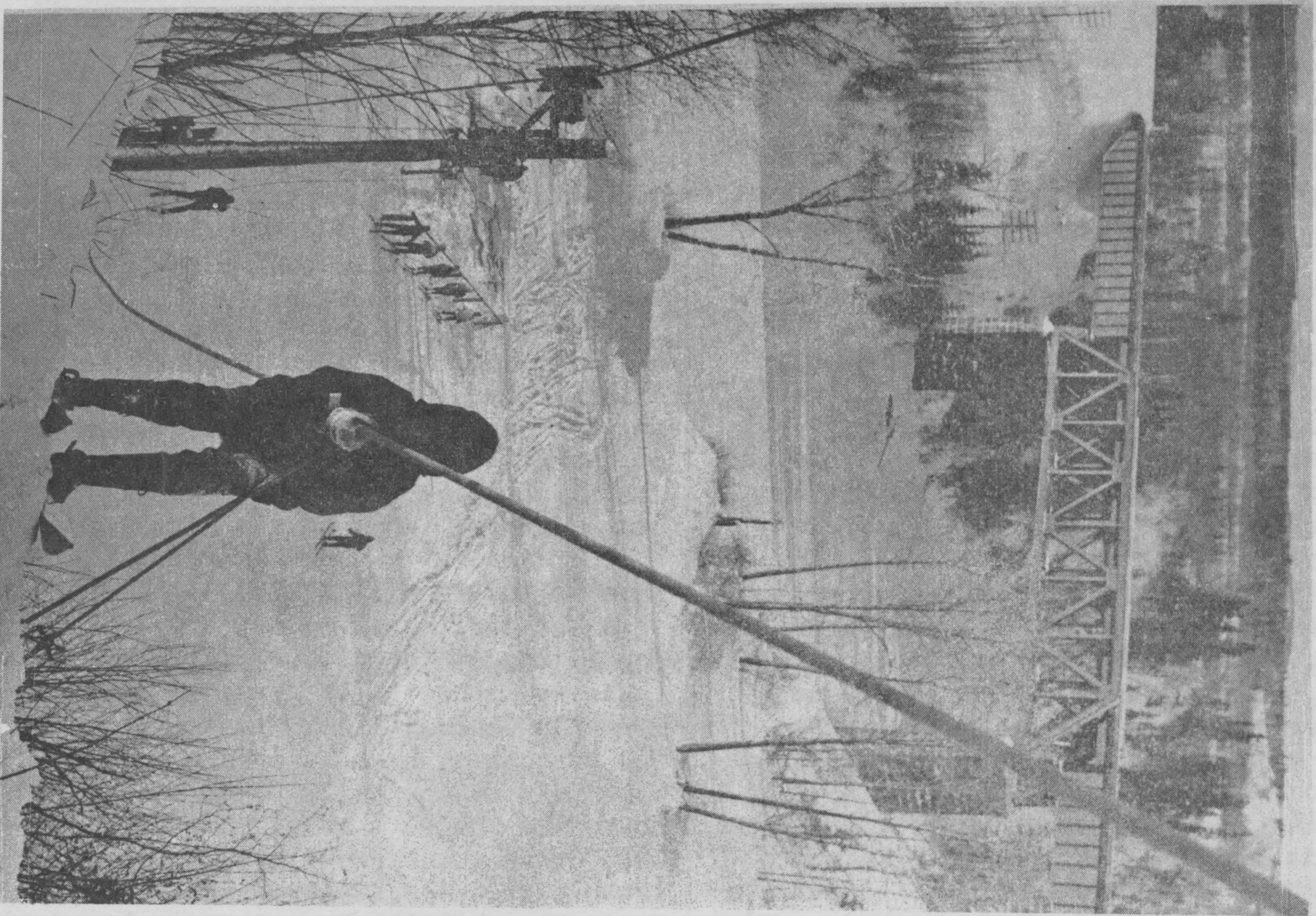


# WEEK END SKIING AT TERRACE BAY

PHOTOS BY GEORGE WHEELER



Halfway mark of Terrace Bay Ski Tow overlooks Aguasabon River. Tow is 600 Ft. long--powered by a 1950 Chev. E engine fully equipped with safety devices.



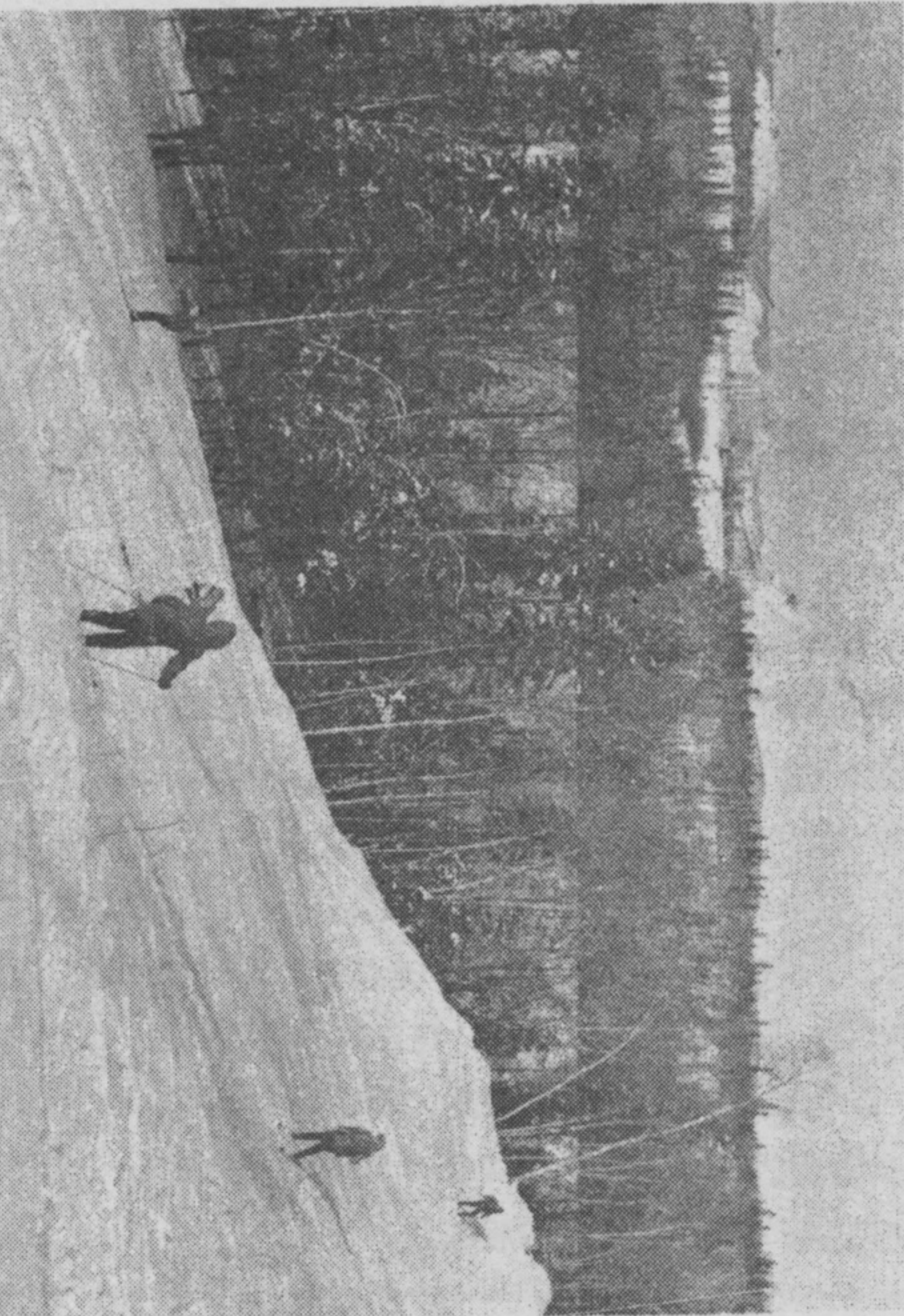
Instructor Andre Nicol executes a parallel turn in front of the clubhouse.



Instructor Andre Nicol of Ft. William, Club President Bill Megraw and Treas. G. Bird take a rest in front of Clubhouse.



A member of the Terrace Bay Ski Club shows nice form coming from one of the upper trails onto the main slalom.



Midway on the main slalom slope affords a view of the Mill.



Beginner's class under the direction of Andre Nicol practising kick-turn at bottom of beginner's hill.