

SEASON KICK-OFF PARTY!!

HALLOWE'EN MASQUERADE

FRIDAY, NOVEMBER 1ST -- 8.30 P.M.
CURLING CLUB LOUNGE ..

PRIZES REFRESHMENTS FROLIC ..
COSTUMES MUST BE WORN

MUSIC BY THE TWILIGHTERS ..

Tickets \$1.50 per couple - available from
Caccamo's - D.Knight - S.Crawford - Ken
Johnson - **EVERYONE WELCOME !!**



CURLING CLUB COMMENTARY

The Fall General Meeting of the Men's Curling Association was held in the Club Lounge, Thursday, Oct. 17th.

Membership fees for the 1963-64 season were set as follows: Full Membership - \$30., Associate Member - \$15., Student Member - \$20. The first \$10. is to be paid before first game is played. The second \$10. to be paid by Dec. 8/63 and the final \$10 by January 23/64. Commercial League members will pay full club membership this season. This league is limited to 8 teams and will play Monday evenings at 8:45. D. Whitley is accepting team entries for this league NOW. The first 8 entries will be accepted.

D. Kenney requests that regular club members fill out membership forms for the 1963-64 season. These forms are available at the mill or from him and should be returned to him by Nov. 1st. Curling should commence early Nov.

This year, the 1hr. 50 min. time rule will be strictly enforced. When the buzzer sounds teams will complete the end being played, then play one more end if necessary.

Time and place of all executive meetings will be posted on the bulletin board at the mill. All members are urged to sit in at these meetings and to take a more active part in the club as a whole.



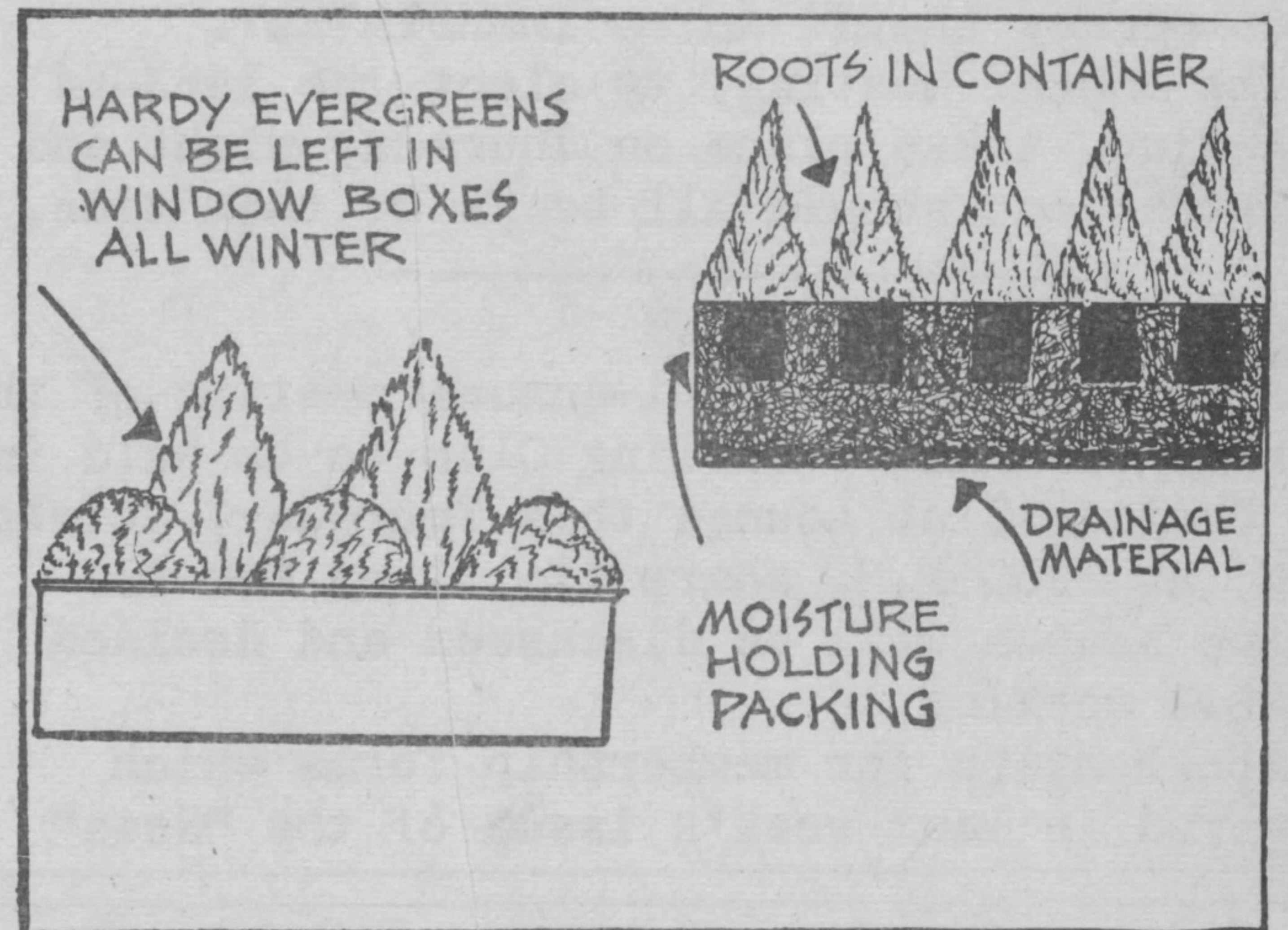
Newly elected officers of the Terrace Bay Chamber of Commerce. Seated left to right - D. Large, Sec.Treas; N. Corinthwaite, Pres; L. Waghorn, Vice-Pres. Back Row - Councillors J. Comisso, J. Caccamo, W. McMicking, L. Crandelmire, I. Marsh, T. Costa, W. Kujbida and J. Kelty.

ATTENTION LADIES

The L.A. to Minor Hockey will hold a meeting on Tuesday, November 5th at 8 P.M. in the Small Room of the Recreation Centre.

Garden Graph

By DEAN HALLIDAY



Winter Window Boxes

Window boxes add a decorative touch to the home and are especially enjoyed in the wintertime, inside as well as outside.

Window boxes can also be used in city and suburban apartment windows. They give a great deal of satisfaction to a shut-in, especially if the person is one who likes to grow things.

If you had an attractive window box this summer, dress it up with winter-hardy plants this month, or in November before the ground freezes. Empty window boxes sad looking affairs, especially so if the dead, frozen summer plants are left in it.

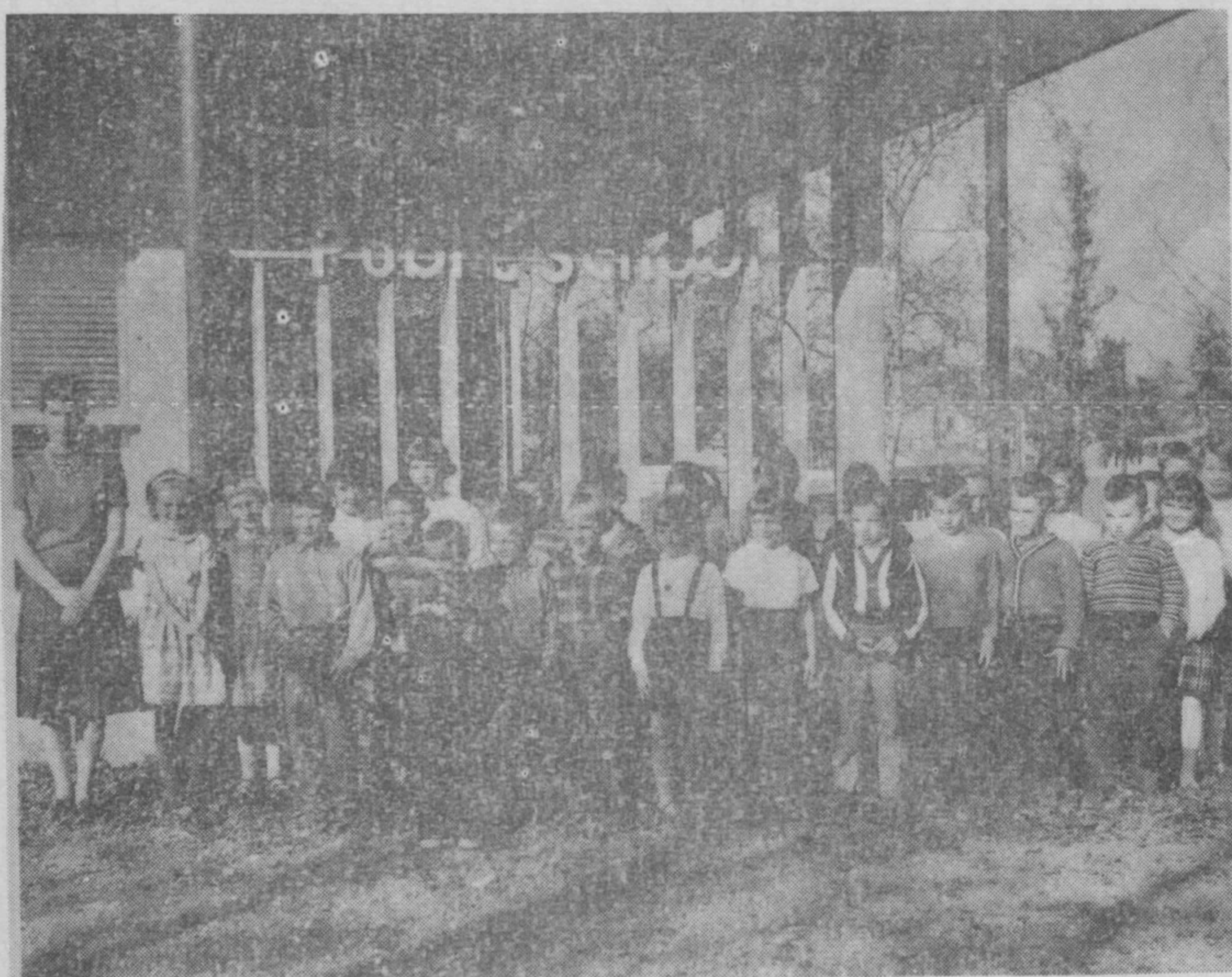
As shown in the accompanying Garden-Graph, it requires only a few small evergreens to make a lovely window box. If they are watered

thoroughly during mild spells the plants may come through the winter in fairly good condition. They could be placed about the garden next summer in a permanent location or used again next winter.

Small ilex and holly plants can be used along with dwarf evergreens and ivy.

Small evergreens purchased in pots or other containers can be used just as they are. The only disadvantage to this method is that they dry out too quickly, although this can be overcome greatly by packing moist peat, sand or, even better, paygrow around them, as shown.

Spraying the plants with wilt-pruf before freezing temperatures set in reduces moisture loss.



Mrs. C. Miller stands with her Grade 2 class who were awarded the Women's Institute Shield as the most orderly room during the evacuation in the fire drill at Terrace Bay Public School during Fire Prevention Week.