

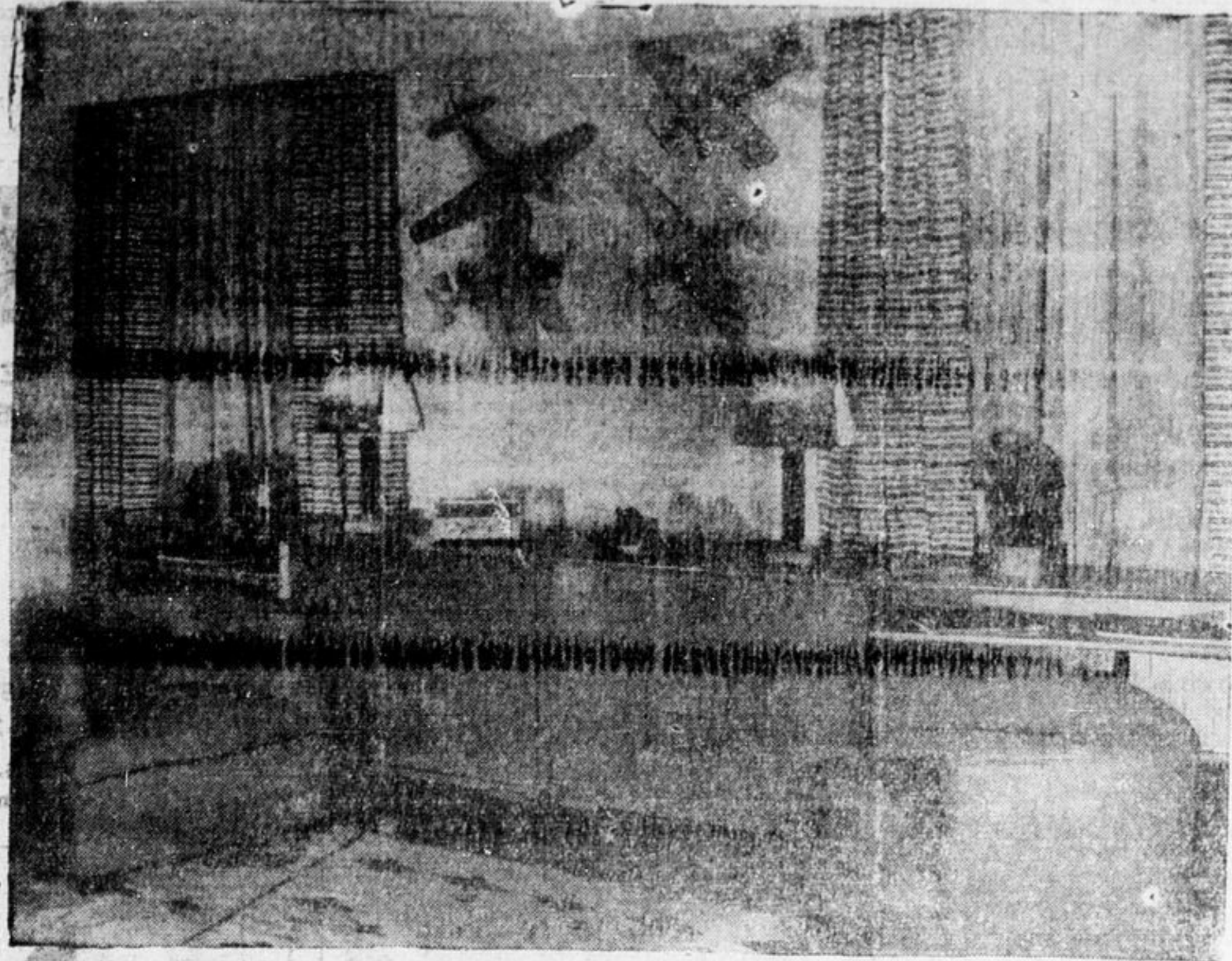


PLEASANT HOMES

by Elizabeth MacRea Boykin

IS YOUR HOUSE IN DATE?

Your Furnishings Don't Have to be Modern to be Current



Model planes for the wall decoration bring this room into to-day's scene. The Mexican rug and draperies of a hand woven Guatemalan fabric are also of current interest.

Time was when you could hide behind your out-of-date house and live in the past. But not any more. The world presses too closely about all of us now to stay out of the strong swift stream of today. Not that we should junk all our old loved furniture — no indeed. Today, of all times, we should use our old things. But use them in a current way — just as we ourselves, whatever our backgrounds, keep thinking in a current way — or should.

The Accessories Will Date the Room
You don't have to have modern furniture to keep your home looking current and in step with the times. The things that really date a room are accessories — even more than furniture — bead fringe lamp shades for instance — or those too small table lamps of the nineteen twenties. Framed etchings (unless they're really good ones and have personal meaning in your home) are apt to look dated too — so are sepia prints, Maxfield Parrish and Harrison Fisher pictures.

Pictures are divided into two categories — the enduring timeless pictures — and the current fashions. It isn't always easy to know the difference — even the learned critics get mixed up since few of us can own valuable original — we don't need to worry so much about that. If we have prints or reproductions, they can be replaced from time to time — and should be. If we own incidental originals of current artists, these can be kept hanging up as long as they seem to fit — maybe they'll turn into classic — maybe they'll turn out to be fads. As long as they belong to today, keep them no matter how old or how young they are. Above all, don't hesitate to discard what has become outdated.

The Hug-the-Wall Era
The arrangement of the furniture will give you away too — there was, for instance, that hug-the-wall period when all the furniture was pushed back against the wall — remember? And look out for your colors — is your home a hang-over from that all-taupe era or from the green-and-rust epoch that followed? And India prints may date the room too if they're used in that 1933 way.

The furniture itself can look sophisticated though it be antique or just middle-aged, providing the accessories, wall treatments and arrangements are current. First thing to do is take a stranger's eyeview — if the room looks passé, clear away the outmoded bibelots, re-

arrange the furniture in today's way, treat yourself to a contemporary color scheme. Then add things of current interest — maps and globes for instance, and perhaps a framed front page of the newspaper on a particularly significant day in contemporary history or recent with Chinese things — an ancestor portrait, a screen, Chinese ornaments. Or consider Mexican or South American details — rugs, tinware, pottery, fabrics for introducing timely notes. Planes, tanks, guns, submarines, ships are the in-crest of the day, so if anybody in the family makes a collection of such like, either in models or prints, use these for wall or mantel decoration. Better far to have a model plane for your over-mantel — that really means something to the family — than a picture that no one cares about.

Collectables
For that matter there's nothing like any active collection for keeping a room up-to-date. Doesn't make so much difference what you collect, so long as it's hang-up-able — it will probably be interesting to use on walls, wall shelves or brackets, in cupboards, on tables, Russian icons, Norwegian wood carvings or embroideries, Swedish glass, French china, colonial pewter, early American glass or whatever — these are all very ornamental collectables. Old train prints or models, fans, dolls, keys, clocks, tea cups, tins, all make provocative ornaments for your room if you arrange them interestingly. The reason a going collection is bound to be current even if it's technically old stuff is that it's always being added to and changed.

Another way to keep a room current is to use current editions of fabrics and wall paper. You can do this without too much risk for these are the things that are changed oftener than furniture.

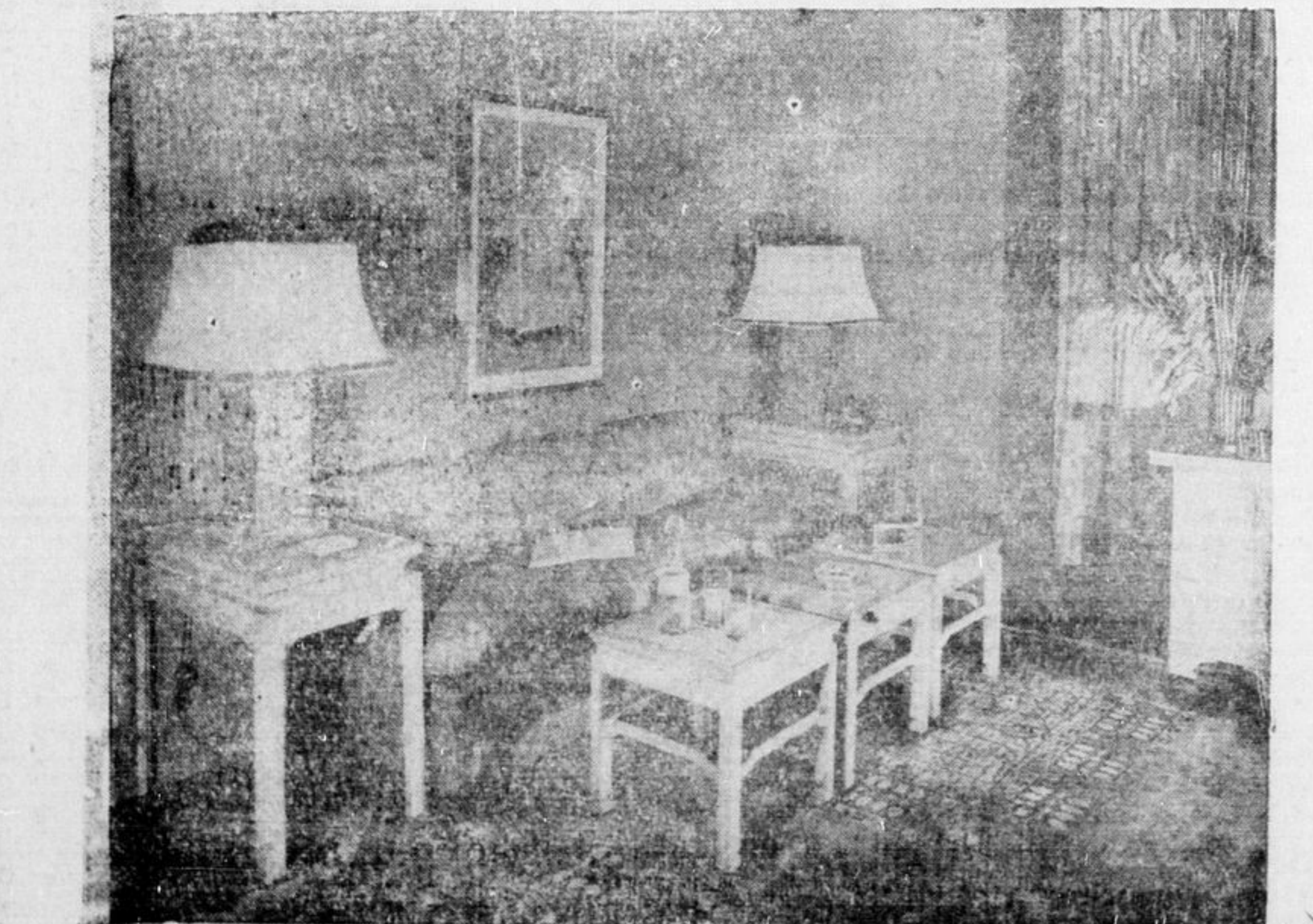
(Released by the Consolidated News Features, Inc.)

LOUD CHEERS

In a movie theatre in Oporto, Portugal, a newsreel showed German mechanized forces. The audience watched in stony silence then came a film of the British navy in action.

The audience stirred uneasily; Portuguese were expected to be neutral.

Suddenly someone shouted: "Three cheers for the Oporto football club!" Cheers broke out and continued to the end of the film. — North Bay Nugget.



A Chinese ancestor portrait in this room is a current comment on the day's events.

Twenty Years Ago

(From the Porcupine Advance Files)

Twenty years ago the town council decided to take effective measures to guard against any further accidents at the McIntyre hill. In the following out of this idea, a substantial railing was erected along the side of the hill to lessen the chances of further accidents. Another matter touched upon at the council meeting was the question of the respective liabilities and responsibility of the town and the township in regard to the incinerator. The town's share was quoted at 75 per cent for maintenance and the township's was 25 per cent. The township was turning over the fire hall in Moneta to the town as part of the annexation agreement, the township, only asking that Constable Raycroft be allowed to use the residence part of the building for a month longer. Mayor Dr. McInnis thanked the 1923 councillors for the good service given the town, the retiring councillors, L. S. Newton, J. E. Sullivan and J. E. Morin, coming in for special commendation for the good work given the town in previous years.

"Hogmanay" was fittingly observed by the Caledonian Society on New Year's Eve in the Oddfellows' hall twenty years ago. President D. Mackie was in the chair and five new members were welcomed to the society. P. Macaulay, chairman of the committee in charge of the programme for Hogmanay, was asked to take the chair and the evening was one of special excellence. A duet by Misses Fern and Ruby McCarthy was a selection of special charm and appeal. Miss Ruby McCarthy played the piano accompaniment for the first number while Miss Fern McCarthy played the piano accompaniment for the encore demanded. Mrs. U. L. Acton's solos were greatly appreciated as were also the solos by Miss Jean Roberts, James Elick, Jas. Geils, Jas. Cowan and others. A violin selection by Mr. Simard was one of the special numbers of the evening. In addition to the musical and literary programme there was dancing the Old Land dances such as the Eightsome reel and others. The lunch was a very fine one and the whole evening a happy one. An extra special feature was the interesting address on "Hogmanay" by P. Macaulay.

Constable D. Marten and Provincial Officer Fred Simpson had a lively time on Christmas Day, 1923. They had a call from Moneta concerning two very drunk and disorderly men, and on trying to arrest them, the men started to yell for help and eventually twenty-five or thirty men tackled the two officers. Constable Marten broke his billy on the heads of some of the toughs and at one time had eight men down. Eventually however he had to retire, he and Provincial Officer Simpson escaping without any injury. There were a lot of sore heads left in the crowd, however. Later, in police court, the toughs paid again for their interference with the law.

Twenty years ago The Advance published a picture of Alex Gillies and Ben Hollinger standing in front of their cabin in the early days before there was a Timmins. The cabin stood just about where the main shaft of the Hollinger was later located.

On Christmas Eve, 1923, H. F. Schroeder and Mrs. Schroeder were presented with valuable gifts from their pupils as a mark of appreciation and regard. The Advance noted twenty years ago that Tommy Church had been defeated for mayor in Toronto, but Dr. McInnis was again mayor of Timmins by acclamation.

Herman Niemi, milkman, met death by drowning in the Mattagami river on Dec. 8th, 1923. He was crossing on the water and drowned before help could reach him. He was well known and highly respected in the district and his death was much regretted. A widow and several children were left to mourn his loss.

Twenty years ago Hollinger pay days were on alternate Thursdays.

Among the local and personal items in The Advance twenty years ago were the following: "Born — In Timmins, on Sunday, Dec. 30th, 1923, to Mr. and Mrs. H. McCulloch — a son." "Mrs. Clark, of Toronto, is visiting her parents, Mr. and Mrs. J. E. Boyle, of South Porcupine." "Miss Mary Bridger and her cousin, Miss Jenkins, of Toronto, are spending a week at Schumacher and Timmins the guests of friends." "Miss Blanche and Master Roger Courtemanche are home from the Sacred Heart College at Sudbury for the holiday season." "R. LeHeup of Haileybury, Inspector for the Children's Aid Society, was the speaker at the Kiwanis Club luncheon on Thursday last. Mr. LeHeup gave a very interesting and inspiring address on the C.A.S. work. Police Magistrate S. Atkinson will be the guest of the Kiwanis Club next week at the regular luncheon." "On Sunday the firemen had no less than three calls, none of them, however, turning out to be actual fires. They were only chimney blazes in two cases. The other alarm was a call to F. M. Burke's home. The reflection from an open grate shining upon the glass of the sun parlour made a striking representation of what appeared from a distance to be a very big fire at Mr. Burke's." "The country north of Cochrane on the T.&N.O. extension is reported as being overrun with wolves. A large number of big packs have been sighted by some trappers. The wolves have kept away so far from human beings, but have tackled moose on one or two occasions." "There are quite a number of cases of measles in town but fortunately the disease is of a mild type." "Mrs. M. Sally, is visiting at Ottawa and other points east." "W. H. Hooker is spending the holidays at his home in Galt." "Mrs. Fred Hornby and son left on Saturday for Haileybury to spend New Year's at Mr. E. Hornby's."

"For the first time in 40 years Lake Temiskaming was open on Christmas Day, 1923." "Unusually good progress is being made in the construction of the new high school here." "Born — in Timmins, on Wednesday, Jan. 2nd, 1924, to Mr. and Mrs. Wm. Lainsbury, 14 Balsam St. — a daughter." "This is leap year. A Parisian prophecy foretells great disasters for the world during the year. Another prophet says it will be a wonderfully good year. Both are likely to be right in part." "The new rink at South Porcupine is now in active operation and is proving a very desirable and valuable acquisition to the town. A large board fence keeps the wind from the ice surface and protects from drifting snow. Good dressing rooms have been erected alongside the rink." "The Timmins high and public schools re-open on Monday, Jan. 7th." "F. J. Wolno, bandmaster of the Timmins Citizen's Band, left on Friday last for Montreal, where he will be married to-day." "Geo. Bannerman, of Porcupine, was called to St. Mary's Ont. last week on account of the death of his sister." "Miss K. Goodheart, of Buffalo, is spending a couple of months' vacation with her sister, Mrs. Dawson Schumacher." "Misses Mary and Loretta Mascioli and Master Dan Mascioli are home from their school studies in Montreal to spend the holidays with their father, Leo Mascioli." "Harry Stuckey visited friends at Haileybury during the holidays."

A Soldier's Prayer

A friend of The Advance has loaned a copy of "The Red Patch," the newspaper of the First Canadian Division — Central Mediterranean Force. The issue is No. 2 of Vol. 2. In this issue will be found some excerpts from this little newspaper. The following poem, published by request, is given a separate place:—

A Soldier . . . His Prayer
Stay with me, God, the night is dark;
The night is cold; my little spark
Of courage dies. The night is long,
Be with me, God, and make me strong.

I'm but the son my mother bore,
A simple man and nothing more.
But . . . God of strength and gentleness,
Be pleased to make me nothing else.

Toronto Telegram:— Facts are stubborn things, but not nearly so stubborn as some people.

On Executive of Assn. Professional Engineers

Toronto, Jan. 5th.— M. J. Aykroyd, B.Sc., Outside Plant Engineer, Bell Telephone Co., Toronto, has been elected President of the Association of Professional Engineers of Ontario for the year 1944. He succeeds R. A. Elliott, B.Sc., General Manager of the Deloro Smelting & Refining Co. Ltd., Deloro. J. L. Lang, B.A.Sc., Lang & Ross, Sault Ste. Marie has been elected Vice-President. Other members elected to the Council of the Association are as follows:—

Civil Branch—D. S. Ellis, M.A., B.Sc., M.C.E., Dean, Faculty of Applied Science, Queen's University, Kingston; M. W. Higgins, M.A.Sc., Asst. Professor of Civil Engineering, University of Toronto, Toronto.
Chemical & Metallurgical Branch—W. J. Cook, B.A.Sc., Asst. Supt., International Nickel Co. Ltd., Port Colborne; G. L. Macpherson, B.A.Sc., Chief Engineer, Imperial Oil Ltd., Sarnia.
Electrical Branch—E. V. Buchanan, A.R.T.C., General Manager, Public Utilities Commission & London Railway Commission, London; J. H. Smith, B.Sc., Engineer, Electrical Construction

Sales, Canadian General Electric Co. Ltd., Toronto.
Mechanical Branch—G. Ross Lord, B.A.Sc., Chief Engineer, Babcock & Wilcox & Goldie-McCulloch Ltd., Galt.
Mining Branch—J. Beattie, M.A.Sc., Manager, Delhite Mines Ltd., Timmins; G. B. Langford, B.A.Sc., Ph.D., Professor of Mining Geology University of Toronto, Toronto.

Toronto Telegram: Industrial leader says a new device plucks and dresses a hen for roasting in less than 10 seconds. Inventor got the idea, we believe, after watching operations in the income tax office.

Treasurer's Sale of Lands for Arrears of Taxes Township of Whitney, District of Cochrane

TO WIT:

BY VIRTUE OF A WARRANT issued by the Reeve of the Township of Whitney, bearing date the 20th day of September, 1943, and to me directed, commanding me to levy upon the several lands being in the Township of Whitney, mentioned and described in the following list of arrears respectively due thereon and costs.

I hereby give notice, pursuant to the Assessment Act and amendments, that unless the said arrears of taxes and costs are sooner paid, I shall on Tuesday, February 15th, 1944 at the Township Hall, at Porcupine, at 10 a.m., proceed to sell by public auction so much of the said lands as may be sufficient to discharge the taxes and lawful costs incurred in and about the sale and collection of same.

The following lands are all patented.

DATED at Porcupine this 24th day of September, 1943.

NAME AND LOCATION	Years In Arrears	Taxes	Commis.	Costs	Total
1. Frank H. Bailey, 2 1/2 Third Avenue, Timmins, Ontario	1940 to 1943	95.17	2.38	2.70	100.25
2. Frank H. Bailey, 2 1/2 Third Avenue, Timmins Ontario	1940 to 1943	16.29	.41	2.70	19.40
3. Simon Bassett, Timmins, Ont. (M. Gauthier Holding Ltd. Timmins Ont.) Lot 5 King Street, Plan M-17 (Sudbury)	1940 to 1943	28.56	.71	2.70	31.97
4. Sam Campsall, Porcupine, Ont. (Thos. F. Hughes, Porcupine, Ont.) Lot 167 Queen Street, Plan M-12 (Sudbury)	1939 to 1943	26.93	.67	2.70	30.30
5. Wm. Corner, Porcupine, Ontario, Lot 548 Earl Street, Plan M-12 (Sudbury)	1940 to 1943	2.07	.05	2.70	4.82
6. L. Cohen Estate, Timmins, Ont. (Mabel Kitchen, Washington, D.C.) Lot 43, Haileybury Crescent, Plan M-17 (Sudbury)	1940 to 1943	18.00	.45	2.70	21.15
7. L. Cohen Estate, Timmins, Ont. (Mabel Kitchen, Washington, D.C.) Lot 44, Haileybury Crescent, Plan M-17 (Sudbury)	1940 to 1943	18.00	.45	2.70	21.15
8. Edward Edmark, Porcupine, Ont. (Mrs. M. Gervais, Porcupine, Ont.) Lot 214 Seventh St., Plan M-27 (Sudbury)	1940 to 1943	3.56	.09	2.70	6.35
9. J. Higginsbotham, 77 Elm St. South, Timmins, Ont. Lot 40, King Street, Plan M-12 (Sudbury)	1940 to 1943	14.28	.36	2.70	17.34
10. J. Higginsbotham, 77 Elm St. South, Timmins, Ont. Lot 41 King Street, Plan M-12 (Sudbury)	1940 to 1943	14.28	.36	2.70	17.34
11. J. Higginsbotham, 77 Elm St. South, Timmins, Ont. Lot 52 King Street, Plan M-12 (Sudbury)	1940 to 1943	14.28	.36	2.70	17.34
12. J. Higginsbotham, 77 Elm St. South, Timmins, Ont. Lot 113 Queen Street, Plan M-12 (Sudbury)	1940 to 1943	14.28	.36	2.70	17.34
13. J. Higginsbotham, 77 Elm St. South, Timmins, Ont. Lot 114 Queen Street, Plan M12 (Sudbury)	1940 to 1943	14.28	.36	2.70	17.34
14. J. Higginsbotham, 77 Elm St. South, Timmins, Ont. Lot 117 Queen Street, Plan M-12 (Sudbury)	1940 to 1943	14.28	.36	2.70	17.34
15. Frank Kavanaugh, South Porcupine, Ontario Lot 28 Smith Street, Plan M-18 (Sudbury)	1940 to 1943	14.28	.36	2.70	17.34
16. J. Rehall, Porcupine, Ont. (W. F. MacGregor, Windsor, Ont.) Lot 407 Bannerman Ave., Plan M-8 (Sudbury)	1940 to 1943	3.98	.10	2.70	6.78
17. Steve Ostovitch, Porcupine, Ontario Lot 277 Seventh Street, Plan M-27 (Sudbury)	1940 to 1943	72.44	1.81	2.70	76.95
18. Sam Sturch, Porcupine, Ont. (Geo. D. Hamilton, South Porcupine, Ont. Lot 25 Government Road, Plan M-54 (Cochrane)	1940 to 1943	48.69	1.22	2.70	52.61
19. Max Ryan, 217 Spruce Street South, Timmins, Ont. Lot 232 Florence Street, Plan M-16 (Sudbury)	1940 to 1943	1.42	.04	2.70	4.16
20. Max Ryan, 217 Spruce Street South, Timmins, Ont. Lot 233 Florence Street, Plan M-16 (Sudbury)	1940 to 1943	1.42	.04	2.70	4.16
21. Max Ryan, 217 Spruce Street South, Timmins, Ont. Lot 234 Florence Street, Plan M-16 (Sudbury)	1940 to 1943	1.42	.04	2.70	4.16
22. Percy Smith, Porcupine, Ontario Lot 154 Queen Street, Plan M-12 (Sudbury)	1940 to 1943	14.28	.36	2.70	17.34
23. Samuel Sturch, Porcupine, Ontario S. 44 ft. of Lot 228 Princess Street, Plan M-12 (Sudbury)	1940 to 1943	3.55	.09	2.70	6.34
24. Samuel Sturch, Porcupine, Ontario South 44 ft. of Lot 229 Princess Street, Plan M-12 (Sudbury)	1940 to 1943	3.55	.09	2.70	6.35
25. Samuel Sturch, Porcupine, Ontario South 44 ft. of Lot 230 Princess Street, Plan M-12 (Sudbury)	1940 to 1943	3.55	.09	2.70	6.34
26. Wm. Shub, 119 Pine Street South, Timmins, Ontario Lot 194 Seventh Street, Plan M-27 (Sudbury)	1940 to 1943	2.16	.05	2.70	4.91
27. Mabel Kitchen, Washington, D.C. Lot 73 Martin Street, Plan M-17 (Sudbury)	1940 to 1943	69.89	1.75	2.70	74.34
28. Mabel Kitchen, Washington, D.C. Lot 109 George Street, Plan M-17 (Sudbury)	1940 to 1943	10.73	.27	2.70	13.70
29. Mabel Kitchen, Washington, D.C. Lot 111, George Street, Plan M-17 (Sudbury)	1940 to 1943	10.70	.27	2.70	13.67
30. J. Hill, Porcupine, Ontario Part of Lot 218 Henry Street, Plan M-8 (Sudbury)	1940 to 1943	5.70	.14	2.70	8.54
31. Wm. C. Ofter, Orillia, Ontario Lot 219 Henry Street, Plan M-8 (Sudbury)	1940 to 1943	7.16	.18	2.70	10.04
32. Dennis Mahoney, South Porcupine, Ont. (Robt. Jackson, New Liskeard, Ont.) Lot 54 MacDougall St. Plan M-18 (Sudbury)	1937 to 1943	253.70	6.34	2.70	262.74
33. Mike Mahoney, South Porcupine, Ontario Lot 55 MacDougall St., Plan M-18 (Sudbury)	1937 to 1943	56.20	1.41	2.70	60.31
34. Mrs. Alice Howe, Porcupine, Ontario Lot 1, Haileybury Avenue, Plan M-21 (Sudbury)	1940 to 1943	107.12	2.68	2.70	112.50
35. Mrs. Alice Howe, Porcupine, Ontario Lot 245 Alfred Street, Plan M-17 (Sudbury)	1940 to 1943	1.43	.04	2.70	4.17
36. Mrs. Alice Howe, Porcupine, Ontario Lot 246 Alfred Street, Plan M-17 (Sudbury)	1940 to 1943	3.54	.09	2.70	6.33
37. Mrs. Alice Howe, Porcupine, Ontario Lot 247 Alfred Street, Plan M-17 (Sudbury)	1940 to 1943	3.58	.09	2.70	6.37
38. Mrs. Alice Howe, Porcupine, Ontario Lot 248 Alfred Street, Plan M-17 (Sudbury)	1940 to 1943	3.55	.09	2.70	6.34
39. Mrs. Alice Howe, Porcupine, Ontario Lot 249 Alfred Street, Plan M-17 (Sudbury)	1940 to 1943	3.58	.09	2.70	6.37
40. Emil Jodoin, Porcupine, Ontario Lot 207 Princess Street, Plan M-12 (Sudbury)	1939 to 1943	15.25	.38	2.70	18.33
41. Gilbert Whyte, South Porcupine, Ontario Lot 63 MacDougall Street, Plan M-18 (Sudbury)	1940 to 1943	30.63	.77	2.70	34.10
42. Phillip J. Brady Estate, Montreal, Que. Broulan Porcupine Mines Ltd., Pamour, Ont. Surface Right of N.E. pt. S. pt. Lot 7, Con. 3 N.E. 1/4 - N. 1/2 Lot 9, Con. 3	1940 to 1943	101.14	2.53	2.70	106.37
43. N.E. 1/4 - N. 1/2 Lot 5, Con. 3 Mabel Wilson, Kirkland Lake, Ontario Surface Rights of North Part of Lot 4, Con. 1 Timmins, Ont. Surface Right of N.E. pt. of N. pt. Lot 10, Con. 6 Mohawk Porcupine Gold Mines Ltd., Room 306-330 Bay Street Toronto, Ont., N.W. 1/4 - S. 1/2 Lot 9, Con. 6	1940 to 1943	102.67	2.57	2.70	107.94
44. Mohawk Porcupine Gold Mines Ltd., Room 306-330 Bay Street, Toronto, Ont. S.E. 1/4 - S. 1/2 Lot 9, Con. 6	1940 to 1943	102.67	2.57	2.70	107.94
45. Mohawk Porcupine Gold Mines Ltd., Room 306-330 Bay Street, Toronto, Ont. S.W. 1/4 - S. 1/2 Lot 9, Con. 6	1940 to 1943	102.67	2.57	2.70	107.94
46. Mohawk Porcupine Gold Mines Ltd., Room 306-330 Bay Street, Toronto, Ont. N.E. 1/4 - N. 1/2 Lot 9, Con. 5	1940 to 1943	102.67	2.57	2.70	107.94
47. Mohawk Porcupine Gold Mines Ltd., Room 306-330 Bay Street, Toronto, Ont. N.W. 1/4 - N. 1/2 Lot 9, Con. 5	1940 to 1943	102.67	2.57	2.70	107.94
48. Mohawk Porcupine Gold Mines Ltd., Room 306-330 Bay Street, Toronto, Ont. S.W. 1/4 - S. 1/2 Lot 9, Con. 6	1940 to 1943	102.67	2.57	2.70	107.94
49. Chappie-Mammoth Gold Mines Ltd., Room 826-67 Yonge Street, Toronto, Ont. S.W. 1/4 - N. 1/2 Lot 10, Con. 2	1940 to 1943	410.61	10.27	2.70	423.58
50. Chappie-Mammoth Gold Mines Ltd., Room 826-67 Yonge Street, Toronto, Ont. N.W. 1/4 - S. 1/2 Lot 10, Con. 2	1940 to 1943	128.32	3.21	2.70	134.23
51. Chappie-Mammoth Gold Mines Ltd., Room 826-67 Yonge Street, Toronto, Ont. S.W. 1/4 - S. 1/2 Lot 10, Con. 2	1940 to 1943	128.32	3.21	2.70	134.23
52. Chappie-Mammoth Gold Mines Ltd., Room 826-67 Yonge Street, Toronto, Ont. N.E. 1/4 - N. 1/2 Lot 10, Con. 1	1940 to 1943	115.49	2.89	2.70	121.08
53. Chappie-Mammoth Gold Mines Ltd., Room 826-67 Yonge Street, Toronto, Ont. N.W. 1/4 - N. 1/2 Lot 10, Con. 1	1940 to 1943	115.49	2.89	2.70	121.08
54. Chappie-Mammoth Gold Mines Ltd., Room 826-67 Yonge Street, Toronto, Ont. N.E. pt. - S. pt. Lot 11, Con. 2	1940 to 1943	115.49	2.89	2.70	121.08
55. Chappie-Mammoth Gold Mines Ltd., Room 826-67 Yonge Street, Toronto, Ont. N.W. pt. - S. pt. Lot 11, Con. 2	1940 to 1943	115.49	2.89	2.70	121.08
56. Chappie-Mammoth Gold Mines Ltd., Room 826-67 Yonge Street, Toronto, Ont. S.E. pt. - S. pt. Lot 11, Con. 2	1940 to 1943	115.49	2.89	2.70	121.08
57. Chappie-Mammoth Gold Mines Ltd., Room 826-67 Yonge Street, Toronto, Ont. S.W. pt. - S. pt. Lot 11, Con. 2	1940 to 1943	115.49	2.89	2.70	121.08
58. Chappie-Mammoth Gold Mines Ltd., Room 826-67 Yonge Street, Toronto, Ont. S.E. pt. - S. pt. Lot 12, Con. 2	1940 to 1943	106.33	2.66	2.70	111.69
59. Chappie-Mammoth Gold Mines Ltd., Room 826-67 Yonge Street, Toronto, Ont. N.E. 1/4 - N. 1/2 Lot 12, Con. 1	1940 to 1943	125.72	3.14	2.70	131.56

W. F. STRUTT, Treasurer, Township of Whitney.