

AT THE LOCAL THEATRES

Distinguished Cast in Durbin-Laughton Feature Production

Supporting Cast of Well-Known Comedians.

Deanna Durbin is surrounded by perhaps her most outstanding supporting cast, with accent on comedy, in "It Started With Eve". Universal feature at the Broadway theatre, Dec. 25th, 26th and 27th.

Both Miss Durbin and her distinguished co-star, Charles Laughton, devote themselves primarily to comedy. So does Robert Cummings, the popular leading man and comedian who appears opposite Miss Durbin for the third time.

Practically every principal in the nearest thing to a "straight" role is Margaret Tallichet, as the "other woman." The veteran comedians Guy Kibbee and Walter Catlett, are importantly cast, while Catharine Doucet, well-known character actress and comedienne, is also featured.

Among other comedy players are Dorothea Kent, blonde comedienne, Leonard Elliott, young Broadway comedian, Irving Bacon and Gus Schilling, teamed as a pair of morbid death-mask makers.

Also seen is Leon Belasco, former orchestra leader and a comedy star of the recent Hollywood-Broadway revue, "Meet the People."

Among ex-stars glimpsed in scenes from the new film are Jack Mulhall, Herbert Rawlinson, Eddie Polo, ex-serial hero, and George Lewis, former "Collegians" star.

Directed by Henry Koster, the new romantic comedy traces the adventures of a hatcheck girl who is erroneously introduced into the home of a New York multi-millionaire as his son's fiancée. Joe Pasternak was the producer.

PROOF PRODUCED

"Do you really love me, Alfred?" asked the girl.

"Ethel, I refer you to my last letter," replied the young man. "Devotedly" is on the first page, "madly" on page three, "passionately" on pages four and five, and "till death do us part" in the postscript. I cannot be more explicit, Ethel!"—Exchange.



Deanna Durbin co-stars with Charles Laughton in her tenth picture, Universal's "It Started With Eve." Robert Cummins has the leading romantic role and the unusual comedy-drama was directed by Henry Koster. Joe Pasternak was the producer and the large supporting cast includes Margaret Tallichet, Guy Kibbee, Walter Catlett, Catharine Doucet and Charles Coleman at the Broadway, Dec. 25th, 26th and 27th.

Charlie McCarthy, Fibber McGee and Molly Among Stars

Notable Cast in "Look Who's Laughing."

Edgar Bergen credits a large part of the success of Charlie McCarthy, with whom, together with Fibber McGee and Molly and Lucille Ball, he is co-starring in RKO Radio's "Look Who's Laughing," to the fact that he, Bergen, studied to be a doctor when he was in college. "Look Who's Laughing" will be at the Palace theatre Thursday, Thursday midnight, Friday and Saturday, Dec. 25th, 26th and 27th.

Says Mr. Bergen: "A substantial part of the business of learning to be a doctor or surgeon is the study of anatomy, and the knowledge I gained in that study has, I believe, been of inestimable value to me in the manipulating of my little wooden friend."

"Most people are inclined to think the whole problem of a ventriloquist lies in the vocal work. This, of course, is as untrue as if a painter put a beautiful face on a twisted and grotesque body. The physical and the vocal must be worked together in perfect harmony and integration, re-creating thus artificially a new character. But this new character being created must never, physically or vocally, violate the credibilities. If he does, even for an instant, the seemingness of a real person will vanish at once into thin air."

Realizing this early in his career, Bergen made an arduous study of making Charlie a real person physically.

"Charlie is completely free in all his joints—and if I wanted to I could put him through some strange and miraculous contortions. But that, of course, is the one thing I studiously avoid. Physically, Charlie never does anything a normal boy of 12 or 13 wouldn't be likely to do. You'll never see his arms twisted into peculiar and unnatural positions, his legs or head or body doing things that the human body can't normally do. That's where anatomy came in: I know just how a body is constructed, and what it can do."

"And that is why," concludes Bergen, "I believe Charlie has come to be regarded by his audiences as a real person, so real that in 'Look Who's Laughing,' he is shown enacting scenes entirely by himself, without me being shown at all. And these scenes are entirely realistic, completely credible to the audience who, visually at least and for the moment, take Charlie to be as real and as much a person as I am myself."

Dorothy Lovett, lovely leading lady well known for her portrayal of Nurse Judy in the Dr. Christian film series, currently enacts the second feminine lead in RKO Radio's hilarious comedy, "Look Who's Laughing," starring Edgar Bergen, Charlie McCarthy, Fibber McGee and Molly, and Lucille Ball.

New Western Film Unrolls Laughs, Action, Romance

Superior Action Distinguishes Presentation of "Texas Rangers Ride Again."

Bullet-speed action, lusty laughs and high-riding romance will be enrolled at the Cartier theatre, Wednesday and Thursday, Dec. 24th and 25th, when "Texas Rangers Ride Again" will be on the double feature programme, to the accompaniment of galloping hooves and barking six-shooters.

Distinguished by superior acting on the part of its impressive cast, supplied with exceptionally good story material and dialogue, this rousing yarn of the exploits of the G-Men of the range may be placed in the same lofty class with the best Western "epics" made.

Featured in the notable cast are John Howard and Ellen Drew, in the romantic roles, Akim Tamiroff, May Robson, Broderick Crawford, Charley Grapewin, John Miljan, William Duncan, Anthony Quinn and Harvey Stephens. Each is provided with roles in which they can do full justice to their talents.

Set in the vast spaces of Texas, the story concerns itself with the mysterious disappearance of cattle from the White Sage Ranch, owned by May Robson. Unable to stop the cattle-rustling, she asks the aid of the Texas Rangers, who send two of their crack men, John Howard and Broderick Crawford. Howard has to pose as the Peccos Kid, a desperado, in order to join the rustler's gang and bore from within.

Howard's rudeness and fresh manners are apparently what lovely Ellen Drew likes, in her role of May Robson's granddaughter, but she pretends to distaste until the final scene. The banter that passes between them contains some really fresh, witty lines.

Rangers Howard and Crawford solve the cattle-vanishing mystery, employing such modern anti-crime devices as patrol cars and shortwave radio, in addition to the regular equipment of fleet horses and swift gunplay. Just how the cattle were seemingly made to evaporate into thin air is one of the points of the picture we don't think it would be fair to give away. But it can be told that May Robson's grandson, John Miljan, is the brains of the cattle-rustling gang, lead by Anthony Quinn.

Akim Tamiroff contributes another fine characterization, with comedy overtones, as the Mexican ranch hand who risks his life trying to save Rangers Howard and Charley Grapewin, Ellen Drew and May Robson, when the ranch is under the withering fire of the cattle-kidnappers in the smash climax of the film.

Authors William R. Lipman and Horace McCoy are to be congratulated for turning out this original and thrilling story, and Director James Hogan to be commended for his skillful direction.

The other special on the double feature programme will be "Tillie the Toller," with Kay Harris and Wm. Tracy.

65,000,000 FANS WELCOME THEM!



Here's a sight radio fans well might think they never would see. Left to right, Molly, Fibber McGee, Charlie McCarthy and Edgar Bergen, starred in RKO Radio's new feature, "Look Who's Laughing," which also stars lovely and witty Lucille Ball. For Fibber McGee and Molly, it's their screen debut. Almost all their Wistful Vista characters appear with them, while Bergen introduces a new personality, Ophelia, a little doll. At the Palace theatre, Thursday, Thursday Midnight, Friday and Saturday, December 25th, 26th and 27th.

Says Men Returning to Work at Kirkland Mines

A front page article in The Northern News last week says:—

The ranks of the striking miners continue to diminish. It is true the rate is slow but from day to day the ranks grow smaller as the men go back to the mines or go to other centres in search of employment.

There are now 1,320 men at work in the eight local mines involved in the strike. Since the strike started 240 men have lifted their unemployment insurance cards from the mines where they formerly worked and have gone to other centres. That represents 1,569 men who very definitely are not in the union ranks. In other words 40 per cent of the former effective working force of 3,947 men have gone back to work, here or elsewhere.

In addition, arising out of reduced mining operations, numbers of other

men will not be required at the mine, still further reducing the effectiveness of the union's cause.

Meanwhile, in Ottawa, The National Kirkland Lake Strike Committee is in session. What will come from it remains to be seen.

Dr. R. H. Arthur, Pioneer Doctor of Sudbury

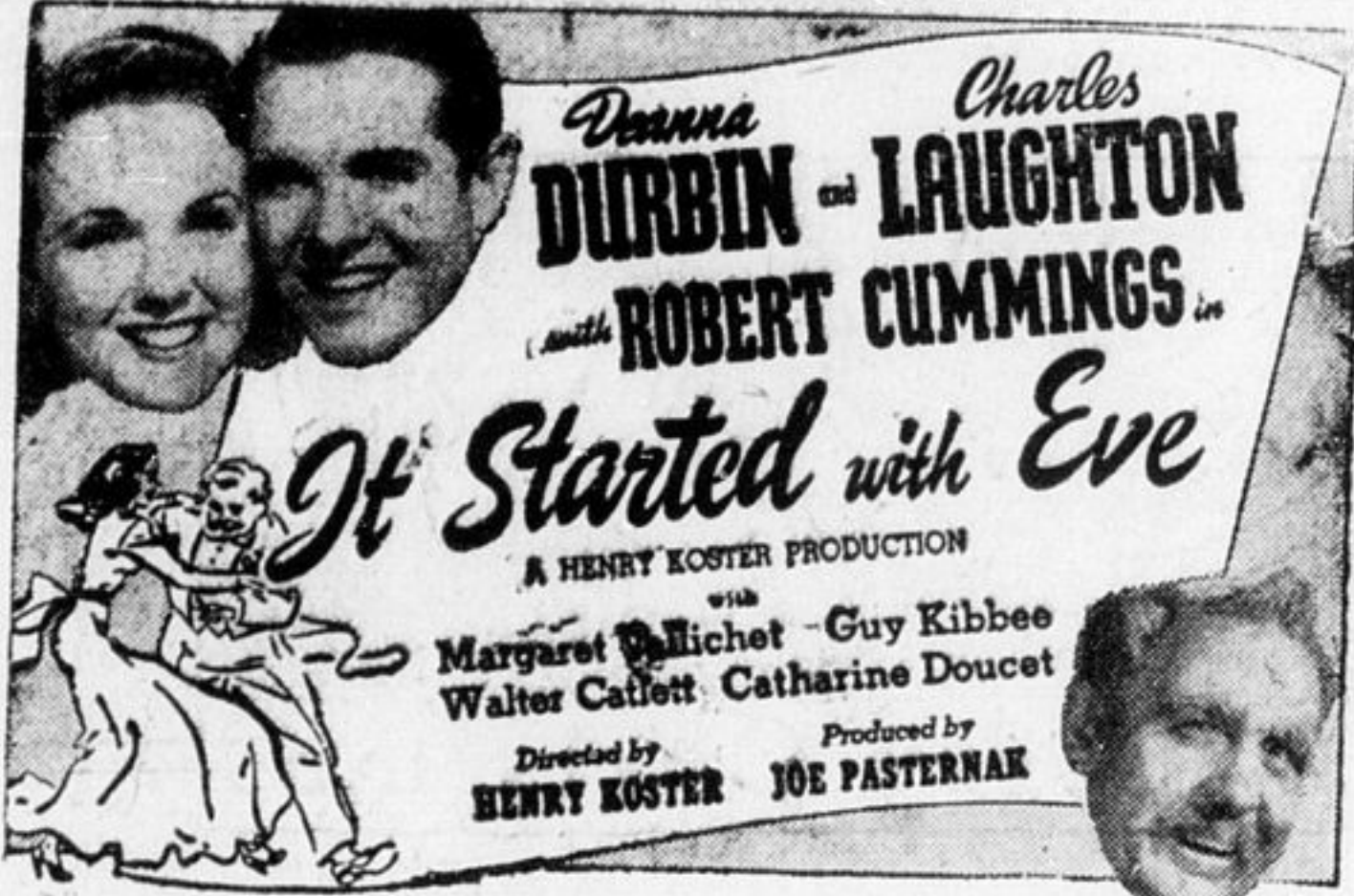
Dr. R. H. Arthur, one of the pioneers in Sudbury in the medical profession, and a former mayor of the city, died suddenly at his home in Toronto on Friday evening. With the exception of the years he served in military hospitals during the war of 1914 to 1918, he resided continuously in Sudbury from 1892 to 1939. He took a helpful interest in municipal and other public affairs and was a valuable citizen of Sudbury. His efforts for the Algonquin Regt. were of special value. He was in his 81st year at the time of death.

WEDNESDAY NITE, THIS WEEK

is FOTO-NITE

125⁰⁰ OFFERED FOR SOMEONE'S PHOTO

STARTING THURSDAY



Thursday Show Continuous from 2.45 p.m.

After SUNDAY MID. and MONDAY to WEDNES.

"TARGET FOR TONIGHT"

and

"BLUES IN THE NIGHT"

With Priscilla Lane — Betty Field



from the Staff and Management of the

BROADWAY

YOUR FAMOUS PLAYERS THEATRE

Cartier Theatre

Telephone 2400

"Community Prices" Every Day of Week

MATINEE	30c	ADULTS	EVENINGS	30c
CHILDREN	12c	CHILDREN		18c

Your Christmas Attractions

Wednesday and Thursday, December 24th and 25th

TWO BIG HITS

"TEXAS RANGERS RIDE AGAIN"

Starring—JOHN HOWARD and AKIM TAMIROFF

2nd Hit—"TILLIE THE TOLLER"

Starring—KAY HARRIS and WM. TRACY

SERIAL—"Green Hornet Strikes Again"—No. 13

Friday and Saturday, December 26th and 27th

"DIVE BOMBER"

Starring—ERROL FLYNN, FRED MACMURRAY, ALEXIS SMALL

2nd Hit—"THIEVES FALL OUT"

Starring—EDDIE ALBERT and JOAN LESLIE

Short Colour Cartoon—"Officer Duck"

Monday and Tuesday, December 29th & 30th

"HERE COMES MR. JORDON"

Starring—ROBT. MONTGOMERY and CLAUDE RAINS

2nd Hit—"Under Age"

Starring—NAN GREY and TOM NEAL

ADDED SHORT—Unusual Occupations No. 3—Colour

Wednesday and Thursday, Dec. 31st and Jan. 1st

"MEET JOHN DOE"

Starring—GARRY COOPER and BARBARA STANWYCK

2nd Hit—"GIRL FROM AVENUE A"

Starring—JANE WITHERS and KENT TAYLOR

SERIAL—"THE GREEN HORNET"—No. 14

Goldfields

TELEPHONE 531

New Low Evening Admission Prices
For Adults—40c (tax included)

Tuesday and Wednesday, December 23rd and 24th

DOUBLE FEATURE PROGRAMME SHOWING TWO

FIRST RUN PICTURES

LLOYD NOLAN and ALEXIS SMITH in

"STEEL AGAINST THE SKY"

SECOND HIT

RAMM in

"THE BAKER'S WIFE"

SHORT—"Exploring Space"

Thursday and Friday, December 25th and 26th

DOUBLE FEATURE PROGRAMME SHOWING TWO

FIRST RUN PICTURES

ROBERT PRESTON, ELLEN DREW, NILS ASTER in

"THE NIGHT OF JANUARY 16TH"

SECOND HIT

JINNY LYDON, JUNE FREISSER in

"HENRY ALDRICH FOR PRESIDENT"

SHORTS—"Frozen North"—a Cartoon

Coming Saturday—Tim Holt in "BANDIT TRAIL"

The Staff and Management
Take This Opportunity
TO WISH ONE AND ALL

A Merry Christmas

AND

Prosperous New Year

Palace

TELEPHONE 560

For Your Holiday Entertainment

Continuous Shows Christmas Day Only

To-Night and Wednesday, December 23rd & 24th

JEFFREY LYNN and CONSTANCE BENNETT in

"LAW OF THE TROPICS"

SHORTS

War Clouds in the Pacific News of the World Coloured Cartoon

Christmas Day, Christmas Midnight, Friday and

Saturday, December 25th, 26th 27th

EDGAR BERGAN, CHARLIE MCCARTHY, FIBBER MCGEE and

MOLLY in

"LOOK WHO'S LAUGHING"

SHORTS

Coloured Cartoon Latest War News

A "MARCH OF TIME" Titled "THUMBS UP TEXAS"

Continuous Shows on Christmas Day Only

Doors Open at 2.00 p.m. Shows Starts at 2.30 p.m.

December 26th—Friday Night's Revival Feature

along with regular feature in

"FOREIGN CORRESPONDENT"

Here's Good News

COMMUNITY

DISTINCTIVE SILVERPLATE

may be purchased on our convenient

"Payment Plan" ★

Make your selection NOW while stocks are still complete!



★FEATURE VALUE

44 PIECE SERVICE

FOR EIGHT PEOPLE \$49.75

SAVE \$10.00

Open Stock Price \$59.75

Simply Pay

One Third

Down

THE BALANCE CAN

BE SPREAD OVER

A CONVENIENT

PERIOD

- Contents
- 8 Teaspoons
 - 8 Dessert Spoons
 - 8 H.H. Knives, De Luxe Stainless Blades
 - 8 Forks
 - 8 5-O'Clock Teaspoons
 - 1 Butter Knife
 - 1 Sugar Spoon
 - 2 Tablespoons

Others sets of Community Distinctive Silverplate in tarnish-proof chests from \$34.75 up.

A Thousand and One GIFTS FOR LAST MINUTE SHOPPERS



Choose From Our Grand Selection
Make someone on your Gift List happier this year
with a gift of Jewelry chosen from Remus'

C. A. REMUS

THIRD at CEDAR

TIMMINS