

Everything In Forest Products



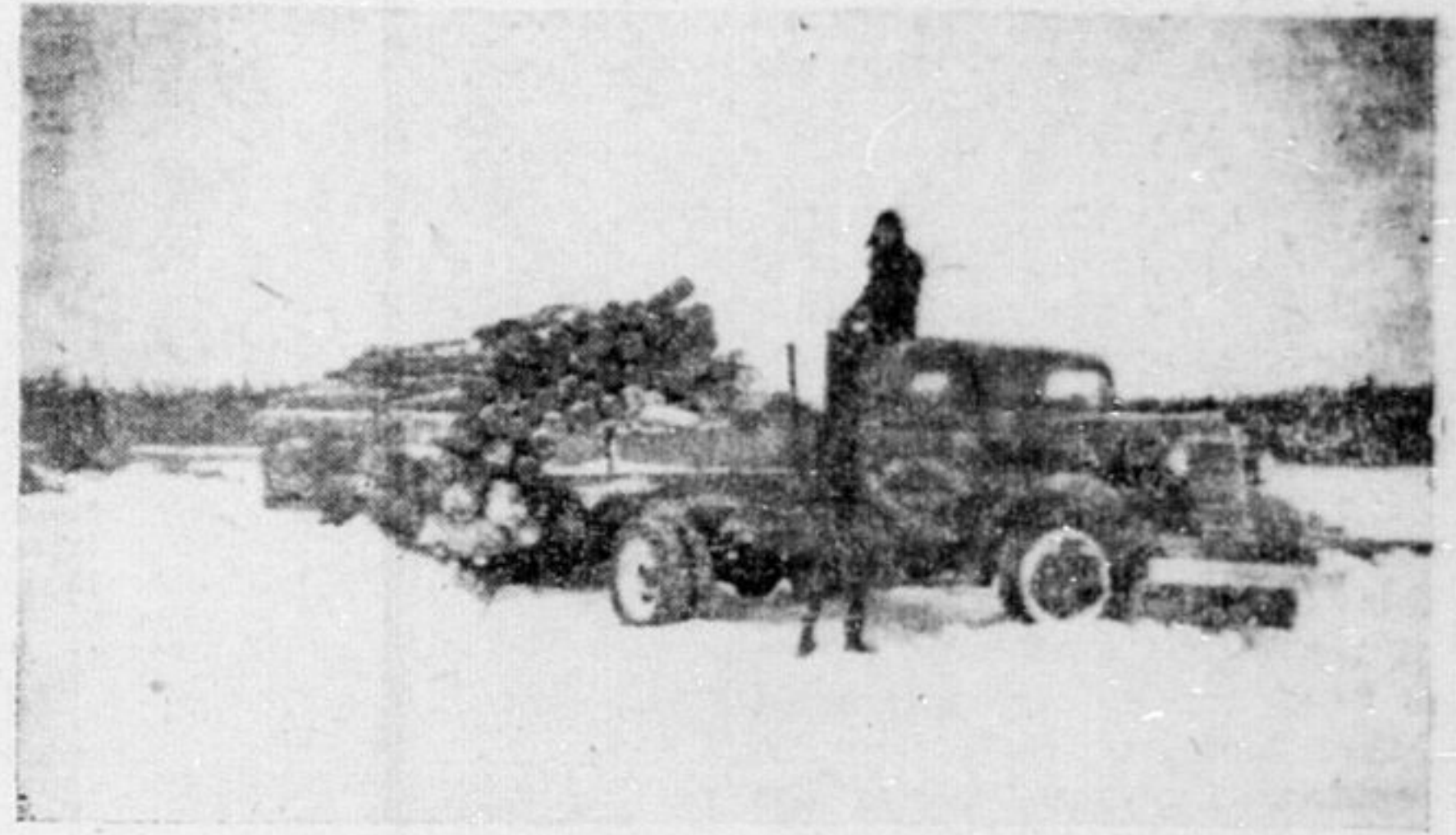
Pictured here is part of the mining timber cut in Adams Township, where the enormous operations of The Rudolph-McChesney Lumber Co. make them able to supply a large percentage of all mining timber used in this district.



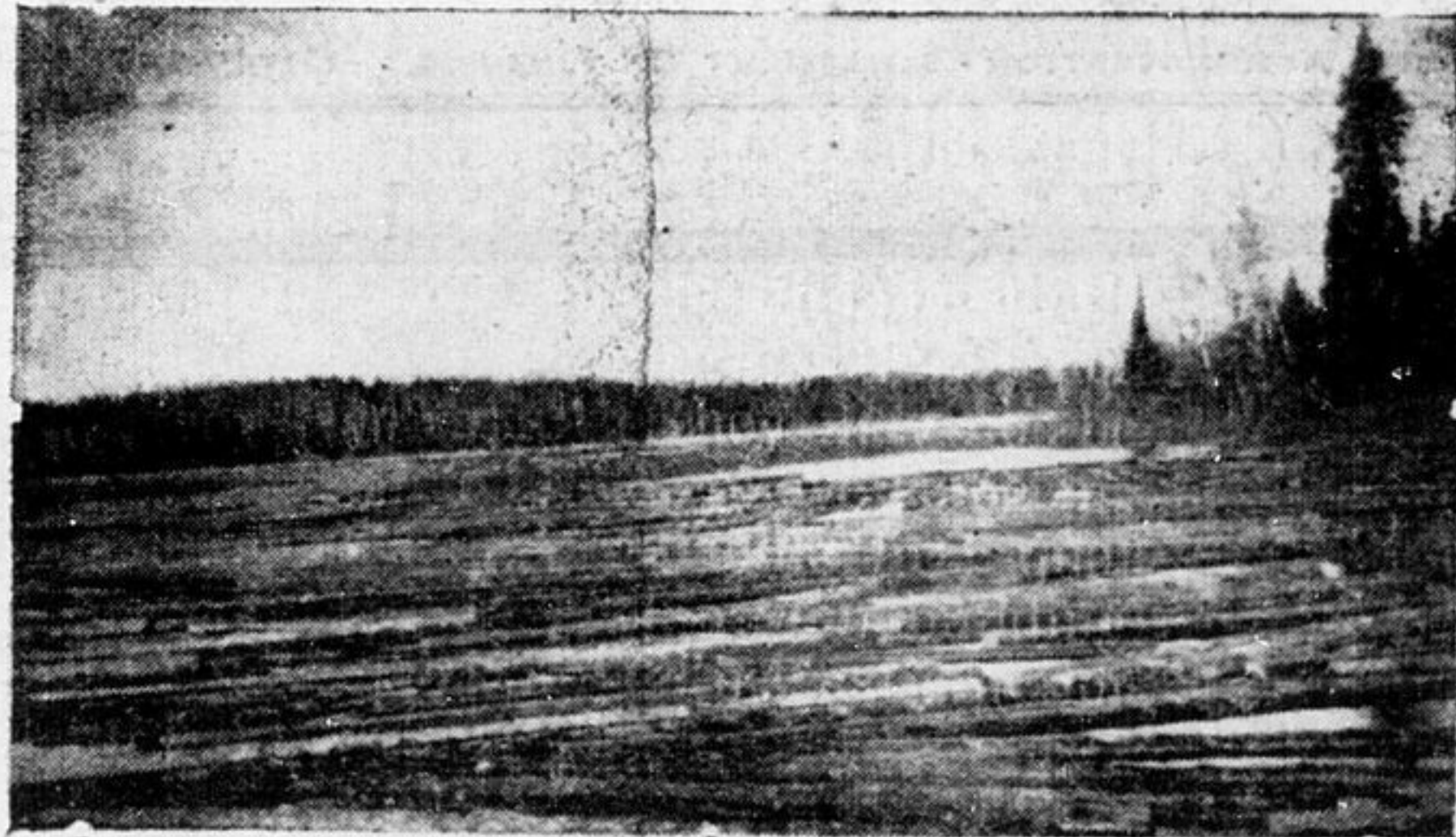
Loading mining timber from skids on to large trucks during the winter months. This scene took place in Eldorado Township another of the large timber limits of this company.



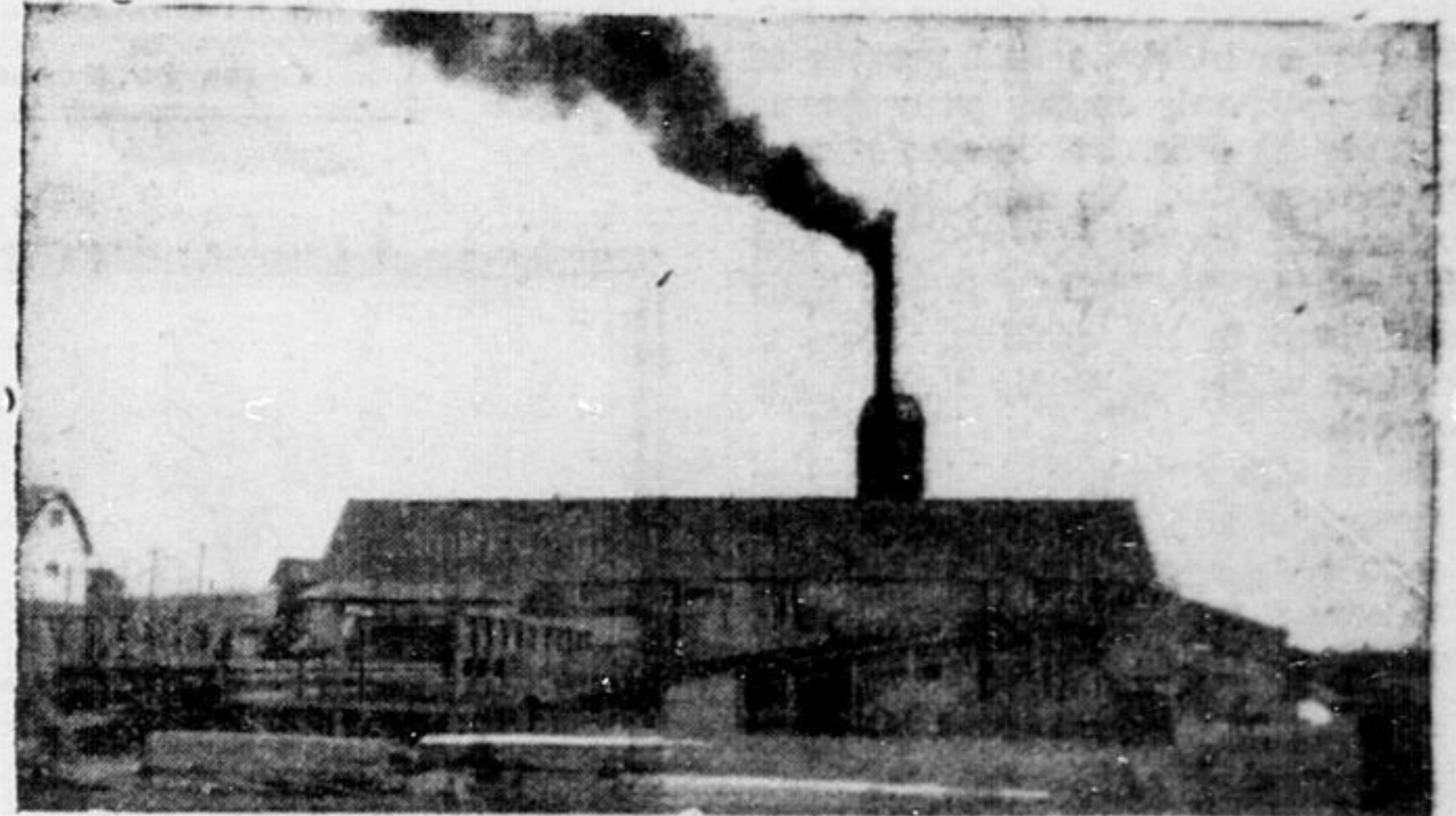
Tractors play a big part in moving mining timber in Adams Township. Here can be seen part of The Rudolph-McChesney Lumber Co. cut last winter.



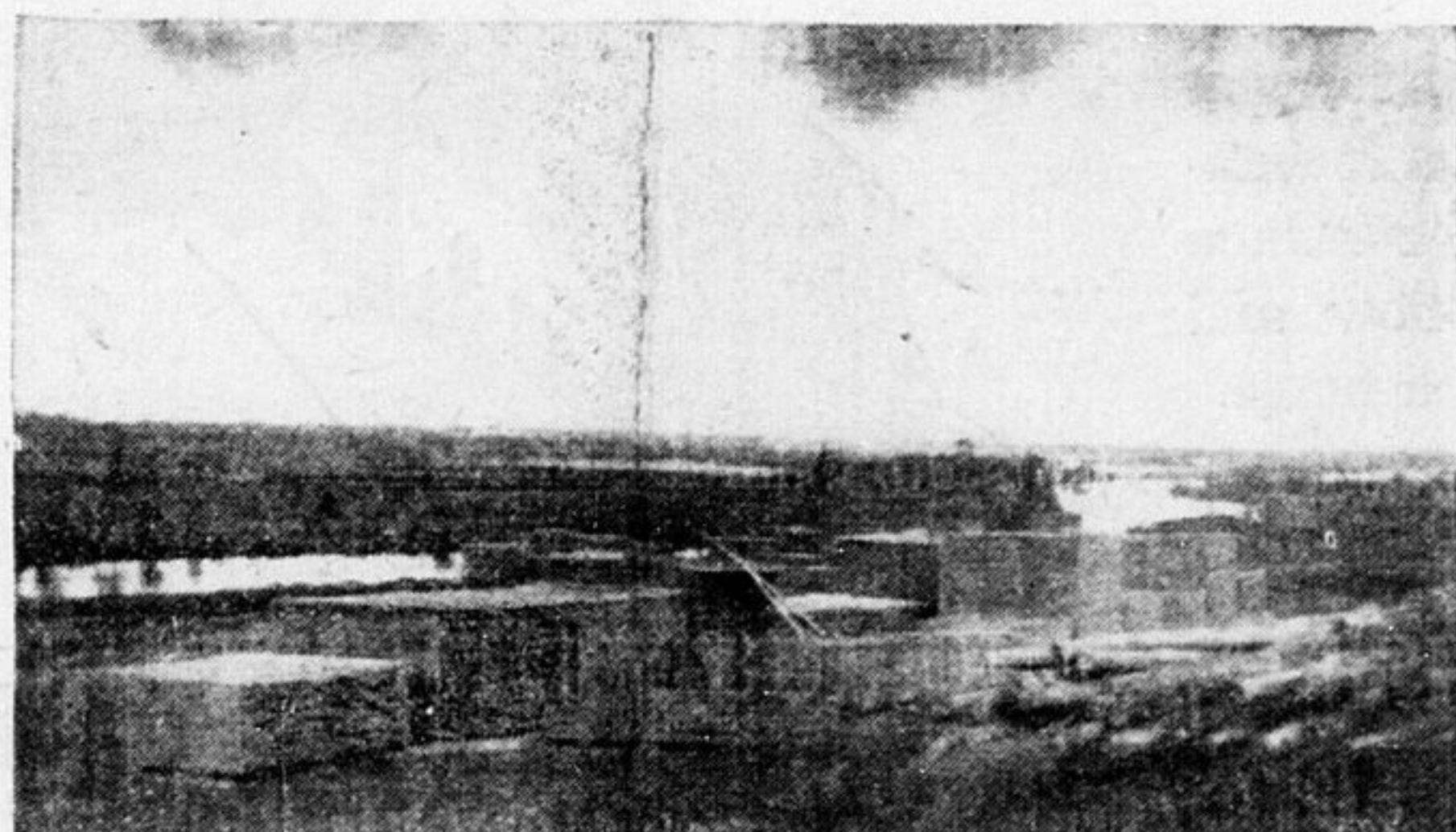
Saw Logs, too, are hauled from McBride Township to the Red Sucker River and later floated to the mill. All logs of 5" in diameter or more are either sawed into lumber lengths or used as mining timber.



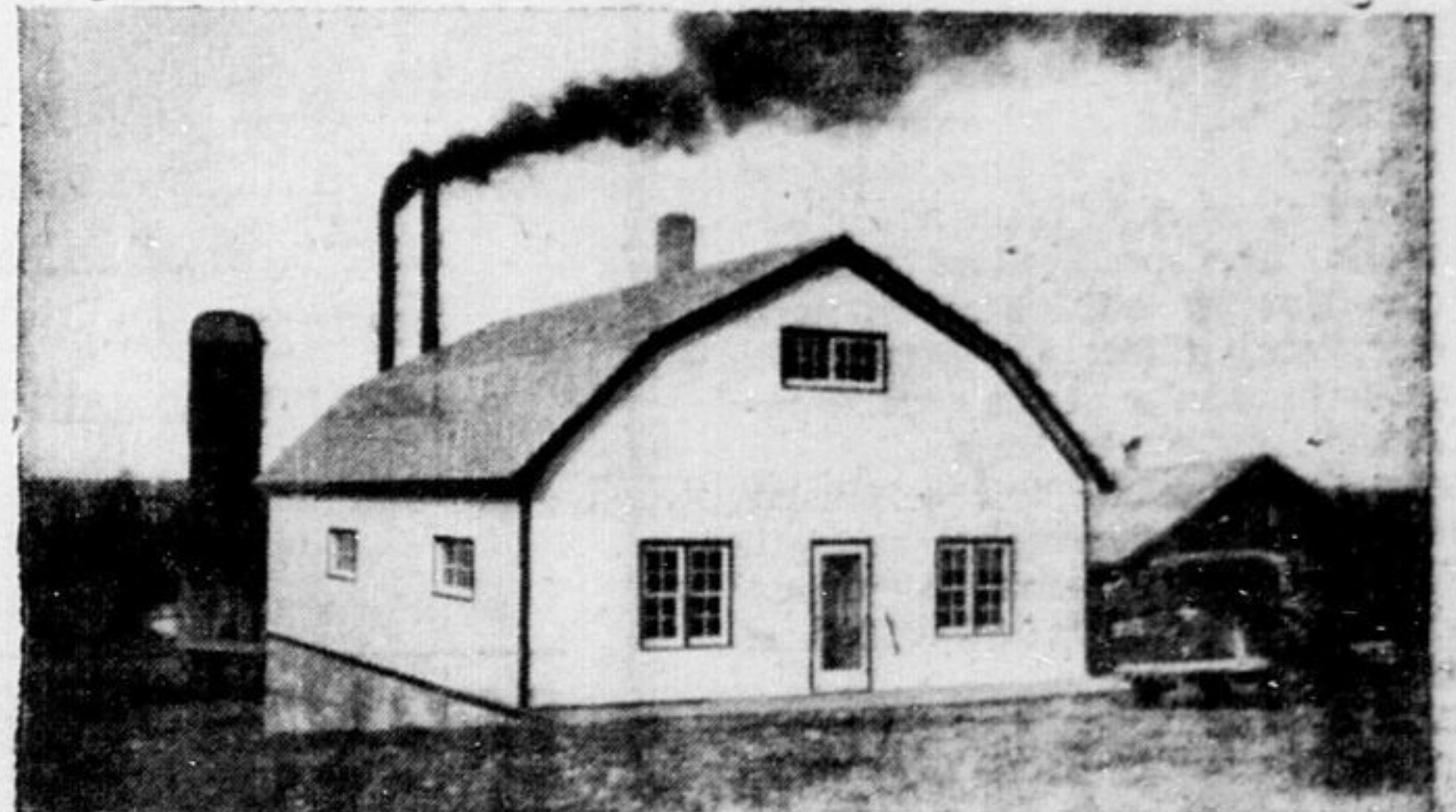
Last year's log drive on the Red Sucker river, where the logs cut the previous season float to the mill.



The Rudolph-McChesney Lumber Company's mill located on the banks of the Mattagami where during the past 25 years it has turned out a large percentage of all forest products used in the district.



The finished product — piles of lumber on The Rudolph-McChesney Lumber Co. property, ready for shipment to the various contractors, dealers and mines in the district.



The office of The Rudolph-McChesney Lumber Co., located at Mattagami Heights from where bush operations are directed, where orders may be placed for the various forest products turned out by the mill, and all general business transacted.

Rudolph-McChesney Lumber Co.

Limited

● LUMBER

● MINE TIMBERS

● CEDAR POLES

Phone 584

[Save - Buy Direct from Manufacturer]

Timmins