

PLEASANT HOMES

by Elizabeth MacRea Boykin

FURNISH YOUR PLACE IN THE SUN

Outdoor Furniture Combines Comfort With Style These Days—Chairs are Resilient and Shaped to Fit the Curves of the Body—Metal, Rattan or Wood are Equally Good.

Maybe you're athletic and like to take your summer leisure with a vengeance; you know, tearing around the countryside on hikes, racing over a tennis court or ploughing after a golf ball.

Or maybe you'd rather just sit. There's a lot to be said in defense of summer sitting. And lots of temptations in the form of porch and garden furniture. Even those who take their summer energetically do have their weak moments when a chair in the shade and a long drink of something cool are welcome as flowers in May.

Attention to the Outdoor Scene

Furniture for outdoor living is no longer in the class of kitchen chairs, when anything went that was left over or down at the heels. Interest in gardens and planting is assuming more and more importance, and the chairs and tables you choose for use on the lawn can be positive assets or definite detractors to your premises. Besides, the question of comfort has entered the picture, no longer will we stand for the hard sitting that used to be the rule with all outdoor chairs and settees. Even the metal and wood furniture nowadays is lithe and springs, fits the curves of the body, and gives at each movement. Try sitting in some of them the next time you're down town shopping.

The first thing to decide about, though, is what type of summer furniture to get: metal, rattan, reed or wood. And whether you want it to stand being left out in the weather or not.

To Leave to the Elements

If you simply want to put your furniture out and forget about it till fall,

DON'T NEGLECT NATURE'S WARNINGS

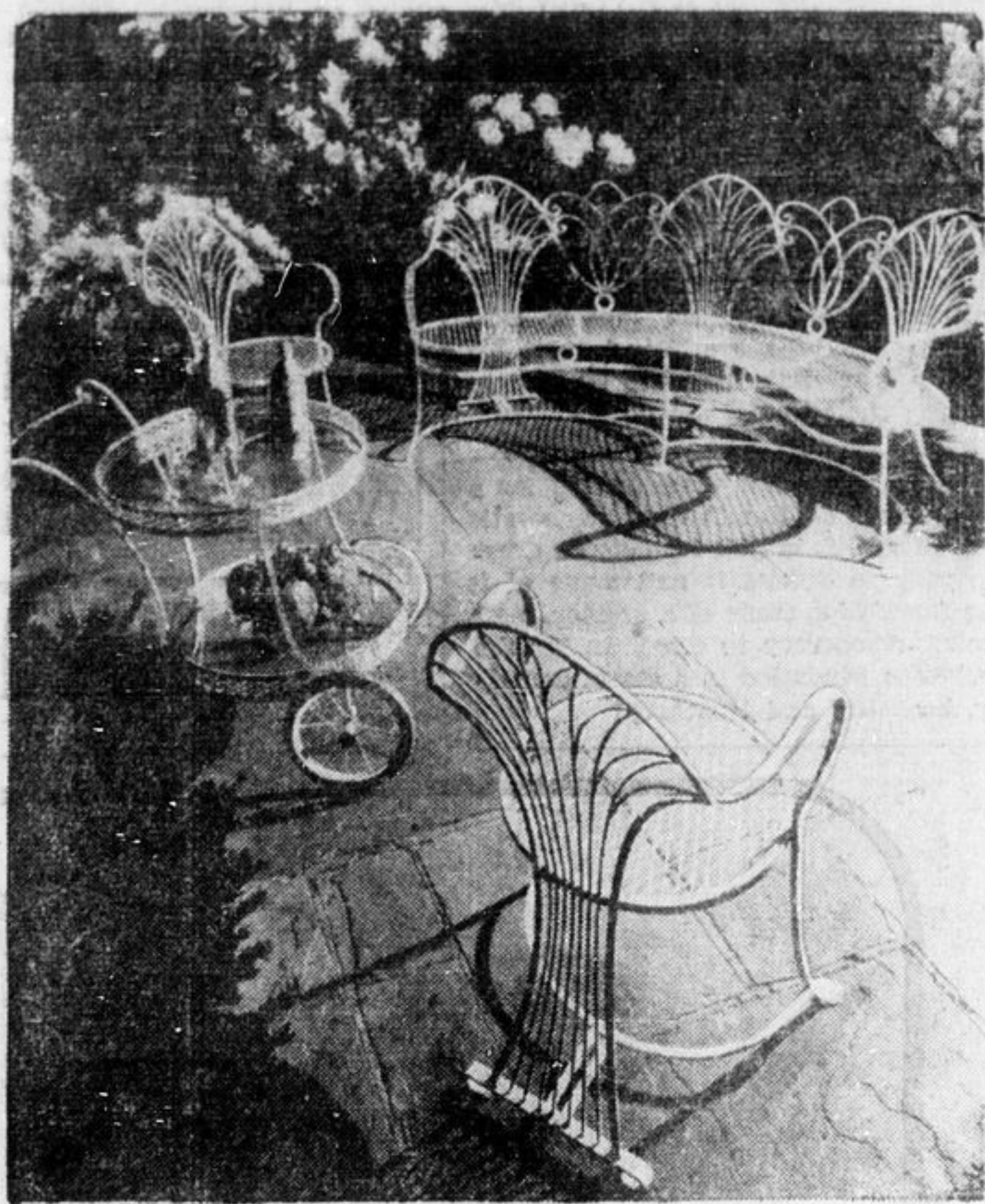
Headaches, Acid Indigestion, Rheumatic Pains

In the rush and bustle and strain these days, are you going to neglect yourself till nature shouts her protest—headaches, sour stomach, pains of rheumatism, lumbago, neuritis?

Don't do it! Don't lose a single day's work or a minute of fun that you can avoid losing. No bloody "Keep fit with Kruschen Salts. Millions of people throughout the Empire take the "little daily dose" of Kruschen every morning of their lives. Kruschen is British. The quality of every one of its many ingredients is the highest obtainable anywhere in the world. Together these mineral salts, in minute crystal (almost powder) form make a mass attack on the common cause of these miserable ailments. They help keep your body clear of clogging waste, poisons, blood impurities.

Whether you are on active service in the kitchen, the office, at a lathe, or in any branch of the "service"—keep fit the easy, inexpensive Kruschen way.

Get a bottle from your druggist. Take just what you can put on a dime—each morning. No bloody aftermath. No violent laxative effect. Just a grand remedy that imparts that million dollar feeling of abounding health and vigour. Bottles 25c, 45c, 75c.



Lacy white metal continues to be a fashion highlight in outdoor furniture. There are several excellent new methods that have been developed for weather proofing this type of furniture so that it can be left outdoors. And it is very, very comfortable as well as easy to lift.

better not go in too much for the cushioned types. Although there are weather proofed and mildew-proof fabrics for these, the seams are likely to give trouble. The store showing pieces of interest to you can give you the information you desire about this, however, as they want to be satisfied. On the whole, the weather proofed metal furniture can probably take the gaff about as well or better than anything else. Especially the new chromium and painted types being offered this season because there is a more highly perfected type of finish available now than previously. Plain wood Adirondack type of outdoor chairs are comfortable and take the weather pretty well. You can have separate cushions for them to bring in at night.

Shelter for Best Service

The reed and rattan furniture that is so livable and restful will take a certain amount of weather, but it holds up much better with reasonable care and shelter, which is true of any outdoor furniture for that matter.

As for the season's styles in furniture, white wire furniture in lacy designs and delicate wrought iron furniture painted white continue to be very pleasant and very popular. It has the charm of organy and garden hats and we can't think of anything prettier for a lawn, porch or garden, providing your house is agreeable and you feel as pertified as that toward life in summer. It is both weather-proof and comfortable, as well as smart to look at... quite a combination.

ation. In addition to the swirls and turns that we've been seeing in the delicate types of white metal furniture, we've seen golf, tennis and riding motifs as well as musical notes for the designs on the back of the chairs.

The Mellowed Tones

A lacy outdoor furniture isn't white, however... in fact there's a decided trend toward mellowed tones in wrought iron furniture as in other aspects of decoration. The newest finishes we've seen include white that's been rubbed over and touched up with gold, not to look gilded but simply to take the glare off the white and give a pleasantly antique effect. A dull old red, something like Pompeii red or brick red is another finish that is being shown here and there. A very lovely cerulean blue, dusty pinks and a dull old green have also been used with distinction in some of the new outdoor furniture. There's a Mediterranean feeling to many of these designs and finishes, but Emil Hauser, who designed them, tells us that he found his best models for wrought iron in New Orleans, although he has traveled extensively abroad, too, in search of fine designs to adapt for needed. There are clever wheelbarrow outdoor furniture. Incidentally, he suggests that these more interesting garden chairs and table ensembles be used indoors during the winter. What could be more interesting than a breakfast end of the kitchen furnished with a really smart table and chairs, or a wide hall might make use of them for bridge on winter evenings.

Streamlining

Rattan furniture has taken on many of those streamlines that used to belong pretty exclusively to tubular metal furniture. It's a nice curve for rattan and has given it a simply interesting style that we prefer to the sterner lines of other years. The sectional sofas are easy to move about and to arrange as chairs with handles to move smoothly, as well as single and double chaise longue with wheels for easy moving and long sweeping lines just right for jolling.

The newest most exciting news in wooden furniture for the out of doors

Enlistments in the First Contingent by Provinces

Ottawa.—All provinces of the Dominion are represented in the 1st Division, overseas, of the Canadian Active Service Force, according to figures made known by Hon. Norman Rogers, Minister of National Defence. The province of Ontario leads with a total, all ranks, of 11,038.

The following are the totals, all ranks, by provinces of the 1st Division overseas: Prince Edward Island, 171; Nova Scotia, 1,274; New Brunswick, 1,531; Quebec, 4,158; Ontario, 11,038; Manitoba, 1,250; Saskatchewan, 1,250; Alberta, 2,042; British Columbia, 1,651; headquarters and miscellaneous, 578.

During the year 1914—Canada sent 30,855 men, all ranks, overseas. To date in the present conflict 26,279 men of the C.A.S.F. have gone overseas and a second division will leave shortly, approximately doubling the above total.

Enlistments of all forces by military districts to date are as follows: Military District No. 1, 6,751; Military District No. 2, 47,500; M.D. No. 3, 13,335; M.D. No. 4, 8,345; M.D. No. 5, 4,910; M.D. No. 6, 10,721; M.D. No. 7, 4,477; M.D. No. 10, 7,099; M.D. No. 11, 6,843; M.D. No. 12, 4,713; M.D. No. 13, 6,041; National Defence Headquarters, 1,235.

The total enlisted to date in the C.A.S.F. is 92,030.

features the California influence. Not those highly decorated California designs that we saw so much of several years ago, but a simpler more rustic type with a covered wagon feeling that makes it thoroughly congenial for outdoor use. Solid wooden wagon wheels on chairs, settees and tables to make them more easily portable... lots of rope is seen also.

Colors Under the Sun

Cushions can be very vivid or very sober, and all to match or brightly contrasting, according to taste. White and green with a grape-red is an effective combination seen around in a good deal recently. So is sea blue and white, or dusty pink and white. Beige with verti green is interesting as is beige with Pompeii red.

Horizontal ombre type stripes are a high fashion in cushions for summer furniture, and it seems to us that there are fewer florals in furniture paddings than in many a long year. But per-versely enough, there are a good many flowered umbrellas rising from the centre of terrace tables. Some of these umbrellas, incidentally, have air pockets where the spokes converge which break the force of the sun and do a mild job of air conditioning.

Tables Are Tricky

Speaking of tables reminds us that there are more cute tricks here than in many moons, which is saying a good deal. All kinds of little canopied bars on wheels, tea wagons and end tables, coffee tables and wheelbarrow refreshment units... all a part of the conspiracy that's on for making life out of doors more of a lark. There are lots of table and tea combinations, too, often having the table between two seats, the whole constructed as a single piece of furniture.

Furniture in Its Place

A word about siting summer furniture to its setting. Don't go into lacy white wire when your house is a sprawling informal sort of place, the chances are that rattan or wood furniture will look better there. On the whole, the white metal furniture needs to be backed up properly. It's lovely with a red brick house, also with many white houses or with pink, blue or grey Mediterranean houses. Generally speaking, the toned metal we described takes a fairly formal setting. Modern chromium metal is more versatile and will fit into a lot of places. The California furniture is definitely provincial, so think about it if your home base is early American, French provincial, Monterey or English cottage style.

The main thing to remember is that you need summer furniture whether you'd thought of it or not. Whether you've an ancestral lawn with peacocks strutting about or just a pocket handkerchief patch of grass or nothing but a scrap of porch, you should claim your place in the sun and furnish it to use and enjoy.

(Copyright 1940, by Elizabeth MacRea Boykin)

Couple of Young Ladies Plan to Make Flight to Alaska

Lock Haven Girls Now Outfitting for Daring Flight.

Lock Haven, Pa., June 5.—An eight thousand mile aerial tour in a 50 horsepower light airplane will start from Lock Haven, Pa., during the month of June with Nome, Alaska, the most distant point in its itinerary. This adventurous flight will be made, not by robust, hard-bitten, professional pilots, but by two 110 pound girls who wish to be numbered among the pilots who have flown beneath the light of the "midnight sun."

Miss Alma Hefflin, Lightplane Editor of Air Trails Magazine, well known pilot and free lance writer, and Miss Margie McQuinn, employed by the Piper Aircraft Corporation, Lock Haven, Pa., are the two girls who plan this extended aerial jaunt.

The girls have been perfecting plans and making careful preparations for the flight for nearly a year. They have secured maps and detailed information from pilots who have flown over the route, including the late Larry Larson, the only man who has flown the Inside Passage to Alaska in a lightplane.

Much interest attaches to the trip because the girls will fly principally over the route of the proposed International Highway to Alaska. When, and if, this highway is completed many pilots hope that a system of landing fields will be installed to permit private fliers to journey to Alaska on business and pleasure trips.

Governor Ernest Gruening, of Alaska, has already sent the girls a message of welcome and invited them to visit him during their trip. Invitations to visit many points have reached the girls and many requests for photographs and material for news and magazine articles, have been received.

To Publish Book

Miss Hefflin has agreed to write a book about the flight for the Atlantic Monthly Press and has tentatively accepted several requests for magazine articles. In addition to her work for Air Trails, she is known for articles in Mademoiselle, Popular Aviation, Aero Digest, Aviation, Sportsman Pilot and many other publications.

Last summer Alma established an unofficial world's altitude record for airplanes below 170 cubic inches piston displacement. She ascended to 21,050 feet over northern New Jersey on that flight. Her "Cub" sportplane, which the girls will fly to Alaska, was paid for with the proceeds of free lance writing activity. She has already flown it over 25 states. Ordinarily, Alma reports, she flies some 20,000 miles a year in her work. In contrast to Alma Hefflin, who has been flying eight years, Margie McQuinn dates her aviation activity at only one year. At her home in Milwaukee, Wis., however, Margie studied to be a trained nurse before becoming interested in aviation and if masculine "wisecracks" mean anything, this experience may be a valuable supplement to flying ability in the wilds of Alaska.

"Substitute For Adventure." The plane the girls will fly is a 50 horsepower Piper "Cub" manufactured by the Piper Aircraft Corporation, of Lock Haven, Pa. This model lightplane is in use by over 50,000 pilots and student pilots in the U.S. today. It has a range of about 350 miles under good conditions. It flies, cruising at about 80 miles an hour in contrast to the 200 m.p.h., and thousand mile cruising range most pilots like to have on a flight over this territory.

Nevertheless, the girls consider the trip merely a "Substitute For Adventure" and this is to be the title of Miss Hefflin's book. They would prefer to encircle South America or explore Darkest Africa, but as this is beyond their facilities they have chosen to take a month to six weeks vacation and visit Alaska.

The girls are quite blasé about the trackless mountains which are inadequately mapped for contact flying. Their compass will be useless in the far north as they approach the magnetic north pole. They will need to fly above 12,000 feet in some places to clear the mountains. Landing fields are few and far between. But the girls plan to

INSURANCE

AND REAL ESTATE IN ALL BRANCHES

HOUSES AND LOTS FOR SALE
CONVENIENT TERMS

SIMMS, HOOKER & DREW

13a Pine Street North
Timmins

Phone—Office 112
Residence 135

use a Learadio similar to airmen equipment and fly by radio "fixes," water-sheds and the sun, between outstanding landmarks. In the opinion of experts who have surveyed their plans they should succeed in navigating the difficult course but no one says it will be easy.

Sleeping Bags and Grizzly Bears
Because Alma and Margie weigh only 110 pounds each they will be able to carry a greater weight of fuel and equipment in their little "Cub" than two men averaging 170 pounds for which the plane is designed.

Their equipment will include sleeping bags, a 30-30 rifle and a revolver, mosquito netting, medical equipment, fish hooks, water and food for six days each and other items. They have been carefully studying all possibilities and the use of this emergency equipment. They were told to get slices of beefsteak and practice sewing them together to become able to use a surgical needle in an emergency. This was comparatively easy compared to other things, such as learning to shoot.

Police Chief Martin J. Peters of Lock Haven, has given the girls instructions in the use of rifle and revolver. They wondered if they would be able to stop a grizzly bear with the 30-30 but after watching their target practice, friends suggested two ways to handle any stray grizzlies or polar bears. The first piece of excellent advice was to treat all bears as non-combatants, i.e., with plenty of respect and no display of firearms; the second was to carry a few hand grenades for such emergencies.

Margie and Alma, however, expect to have adequate answers for such perils when they return from Alaska. And this first flight from Pennsylvania to the Arctic Circle by two girls in a lightplane should prove an interesting demonstration of this type of plane as well as a good story of the girls' experiences.

Germany Specializing in Spreading Lying Rumors

One of the most dangerous weapons in the German strategy attack, writes Britannicus, the well known British war and political commentator, is rumor. Developments in recent weeks moreover have greatly enhanced the effectiveness of this weapon in German hands. The swarms of refugees which the Germans drive before them in their advance, interspersed with German agents, provide an excellent medium for carrying alarmist rumours. More important still is the occupation by Germany of great sources of European news such as Amsterdam and Copenhagen; the virtual cutting off of others, such as Stockholm; and the control of wireless stations and of the trans-continental cable and telephone services which Germany's aggressions have brought her. This has not only resulted in the drying up of sources of reliable neutral and in particular of American news, but it has enabled Germany to apply with renewed vigour her well-known technique of spreading lies and rumours under neutral guise. Thus the Oslo radio quotes Belgrade when recounting fantastic tales that revolution is breaking out in France; Budapest quotes Copenhagen for a fairy story that French are suing for

a separate peace; Rome quotes Stockholm as authority for a fable that British troops are abandoning France and so forth. All these allegedly neutral reports in fact emanate from German sources and are without exception false.

Now It's a Machine to Test the Degree of Intoxication

The question of when a motorist is drunk in the meaning of the law would be removed from the realm of controversial judgment to one of scientific certainty by a device, called for convenience a drunkometer, which was demonstrated last week before a safety conference at Lansing. The machine tests the content of alcohol in the suspect's breath, and this, they say, bears a constant relation to the amount of alcohol in the blood. Anything up to five-hundredths of one per cent. would not justify a drunk-driving charge; but over that proportion, the charge should be laid, if other symptoms of intoxication are present. In later models, perhaps, a dial registering every degree of alcoholic effect, from mild elation to a coma, will be indicated for ready reference, going away with the need for computation.—The Detroit News.

PROTECTION for them



and SAVINGS for you!

Plan now to provide protection for your family, which is so essential—and at the same time create a savings fund for yourself. Consult the nearest Mutual Life of Canada representative. Remember, 165,000 policyholders own The Mutual Life of Canada... all its profits go to the policyholders!

THE MUTUAL LIFE OF CANADA

Established 1869

Head Office Waterloo, Ont.

"Owned by the Policyholders"

Branch Office
6 Cedar St. at North, Timmins, Ont.
FRED STOCK, BRANCH MANAGER

Re-Roof Your Home

FOR AS LITTLE AS \$10³⁵ A MONTH WITH

B. P. ASPHALT SHINGLES

RU-BER-OID • BIRD • VULCANITE

\$10.35 a Month for 12 Months
Roofs a House Requiring 12 Squares of 210 lb. B. P. ASPHALT SHINGLES Under a Home Improvement Plan Loan.

Ask Your B. P. Dealer to Obtain an Estimate on Re-Roofing Your Home With Colourful Firesafe All-Weather B. P. Asphalt Shingles.

SEND FOR THIS FREE BOOKLET "Roof Security" "Crowned with Colour"

PRODUCED IN CANADA

BUILDING PRODUCTS LIMITED

MONTREAL WINNIPEG TORONTO SAINT JOHN HAMILTON HALIFAX

Rattan remains a thoroughly enjoyable, pleasant type of furniture to have on the lawn or porch. The single and double chaise longue are particularly fine for porch use.

Enjoy the Pleasure of Your Own Home

Give your family all the benefits that come with owning your own home and at the same time you'll be money ahead. Under the National Housing Act you can have a home built to order and pay monthly just like rent. Instead of handing money over to the landlord it goes into your own house... almost as good as money in the bank.

Call and have Fogg's show you how much you can save over a few years by building now while costs are still low. They will give you every help in planning, financing and in selecting a reliable contractor.

John W. Fogg

LUMBER MATERIALS COAL AND CORK MINE SUPPLIES LIMITED

Head Office and Yard
TIMMINS PHONE 117
Schumacher Yard Phone 725
Kirland Lake Branch Phone 393