

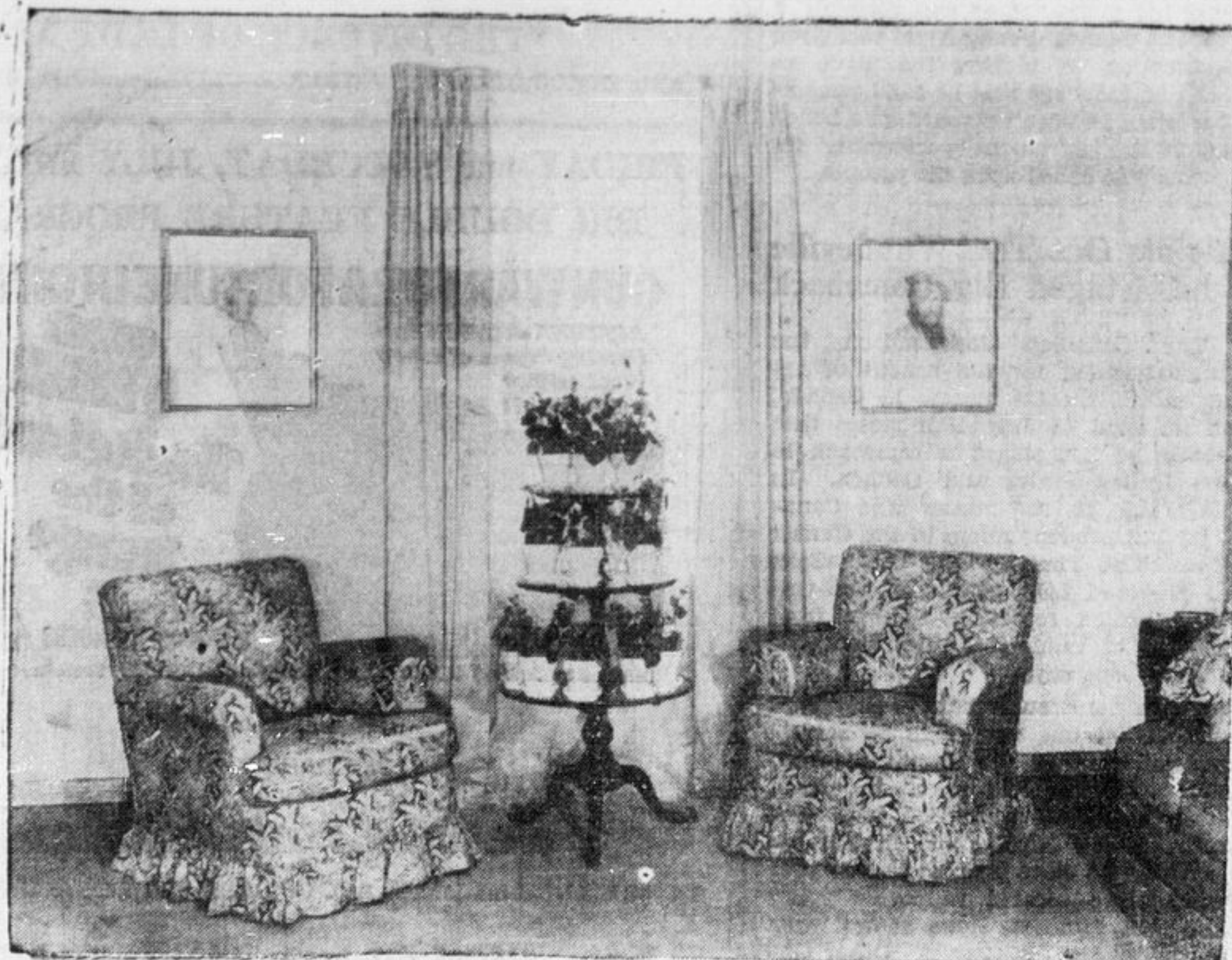


PLEASANT HOMES

by Elizabeth MacRea Boykin

THE FLOWERPLACE IN ROOM ARRANGEMENT

Over-Scale Floral Designs Have Architectural Importance in Decoration — Miniature Arrangements — Asymmetric Balance



Flower furniture is in high popularity with decorators just at present, and the tier type dumb waiter table is a particular favorite. Here it is used for a massed arrangement of potted plants.

There's an important new trend in room arrangement that's worth taking seriously. It's the use of a flowerplace as a center of interest around which to group furniture. This may be a secondary focal point in the room where there's a fireplace, or else it may be the main focus if you don't have a mantel. Or you can arrange your mantel as a flowerplace in the summer.

In the living room of a model house at the New York World's Fair, the flower place is arranged on a mantel-high ledge with a dramatic panel of plate glass mirror behind it and vines falling in long graceful tendrils almost to the floor. A pleasant place indeed for a conversation grouping of furniture.

In a traditional 18th century English room done in monotone colorings ranging from dusty peach to cocoa brown, a flowerplace is arranged in a window with chintz chairs grouped around it. In this case a three-tier mahogany dumb waiter table is used to hold white pots filled with white geraniums. Often in newer buildings they're building plant-troughs into the sills of the windows, especially when there is a bay arrangement or a glass-block corner.

MYRIAD REFLECTIONS
A mirror screen lends itself dramatically to a flowerplace arrangement. In front of it, have enormous glass containers of different height levels for impressive, tall flowers to create the effect of a bower or conservatory since the mirrored panels of the screen will repeat the reflections of the flowers in myriad versions. Again a flowerplace may be simply a matter of a big wall mirror panel set to reflect a pleasant view through wide windows.

If you are going to utilize your fireplace for flowers during the summer, you can set a provocative container in the fireplace opening with a mirrored panel screen cut to fit the space, then add a trough along the mantel shelf to hold the central arrangement, letting sprays droop down in front of the mirror screen.

There is also a trend toward building in plant or flower troughs in the tops of furniture. Pickled pine pieces such as secretaries and breakfront cabinets are sometimes given added interest by putting a copper plant-trough on top for green leaves—a pleasant color contrast to the pale wood of the furniture itself. It's an interesting way to bring color and design rather high in a room.

Tables and stands for plants are becoming increasingly common in the stores. You will find many small end tables for lamps and books that also include a recessed place to hold a pot of greenery or an informal arrangement of flowers. We've even seen a dressing table, long and narrow in shape, with recessed places in either end to hold greenery. Incidentally, such recessed places could be built into tables

pale blue, white, black or sometimes a deep scintillating red or green. Preferably they should have some indirect illumination and you must by all means consider the flower container that you select for a niche as carefully as you do for the actual furniture in the room. In color, material and scale this vase should be exactly right for the niche. Then give the flower arrangement for the niche as much thought as you would the setting of your table for a special party. In the winter when flowers are rare and expensive, concentrate on huckleberry leaves, laurel leaves or other dramatic greenery that is always available at reasonable cost at the florist's.

We have to thank the World's Fair for stimulating the use of big over-scale flower arrangements as a part of

plate, or piece of brass. Oft times such a plan will be far more effective than placing the vase square in the center or balancing it at the other end with another exactly like it. Balance is a subtle thing you know—and it may be achieved quite as artistically by an asymmetric design as by absolute symmetry.

Of first importance, if you hope to achieve real distinction with your flower arrangements, is to have just the right containers for each important place, along with holders to set inside the vases and such utilitarian accessories as little rocks and chicken wire to help you make your flowers stand up and sing. Sometimes, by a bit of experiment you can get spectacular effect—begin with a broad low bowl or tray, add a taller flaring container, then inside of it set a tall slender vase. Think what a spectacular skyscraper design you could make with flowers like that!

The cutting garden is going to have to take life a lot more seriously than ever before. And it's high time we all patronized the florists more during off seasons when our own gardens let us down. Because flowers for the house are becoming just as important as curtains or rugs in interior design. Decorators have been on to this trick for years—in fact in an emergency they can all but change a room entirely by clever arrangement of fresh flowers or plants. This doesn't mean a massive funeral parlor effect. In fact a few flowers subtly used will give a much better effect than great armloads piled in hither and yon without any eye for the general design of the room.

New Geologist Reports On the Abitibi District

The Quebec bureau of Mines has recently published four advance geographical reports. These are photo-lith 8 1-2 x 11, and of varying lengths. A brief description of the reports in numerical order follows.

P. R. 127, with map is an 11-page combined report by W. W. Longley and P. E. Auger describing the Eastern and Western sections of the Mattagami Lake Map Area, Abitibi territory, also giving certain assays.

P. R. 128, is a four-page report by Carl Tolman, describing the west half of Vaquequin township, Abitibi county, dealing particularly with the claims of certain mining companies.

P. R. 129, is a three-page report by H. M. Bannerman describing the central part of Dester township, Abitibi county, on ranges III, IV, V and VI.

P. R. 131, is a three-page report by G. S. MacKenzie describing the Hallwell mine map-area, Beauchastel township, Abitibi county.

These reports are now available and will be sent on a request addressed to the Director, Bureau of Mines, Quebec City.

Porcupine Output \$21,108,487 for First Half 1939

Porcupine group Well in Lead of Other Ontario Camps in Gold Production.

The following is the June gold bulletin from the Ontario Dept. of Mines—Ontario producing gold mines by fields for the month of June follow:

PORCUPINE (15)—Buffalo - Ankerite, Conlaum, Delinte, DeSantis, Dome, Hallnor, Hollinger, Hollinger (Ross), Mace, McIntyre, Moneta, Naybob, Pamour, Paymaster, Preston East Dome.

KIRKLAND LAKE (10)—Bidgood, Golden Gate, Kirkland Lake Gold, Lake Shore, Macassa, Sylvanite, Teck-Hughes, Toburn, Upper Canada, Wright-Hargreaves.

LARDER LAKE (3)—Kerr-Addison, Ome-a, Raven River.

MATACHEWAN (2)—Matatchewan Consolidated, Young-Davidson.

SUREBURY & TIMAGAMI (3)—Label Oro, New Golden Rock, Ronda.

ALGOMA DISTRICT (3)—Cline Lake, Minto, Agawa (formerly L. B. United).

THUNDER BAY DISTRICT (10)—Bankfield, Hard Rock, Leitch, Little Long Lac, MacLeod-Cockshutt, Northern Empire, Sand River, Sturgeon River, St. Anthony, Tomball.

PATRICIA PORTION (10)—Central Patricia, Gold Eagle, Hasage, Howey, J. M. Consolidated, Madsen Red Lake, McKenzie Red Lake, Pickle Crow, Sachigo, Uchi.

KENORA AND RAINY RIVER DISTRICTS (2)—Straw Lake Beach, Wendigo.

Bullion to the value of \$8,856,044 was produced by 58 gold mines in Ontario during the 30 days of June as compared with \$8,986,543 for the 31 days of May and \$8,203,982 for the corresponding month of 1938. Production at Uchi, DeSantis and Agawa was inaugurated. Cochenour Willans and Tionaga ceased operating.

A five per cent production increase is noted for the second quarter over the first three months of 1939, and the first six months registered an increase of nearly five millions of dollars over the production for the same period of last year.

MONTHLY OUTPUT OF ONTARIO GOLD MINES 1938-1939

	1938	1939
Value \$		Value \$
First Quarter	10,393,055	11,046,555
April	3,535,146	3,697,016
May	3,583,219	3,871,651
June	3,597,067	4,008,865
Total	21,108,487	22,623,887

KIRKLAND LAKE - LARDER LAKE BELT

First Quarter	8,525,454	9,021,220
April	2,941,015	3,097,221
May	3,133,104	3,293,606


PORCUPINE BELT

First Quarter	10,393,055	11,046,555
April	3,535,146	3,697,016
May	3,583,219	3,871,651
June	3,597,067	4,008,865
Total	21,108,487	22,623,887

KIRKLAND LAKE - LARDER LAKE BELT

First Quarter	8,525,454	9,021,220
April	2,941,015	3,097,221
May	3,133,104	3,293,606

June	3,101,726	3,103,409
Total	17,701,299	18,506,456
MATACHEWAN - SUDBURY-TIMAGAMI		
First Quarter	617,691	821,949
April	210,716	270,255
May	225,194	254,294
June	237,904	219,392
Total	1,291,505	1,565,880
NORTHWESTERN ONTARIO (includes Algoma, Thunder Bay, Patricia and Kenora and Rainy River Districts)		
First Quarter	3,326,118	4,551,417
April	1,051,292	1,569,005
May	1,311,057	1,566,993
June	1,267,285	1,524,578
Total	6,966,752	9,212,107
TOTAL FOR ONTARIO		
First Quarter	22,862,318	25,432,195
April	7,748,169	8,633,557
May	8,252,574	8,986,534
June	8,203,982	8,856,044
Grand Total	47,067,043	51,908,330

Your Own Home 

\$25. a month

will build you a modern 5-room house with full basement, on your own lot, under the National Housing Act, including architectural fees.

Enquiries Invited
OPEN EVENINGS 7-10

Laurence Pacey
Architectural Draughtsman
Phone 1395 or 975
70½ FIFTH AVENUE

RAIN or SHINE
Beauty that Endures

WEATHERTEX
Asphalt Shingles
BIRD • RU-BER-OID • VULCANITE

TEXTURED THICK BUTT SHINGLES
At No Extra Cost!

- NEW GRAINED TEXTURE... gives greater roof character.
- ENDURING BEAUTY... choice of permanent colours or colour blends.
- RUGGED DURABILITY... double thick for extra protection.
- FIRE RESISTANCE... safety from flying sparks and other fire hazards.
- IF YOU PLAN TO BUILD OR RE-ROOF add these extra values to your home.

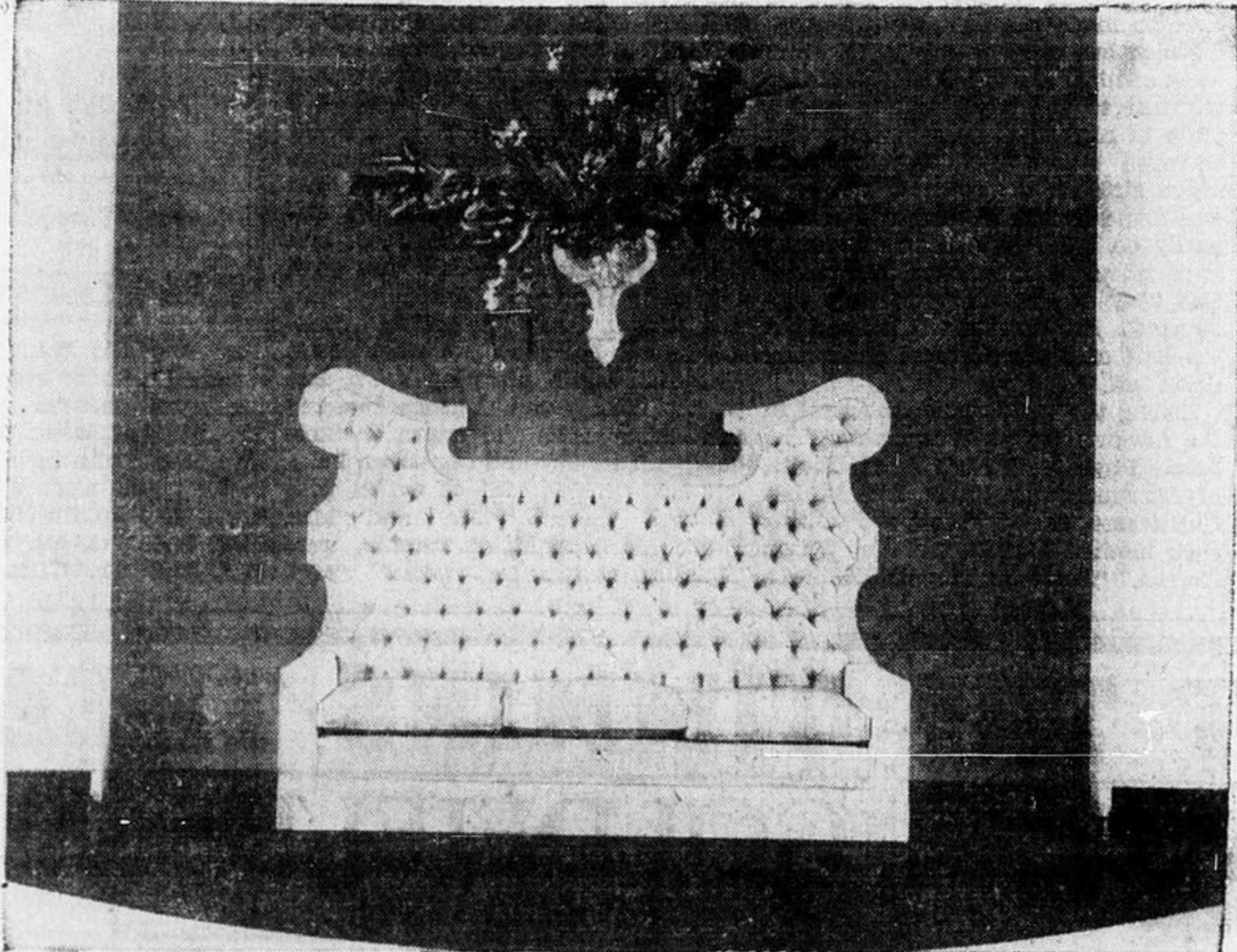
See your local B.P. dealer or write for full details and Free Booklet on Government Loans.



BUILDING PRODUCTS LIMITED
MONTREAL WINNIPEG TORONTO SAINT JOHN HAMILTON HALIFAX

INSULATED SIDINGS — INSUL-BOARD (Vapour Seal) — TILE FLOORINGS

STOCKED BY OUR LOCAL DEALERS



In one of the important foyers in a club at the New York World's Fair is this grouping, showing the use of a plaster wall bracket for flowers as a part of the decorative design on the room.

chests or dressing tables that you might already have — so that fresh things can bring their own charm and personality into your decorative scheme.

Structural Niches

Niches built into the corners of rooms or at the landing of a stairway are becoming an increasingly important structural part of modern homes. They may be incorporated into a newly built house or they may be added to an old one. Or a series of niches along the wall going upstairs will break the space with distinction. Usually these niches are painted a contrasting color inside.

the decorative plan if not the actual architectural design of certain important interiors. Tall columnar pedestals holding great urns of tall flowers and boughs of greenery in several instances carry the main decorative responsibilities for entire walls. Again enormous wall containers of plaster depend on the addition of flowers to complete a furniture ensemble. In a bay window alcove, a pair of tall glass containers made to hold great branches of flowering shrubs or blossoms contribute not only a massed design but likewise the color contrast needed, since both draperies, walls and furniture coverings here are in a dull pale grey tone.

Miniature Arrangements
But all flower arrangements to have importance needn't be expensive. There are some charming small holders appropriate for dainty flowers and modest places. A fastidious lady would always want a small nosegay on her dressing table, and a tea table is doubly attractive with a willow bud vase with one or two perfect blossoms in it. Little bowls and miniature vases for petite blooms are often placed on shelves between bibelots or books. Somewhat larger middle-sized flowers are often attractive on the shelves of your corner cabinet.

When arranging flower units in a room don't always try to balance one vase with another. Sometimes on a mantel, a large vase of flowers at only one end is effective, particularly if it is complemented at the other end of the mantel with an interesting pewter

White Rose Service Station Fitted for All Automotive Work

Modern Appearance and Equipment and Expert Attendants Ensure Ultimate in Service For Patrons.

The new White Rose Service Station, located at the corner of Spruce Street and Second Avenue, recently opened its doors for business. It will be operated by Arthur and Gordon Campbell, who, in addition to being expert service station attendants, are automotive and electrical experts.

The station is attractively finished in clean white. It is well provided with parking space and carries automotive equipment as fire as any in the North. It is well fitted to do generator, carburetor, starter, ignition, battery and fuel pump work.

Modern rest room facilities are provided for motorists.

St. Mary's Journal-Angus:—Dinner—"I see that tips are forbidden here." Waitress—"Bless you heart, sir, so was the apples in the garden of Eden."

Toronto Telegram:—It's hard to have a song on your lips when you have to face the music.

LOANS
On First Mortgages

Available in Timmins, Schumacher, and South Porcupine, for commercial buildings, apartment houses, new homes, and improvements. Paid back by monthly payments over a number of years.

APPLY
J.J. McKAY
REAL ESTATE INSURANCE STEAMSHIP OFFICE
20 Pine St. N., Timmins, Phone 1135
and 40 Main St., South Porcupine, Phone 285

WHEN YOU BUILD! WHATEVER YOU BUILD!

BUILD WITH
Bricks or Blocks

Bricks and Cement Blocks For Sale
Sand and Gravel
Cement Mixers For Rent
Contract Excavations and Trucking

Porcupine Brick & Block Supply Co.
Plant 61—63 COLUMBUS AVE. PHONE 1680

BUILD OR REMODEL NOW!

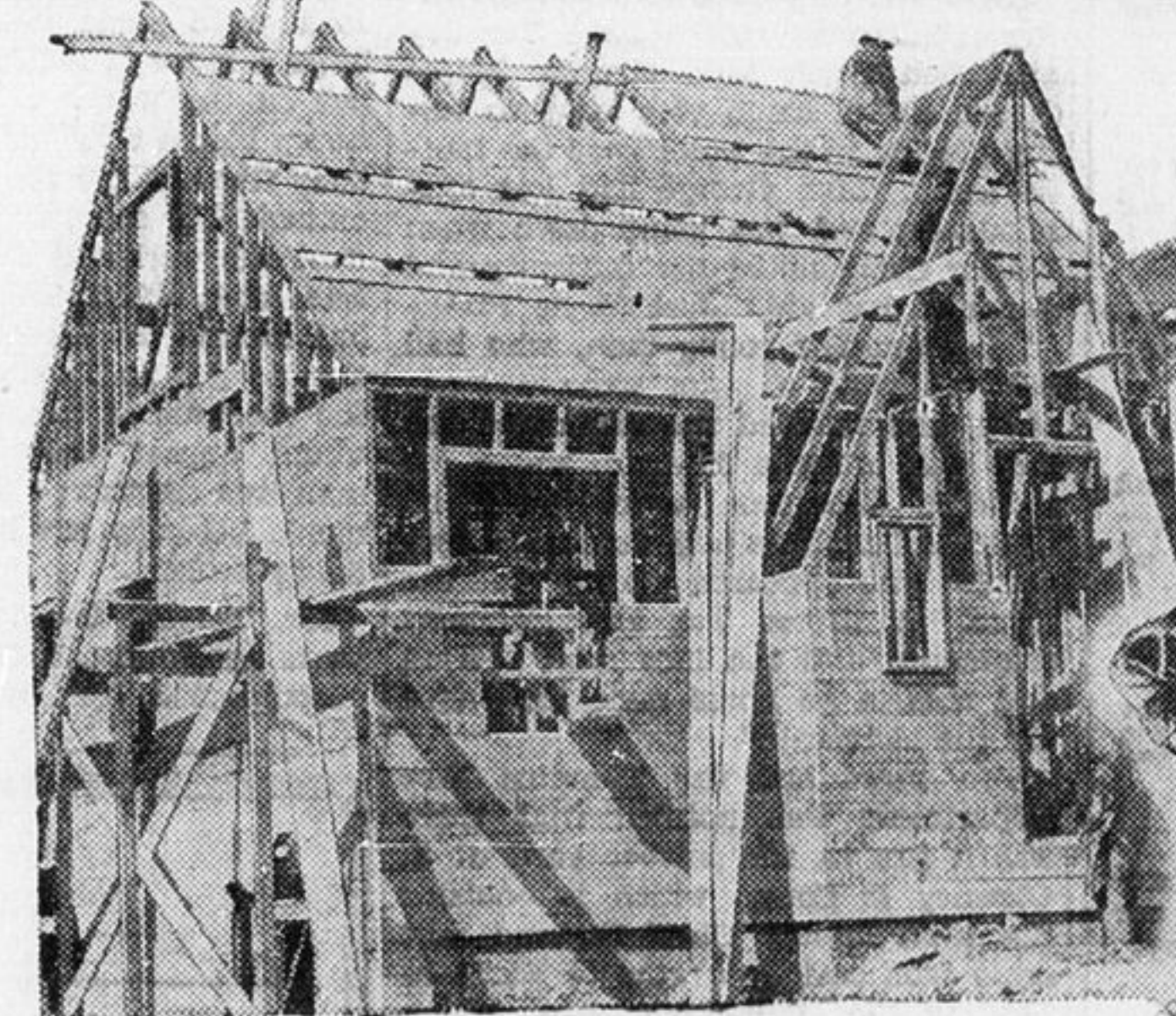

LUMBER AND BUILDING MATERIALS
AT LOWEST PRICES

- Asphalt Shingles
- Brick
- Cedar Siding
- Cedar Posts
- Cement and Lime
- Cement Blocks
- Doors (all kinds)
- Fir Lumber
- Flooring
- Flue Lining
- Frames (Door and Window)
- Glass
- Insulation (Red Top Wool)
- Insul Board
- Insul Brick Siding
- Lawn Fence
- Locks and Butts
- Lumber
- Metal Corner
- Mouldings
- Nails
- Oakum
- O.P.W. Paints
- Plaster
- Rocklath
- Roofing
- Sash
- Sheetrock
- Shiplap
- Veneer
- V-Joint

COMPLETE STOCK AT ALL TIMES

FELDMAN TIMBER COMPANY LIMITED
LUMBER and BUILDING MATERIALS GENERAL CONTRACTORS

Head Office Schumacher Phone 708 Mill Office Timmins Phone 709

LIVING FORESTS
FILL DAY-EMPLOYERS!
A DEAD FOREST EMPLOYS NOBODY
NEXT TIME YOU ENTER THE WOODS TREAT FIRE AS A DEADLY DANGER!