

To-day's Planning Moves Towards Simplification

Has Been Responsible for Many Worthwhile Improvements in Materials and Methods of Construction. Experiments Being Constantly Carried Out. Some of the Places Where Simplification Works.

(By Douglas C. Winter)

Woven into the fabric of current trends in planning, as already materialized in many buildings to the benefit of their occupants, is the principle of simplification. Expressed in a variety of ways, this underlying motif has been productive of many worthwhile improvements in materials and methods, all directed towards the reduction of effort in housekeeping and construction and maintenance cost. Anything that promises the elimination of trouble and effort in the management of the household and the increase of leisure

tion makes possible the contraction of space required for the passage-ways to a fraction of what was formerly thought necessary.

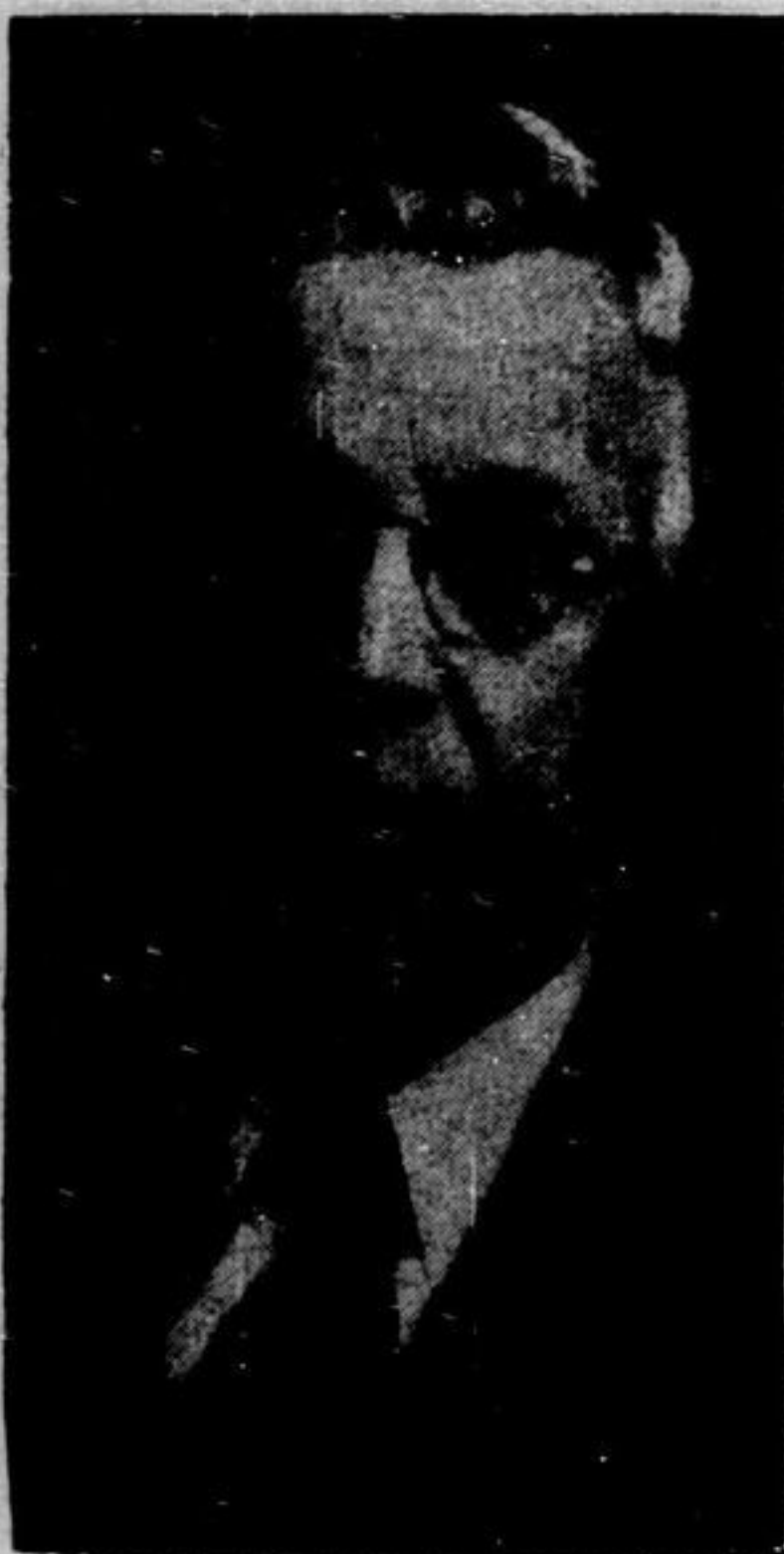
Where maximum use of a very restricted area is desired, the tendency is to cut down the size of the dining room, yielding the space so gained to the living room. Sometimes these two rooms are opened up into one unit; this may serve the requirements of individual families, but as a general rule it is inadvisable, as the opportunities for privacy are thereby greatly restricted.

Skillful placing of mirrors will aid materially in giving the illusion of space; and while an illusion is far from being the real thing, it is a legitimate vehicle to use if it succeeds in overcoming the sense of confinement that one has in an unavoidably limited space. A narrow hall loses its cramped appearance with the judicious use of mirrors on one of its side walls. Many a living room has been greatly improved by surrounding the fireplace with mirrors from floor to ceiling; and the lighting effect is also enhanced thereby.

RECESSED COILS WILL GIVE MUCH EXTRA SPACE

Much additional wall space for arrangement of furniture can be obtained by recessing radiators into the wall, and it is usually advisable to do this when the warm weather starts and the heat can be turned off. The radiator need not be placed under a window, as tables, low desks, or chairs may be placed in front of radiator grilles without interfering with the heating of the room.

Has Built Many Homes



Among the several contractors in the district who from the early days have been adding to the development and expansion of the community. D. Martin has to his credit as a contractor the erection of a large number of attractive homes, and other substantial buildings, schools, stores, etc.

time is tried out, sooner or later, in some new building. Inevitably some of the rosy promises are unrealized, while others more than fulfil the hopes of the pioneer users.

Simplification is sometimes expressed in the use of plain, unbroken surfaces made possible by the invention of new materials, also large panels made from fibrous substances under heavy pressure and given a hard, impervious surface; while instances of the other kind are thin linoleum for wall finish, and very thin wood veneer mounted on paper for the same purpose.

Where a wood wall finish is wanted and the funds are limited this thin, mounted veneer affords a method of realization at greatly reduced cost. It has the advantage of easy application, is readily adapted to rounded or angular surfaces and does not reduce the effective area of the rooms in which it is used. Linoleum is almost as adaptable although more expensive to buy and to instal; it is a material capable of standing, a great deal of punishment, a point worth noting where unusually hard wear or abuse is anticipated.

Angles Avoided

Elimination of mouldings or their drastic reduction is another device. All small surfaces with re-entrant angles are dirt collectors and are difficult to keep clean. An excellent illustration of the labour saved is seen in the time required to clean or re-finish a flush veneer or slab door, compared with one having several panels surrounded by mouldings.

Noticeable in advanced planning is the effect of spaciousness gained without increasing the overall dimensions of the building. This is brought about by a more intelligent use of the space. Many houses have an excessive amount of space taken up with halls and passages that are of little value in use to the householder. Rearrangement of the rooms with a view to improved circula-



You Really Live
When You Own
Your Own Home

Home owners have so many things that are impossible in a rented place—they can garden to their heart's content; they get genuine happiness from working around their homes; they have the real pleasure and contentment that is the result of ownership! You don't need to envy people like that—be that way yourself! We'll build your home—to your specifications—and you can pay for it in monthly payments just like rent.

W. SEVERT BUILDING CONTRACTOR

153 Mountjoy St. Timmins Phone 279-J

Time Now to Store the Winter Woollens

Some of the Storage Boxes Now Available.

(By Elizabeth MacRae Boykin)

This is the last call for winter woollens! If you haven't got all of yours safely into the moth balls, it is just about your last chance to save them from their on-coming enemies, the perky little moths that are descending upon us. There are several new and practical containers for the household where storage space is limited. Among the best looking are the blanket boxes. They are finished with wood grain paper so that they can stand in a corner in a pushancy, although they tuck nicely into corners of closets too. One fits in the other when not in use. They are made just the right size to hold a wool blanket and are useful for storing household linens as well.

Other useful moth storage cabinets are those with the roll fronts, built on principle of the roll top desk—no more bother with out-swinging doors. Some of these are quite presentable to use, in case of necessity, in the corner of a room as a closet. They provide dust-proof storage and space to hold as many as fifteen garments, with compartments below for accessories. This type of cabinet can be used the year round, if you like, as an extra closet.

There are also various other types of convenient storage boxes on display at your favorite department store. Among these are the lift-lid chests built to fit under the bed and use that otherwise wasted space. And we are quite a defender of the cedar and camphor wood chests, which are now finished in exterior wood finishes to match your bedroom or living room furniture. These lift-lid chests are invaluable storage places for all kinds of infrequently used things, and of course a great protection against moths as well.

(Released by Consolidated News Features Inc.)

Attention Carpenters!



Our Stock Of

Building Hardware and Carpenter's Tools IS COMPLETE

Home Builders! These Items come under The Home Improvement Plan

BRANDRAM, HENDERSON PAINTS

B-H HOUSE PAINT

Gal.	½ Gal.	¼ Gal.	Pint	½ Pint
\$4.00	\$2.20	\$1.20	.65	.40

B-H CHI-NAMEL (Fast Drying)

Gal.	½ Gal.	¼ Gal.	Pint	½ Pint
\$6.00	\$3.15	\$1.65	.95	.55

B-H VARNISHES

Gal.	½ Gal.	¼ Gal.	Pint	½ Pint
\$5.75	\$3.00	\$1.65	.90	.55

Screen Doors

Window Screens

Fencing and Gates

Cement

Gyproc, Nails, Etc.

Everything to

Improve Your Home

Chas. Pierce & Sons, Ltd.

HARDWARE JOBBERS

16 THIRD AVENUE

PHONE 16