



PLEASANT HOMES

by Elizabeth MacRea Boykin

ARE YOU BUILDING THIS SPRING?

Consider New Trends in House Planning—As Exemplified in Model Houses Being Constructed at New York World's Fair.

The arrangement of the rooms in the model houses in the real news in the "Town of Tomorrow" now under way at the New York World's Fair. Architecturally, about half of the houses are modern and half traditional. All are pleasant, practical, acceptable. In materials, equipment and construction they will represent the most up-to-date developments and the plans reflect important trends in layouts.

It takes imagination and courage to have the entrance of the house through the garage, as it is in the design of one of the houses. But yet the idea is logical once you stop to think how the entrance is made through the garage. So in this house a double garage is the street entrance, with all kitchen and service facilities of the house likewise on the street side. Thus the living rooms may overlook the garden to the rear where no service details can interfere with spaciousness and privacy. On this back side of the house there is a gracious portico which serves as a private entrance.

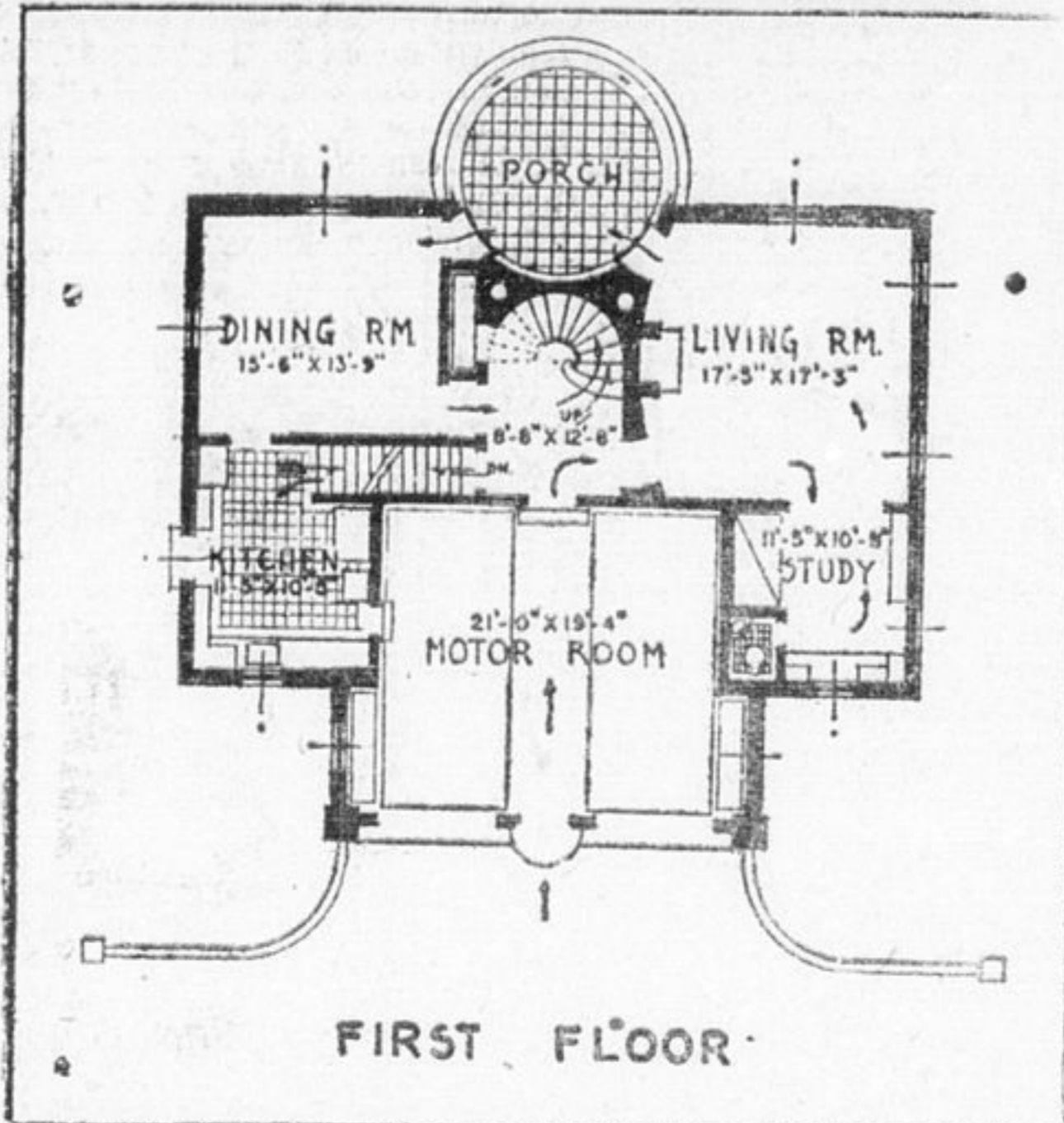
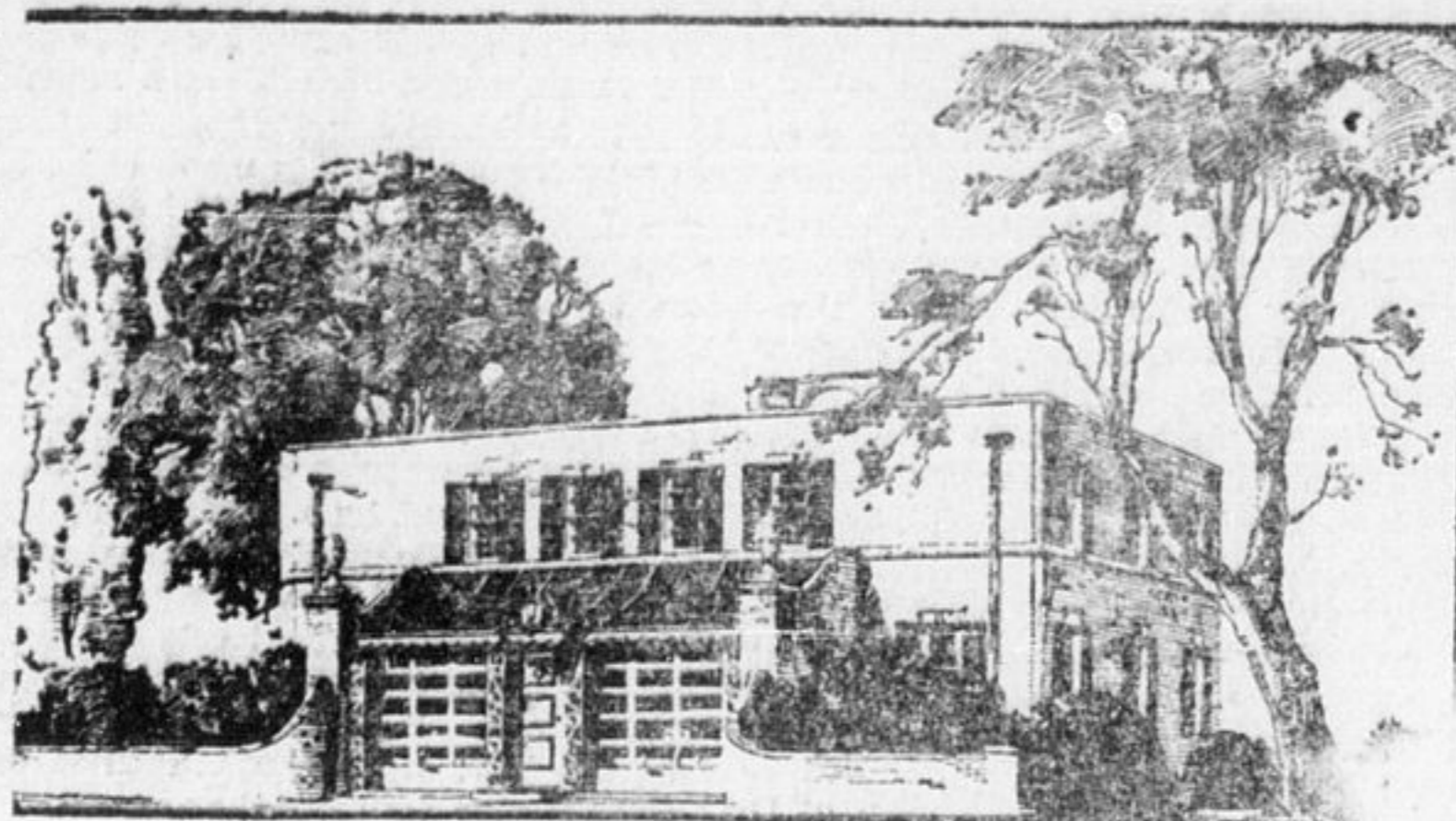
Dignified Approach
But about that garage entrance on the front, which is probably bothering you plenty—with doors of interesting design, it can provide an approach that is entirely dignified and appropriate as you can see by the illustration on this page. Inside the garage, the floors are tiled, and the walls are—guess what—wall papered! And, of course, you'd have to find another place for storing your debris. An attractive entrance leads from this garage into the central hall and thence into the living room. . . . no more leading visitors through a disreputable basement.

Another more expensive house has the three major downstairs rooms (living room, dining room and centre hall) so arranged with sliding partitions that they can be thrown together into one huge hall room nearly sixty feet long. Thus is an occasionally used feature of a very elaborate house included in a medium-sized house in which all the space must be utilized all the time.

No Dining Rooms
None of the smaller houses in the World's Fair group will have dining rooms. But in most of them you will find rather gracious facilities for dining built into the plans. Our favourite, in a modern house, has a deep circular bay window designed as a dining alcove with seats built around the bay and arranged for a round table. There is a drapery partition that can be drawn to close off this end of the living room when the table is being set or cleared.

A dining alcove, is created in another of these houses by the use of a balcony rail, which makes an L around which cushioned seats will be built. All of the larger houses have dining rooms. There is an indication from these plans that the old conservatory is coming back. In one of the traditional houses there is a conservatory like those of the last century. Again in a modern house there is a conservatory that should give a lot of people ideas.

Probably the basements of these model houses present as fresh a bit of thinking as has been done. For in four of the houses the basement is



Here is a house with the entrance through the garage. The kitchen and service departments of the house are also on the street side. A very practical idea when worked out so pleasantly.

eliminated altogether. And why not, say the architects, when modern heating systems occupy a small space, are clean and require no fuel storage space; there's no good reason why they can't be incorporated in the first floor. It saves a great deal on the cost of the house, of course. In some cases it is even put in the kitchen. But more often it is combined with a first floor laundry. In some of the larger houses there isn't a basement, either, though usually plans for the larger houses call for basements. Actually at the Fair these basement layouts will not be included in the house since the ground in Flushing Meadow isn't suitable for excavation. Where basements are indicated, these will be shown separately in the Domestic Utilities Building which is in the grounds of the Town of Tomorrow.

Only one of the houses will be completely air conditioned but all will be entirely insulated. Another will have a dictagraph in every room so that you can talk by phone from room to room. Construction features and inner ma-

terials used will be dramatized by panels of glass set in the floor or in the wall so that we can actually see of what a house is made. If you are interested in obtaining plans for any of these houses, write me for further details.

About Harbingers of Spring and So On

(By Thomas Richard Henry in The Telegram)
Harbingers of spring are in the air (or wherever harbingers hang out). We are referring to harbingers, and not to scavengers, although there will be a great need of scavengers of some kind in Toronto if the householders insist on putting out their garbage on garbage day, and leaving it out until the city gets ready to collect it. What a picnic the dogs have been having the last few days. But to get back to our harbingers of spring. The first one is sent out by the City Hall to close up the hockey cushions.

Accepts the Inevitable



President Manuel Azana of Loyalists, Spain resigned Feb. 28. In his letter of resignation he said he wanted peace, considered defeat inevitable and that the Spanish people shared his belief and that the loyalist general staff had concluded victory was impossible.

Cullagh arrived and the Globe robin seemed to disappear. We think that we should start on investigation into "Who killed the Golbe robin?"

All Right Now
Our attention is called to a newspaper headline that we had missed. It states, "Reorganize Police Force to Fight Criminals." Quite reasonably, the reader asks what was the purpose of the police force before the reorganization. He hazards the guess that maybe they were just there to hand parking tickets on cars. But it's all right now. The police force is reorganized to fight criminals.

The news photographers seem to be a little hard-pressed to find new poses. With the ladies it is quite easy. They stick to the tried and true method of concentrating upon graceful props. When it comes to men it is not so easy.

Nobody is much interested in hirsute male underpinning—so what to do? We notice one of the badminton champions is depicted washing his face.

We expected that badminton players washed their faces sometime. But we are not interested enough in their technique to have any particular desire to see them caught in the act. This particular player, if anybody cares, uses two hands with face turned sideways (or maybe the face turned sideways was not for breathing purposes, out just to look at the camera).

Made in Japan
A friend of ours who has travelled in the Orient, says that the Japanese try to imitate Scotch whisky.

If you order whisky in Japan the proper procedure is to study the label carefully. If it is "Japanese made" Scotch, there is sure to be a typographical error some place.

Carrying out this idea, we have a picture before us of a label from a "Scotch" whisky "made in Japan," bottled by Glasgow, which means "K. Glasgow Ltd." and not the city of "Glasgow."

It has a picture of a man who looks something like "Johnny Walker," and it calls the whisky "Jockey-Royal."

The spelling of "Jockey" sort of bears out our friend's contention. Incidentally, we hear that Japan is going strong after the "Singer" sewing machine trade in the Orient.

Mother of Timmins Resident Dies at Chartrand Corners

Noelville, March 8.—Funeral services for Mrs. Louis Seguin, who died at her home at Chartrand Corners last Thursday, were held Monday morning at 9:30 o'clock from the home to the Roman Catholic Church, where Rev. Father J. M. Leclair officiated. Pallbearers were: Beaulieu, Jean Seguin, Isidore Beaulieu, Andre and Adelard Seguin, and Adelard Dupuis, of Ouellette. Interment was in the Roman Catholic cemetery, Noelville. The late Mrs. Seguin, a resident of Noelville for the past 26 years, was 75 years old and was born in Rigaud, Que. Before coming to Chartrand Corners she had resided at St. Anne de Prescott, St. Eugene, Montreal and Ripon. Her husband predeceased her. Surviving are five daughters and four sons: Mrs. Uric Lefebvre, Mrs. Isidore Beaulieu, of Noelville; Mrs. Albert Beaulieu, of Verdun; Mrs. Joseph Demers, of Metagami; Lilliane Seguin, at home; Horce, of Noelville; Andre, of Charlton, Ont.; Jean, of Chartrand Corners; and Adelard, of Timmins.

Ottawa Journal: Well, one big problem has been solved: The King and Queen are going to Windsor, and so Windsor will stay with the Dominion.

LOANS
on First Mortgages Available in
TIMMINS SCHUMACHER SOUTH PORCUPINE
Paid Back Monthly over 3 to 5 Years.
APPLY TO
J. J. McKAY
REAL ESTATE STEAMSHIP OFFICE
20 Pine North Timmins
Phones 1135 & 1580

Porcupine District Girl Guides

Greetings! Rangers, Guides and Brownies!
During this month we are eagerly looking forward to a visit from our Divisional Commissioner, Mrs. Tomney. This visit is always interesting to the Guides as well as Girl Guides; and Brownies, usually just "can't wait," for the occasion.

However, none of us need to "wait" because there is much to be done in anticipation of this visit.

- Guides! check up on yourselves:—
- (1) Are you on time for company meetings or do you come straggling in, five or ten minutes late, out of breath, and disturbing a meeting that has already been called?
 - (2) Your uniform—is it pressed and being worn, or is it hanging at home on a hanger, or worse still, lying crumpled in the drawer? Is your hat well brushed, and brim flat? Are badges sewed on securely, and name tapes clean? What about your belt? Is it in good order and buckle polished? You should wear polished shoes and black stockings to be in complete uniform.

One thing I have noticed, in practically every Guide Company, you find one Guide at least, who has a slip showing below the hem of her uniform. This spoils her appearance. Do you know, we are NOT opposed to wear slips with our uniforms? That is why they are of thick heavy material. Black knickers should be worn but not a slip.

- (3) What is your attitude when you go to Guide meetings? Do you go because you have nowhere else to spend that evening, or do you look forward to "Guide Night"? Loyalty means regular punctual attendance. I hope you have realized that "going to Guides" is a training in many ways, and that you will derive a great deal of benefit if you go with the idea of being helpful and doing your best to "play the game." This is a Brownie motto, but one that Guides too, would do well to live up to. After all Baden-Powell, meant Guiding to be a game—played fairly and according to our rules (Guide laws).
- (4) What about your patrol boxes and roll books? Are they neat and orderly, and marked up-to-date? Are you proud to show them to a visitor?
- (5) Are you keeping a patrol log? If not, begin one now. Next month I will give you some new ideas on patrol log books.

Captain and Brown Owls! What about your organization. Are Lieutenants, Tawny Owls, and Pack Leaders, given definite work to do? Have they definite responsibilities? Are the Patrol leaders doing their share of instructing, do they feel it is their responsibility to see that their patrol members are taught and passed in their Tenderfoot, and Second Class badge work? Is the Court of Honour functioning properly?

When a commissioner visits the Company or Pack, she is not looking for a few Guides or Brownies with rows of badges, but a whole Company or Pack, working and playing in games, yet as one complete unit, as far as aim and progress is concerned. She expects to find that whistle or silent signals are obeyed, promptly and cheerfully—is very disappointed if she finds Guides or Brownies, calling any leader by her first name—so never tolerate this at any time.

The Commissioner expects to find a programme planned for meetings—in Guide Companies, Court of Honour should have a say in the plan. She expects to find all ceremonies such as flag-break, Fairy Ring, Grand Howl, etc., carried out properly and with dignity.

The programme in both Guides and Brownies, should include ceremony, games, test work, and singing or stories. Each meeting should include something which will help the Guide or Brownie to realize that the laws and promises are real, and should be a part of her daily life.

Lastly, never dismiss Brownies or Guides without permission from the visiting commissioner, better still let her dismiss your meeting.

Rangers, I am pleased to hear you are having such successful meetings. Keep up the interest. Rangering is a very important part of the Guide movement. It gives its members an opportunity to put into "Service" all that they have learned during Girl Guide

Painful to Bend a Joint

days, and to the Ranger who had never been a Guide, it means a chance to benefit by receiving an advanced Guide interest, and makes her a part of the great organization whose foundation is built on "Preparedness and Service."

Brownies! are you working for proficiency badges? Here is a suggestion: Begin the Collector's Badge. Gather newspaper clippings and news pictures, etc., concerning the visit of their Majesties to Canada in May. Mount these neatly in a scrap book, and in proper order. It will give you a memento of this visit, as well as winning a badge—if well done.

The Dome Brownies had a happy party with the Buffalo Ankerite Pack as guests. Games were played, a doll dressing competition followed, and a nice lunch was served.

On Saturday last the Dome Girl Guides had a merry sleighing party. Two sleighs conveyed the Guides to South Porcupine and back to their hall, where games and dancing were enjoyed before lunch was served.

Monday, March 13th, is to be a big evening for the 1st Timmins Girl Guides and their new Brownie Pack. Some Guide Captains seem in doubt as to whether or not a piano accompaniment is permissible for the singing competition. Yes, a piano may be used—but if you do not have one in your hall, do not lose heart, because the judging is based mainly on united effort, every Guide doing her part, beginning to sing together, and singing with enjoyment.

As you all have been working at this competition and singing the better type of songs, I'm going to give you a nonsense verse just for a change.

With all due credit to the English Boy Scouts, who first sang the parody, I'll give you the Guide version, sung to the tune of "Ain't Gonna Rain No More."

"Madam eats roast chicken Captain she has duck,
Leutenants they get bully beef
And think themselves in luck, P.L.'s have tomatoes
Seconds have good ham,
But there's nothing left
For poor Girl Guides
But a piece of bread and jam."

Chorus
Oh! we ain't gonna camp
No more, no more.
We ain't gonna camp no more.
We went last year, and the year before,
But we ain't gonna camp no more.
Good Guiding to you all!
Captain L., District Guider.
Dome Mines, March 4, 1939.

Hospital Case of Rheumatism

The value of perseverance with Kruschen, in the treatment of some cases of rheumatism, is proved by this man's experience. He says:—

"I was abroad for over seven years. When I returned I began to suffer from rheumatic pains—particularly in the feet and arms, and I was eventually taken into hospital, unable to move without groaning with pain. When I left the hospital after two months, I was somewhat better. I was recommended to take Kruschen Salts, have taken them continuously, and until now I am entirely free from pains. I would not be without my Kruschen Salts for anything."—M.B.

Two of the salts in Kruschen are effecual solvents of uric acid the excess of which is decidedly injurious. They swiftly dull the sharp edges of the painful crystals—the cause of pain and stiffness—and convert them into a harmless solution, which is then expelled through the natural channels.

Smith Falls Record-News: According to press despatches, quets are being formed before the coffee shops in Germany because of scarcity, such spectacles being present only in dictator lands, whether of the Right or Left. And yet there are democrats who would fasten regimentation on their democracies.

Try The Advance Want Advertisements

When Building Avoid Costly Mistakes

Have your home designed by a skilled architectural draughtsman—one who will plan your home to suit the exact needs of your family yet save you money through his knowledge of building construction.

No charge for preliminary sketches and building costs. Enquiries Invited

Lawrence Pacey

Architectural Draughtsman
Apr. 2, 63 Wilson Ave. Phone 975

Order Your Coal NOW From Fogg's

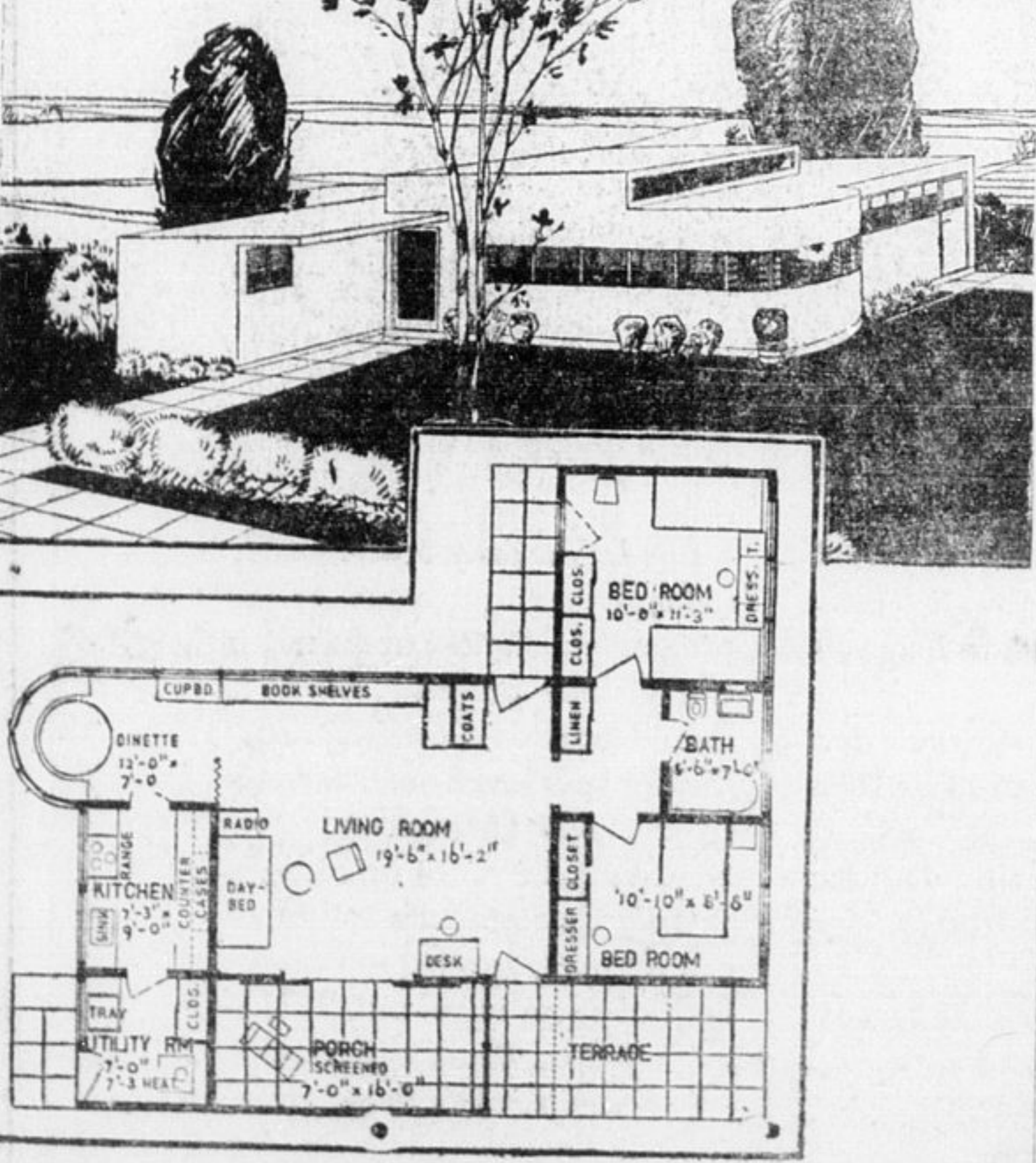
Quality COAL

WESTERN CANADA COAL—ALEXO AND CANMORE BRIQUETTES
WELSH AND AMERICAN ANTHRACITE
RED RIVER SMOKELESS—NEWCASTLE
RED JACKET—Egg and Stoker Sizes
RUSSIAN—Large Household Size

John W. Fogg Limited

Lumber, Cement, Building Materials, Coal and Coke, Mine and Mill Supplies.

Yard—Schumacher Phone 725
Head Office and Yard—Timmins Phone 117
Branch Office—Kirkland Lake Phone 393



The trend away from dining rooms is illustrated in this modern house where the dining alcove is arranged in a bay. The space is normally a part of the living room although a curtain is planned to be drawn across to give privacy during preparation or clearing of meal.

INSURANCE

AND REAL ESTATE IN ALL BRANCHES

HOUSES AND LOTS FOR SALE
CONVENIENT TERMS

SIMMS, HOOKER & DREW

13a Pine Street North Timmins Phone—Office 112
Residence 135

B. P. FLEXIBLE TILE FLOORING

A NEW TYPE FLOORING FOR THE HOME

Stands Heavy Wear - - - Needs Little Care

Provides for each room a floor of rich beauty—beauty that is permanent because the coloring goes right through these composition asphalt tiles. Resilient and quiet, B. P. tile floors are easy to keep clean and last a lifetime under hard wear. Safe from damage by fire or water.

Laid right over wood or concrete by our own approved specialist and fully guaranteed.

Flexible tile in a variety of marbled effects and rich colours is particularly suited to your

RECREATION ROOM
SUN PORCH
BATHROOM
KITCHEN
HALL

HILL - CLARK - FRANCIS LIMITED

Phone 4000 GENERAL CONTRACTORS Cor. Pine and First