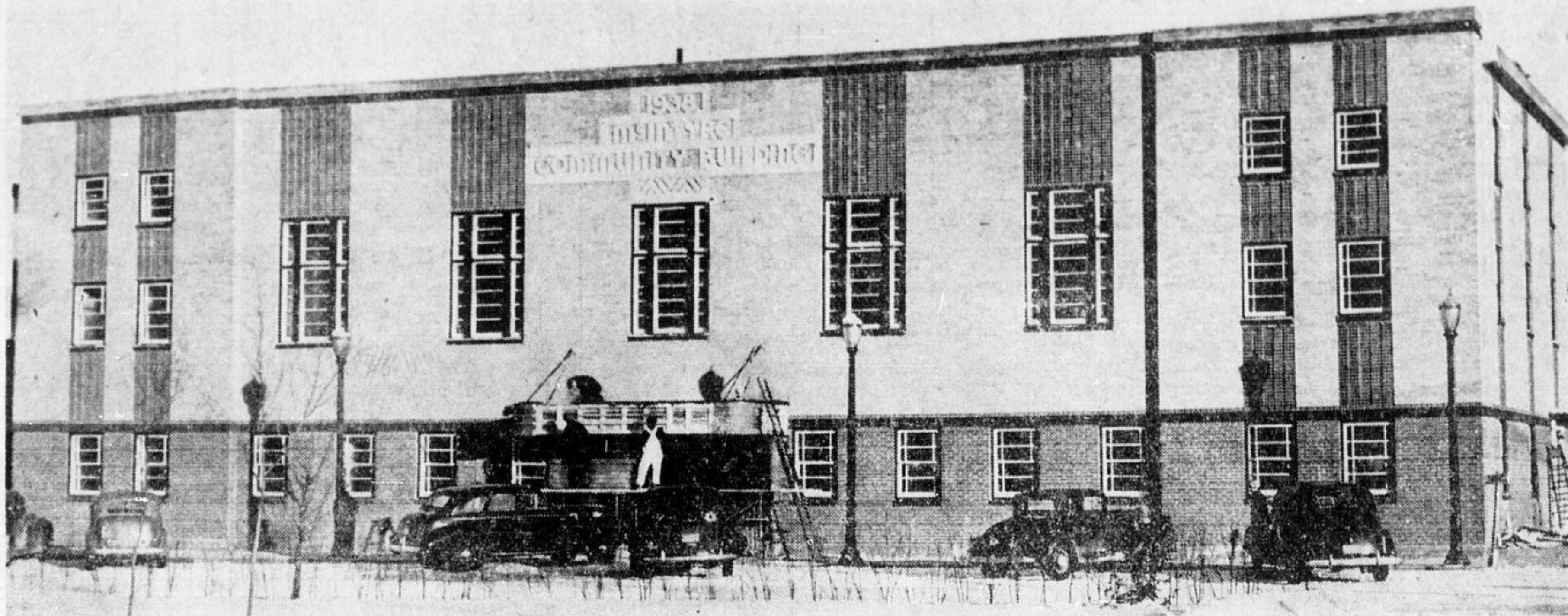


NEW McINTYRE COMMUNITY BUILDING OPENED

FRONT VIEW OF THE NEW McINTYRE COMMUNITY BUILDING



This view of the new McIntyre Community Building from the front. At the top will be noted the inscription in stone, "1938—McIntyre Community Building," and below in the centre the marquee over the entrance. The new structure makes a very handsome addition to the public buildings not only of Schumacher, but of all the whole North. The official opening of this artistic and modern new building was a gala event last week. The

winter carnival, "The Northern Lights of 1939," by some fifty members of the Granite and Toronto Skating Clubs, presented on Thursday evening by the McIntyre Porcupine Mines for its employees, and on Friday and Saturday evenings sponsored by the Schumacher Lions Club, the Timmins Kiwanis and the South Porcupine Kiwanis, was the biggest ice feature ever shown north of Toronto. (Advance Staff Photo)

Miniature Maple Leaf Gardens Arena

But will Seat 1850 with Room for 1,000 More.

Mr. J. P. Bickell, president of the McIntyre, is one of the directors of the Maple Leaf Gardens, Toronto, and the new Community Building at Schumacher is patterned after that structure, "with some improvements," one Toronto gentleman asserted last week.

The artificial ice surface is regulation hockey size, while there are excellent dressing rooms, first aid room, and all other "city" advantages and conveniences.

All who took a trip through the new arena Thursday night were fairly "thrilled" with this new asset for the people of Schumacher.

Other References to Opening of Arena

Report of Event Sponsored by Lions and Kiwanis Clubs in Other Section.

Elsewhere in this issue will be found further references to the McIntyre Community Building and its official opening. The report of the event on Friday and Saturday night sponsored by the Schumacher Lions and the Timmins Kiwanis Club and the South Porcupine Kiwanis will be found on page one of this issue and following pages.

Several Factors in Success of Opening

Special Mention Deserved by Croatian Orchestra, Lions Boys' Band, High School Girl Ushers.

Among the several factors which contributed to the success of the official opening of the new McIntyre Community Building on Thursday evening, was the playing of the Croatian orchestra and that of the Lions Boys' Band and the ushering of the girls of the Schumacher High School.

The Lions Club band, under the able direction of F. J. Wolno, was located in the eastern end of the arena. It played prior to the programme and at intermission. In their smart costumes the boys were a decorative and melodious addition to the evening.

Girls of the Schumacher High School acted as ushers. They wore white skirts and black crested jackets. The large crowd was efficiently handled by the girls. The capability of the girls reflected credit not only on themselves but on the High School.

Prior to the official opening of the rink, a reception was held in the auditorium. Mr. Bickell and other mine officials met invited guests. During the reception the Croatian orchestra played several selections. They wore their handsome native costumes and were directed by Joseph Begovich. Their stirring native string music was well received.

Interviewed by The Advance, members of the skating troupe said that they were delighted to again visit the North. Those who had been here on previous occasions were glad to return and those who had not been here before said that they were delighted to visit the interesting North Land.

"Everyone has been very nice to us," said Mrs. Gooderham. The sentiment was echoed by Mrs. McDougall. "We certainly think the new building is grand," they said.

In common with other newcomers to the North one member of the cast said, "I don't know what it is about this North Country, but whatever it is, it certainly gets you."

Notable Programme to Open McIntyre Arena

Fifty Noted Skaters Present Programme that Delighted Big Crowds. Lighting, Costumes, Music, Add to the Effectiveness. Comedy Numbers Added to Interest.

The intricate art of figure skating was beautifully demonstrated at the new McIntyre Arena on Thursday evening by a troupe of close to fifty skaters from the Toronto Granite and Toronto Skating Clubs. Dipping and gliding they appeared the very personification of the poetry of motion as they went through their difficult and graceful repertoire.

Figure skating is more than just acrobatics set to music, as the large crowd well realized before the evening was over. The smooth flow of motion, seen in the stars of the troupe, was never interrupted even though the figures they were performing required both strength and agility. The greater the performer the smoother seemed the motion. The two French stars particularly, Brunet and Joly, made their efforts seem positively easy. However, to anyone accustomed to watching athletics of any kind, it was perfectly evident that their timing was accurate to the split second; that their skill was

very great adapting themselves to the slow music, as they did. Another of the hits of the evening were the Caley sisters. Their several numbers were greeted with thunderous applause and time and again they were called back for encores, until it seemed that the diminutive girls would drop from fatigue.

Comedy was well handled by the men in the cast. Their Ballet Russe number was one of the high points of the programme. Clad in ballet costumes, which showed their masculinity off to the worst advantage they bur-

(Continued on Page Six)

McIntyre Community Building Formally Open

Finest Arena North of Toronto Opened to the Public on Thursday Evening. President J. P. Bickell Welcomes the "McIntyre Family" Magnificent Ice Event for the Opening.

A magnificently colourful and entertaining figure skating extravaganza was presented by members of the Granite Skating Club, the Toronto Skating Club, and special artists on Thursday evening at the formal opening of the new McIntyre community building and rink.

Present at the occasion were directors of the mine, Mr. J. P. Bickell, Mr. Fred Smith, and Col. MacDougall, invited guests, and employees of the mine and their families. A large audience was rightly generous with its praise of the excellent performance, and of the beautiful new building in which it took place.

Mr. R. J. Ennis, general manager of the McIntyre Mines, introduced Mr. Bickell, telling in a few well-chosen words about the history of the mine, and about the days when Mr. Bickell first came to the North Country.

"It gives me very real and very great pleasure to extend to the McIntyre family (as I shall call them) to the guests, and to the artists, a right royal welcome to this McIntyre Birthday party," said Mr. Bickell in opening his address.

The speaker outlined the growth of the mine and district, and added "I doubt if any other spot is enjoying happier conditions than those here today."

The purpose of the auditorium, he

said, was to give the employees a better opportunity to enjoy the advantages of the building, and to add to the social and recreational facilities of the building.

In speaking about the visiting skaters, Mr. Bickell said that the audience would be privileged to see some of the world's finest skaters. Included in the group were Canadian, Olympic, and World Champions, and the group was unexcelled by professionals anywhere, although every member of the skating cast except Brunet and Joly, were amateurs.

These outstanding artists had kindly condescended to perform at the opening, entirely without recompense. The majority of the skaters, stated Mr. Bickell have appeared in leading cities of the world, and he expressed gratitude on behalf of the McIntyre and the Community to the skaters for their delightful part in the opening ceremonies.

"On my arrival here this morning," said Mr. Bickell, "I received a letter from the employees of the McIntyre Mine, in which they expressed their appreciation." The speaker said he was deeply touched at this expression of appreciation.

In closing his address, Mr. Bickell said "I now declare the McIntyre Community Building and rink officially opened, and hope that it will radiate much added health and happiness to the community."

Famous Skaters Visited Kirkland

"Northern Lights of 1939" Made Hit at Other Gold Camp.

On their way to Schumacher for the official opening of the McIntyre Community Building, the fifty members of the Granite and Toronto Skating Clubs presented their ice carnival at Kirkland Lake on Wednesday. The skaters, many of whom had been in Kirkland Lake last year, were given very hearty welcome to the Lake Shore town. Their programme was greatly appreciated. After the ice event the Kiwanis Club members and their ladies gave a reception to the visitors.

Mr. J. P. Bickell, president of the McIntyre, and who was sponsoring the trip north of the skaters was among the speakers at the banquet in honour of the visitors.

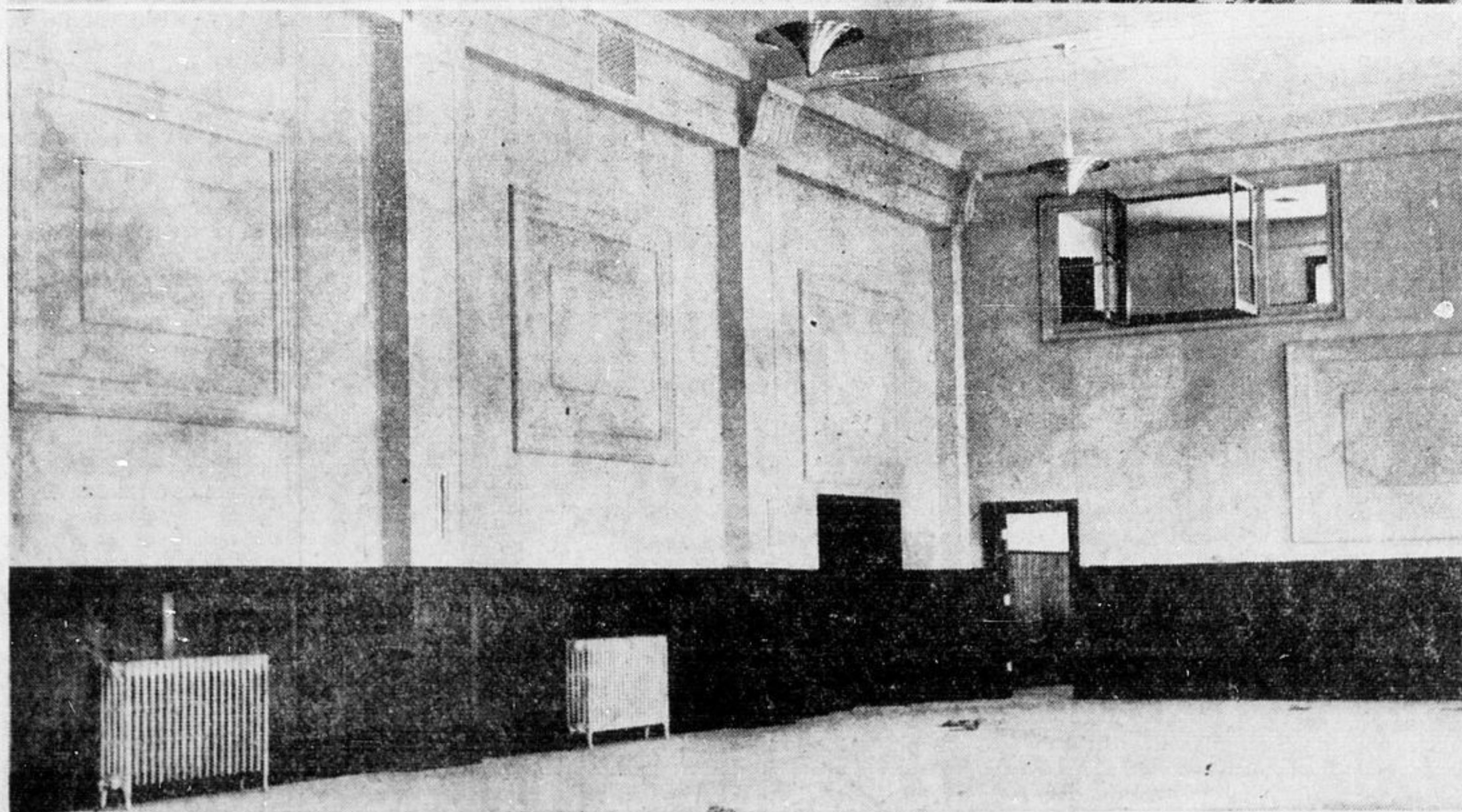
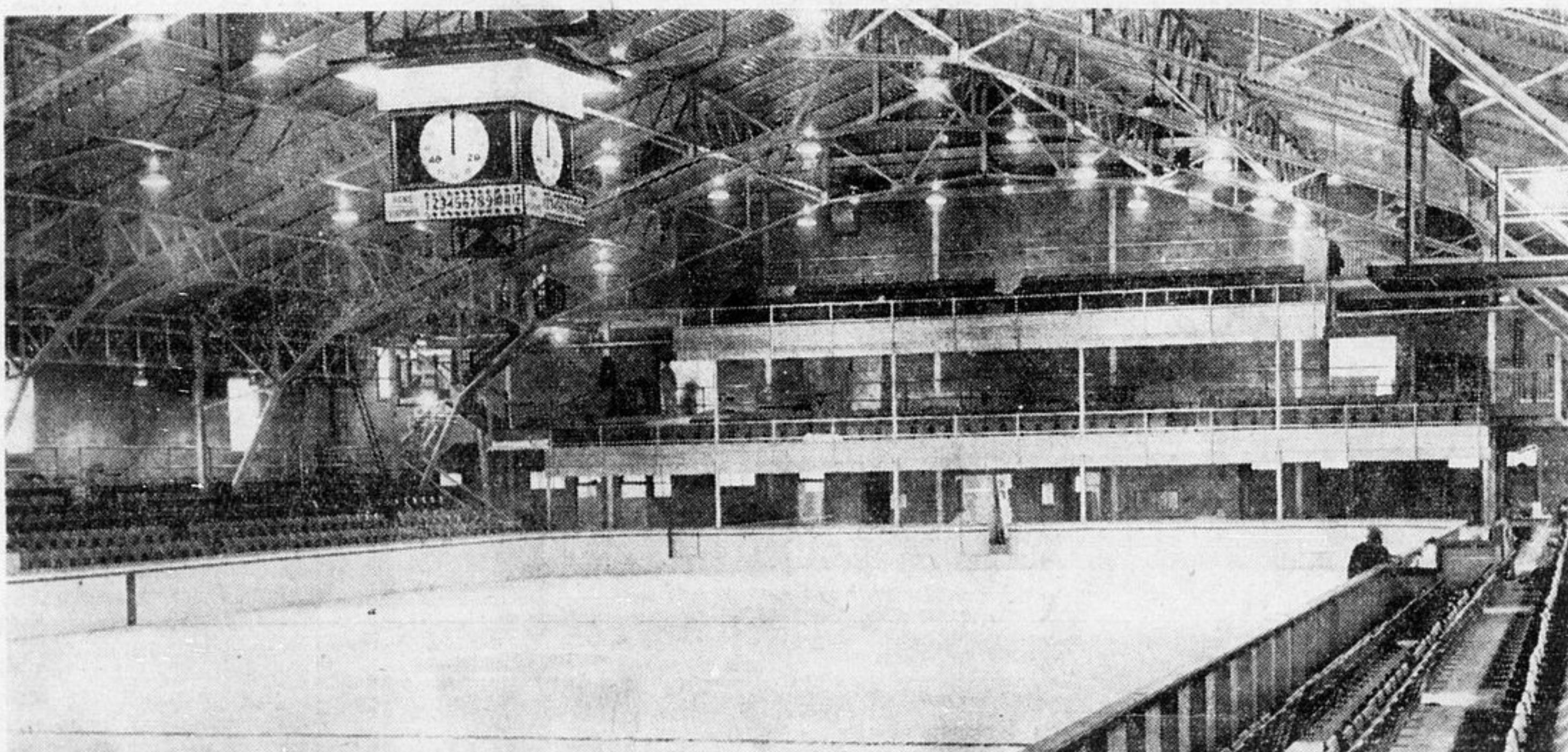
All Parts of Camp at Opening Events

Events on Thursday, Friday and Saturday Drew Crowded Houses.

The official opening of the McIntyre Community Building drew crowded houses from all parts of the camp. The official opening on Thursday night was for McIntyre employees and their families and there was a capacity crowd. Friday afternoon the McIntyre presented a matinee for the school children of Tisdale, and needless to say this meant another capacity crowd. Friday and Saturday evenings, the opening event, the winter carnival, "The Northern Lights of 1939," was again presented under the auspices of the Schumacher Lions Club, the Timmins Kiwanis Club and the South Porcupine Kiwanis Club. These two evenings the crowds came from Timmins, South Porcupine, Schumacher and the whole district round about. There were many so pleased with the building and with the ice carnival that they attended two nights, and some even thought three evenings none too much for such an excellent programme in so outstanding a building. At the events all the mines of the district were well represented and all were agreed in the highest praise not only of the new McIntyre Community Building but also of the wonderful ice event presented by the fifty talented skaters from the Granite and Toronto Skating Clubs.

North Bay Nugget: Orillia's chief of police says 80 per cent. of the crime in that town is the work of juveniles. Is that the way to act, with Santa Claus almost here!

McINTYRE'S HANDSOME NEW COMMUNITY BUILDING



McIntyre's elegant new Community Building, the finest of its kind north of Toronto, has an impressive exterior, while the interior is still more striking. In the pictures, the top view shows part of the hockey and skating arena, capable of seating 1850 and with standing room for 1,000 more. A feature is the clock and score board in the

centre. The bottom view shows a corner of the handsome auditorium in the new building. This auditorium is two storeys in height and is elegantly finished. There is a stage, dressing rooms and other accommodation connected with the big auditorium. (Advance Staff Photo)

Highlights of McIntyre Community Building

Accommodation for Practically 3,000 People. Most Modern Rink North of Toronto. Good Taste and Practical Construction the Keynotes of Handsome New Building.

In last Thursday's issue of The Advance there was a complete description of the new McIntyre Community Building. The following review is given in this issue to accompany the pictures of the new arena and the report of the official opening.

It is a great accomplishment and a compliment to the district!

Will seat one thousand, eight hundred and fifty.

Standing room for one thousand more.

Seats arranged to give full view from all points.

Only rink of artificial ice in this district.

Fixtures are simple, heavy, and in the best of taste.

Many brass fixtures.

Indirect lighting system in many parts, and in others lighting to best suit the needs of the room.

One of the finest rinks north of Toronto.

A miniature of the Maple Leaf Gardens.

Ice surface is of regulation hockey size.

Boarding at sides of rink is rounded at corners in approved modern style.

No more than three inches of ice to

cover the rows of piping.

Freezing mixture flows through pipes, which are visible through the ice.

Surface may be flooded and frozen, or melted and water drained off, very speedily.

A large tank at end of arena, under the seats, to be used in draining off and cleaning between periods.

Hot water is run through pipes to melt ice.

A large compressor provides necessary power for the operation of plant.

The same ammonia solution used again and again.

Six rows of seats along sides of surface.

More seats at both end in balconies.

Seats are painted in bright red and blue.

Players boxes at either side of ice surface, at the middle section of each side.

Press box and broadcasting booth, one on each side of arena, suspended from steel rafters.

A signalling system is installed in one of the boxes, connected with control room—press a button and score appears on the big clock suspended

(Continued on Page Six)