

# How to Build a Lily Pool to Grace Your Garden

**First Thing to be Considered is the Location. Two Kinds of Lily Pools, Informal and Formal. How to do Actual Construction. Caution About Construction.**

(From Building in Canada)

There is nothing that will add as much to the attractiveness of your garden as a lily pool. There are no flowers more beautiful, more endowed with a delightful fragrance or wider range of colors than Water Lilies.

Many are of the opinion that lily pools are expensive to build and require special care, thus limiting the enjoyment of a water garden to the wealthy. Just the opposite is true—no matter how small your plot of ground or how limited your funds and time, you can have the charm and loveliness that are characteristic of any water garden. Many of the most beautiful varieties are hardy and with just a little care can be kept from year to year.

In constructing a lily pool the first thing to decide upon is the location. The availability of sunlight must be considered as water lilies must have plenty of sun to bloom profusely.

There are, in general, two kinds of pools: The Formal, which includes all the geometrical shapes such as round, rectangular, square, etc., and the Informal or irregular shaped pools.

**Informal Pools.** An attractive pool of any size may be built without forms by simply hollowing out the chosen space to the desired shape and to about 30 inches in depth, the sides being trimmed to a slope of approximately 45 degrees.

Mix a stiff concrete, using one part cement to five parts fairly fine gravel which contains a considerable amount of sand (gravel should not be over 1/2 inch in size). Make the mixture thick enough so that it will remain on the sloping walls without running. Plaster the walls from the bottom to the top with 3 inches of concrete. Then, immediately place reinforcing of farm fencing in mesh not over 6 inches each way) over the concrete. Cover the wire with another 3 inches of concrete and smooth with a trowel.

**Formal Pools.** The rectangular pool is probably the most popular and the easiest to make.

Excavate to the desired depth, taking care not to cave in the sides—thus it is possible to use forms for the inner sides only. Place forms to set up about 6 inches, so that, when pouring the concrete for the walls, it will flow inside somewhat and form a lip into which the bottom or floor of the pool will knit. The floor should be poured before the walls have set hard. Farm fencing or steel reinforcing bars are advisable and should be kept near the centre of the walls and bottom: that is, in the centre of the cement when poured.

We recommend 6 to 8 inches of concrete for sides and bottom, believing that the extra thickness will save you trouble in the long run.

When the concrete has set sufficiently, forms can be removed. Rough spots should be rubbed down and a coat of wet cement paste applied with a whitewash brush.

**Caution.** New cement pools must be drained and rinsed out thoroughly three or four times within a period of a week or two. This will remove the alkali in new cement which is injurious to fish and plants.

## Inside Walls Very Important to Home

**Why Special Thought and Care Should be Given the Inside Walls.**

(By Allan Clark)

After all, you don't live on the outside of your house, no matter how new, how attractive it may be. Primarily—apart from a natural desire to have your home creditable to yourself and pleasing to neighbors and passersby alike—you are intent on the interior of your home, to the end that it may reflect your good taste and your good judgment; that it may respond to every demand in the way of utility and beauty; that it may fulfill every obligation which our present-day high standards of living impose.

And what are the chief elements of that home-interior on which we now lavish so much attention? Walls, floors, ceilings, woodwork—these form the background against which are imposed windows, doors, fireplaces and staircases; the structural elements which so easily can make or mar the artistic effectiveness of any home-interior. And it is a composite of all these varied elements that forms the stage for the furniture and the furnishings which go to complete the setting of our contemporary home scene.

Walls—did you note?—come first on the list of essential elements given above. And no wonder! Figure out their actual area in any room, and you immediately will realize why walls are so important. Whether you are building or remodeling, then, remember that the success of your whole project may depend on the right solution of the interior wall problem.

To-day—thanks to the strides made in the creation of wallboard of various types to suit all needs!—there need be neither the hazard in selection nor the delay and fuss in application, which used to mark the acquisition of good, sound, enduring interior walls. In the old days there were successive coats of plaster to apply, with carefully gauged drying periods in between; whereas, now, a reliable wallboard easily and quickly applied can supersede the conventional lath-and-plaster, and still provide satisfactory and long-lasting results. And, apart from the ease and speed with which they can be applied, these modern-day wall-boards offer possibilities for a pleasant variety of interior effects.

There are, for instance, wallboards of both smooth and textured surface which, though attractive in their natural buff colorings, can be finished in any desired colour by paint, stain or enamel; and there are other wallboards which perfectly simulate tile set in cement of contrasting color. Still another type of wallboard of soft neutral hue is susceptible to various treatments—grooved, bevelled or panelled, and stained, painted or stenciled. And there are mouldings and cornices of the same basic materials with which to complete any decorative scheme.

Every home-owner to-day is interested in insulation as an economic advantage, so the fact that they have insulating properties is another "feather in the cap" of the wallboards which are available for this year's building and remodeling.

## NEW HOLLINGER HOUSES



Showing the new Hollinger houses built on Patricia boulevard and other streets in the same locality for Hollinger employees. These are large double houses, fully modern and equipped for all home comforts. When the lawns are in they will make fine appearing homes. There are twelve of these double houses, accommodating twenty-four families. J. Van Rassel was general contractor, and D. R. Franklin, the architect. Work was started on these houses on Sept. 17th, 1937, and completed Jan. 20th, 1938.

Advance Staff Photo & Engraving

## To Do Away With Odors and Gases from Drains

Writing to the magazine, "House Beautiful," a correspondent tells of a most unpleasant odor coming up through the basement drain. He asks if this is dangerous, and if so, what can be done about it. This is the answer to the question:—

In rare instances sewer gases have been known to be poisonous, and sometimes explosive; at least they are objectionable. The condition is undoubtedly due to a faulty water seal in the trap of your basement drain. The trap consists of a U-shaped turn in the pipe directly under the drain, which retains enough water to form an air-tight and vermin-proof barrier between the sewer and the interior of your home. However, due to the long periods of time during which the drain is not used, this water—unless replenished—evaporates, leaving an open passage through which gases enter. There are two remedies that you may use. One is to pour a bucket of water down the drain at least once every three weeks. This will do the trick, but depends on the human memory—a notoriously fallible faculty. The other method is to install an automatic trap valve which keeps the

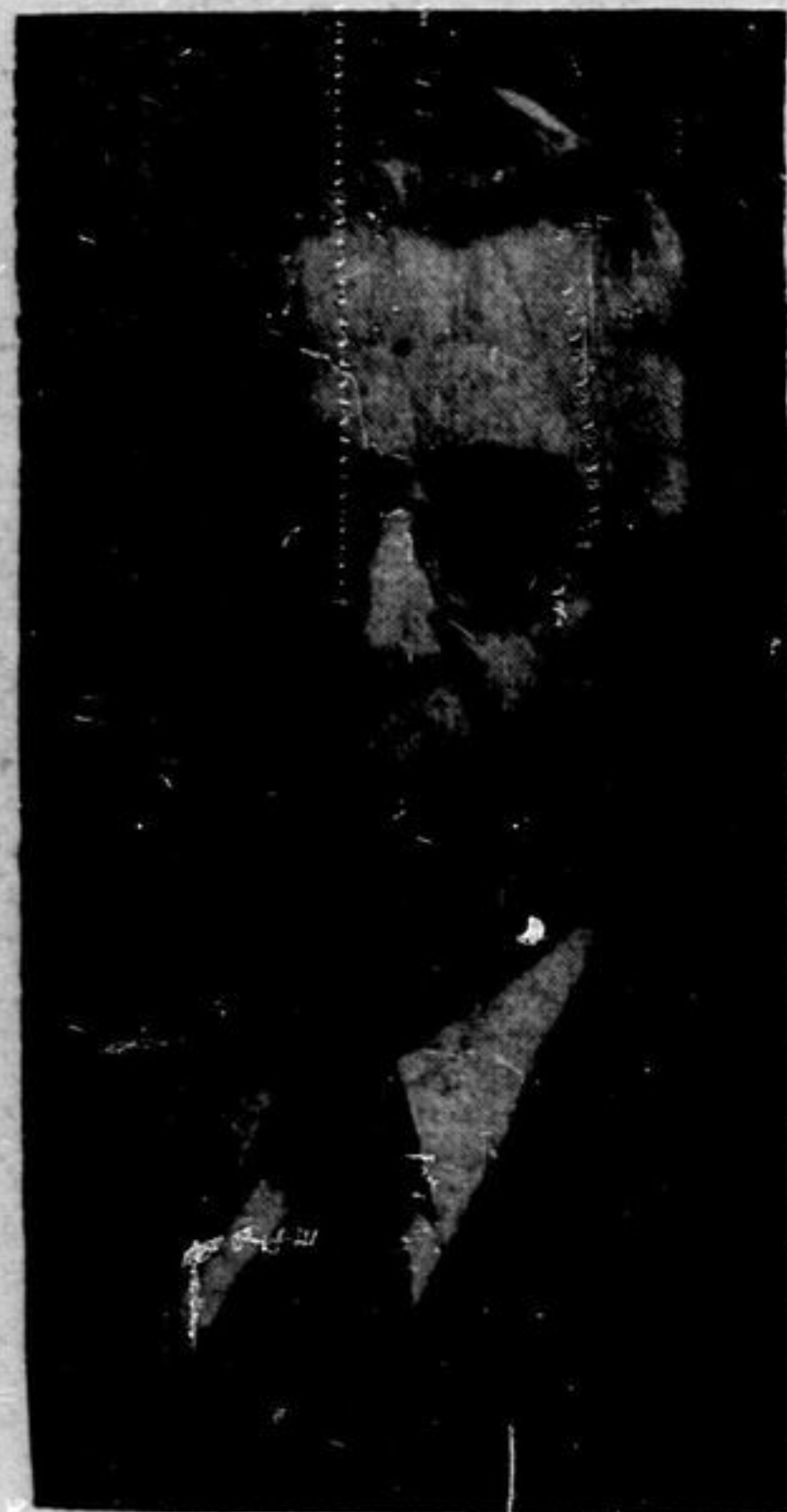
trap filled without attention on your part. Your plumbing supply dealer can show you several standard valves made for this purpose.

## Choose Wisely When You Select the Wallpaper

(By Mrs. R. J.)

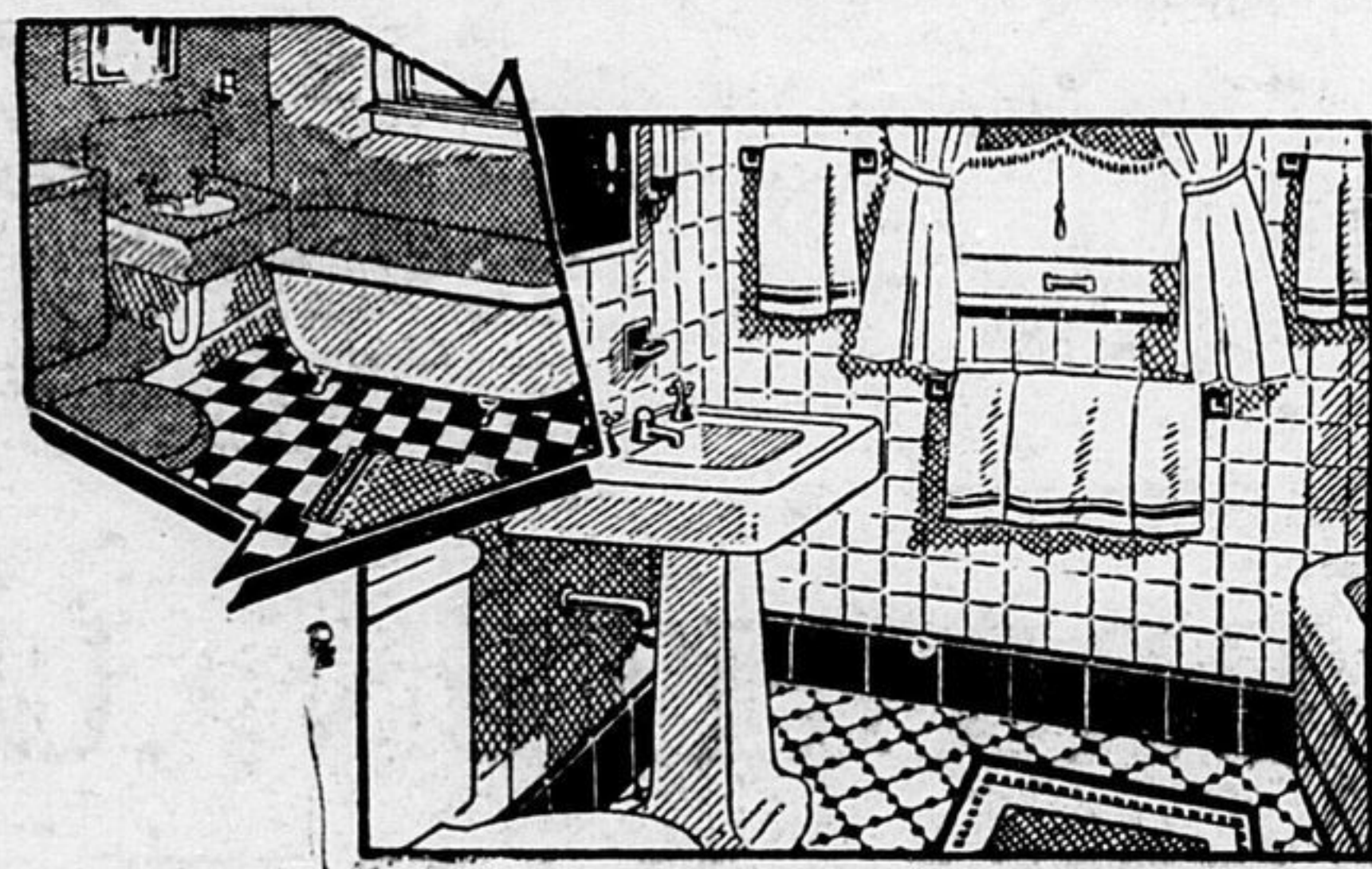
When you select wallpaper from the small sample do you know that you often misjudge the size of the pattern? The small piece makes the design seem much larger than it really is. On the wall a three or four-inch design sometimes loses all its strength and gives an effect of indistinct all-over pattern, instead of individual motifs. To avoid this difficulty in judging designs when you have decided upon the paper that you want, buy one single roll and take it home. Cut it into lengths and tack it with thumb tacks on the wall where it is to be hung. It is better to hang two or even three strips. Then sit down in the room some distance from the paper and you will really know what your new wall will look like. It won't cost you much, most of the roll will be saved for the paper-hanger's use, and it will eliminate all those disappointments you might have in your selection if you are not experienced in judging wallpaper patterns.

## BUILDER OF HOMES



D. MARTIN

This Timmins builder and contractor has built many fine residences in Timmins and district as well as being the contractor for stores, schools and other structures that are a credit to him and the town.



## A HOUSE IS AS GOOD AS ITS PLUMBING

Nothing else can add so much to the comfort of a home . . . but unless the plumbing equipment is well selected, nothing else can be as troublesome! McDonald's installations include the finest material, well built fixtures and dependable workmanship.

### GET AN ESTIMATE TO-DAY

We will gladly give you an estimate of the cost of work and new fixtures, arrange for financing and handle the complete job, without any trouble on your part.

# Louis McDonald

PLUMBING — HEATING

Opposite Imperial Bank

Golden Avenue

SOUTH PORCUPINE