

Best Anthracite Mined

"SILVER" COAL

DOMESTIC and BLOWER SIZES

Low in ash
Lasts Longer

ASK YOUR DEALER

New Constables Hired By Police Commission

Angus M. Grieve, Formerly of Guelph and John Atkinson, of Toronto Named to Fill Vacancies on Force. Both Men Over Six Feet Two Inches Tall and Well Recommended. Started Duty Wednesday.

Selected from a group of 24 applicants, Angus M. Grieve and John Atkinson were appointed constables on the Timmins police force at a special meeting of the Police Commission on Tuesday night. They will fill the positions left vacant by the retirement of Constables C. Culhane and Pat O'Gorman recently.

Grieve, who is a Canadian of Scotch descent, was born in Guelph, but has been a resident of Timmins for the past two years, employed at Moneta Porcupine mine. He is 30 years old, six feet, three inches in height and weighs 195 pounds. His application also stated that he holds the rank of lieutenant in the Wellington Rifles. He is married and is the father of two children.

It was not an easy task that confronted Magistrate Atkinson and Mayor Pardeman, as police commissioners, along with Chief Gagnon, to make a selection from those who had applied for the positions. Almost every man of the twenty-four who were paraded at the meeting, came well recommended. Finally narrowing the names down to a few it was unanimously decided that Grieve and Atkinson's applications be accepted. Both men commenced work yesterday but it will be a few days until they can be outfitted with uniforms.

Plane and Auto Alike Fail to Make Trip to Sudbury

(From Northern News)

Gold Belt hockey supporters who started for Sudbury by airplane and automobile got about as far toward their goal as the Lake Shore hockey team did toward its on Friday.

A General Airways' plane from Noranda, chartered by a party headed by Tom White of O'Hearns, had to turn back when it reached Temagami on a flight to Sudbury. Occupants of the craft said the flying weather was perfect when they left Kirkland and continued so over Cobalt and the Reserve. But low ceiling to the west stood between them and Sudbury so they circled back after reaching Temagami. The plane arrived back in Kirkland just before dark.

These in the party were Jimmy Burns, Ted Miron, Bill Howes, Arley Wright and Tom White.

Ray McCauley, who made the trip to Sudbury by car last year, attempted it again Friday but got no farther than the plane did. He was forced to turn back at Temagami as the snow plows have not opened the road any farther south this winter.

Pembroke Bulletin:—The Meaford Express in one of its bright front-page editorials cites the case of a Meaford resident being fined by a radio inspector for not having a license, though the machine had only been in the house about ten days. The householder, however, noticed the inspector pass a "stop" sign, laid a complaint, and the inspector was mulcted \$13.00 for the offence. What's the sauce for the goose is sauce for the gander.

PLEASANT HOMES

by Elizabeth MacRea Boykin

IS YOUR FIREPLACE OUT OF DATE IN AN OTHERWISE FASHION-RIGHT INTERIOR?

Styles in Mantels Change, Too—New Mesh Fire Screens Work Like Curtains—Ideas for Renovations.

A lady can be pretty superior about home and hearth during balmy days when she can choose as a background anything from an arbor on the lawn to a swing on the porch. But in mid-winter she definitely needs a fireplace to set her off becomingly.

Not just any fireplace, though. Because it takes more than a cheery blaze or a crackling log to create glamour. Just how much lure could you work up in front of those golden oak colonnades of not too long ago? Not to mention the colossal brick affairs of almost contemporary vintage. The pseudo-Adam and almost-colonial mantels are sometimes hard to handle too. And even the very pure period mantel is feeling the hand of modern simplicity or contemporary arrangement.

All because fashions in fireplaces change just as do fashions in furs or hats.

Modern Transformations

Briefly here are the new notes we've been digging up about mantels; in case you're due for a bit of remodeling!

The easiest, smartest transformations we've seen have been by the use of a wide rather severe molding. This will be the only detail of the fireplace, sometimes even dispensing with facing and mantel shelf. A plaster swag can break the wall space above. A portrait can be used, or a mirror, or nothing at all.

When the brick facing can't be eliminated entirely it is often painted. Or faced over with slate. Marble mantels, either the small dark French ones or the ornate white Victorian ones, are quite grand if you're lucky enough to know where to get one out of an old house. For the most part mantels right now are small, and renovations usually consist of making them smaller.

Plastering up all but the opening is often the first prescription.

And yet in the face of that, there are (for bigger and better houses) the very grand baroque mantels. Reaching to a high ceiling, mirrored and plastered to a fare-you-well, they yet manage to be terribly smart in their own rococo way. The Venetian baroque seems to be the inspiration for much that is being done about mantels, but with a very modern touch. The niceness are mirrored with plaster garlands and scrolls, but unpainted decoration on mirror is quite as effective. Most of these aren't for everyday use though!

Mirrors for Mantels

On the subject of mirror for mantels, first you'll find that snook mirror, the kind that makes you look just a little askew or wavy in spots, is the decorator's darling right now. Much more in style than regular perfect



What an idea is this—a cretanne motif used for the fire screen. The cretanne here repeats the design that is also used for window shades in the same room. Note the attractive mantel arrangement of greenery and the striped chairs that flank the mantel. The walls here are a cocoa brown accented with dark green and rust.

mirror. And there's a wide mirrored glass molding that is used in place of the usual paneled mirror for mantels quite a lot. If you're having a huge unframed mirror panel above the mantel, you may well have big glass rosettes like buttons down its sides for finish. Or you may have a painted mural or mirror for your mantel treatment if you have an artist friend.

As for the arrangement on the mantel shelf, we're seeing more of a trend toward a pair of imposing vases at either end to hold greenery or flowers, then a rather low detail in the center, or nothing at all and no picture. And the greenery in these vases will run toward rather spiky looking leaves. It's very wish to use five plaster or gilded brackets, symmetrically placed, on the wall above the fireplace to hold interesting figurines.

The Fire Opening

As for the fire opening proper, there's quite a lot going on. The mesh fire screen that hangs like a curtain to be drawn back and forth is about the

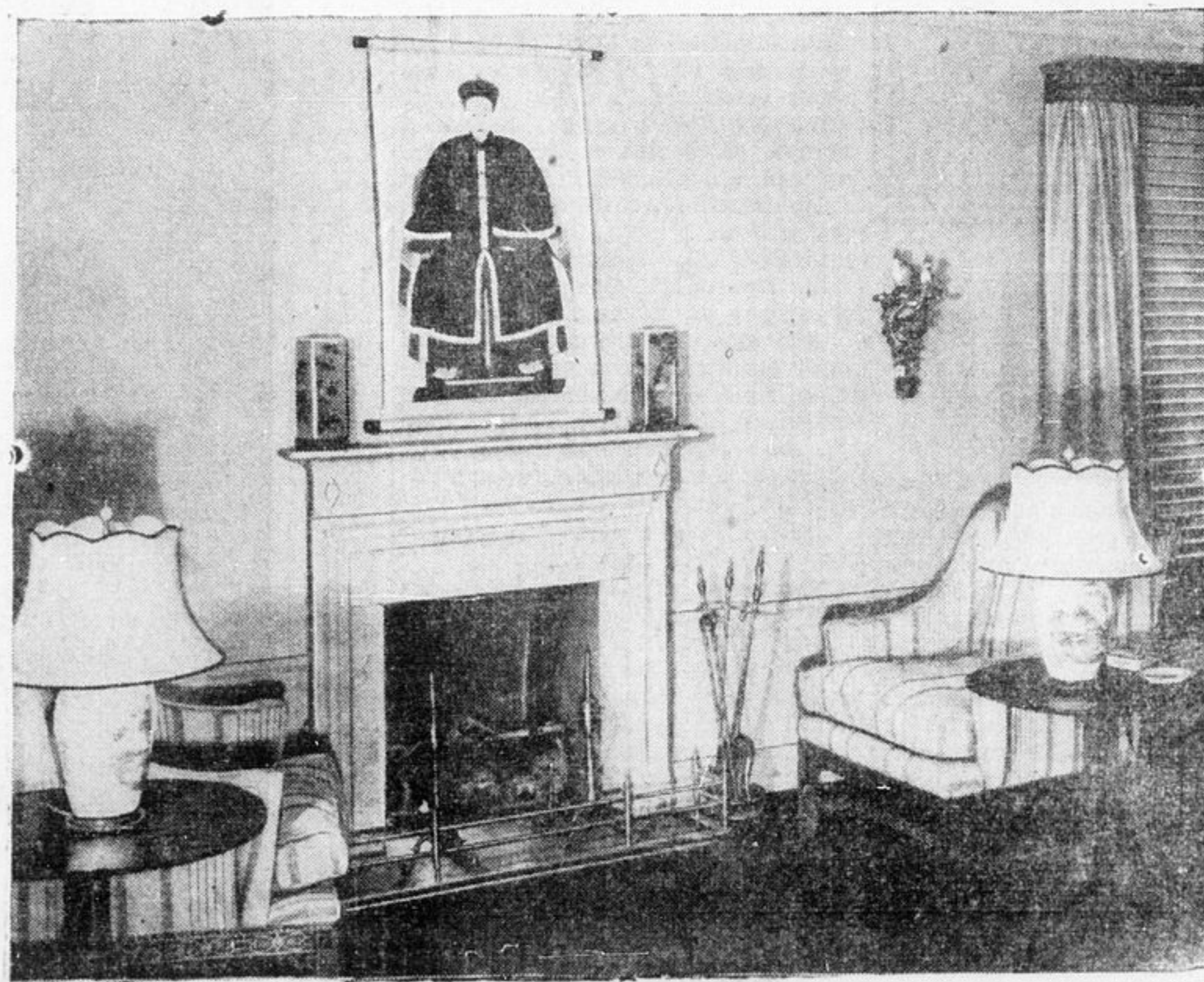
nicest innovation we've happened on in a long time. Maybe you already know about the plate glass fire screen that isn't harmed by the heat. And a frame with chintz or printed linen to match a detail or otherwise in the room is quite effective as a fire screen in the right place.

We've also seen a motif of the chintz or wallpaper cut out of ply board or cempo board in a large size and painted to repeat the motif. This works pleasantly in a fan shape, too.

It wouldn't be a bad idea to lock at your old fireplace objectively, because maybe it is the only thing really out of gear about your room.

Then again maybe you'd better beware... remembering the tale of the brass andirons! Just the same, as the wind howls woefully these winter nights, a fresh arrangement of the old mantel might give your whole room a new lease on life and you'll something to glow over.

(Copyright, 1938, by Elizabeth MacRea Boykin.)



In a pleasant 18th century room nothing is nicer than Chinese details for accessories. Here a Chinese ancestor picture is flanked by a pair of porcelaine jars of interesting shape. The walls in this room are very pale pink used with mulberry and soft green for contrast.

Another Pioneer of Cobalt Camp Passes

Edmond Dechesne Died in Cobalt Hospital.

Halleybury, March 17.—(Special to The Advance)—Former resident of Timmins who lost members of his family in the Matheson fires of 1916, Edmond Dechesne, who died suddenly in Cobalt Municipal hospital on Saturday morning, was buried from Holy Cross Cathedral here on Monday, with many of his fellow-employees of the Northern Ontario Power Company attending the services. Rev. Father Lasalle celebrated Requiem Mass and burial was made in the Roman Catholic cemetery here.

Mr. Dechesne, employed by the power company at the Mataibihouan plant, had been in hospital about two weeks after he had been brought out to Cobalt to undergo an operation for gallstones. He had appeared to be recov-

ering but at the breakfast hour last Saturday he was stricken with heart trouble and died within a few minutes. He was 59 years of age and a native of Maniwaki, P.Q.

For many years, Mr. Dechesne had made his home in Northern Ontario, and he had been with the power company for nine years at their plant near the mouth of the Montreal River. Prior to that time, he had been for a period in the service of John Knox, general manager of the Hollinger Mine in Porcupine, and earlier still had resided in the Matheson district. It was while there that his first wife, their four children and his sister were burned to death in the disaster of nearly 22 years ago.

Mr. Dechesne is survived by his widow, the former Anne Fournier, and by one sister, Mrs. H. Lafleur, of Hull, P.Q. Mrs. Lafleur came north to attend the funeral, at which also were present a brother of the widow, Omer Fournier, of Fabre, and her sister, Mrs. Alvide Pichette, of Timmins, who was accompanied by her son. Six friends from

Montreal River flew to Halleybury to pay last respects, the road being blocked by snow. Previously, Mrs. Dechesne had been brought to town on Saturday by airplane after her husband died, and when Mr. Dechesne was taken ill he was flown to Cobalt, the plane then landing on Sasagaga lake, within a mile of the hospital.

Central Canadian:—Now that Hon. R. B. Bennett's resignation as Conservative leader has been announced his true worth and ability will come in for a more just appreciation, particularly from among those who have been his most outspoken critics. Isn't it strange how political partisanship can blind some people to their neighbour's virtues?

Collingwood Enterprise-Bulletin:—Magistrate R. J. Browne, of Toronto in an address on juvenile crime, expressed the opinion that the old slogan "God Bless Our Home" has been taken down and in its place "Let Her Rip." This is a sad commentary on home life, such as should sink in with parents.

PROTECTION

against loss by FIRE. Enquire about our new low rates for FIRE INSURANCE. Sickness, Accident, Automobile and Life Insurance Mortgages Arranged

SULLIVAN & NEWTON

21 Pine Street N. Timmins Phone 104

Discuss Rebuilding Cobalt Masonic Hall

No Decision Reached Yet in the Matter.

Cobalt, March 17.—(Special to The Advance)—While C. A. Byam, insurance adjuster, has visited the premises and conferred with lodge officials regarding their loss, and while informal discussions have taken place among the members of the lodges themselves concerning the future, no definite decision has been reached with regard to replacing the Masonic premises here lost when the hall, with most of its contents, was destroyed by fire last Thursday morning.

Master T. H. Wainwright, Master of Silver Lodge, A.F. & A.M., which owned the building, said this week that the board of general purposes of the lodge had met, but had reached no decision with regard to the future. He added that it was unlikely any steps would be taken for two months yet, although it was understood that brethren of this lodge, and also of Shuniah Chapter, Eastern Star, and Cobalt Chapter, Royal Arch Masons, who also used the property, would meet in general session to consider the problem.

Meantime, the Cobalt Oddfellows have offered their hall for the use of the homeless Masons, and another invitation has been received from Halleybury Masons, who found shelter here

when their premises were lost in the disaster of October 4, 1922. Neither of these offers has yet been accepted, the mayor said, but there is no immediate haste, he declared, since the next meetings of all lodges would not be held until early in April.

Brampton Conservator:—A Conservative organization in Toronto refused to allow the ladies the same representation as men in the nominating conventions. There are more women than men voters. Why the distinction? The dear ladies promise to rebel and form another body, and nominate candidates of their own. Then what?

To GROW THE BEST SOW THE BEST

STEELE BRIGGS SEEDS

Sold by leading merchants

PAY WEEK SPECIALS

Values Effective

THURSDAY, FRIDAY, SATUR. MAR. 17—18—19

- FIVE ROSES FLOUR, 24 lb. bag\$1.10
- CHIPSO, 5 lb. box37c
- PEARS (Standard), 3 tins27c
- OLD HICKORY SODA, box25c
- PEAS, No. 4, 2 squat, 3 tins25c
- MONARCH FLOUR, 7 lb. bag31c
- CLARKE'S KETCHUP, bottle16c
- Crown Brand CORN SYRUP, 5 lb. pail39c
- 1 Large RINSO, 1 bar LIFEBOUY26c
- DOROTHY MILK, 3 tins25c
- 1 Large OXYDOL and 1 Small26c
- MOTHER PARKER TEA, per lb.61c
- SWEET PICKLES, 26 oz. jar23c
- WHITE CORN (Sweet), 3 tins27c
- TOMATO JUICE, Small, 6 tins27c
- PRUNES (60—70) 2 lbs.19c
- SUGAR, 10 lbs.61c
- CALAY SOAP, 5 bars.23c

- MEATS**
- SHANKLESS PICNIC HAMS (by the piece), per lb.21c
 - CHOICE ROAST BEEF, lb.16c
 - CHOICE ROLL VEAL, lb.16c
 - HAMBURG STEAK, 2 lbs.25c

EMPIRE MEAT MARKET

25 Kimberley Ave. Phones 298—169

Bargain Coach Excursion

FROM T. & N. O. and N. C. R. REGULAR STATIONS TO

Pembroke, Renfrew, Arnprior, Ottawa, Montreal, Quebec and Ste. Anne de Beaupre, Que.

via North Bay and Canadian Pacific Railway

THURS., MARCH 17th 1938

Bargain excursion tickets will be valid on Trains 2 and 46 and their connections, Thursday, March 17th. Passengers who use our Train 2 will connect at North Bay with C. P. Train 2, leaving 8.20 p.m. same date. Passengers who use Train 46 will arrange their own transfer to North Bay C. P. Depot and take C. P. Train 8, leaving at 1.00 a.m., Friday, March 18th.

Tickets are valid to return, leaving destination point not later than C.P. Train 1 from Windsor Street Station, Montreal, 10:15 pm Sunday, March 20th and connecting at North Bay with our Train 1 at 12:45 p.m. Monday, March 21st—EXCEPT passengers from Iroquois Falls and points north of Porquis MUST leave not later than CP Train 7 from Montreal, 7:50 p.m. Sunday, March 20th, to connect at North Bay with our Train 47, Monday, March 21st.

Tickets will not be honored on Trains 49 and 50 "The Northland." Tickets destined Quebec and Ste. Anne de Beaupre not good on Semi-Streamlined Trains 350 and 352 to Quebec and 349 and 351 from Quebec, but good on all other trains between Montreal and Quebec.

Tickets Good in Coaches Only. No Baggage Checked Children 5 years of age, and under 12, when accompanied by guardian HALF FARE

For fares and further particulars apply to Local Agent Temiskaming and Northern Ontario Railway The Nipissing Central Railway Company

Order Your Coal Now from Foggs'



Western Canada Coal — Alexo and Canmore Briquettes

- Welsh and American Anthracite
- Red River Smokless — Newcastle
- Red Jacket—Egg and Stoker Sizes
- Russian large household size

John W. Fogg Limited

Lumber, Cement, Building Materials, Coal and Coke, Mine and Mill Supplies

Yard Schumacher Phone 725 Head Office and Yard Timmins Phone 117 Branch Office Kirkland Lake Phone 393