

5TH

THE Consumers Co-operative Society LIMITED

AUG. 16TH

Anniversary CELEBRATION

Band Contest

To encourage public interest in Band Music the Consumers Co-operative Society has arranged a COMPETITION for the Bands of the District. —A cup has been donated by the Society to be competed for annually. Final possession of the prize goes to the Band winning 3 times. Entrants already include the:

- TIMMINS CITIZENS' BAND
- TISDALE BAND
- COCHRANE BAND

SEE THE GRAND PRIZE displayed in the Consumers Store Window, corner Fourth and Birch North

GALA DAY and PICNIC

The Consumers Co-operative Society, Ltd., invites all the consumers of the District to join in celebrating its FIFTH ANNIVERSARY. The day is August 16th, a GALA DAY OF FESTIVITY at the

Idle Hour Park, Mattagami River
(Road via Wende Ave and Dalton's Field)

Free Bus Service from Consumers Stores 9.30 A.M. and 1. P.M.
Secure your Bus Tickets from the Stores

Grand Concert

Riverside Pavilion Aug. 16th, 8p.m.
Programme includes varied Musical, Vocal Numbers
Porcupine District Pipe Band
Porcupine Welsh Miners' Choir
and other interesting numbers

Concert at So. Porcupine Arena, August 18th,—8.00 p.m.

Band and Instrumental Music
Guest Speakers include:—
Mr. W. C. Good, president Co-operative Union of Canada.

See Thursday's Issue for particular information re: Celebration

Sports - Games - Races - Tug-of-War - Refreshments. Admission FREE to Everybody

Brookfield Butter lb. 26c



SHORTENING
A pure vegetable product made by the makers of Crisco.
2 lbs. 27c

- Apex Strawberry Jam Absolutely pure 39c
- COUNTRY CLUB, Choice 32 oz. jar
- CHERRIES 2's Squat Tin 27c
- PLUMS, LOMBARD, TIP-TOP 2 tins 23c
- PEACHES, COUNTRY CLUB Choice Tin 16c

Don't take chances on Cheap Canned Goods of Inferior Quality.—We Sell the Best!

A PAGE for Thrifty SHOPPERS

Co-op Coffee

Guaranteed Co-op quality. Flavour preserved in vacuum jar.



lb. 41c

- LIPTON'S TEA RED LABEL lb. 54c
- FRY'S COCOA - - - 1/2 lb. tin 20c
- BAKING POWDER MAGIC 1 lb. tin 28c
- Premium CHOCOLATE BAKER'S 1/2's 23c
- Hires ROOT BEER - - - - - 31c

- TRY THIS For an easy lunch
- Picnic Brand Pink Salmon**
No. 1 size, 2 tins 25c
- AYLMER—No. 2 Squat Tins
 - Tomatoes - - - 2tins 17c
 - QUALITY BRAND
 - Peas, No. 4 tins 2 tins 19c
 - SUGAR CRISP
 - Cornflakes - - 2 pkgs. 15c
 - POST
 - Bran Flakes - - pkg. 12c
 - Prunes, med size - lb. 20c
 - SEEDLESS
 - Raisins - - - - 2 lbs. 25c
 - BOWES' Pure Ground BLACK AND WHITE
 - Pepper - - - 1/4 lb. tin 11c
 - ROBINHOOD
 - China Oats - - - pkg. 31c

- CANDIES**
- Old English Mints lb 17c
 - SCOTTISH CO-OPERATIVE
 - All Sorts - - - -lb. 27c
 - LIBBY'S—23 oz. size Tin
 - Pork and Beans - - - 9c
 - HEREFORD—CORNER
 - Beef - - - - 2 tins 27c
 - Chipso, large pkg. 21c
 - P. & G. Soap 10 bars 34c
 - Comfort Lye 2 tins 19c
 - Sani-Flush - - tin 21c
 - MENNEN'S LATHER—Large
 - Shave Cream LARGE TUBE 42c

ON SALE NOW!

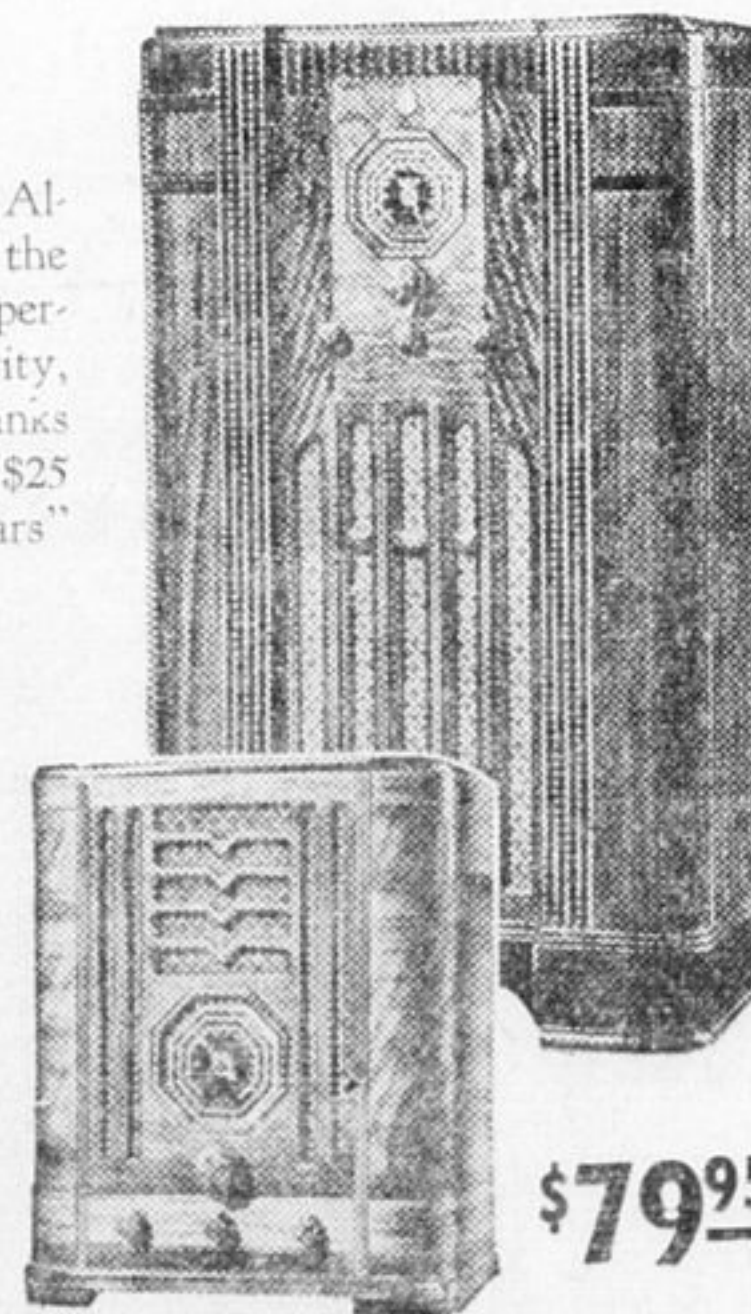
Brand-New, 1937 6-Tube Models
Performance equal to previous models at \$120 to \$130!

DE FOREST CROSLLEY RADIO

See this amazing new set! Although it has 6 tubes, it gives the equal of 8-tube World-Wide performance. In sensitivity, selectivity, tonal power and quality it ranks with previous radios selling at \$25 to \$50 more. The new "Mars" De Forest Crosley model—

\$99⁹⁵

The greatest radio values in our history! Same chassis available in the De Forest Crosley "Electra" mantel model, also with METAL Spray tubes.



\$79⁹⁵

EASY TERMS

IT'S CANNING SEASON NOW!

- Fruit Jars, small - doz. \$1.14
- Fruit Jars, large - doz. \$1.29
- Certo - - - - - bottle 26c
- Corn Syrup EDWARDSBURG 2 lb. tin 18c
- Macaroni, De Luxe, 2 pkgs17c
- Minute Tapioca, pkg.12c
- Junket Ice Cream Mix, 2 pkgs.....17c
- Eno's Fruit Salts, household size.....79c



MEAT SPECIALS FOR THE WEEK

- Legs of Lamb - - lb. 29c
- Round Steak - - - lb. 22c
- Sirloin Steak - - lb. 25c
- T-Bone Steak - - -lb. 27c
- Loin Veal Chops - lb. 27c
- SHOULDER Roast Beef - - - - - 15c
- Bacon - - CELLO WRAPPED 1/2 lb. package 17c
- Smoked Picnics Shankless per lb. 23c
- SCHNEIDER'S Midget Rolls - - - - - 29c

We Handle only GOVERNMENT GRADED QUALITY MEAT

THESE SPECIALS LAST THE WHOLE WEEK!

5 Years of Successful Co-operation

CONSUMERS CO-OPERATIVE SOCIETY LIMITED
TIMMINS PHONE 234 SOUTH PORCUPINE PHONE 101

The Co-operative Method is the Best!