



## There is STYLE in Glasses

And style in Optical Wear is as much a matter of good taste as style in wearing apparel. Let us assist you in selecting glasses that will enhance rather than detract from your appearance.

Of paramount importance, is the careful examination of your eyes. Irvin Rosner, eyesight specialist, using the most modern instruments is fully qualified to prescribe glasses that will not only look well but give you better, more comfortable vision. Call in to-day or if more convenient phone 212 for an evening appointment.

IRVIN ROSNER,  
R.O.  
Eyesight Specialist

## Halperin Optical Parlour

Located in Halperin's Jewellery Store

7 PINE STREET NORTH

PHONE 212

### Pleats Are Smart



Sketched in New York a short time ago, this spring suit is the newest version of what have been called "Clark Gable" suits. The four pleats in the back lend distinction as well as comfort. Note the "pill box" hat.

### Style in Eyeglass Wear at Halperin Optical Parlour

There's style in eyeglass wear, too. To-day it's a long call back to the heavy square set spectacles that some how changed people's appearance so much. The newest fashions in eyeglasses are made to fit the face—to be as inconspicuous as possible. They may be seen at the Halperin Optical Parlour.

### PLAYFUL PRINTS APPEAR IN THE LATEST FASHIONS

Collections of prints styled for summer make an important fashion point of white grounds. The favoured white grounds range from pure or "dead" white to soft creamy and ecru tints. The creamy tints are associated particularly with silk and are considered to be especially good for multicoloured patternings in Chinese colourings, and for sports gresses to blend with white woollens as in costumes with white wool tepecots. Very heavy crinkled white rayon crepes with small or large printed designs are cited as good for evening wear. An interesting feature of the emphasis on white grounds for summer prints is that it is noted in all materials, including crisp sheers and chiffons, taffetas and lustrous satins as well as in crepes, dull heavy sheers and wash rayons.

Hand-painted leather buttons, decorated with illustrated verses from Baudelaire's famous "Invitation au Voyage," trim a novel hand-knit travel costume, by Kostia de Var. "Il Etait un Petit Navire" enlivens the buttons of red and gray hand-knitted linen beach overalls.

Many plain suede afternoon gloves are of linen; they match the petticoat, lining or trimming of the frock.

### MATCHING MODES

The spring handbag collections are completed, and there pervades in the styles selected the same tendency that carries through in costumes, namely, the tailored or mannish and the feminine, which is evidenced by dress-maker details in the treatment of the leathers.

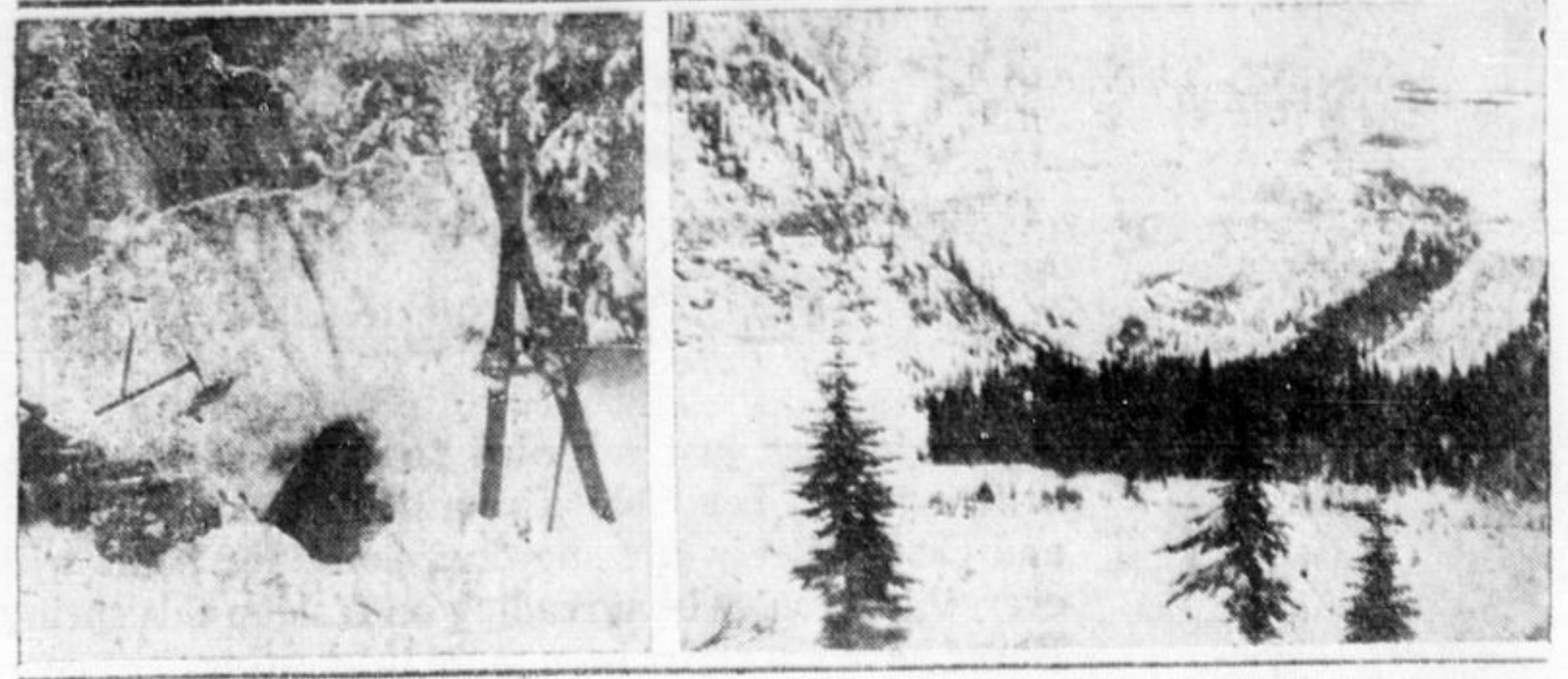
It is generally believed according to Europe, that the fashion trend in handbags is getting away from the large, bulky, broad shouldered type which has been in vogue for so long. In a season when the tailored suit is of paramount importance, the tailored bag must be equally so. There are any number of models created with the mannish suit in mind, which subscribe to the simple characteristics considered a correct link-up with the tailleur, yet are smaller, without losing the necessary capacity requirements.

### LACE PREVAILS

Besides sheers, meaning chiffons, and sheer crepes, spring fashions also recommend for afternoon and cocktail wear lace jacket ensembles the dress having an important quality and the jacket belted and slim.

Interest is also shown, in the redingote. The actual redingote that introduces a printed frock with crepe or lightweight woolen coat, also the redingote dress that combines a print with a plain medium will be received favourably this season.

### GRIZZLY GULCH SCENE OF NEW GOLD RUSH



Grizzly Gulch promises to be a new Eldorado as prospectors prepare to pack into the region which lies in the Flathead region of B.C., just across the border from Wall Lake in Waterton National Park, Alberta. For a year prospectors have been operating in the region, and while solid veins of quartz have not been found, some good-looking samples of gold-bearing quartz have recently been brought from the Gulch. Assays are reported reassuring. Eighty or more claims have been staked and filed at the mines ranch office in Cranbrook B.C. There is a good trail from Waterton to Wall Lake and a fair pack trail over the divide and in to the Flathead. However, the new-fangled operator who travels by aeroplane will be out of luck, for it is reported there are no landing places in Grizzly Gulch, shown ABOVE, RIGHT. AT LEFT is prospector's claim.

### SHOE VOGUE

A shoe which is said to be meeting with a great deal of approval, is a sunshine fashion shoe, with square toe and heel, a one-eyelet tie, in chamouis suede with pig trim or white suede with

calf trim. The front and back parts are separated by a wide open stretch, held together with the band trim that extends from front to back. This makes the shoe a conservative "closed" type, yet places it in the air conditioned, ventilated class.

### BLACK LEADS

Black is favoured over all colours for spring footwear, it is said, with navy and rust close behind. Although a quantity of pastel patent has been sold for southern wear, this may be considered a passing whim of Dame Fashion.

## Hats Noteworthy for Variety This Season

Different Types of Hats to go with Different Kinds of Suits and Dresses. Hombergs, Derbys, Bowlers, Toques, Tailors, Bretons. And Don't Forget the Veils.

"Anything goes," this spring, as far as hats are concerned. You don't have to look far for the reason for the large variety of silhouettes featured in the millinery market now. The garments that will be worn by women this spring are so varied as to require a wide range of hat styles. Mannish suits, tailored coats, dressy coats, swaggers and softly tailored garments require different types of hats. Therefore we find hats for the new mannish modes—hombergs in felt mostly, though some are shown in straw. And for those who are serious about their mannish costumes there is the feminine version of the derby. The "bowler" is sponsored by Schiaparelli, no less. Some of the less severely masculine type hats include veils (very important this season). Sometimes the veil is tied by a bow in the back of the hat, and even derbies are not infrequently feminized with veils.

In contrast to the masculine trend there is a decided vogue for flower-trimmed hats. Little toques perched dramatically on the side of the head, trimmed with a mass of flowers in front accentuates the new forward movement. A spray of flowers on a tilted hat plus a veil is a sure favourite this season.

### Chinese Influence Fades

The Chinese influence which appeared to dominate the first showings is still prominent though by no means as important as this trend was a short time ago. The popular interpretations of this influence are seen in numerous mandarin toques and coolie hats. Considerably less important is the Flemish influence which manifests itself mainly in a small brimless cone, veil covered.

Sailors and Bretons, mostly in felts, are being widely featured and selling well. The pillbox is still presented though with considerable less frequency than was the case last season.

A wide range of straws are being featured this season, indicative of the extensive latitude which stylists are enjoying is the large list of fabrics employed. These include various felts and straws, of course—taffetas, paper panama, ballbunt, ribbon, silk and many novelty fabrics.

Among the unusual hats that are being presented now is a tiny toque with a large chiffon flower in front like a headlight. Flowers and veils are often utilized in many stunning effects. Large sprays of violets or other flowers covering almost the entire hat are particularly effective. Veils cover the hat or part or all of the face or may be given novel treatment by a bow tied in front or at the back.

## Friedman's Fashion Review on Thursday

Event at Palace Theatre Should Interest All in the District.

A parade of mannequins in the fashion show at the Palace theatre on Thursday, March 26th, will give Timmings women a preview of the spring dress picture. Presented by Friedman's department stores, the show will commence at 8:30 o'clock between the regular performance of the evening's fa-

ture picture. No extra charge is being made for the fashion parade.

Friedman's have brought in a large number of exclusive designs for presentation at the show and a large number of mannequins have been engaged to show the gowns and coats.

Children who have been spending this trying weather abed with colds can be cheered up a little with Shetland wool bed jackets, made in sizes 4 to 12. These come in white, pink or blue. They are bound with matching silk, and tie with narrow satin ribbon. They are light in weight, but warm enough to give protection from draughts.

### SCRAMBLE SUITS GIVE CHANCE FOR PERSONAL TOUCH



The illustrations above are just suggestions as to how the fashionable woman of 1936 may pick and choose her own suit. Blouse, jacket, and skirt—there's an infinite variety of all in Timmings shops. The recipes for Scramble Suits obey only a woman's taste. Jackets are definitely more mannish this year and the blouses are likely as not to have come from a man's shirt manufacturer.

A PREVIEW of the  
**SPRING**  
Picture

The time is Spring! The place is the Palace Theatre. The leading lady is YOU! The setting is perfect for all the drama and romance of the new fashions. You will find more thrills and excitement in this new collection than in any play in the theatre! Even though you may not be ready to buy just yet, please come and see the new things... see how really beautiful fashions can be.

You are Cordially Invited  
to attend our  
**SPRING FASHION SHOW**  
at the new  
**Palace Theatre**  
Thursday Evening, March 26th  
at 8.30 o'clock

Following immediately after the first performance of "Next Time We Love" the fashion show will be presented. The new spring apparel will be displayed by mannequins to the accompaniment of a ten-piece orchestra. Special entertainment will be an added feature. Apart from the regular theatre admission price there is no charge for this attraction.

**Friedman's**  
DEPARTMENT STORES LIMITED