

# Must be Well-Groomed to be Fashionable To-day

Shoulders Straight, Distinct Lines, Everything Neat and Trim. Some of the New Models Described. Vogue for Suits and Tailored Garments Pronounced.

(By Virginia Pope)

If it were possible to label the well-dressed woman of early spring it would bear the device, "well-groomed." She will have the well-groomed look because she will be turned out on tailored lines, all the details of her costume playing up to them.

The trim tailor-made mode performs stress on the T silhouette, it keeps the shoulders straight (not sloping) and it whittles the body lines down to their narrowest possible proportions. The square look—it must be just masculine enough to mark the tailored appearance without exaggerating it—is illustrated in a black three-piece ensemble. The jacket is double-breasted and dressed up with a sleek satin binding that edges collar and revers. The short swinging coat with its raglan sleeves is very sporting. In this ensemble the designer used two monotone fabrics of different weaves, the one for the suit in a chevron, the one for the coat in a plaid, thus contributing greatly to the smartness of the ensemble.

**Young and Slim**

Young slim things love, above all, the sleek square-shoulder effect. For them there is the long close-fitting coat with shoulders built practically at right angles. The tops of the sleeves are carried up to the neck in box pleats, parallel folds on the sleeves give them a jaunty fullness. The little rounded collar (it is cut up at the back and finished with rounded corners) and the buttons carried close to the throat contribute charm. The girl who wants something for immediate wear should consider obtaining it in dark blue or black; but for warmer days she'll adore having it in those light shades that are associated with some English tweeds.

There is something immensely smart about the coat that buttons from the base of the revers straight to the hem. It has the dashing appearance of a uniform, and gives one assurance that no matter how hard the wind may blow one would stay put. Should one wear

the coat over a print dress, it would be a touch of gaiety to leave the bottom button undone, suggesting the new redingote dress.

One of the most exciting things in the spring outfits is the tie-up between blouse and suit. Lapels are faced and jackets lined with the material of the blouse. This gives the tailored tweed an accentuated colour value plus an air of brightness. Is blue your favorite shade? Then you may get a mixed trend in which blue predominates, and carry out the blue as aforesaid in blouse and revers. The colour scheme can be further enlarged upon by topping the outfit with a hat of the same blue.

**Many Uses**

The vogue for suits started very early, almost as soon as 1936 was ushered in. Many women bought a tailor-made to wear under their fur coats in town, one that they can use under a top-coat when heavy furs are no longer necessary, and which will be a perfect trotteur when April comes. A suit that will completely answer all of these calls is of a new fabric, a knitted nerringbone cashmere. Though it is as soft as a kitten's fur, it "walks" perfectly. It comes in enticing shades of pinkish-red and French blue; the model shown is in natural tint. The blouse is rust silk crepe printed with white polka dots.

### Try Remus for Handbags to Match the New Clothes

New clothes mean new accessories and for the 1936 Easter parade, only the latest designs in handbags will really suit the clothes. C. A. Remus, Pine street jeweller, has recently placed on display a large selection of imported leather handbags in all the choicest colours and contours for the new season.

Taffeta umbrellas in a small shepherd's plaid are chic and practical for rain or shine. These are significant of the present parasol vogue.

## Shragge's Showing Modish Creations

Style Service has Built up a Notable Clientele Here.

Through arrangements with manufacturers, Shragge's have for many years given the women of Timmins as good an opportunity to select the latest dress creations as the women in metropolitan centres have. On this style service the shop has built a steady, appreciative custom in the town. This spring is no exception with Shragge's and in line with their policy, they show a wide and varied selection of the 1936 mode.

By keeping in close touch with the larger fashion centres of Canada, and by making frequent trips to the south, Mrs. Shragge knows the trend of modern dress and in having the confidence of Timmins women, her selection always receive wide attention here.

### Rare Food Ornaments are Among the Latest Fashions

Rare woods that are cut into initial pins and fobs, bracelets, belt buckles and buttons come from all corners of the earth. Purple heart, a wood with a lavender cast, and clear yellow satinwood are from the jungles of Brazil. Africa yields ebony and a tan and brown striped wood known as zebra-wood. East Indian vermillion is a rich, reddish brown wood. These woods and many others are kept in their natural colourings. Favourable symbols of one's microscope may be cut from them. They are worn with lightweight sweats and tweeds. The buckle of an interesting belt is made of two concentric circles of contrasting wood; the smaller circle may be East Indian vermillion, the larger pale gray English harewood. Through these circles, in self-locking arrangement, the ends of a suede belt in any desired colour are drawn. A bracelet is made to match.

Four-button spats, cut to fit the feminine ankle, lend a note of spruce dressiness to tailored costumes. They are to be worn with opera pumps and one's new spring suit. Heavy white linen ones go with black patent leather pumps. The spats also come in navy, brown or pearl gray gabardine. The top of the spat comes just above the ankle bone, a very flattering height.

### Smart Tailored Suit



With three patch pockets, belted back and a sturdy mannish appearance, this short jacket will be another popular part of the 1936 spring ensembles. The checked scarf adds another masculine touch.

### Lovely Fabrics for the Larger Woman

"Stylish Stouts" Shown How to Dress So as to Minimize Size.

(By Gabrielle St. Amour)

So many grumblings from the vicinity of those who suffer from avoirdupois have reached my ears of late with regard to my shortcomings as a fashion writer that I have taken it to heart and am dedicating this article to the women designated by stylists as "stylish stouts." To be numbered among the stouts is no crime, I'll have you know, because with proper attention paid to the details that count, a very pleasing tout ensemble may be achieved. We women of every age, size and shape like to be presentable and we all like the odd touch of flattery. It should not be otherwise.

**Hope Springs Eternal**

I shall now present a picture that will put the stylish stouts in the category of the graceful, with good lines and distinguishing features commanding attention. The massive woman may be larger than her sister, but good things are not always wrapped up in small packages, and the bigger, more mature figure comprises assets that are unknown to the petite type. There is a dignity, a certain steady poise and presence that is lacking in small women.

In order to guide stylish stouts from tumbling headlong into the pitfalls of bad taste and awkwardness with regard to dress, I shall endeavour to place before them a sort of guiding rule, or rules, which will when applied, smooth away any wrinkle from the tired face and bring instead, sunny smiles and purrs of pleasure. It is in knowing what to avoid and what to accentuate that wins.

To begin with, if a belt is to be worn, do not plaster a large buckle in the middle of your anatomy. This draws attention to the waistline thickness, and is as a target to the eye. Likewise, flowers. A buckle worn at the neck is different, it often helps out. If you fancy the corsage bouquet, let it fill in the gap at the opening of the neck, at the bust line.

**A Mistaken Idea**

Some women are under the impression that to squeeze their extra poundage into a smaller circumference than is legitimately permitted by nature, is to present to the world a more slender silhouette. Of all the mistaken ideas, this is the most foolish. In order to appear more sylph-like the secret lies in more trimly fitting and more comfortable garments. This prevents the fat from being pushed hither and yon and gives an outline more symmetrical.

Other items to avoid are the big cuffs which add to the appearance of breadth and the contrast of colour and fabric. Contrasts are a menace to those who carry with them more poundage than is permitted when referring to the sylph. Tight armholes are a hazard that mar the surface dangerously. Avoid shirtings in the shoulders as you would the plague, if you are listed among the congregation of the obese.

**A Friendly Spirit**

Now girls, I hope I have not offended you by calling you various unpleasant names, but I only indulged in those disagreeable phrases to bring the truth home to you. As I have said, the stout woman has her many advantages over the smaller types, and she may not look slim, but she may look very beautiful. There is a something comfortable in the presence of a large woman.

Materials should bear no great round spots, or conventional patterns, and the neutral tones are the colours set aside for women who are prone to tip the scales heavily. For spring, powder blue and navy blue, black, brown, taupe, and shades of grey are all delightfully presented in the newest fabrics and no woman has been forgotten.

**Flattering Details of Import**

Necklines present another problem, and usually the V neck offers more chic and flattery for the larger woman. Belts may be softly draped and help to camouflage the appearance of thickness that may prevail, while the surplus blouse is something that must be considered because it is one of the secrets of success for the beautifying of our more mature figures.

Perhaps this will clear up a few of the problems of the stylish stouts. I trust that they will not hold it against me this year, and grumble about being left out of the picture and pushed back on the shelves of the "has-beens."

### Novel Swim Suit Will Allow wearer to Float

Is Equipped with Rubber Sac Inflatable at Will.

A novel bathing suit which enables the wearer to float in the water and is especially advantageous for the person who cannot swim is a new feature from Europe.

The suit is equipped with an invisible rubber sack inserted in the front of the bodice, which is inflated by means of a little rubber tube concealed inside the suit. The tube, of course, is filled with air only when required. Lastex suits have been made with this new device, and the garment launched under the name "trout suits."

### SHIRLEY TEMPLE INFLUENCE

The Shirley Temple dress continues to hold the lead in styles and is very popular with children themselves. These are fashioned of prints, light and dark colourings, and offer a variety in choice of styles and materials.

For early spring, a number of combinations of lightweight wool and silk combination suits are being shown with the coat tailored as carefully as that of the groupings, with inset pockets, raglan sleeves and other exciting details.

### SUMMER SHOE STYLES

There is felt to be a place for the all-white buck or linen shoe in the summer picture. Two pastel colours which are expected to rank up well in summer selling for slightly dressier wear, particularly in linen afternoon sandals, are pink and maize.

### VOGISH FANCIES

Waistcoats, jackets, bar frills and Margot ruches form the diversified interests in many of the collections of spring neckwear. Separate dinner jackets to vary the dinner suit, which is getting into the volume class, has led to the creation of a large group of such jackets, often in white, plain or novelty pique, varying from little tuxedo-like loose-swinging revers collar types to waistline fitted, shoulder-broadened versions definitely in the Gibson Girl classification. The bellhop and mess jacket types are, of course, well featured.

### FANCIFUL COLOURS

Among the plain colours shown this season are: dusty pink, carrot, chardon, turquoise, powder blue, petal pink, maize, chamois, sea foam green, lilac and deeper purple as well as navy, brown and a little black. Off-white and white are included also.

### The "Baby Swagger"



They call this little suit the "Baby Swagger." Very short and very chic, it is to attract much attention in the Easter parade, the stylists say. The Chinese influence gives it an exclusive touch.

# BE BEAUTIFUL

By ELSIE PIERCE  
FAMOUS BEAUTY EXPERT



Your hands deserve a "facial treatment" occasionally too. The skin should be soft, smooth, white—cuticle free of ragged edges, nail tips white and without stain and nails filed preferably a perfect oval.

### A FACIAL FOR YOUR HANDS—THEY HAVE SUFFERED A SEVERE WINTER

It's been a very, very severe winter and the hands, being one of the vulnerable spots have suffered plenty. Even those who are accustomed to giving the hands faithful care, complain that they could not withstand the havoc of the extreme cold and wind. Even some parts of California and Florida had unusual, most unusual weather these past few months.

### Respond to Care

Hands have a way of showing strain very quickly. They become red and rough and look dark and wrinkled. But, fortunately, they respond just as quickly to care. They are certainly worthy of a treat occasionally, so treat them to the same fine preparations you use for your face and watch them soften and whiten under the kindly influence.

Here's a treatment you might try either in conjunction with or independently of the home manicure. Similar treatments are being given in some of the finest salons in the country, but you can easily follow the routine at home.

First cleanse your hands with cleansing cream. Remove with tissues. Then, heat a little muscle or facial oil over a low flame. Sweet almond oil or a pure grade of olive or mineral oil will do. Have the oil lukewarm or a little warmer—but not hot or it may scald. Dip large pads of cotton into the oil, apply over the hands. Then slip on a loose pair of cotton gloves, or better yet, bandage over the cotton pads to keep in place.

And if convenient, leave the oil on overnight. Then proceed with the rest of the treatment in the morning. Otherwise, leave the oil on as long as possible. Wipe off excess oil, apply a good emollient cream or just a little of your facial nourishing cream or skinfood.

### Sheer Lacy White Vestees Are Modish

Organdie, Mousseline, and Val-type Lace are Popular

Sheer and lacy white vestees come to the fore in neckwear to contribute the feminine touch to tailored spring suits. These fussy, flattering pieces to fill in between the lapels of tailors are commanding more and more attention for spring wear. Organdie and mousseline with Val-type lace, pin-tucking, shell-tuck edges, coarse fagoting and panels of lace, dominate the line.

### MATCHED ACCESSORIES

"Matched accessories" to give colour accent to spring costumes, among them being high-shade belts, handbags and boutonnières, sometimes developed in suede are being sponsored.

Evening dresses feature huge clips of rhinestones or diamonds, and in bracelets wide, massive design prevails.

Chinese art extends its influence to both media and colouring of the new jewelry, with gold and silver metal ornaments, particularly important, and a growing interest in enamels. There is some interest in the more obvious Chinese themes, such as carved jade jewelry. This inspiration has already been promoted in some of the costume jewelry in this country.

### SILHOUETTES

Regarding silhouettes, broad-shouldered lines are emphasized both in jackets and frocks, and the combination of mannish lines and lingerie details is very intriguing.

It is interesting to hear that dresses that offer the wearer changes are gaining favour. For example, necklines that can be worn open or closed, collars that can be manipulated in three different ways, and caps that can be worn at back or front.

Massage thoroughly. Remove with tissues.

Finish by patting with skin tonic. Dust with a little fine quality talcum powder. In place of the talcum a little finishing cream, the non-greasy variety may be used.

Here's a fine facial for your hands. And you'll find it sounds much more complicated than it really is. Two or three such treatments and your hands should show splendid improvement.

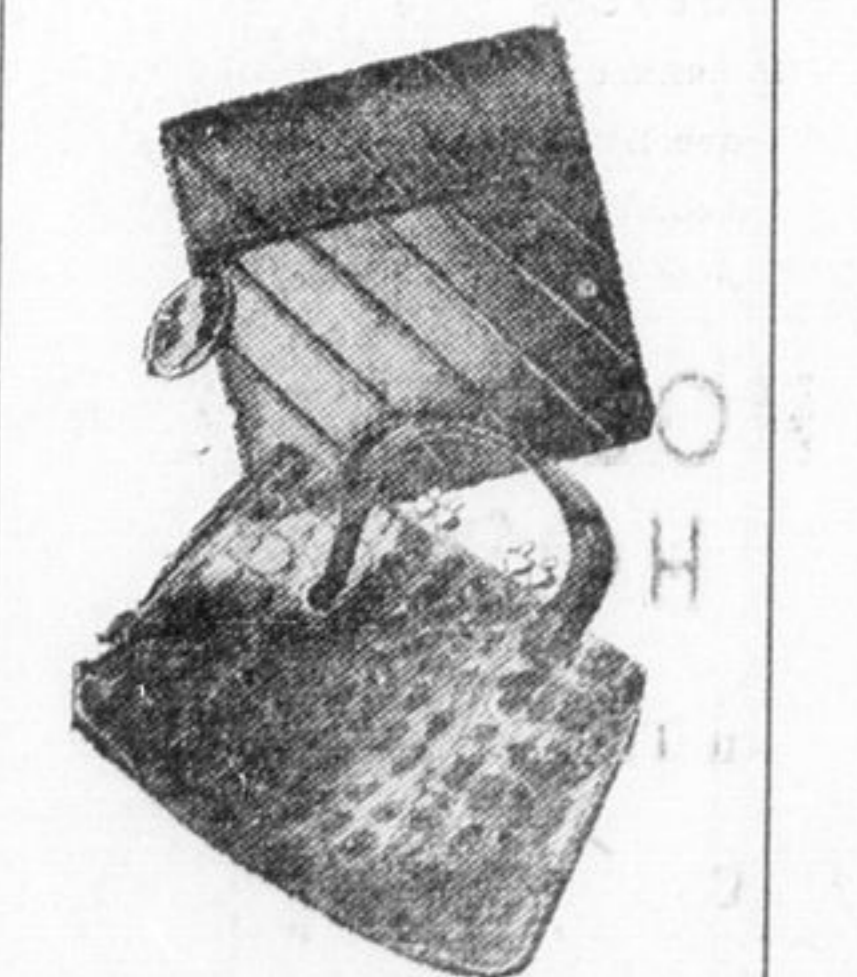
(Copyright, 1936, by the Bell Syndicate, Inc.)



# Bags

Here are the new bags brought up from New York. Modern in detail, smart in design with novel leathers and a new material (Swavette) never seen in handbags before. Patents are popular. Colours gay or conservative to compliment the new costumes.

Priced from \$3.35

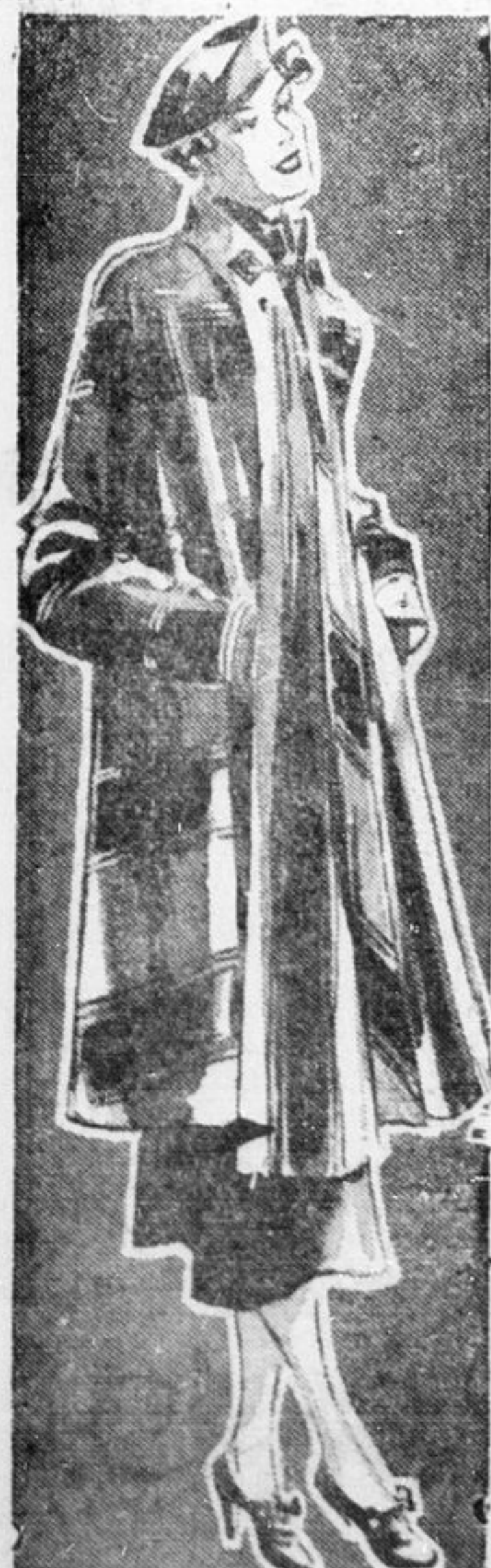


C. A. Remus  
JEWELLER

17 Pine St. N. Phone 190

# Spring Notes

A medley of fashions all in tune with spring will greet your eyes at Shragge's. You will see prints that strike new chords in colour . . . new harmonies in fabrics . . . trimmings scale new heights in smartness . . . silhouettes synchronize with the spring mood.



Everyone is showing keen interest in jacket dresses this spring. Some favour solids other gay prints. This charming model shown, gives in to both tastes and combines the two, right smartly too, to win the admiration of all. You may see this very number in company with other fashion leaders at Shragge's.

Untrimmed coats depend upon beautiful fabrics, flattering lines and intricate detail for distinction. You'll find all combined in Shragge's showing of the new silhouettes. Prominent in pattern are the bold checks and plaids of the fish-tail models—this year's latest contribution to high fashion. Reefers too in interesting materials are having a big play. Whichever you favour you'll find it at its best at Shragge's.

A.J. Shragge  
LIMITED