

BARGAIN HEADQUARTERS FOR RADIOS

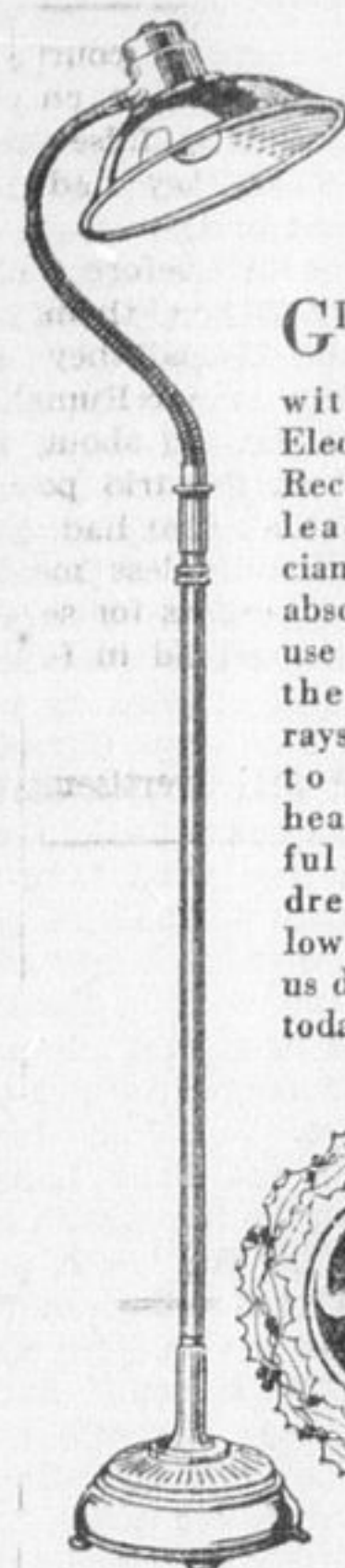
1 Westinghouse 1930 8 tube console \$39.00

1 Westinghouse No. 80 1931 console model \$49.75

1 Zenith 7 tube Console Radio \$33.00

1 1930 Atwater Kent table model \$25.00

The Gift of HEALTH!



GIVE "Indoor Sunshine" with a General Electric Sunlamp. Recommended by leading physicians because it is absolutely safe to use and supplies the ultra-violet rays so necessary to maintain health. Wonderful for the children. Models as low as \$29.50. Let us demonstrate today.

GENERAL ELECTRIC SUNLAMP

Electric Washer

What Gift could be more pleasing than a Connor Electric Washer delivered to your home Christmas Eve.



We have Washing Machines from \$79.50 to \$155.

and remember Connor's Thermo Washers have a 12 year guarantee. For \$5 we will deliver one to your home. Balance in monthly payments.

We also have a complete stock of 1932 Canadian General Electric Radios. These can not be excelled in price or quality.

"RADIO OWNERS" Do you know that one bad tube will cause the finest radio to sound terrible? We have installed the finest tube-tester that we could buy. This Service is Free. So bring us your Radio Tubes and have them tested and matched.

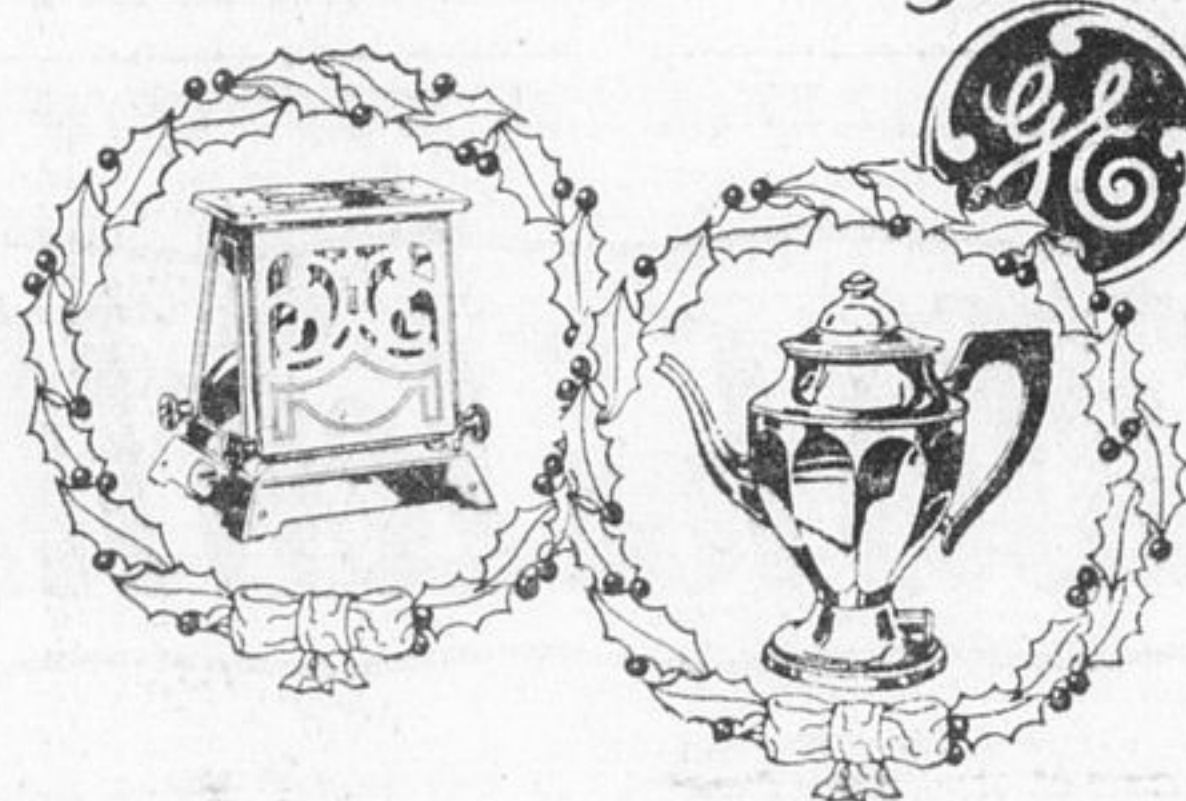
Phone 300

TAYLORS FOR SERVICE

Phone 301

Choose HOTPOINT Gifts!

THEY cost little but they give years of daily pleasure and magic convenience... General Electric Hotpoint Gifts. Come in and see the complete Hotpoint assortment on display. It will simplify your Christmas shopping.



We Extend to One and All Sincerest Good Wishes for A Merry Christmas and A Happy New Year

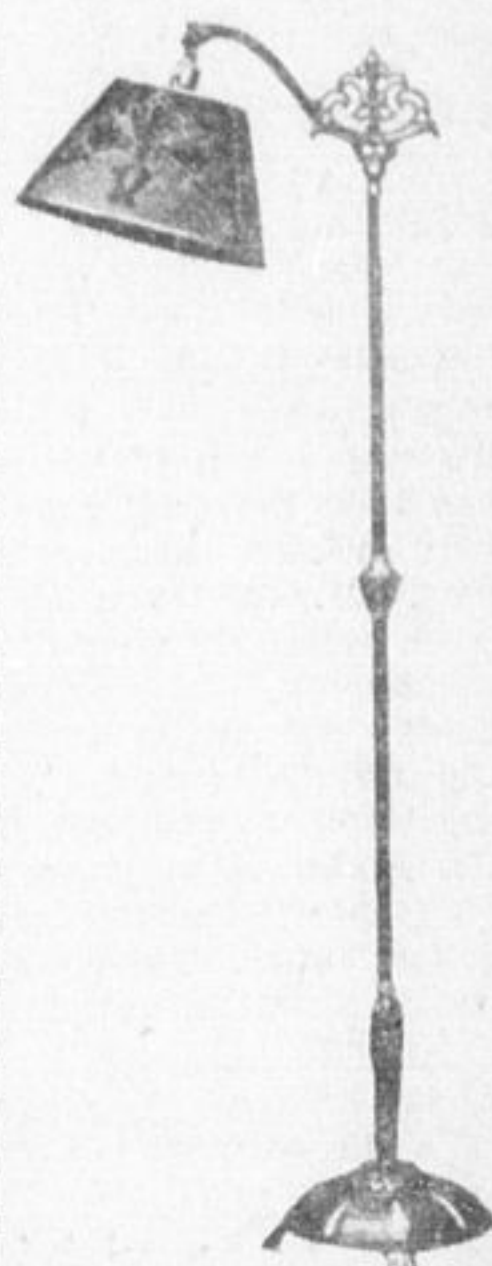
Refrigerators

For those who are particular the words Westinghouse Dual Automatic Refrigerator means Economy.



No. WL-45—4.28 Cubic Feet.....\$225.00
No. WL-73—7 Cubic Feet.....\$320.00

A down payment of \$10.00 will place one in your home. Balance arranged in monthly payments, starting the first payment in February.



Lamps from \$3.50 to \$9.75

THE GEORGE TAYLOR HARDWARE LIMITED

PHONE 300

PHONE 301

TIMMINS

Cobalt Cochrane New Liskeard Kirkland Lake

Big Gold Mine Camp in Northern Quebec

Noranda has Attained \$8,000,000 per Annum Rate. Siscoe and Granada Enlarging Mills. New Properties May Join Producers.

Northwestern Quebec is rapidly developing into one of the major gold producing areas of Canada. The mineral belt in this section extends a distance of about 120 miles from the Ontario-Quebec boundary line, and already contains five producing mines and has prospects of other producers in the course of the next few months, according to A. Buisson, in a report just released by the Department of Mines.

While Noranda first attained prominence as a copper producer, the low price for red metal somewhat changed the company's mining practice, and today it is recognized as one of the leading gold properties of the Dominion. Noranda, however, has not lost its identity as a copper producer, but, on the contrary, has a big output of this metal and has developed a market to absorb its entire current output. In recent months it has reached a production stage of about 30,000 tons of copper and about \$8,000,000 in gold annually, the latter figure being exclusive of exchange. The concentrator capacity has been doubled recently, and is now 2,000 tons daily.

Greater Production Planned

Granada Gold Mines, about five miles south of Noranda, is down 1,225 feet and is treating 100 tons of ore daily, which rate soon will be increased by another 50 tons. The O'Brien-Cadillac, in the Cadillac area, has been producing intermittently, for several years and has installed a 150-ton mill, which is now operating. The Siscoe Gold Mines, on Siscoe Island, has developed to a depth of 1,000 feet, with a mill treating 175 tons daily. A mill addition is now under construction which will bring the capacity to 225 tons daily. Siscoe's 1932 production will exceed \$1,000,000, exclusive of premium. Treadwell-Yukon, in the Pascalis area, has completed a large programme of mine development and has attained a depth of 700 feet. A 200-ton mill has been located on the property and is now in steady production.

Other properties that are slated for early production are the Beattie, where a 600 ton mill is now under construction; the Galatea, Beaufort, Ventures and the Matthews group in Pascalis. Favourable showings have been located on the Moffatt-Hall group on the Greene-Stabell properties, Francoeur group and the Arntfield. More recent finds which hold out promise of mines in the making have been made on the McWatters' property in the Rouyn area and on the Boylen and Hughes-Welaufer claims in Louvicourt Township. During the past months or two special effort has been made by those interested in the various properties to

obtain finances for development on a large scale, and it is stated that good success has been met with. It is expected that the coming year will see much new history made in Northwestern Quebec, and according to surface results a number of new producers should be added to the present growing list.

MANY CHRISTMAS TREES BEING HELD THESE DAYS

These are the days of Christmas trees and there are many of them being held these evenings and all greatly appreciated, probably more than in ordinary years. The Salvation Army held their annual Christmas tree on Tuesday evening. The various churches, societies, clubs and other organizations are also forward with Christmas trees, while individual homes also seem to be specializing in the Christmas tree idea this year.

Hamilton Spectator:—Wives who lose husbands in department stores these days can pretty well take for granted they'll find them again at the mechanical toy counter.

Halifax Herald:—An automatic caulking machine has been offered to the Sydney educational authorities, but it is objected that difficulty would be experienced in convincing a boy that it hurts the machine more than it hurts him.

Lake Shore Building Plant for Tailings

Kirkland Lake Mine Starts Work of Construction of Plant to Treat Tailings and Reclaim Losses on the Dumps

Construction of an addition to Lake Shore mill to house equipment to treat tailings has been started. The Northern Miner stated last week. The plant is to be running next spring and will have a capacity of 1,000 tons a day. A good profit is expected from the operation. Gold production should run \$500,000 up, annually.

Some months ago negotiations were held between Lake Shore and Wright-Hargreaves for a joint tailings treatment plant, but apparently the deal was not consummated as the plant Lake Shore is now building is for that mine's tailings only.

The new milling process, which includes concentration by flotation and special treatment of concentrates, has been adapted to treatment of Lake Shore run of mine ore with splendid results. This is to be used in the tailings plant. As cost of operation, including pumping of the material from the bed of the lake, is small, a good margin of profit is indicated. Complete tests of the material were made during last summer.

When a joint Lake Shore-Wright-Hargreaves reclamation mill was mo-

ted it was estimated that \$250,000 would be spent on a 1,500 ton plant, and that there was 4,000,000 tons of old tailings ahead of it. The proportion of expenditure then mooted was 17 to 8 and this may represent the proportion of tailings. Wright-Hargreaves' plans, now that Lake Shore is proceeding alone, have not been indicated. Tailings of both mines have been dumped for years in the east bay of Kirkland Lake. There is some mixture but the boundary lines of the two mines may be a control.

It is rather difficult to estimate the grade of the material that Lake Shore's plant will treat. Some of the older tailings, from the days when millheads were high and before long experimentation had improved extraction on the camp's difficult ore, must run \$3 to \$4 gold. On the other hand, tailings of later years may not run \$1 or \$1.50, and it was in recent years that mill tonnage rose to high quantities. The Wright-Hargreaves tailings are stated to average \$1.60, and perhaps Lake Shore's are a little higher.

As the extraction from the tailings plant is high, and costs of dredging and treatment low, a considerable addition to Lake Shore's profits is indicated, up to a half million dollars in good years. There is about eight or ten years' reclamation work ahead. Current tailings are being treated, and have been since last spring, by the same process and with all recoverable gold removed are not to be retreated.

Bunkhouse Burned at Kirkland Suburb

One Man Suffers Burns in Fire that Renders Three Families Homeless. Nearest Hydrant a Mile Away

Believed to have been caused by overheated stove pipes, fire destroyed the large two-storey combination bunk house and kitchen of the Honer Mine, at Chaput Hughes, a suburb of Kirkland Lake on Thursday last, rendering homeless three families who had been using the building for living quarters. One tenant, Jerry Stalmond, an aged man, of 60, was burned about the face in an attempt to salvage some of his personal belongings prior to the arrival of the firemen. He was taken into town, where he received medical attention.

Due to the isolated position of the mine, it was impossible to run in a line of hose to use in combating the flames, which had gained considerable headway, the nearest hydrant being more than a mile away. The firemen, however, did valiant work with the aid of bucket pumps in saving the outbuildings, using the wells nearby as a source of supply. Nothing, however, could be done for the main building as it was slowly reduced to a heap of ashes.

The fire was first noticed by the occupants of the building around 11 o'clock and an urgent call for assist-

ance was sent to the Kirkland Lake fire brigade over the telephone. In the excitement the person reporting the outbreak gave the location as the Hunton Mine and much time was wasted before Chief Matheson received a definite report on the location.

In speaking of this matter later in the day, Mr. Matheson pointed out that if people reporting an outbreak would make sure of the location and then notify the operator at the telephone exchange in preference to calling the fire hall direct, much time would be saved, as well as lessening the hardship on the men, who were in the case of Thursday's fire subjected to an additional three miles' ride in a biting cold wind at 25 below zero, several frozen ears being the result.

The Honer Mine, scene of Thursday's fire, has been closed down for the past 10 years. It lies about a mile in the bush from the main Swastika-Kirkland Lake highway, some three miles west of Kirkland Lake.

WHIST DRIVE TO BE GIVEN BY ALL-BRITAIN SOCIAL CLUB

The All-Britain Social Club this week announces two whist drives to be given in the Hollinger Recreation hall. One of these whist drives will be held on Thursday of this week (this evening), Dec. 22nd. The Christmas drawing will take place on this date.

The other whist drive will be on Tuesday of next week, Dec. 27th, at 8.30 p.m. It will be a poultry whist drive and none should miss it.