

Newcomers to Canada-WELCOME!

We hope you'll like it here and do well. And we invite you to try Red Rose Tea among other good things.

RED ROSE RED LABEL TEA

RED ROSE ORANGE PEKOE TEA

RED ROSE TEA "is good tea" 102



EVERY new Frigidaire is equipped with the Frigidaire Cold Control which speeds the freezing of ice cubes and makes possible dozens of new frozen desserts and salads.

See the Cold Control and other new Frigidaire features at our showrooms. Frigidaire operates from either central station or from an individual electric plant.

S. D. EPLETT & SONS
Timmis - Ontario

FRIGIDAIRE
PRODUCT OF GENERAL MOTORS



BETTER BRAN FLAKES

a grand total of flavor, pep and health

TASTE THEM! Only Kellogg's Pep Bran Flakes have that matchless flavor—that good-to-the-last-spoonful crispness.

Brimful of vim and zest. Full of crunchy wheat. All the nourishment of the whole grain.

Plus extra bran for extra health. Just enough added fiber to be mildly laxative.

Flavor, pep and health—all combined. That's why Kellogg's Pep Bran Flakes are better bran flakes.

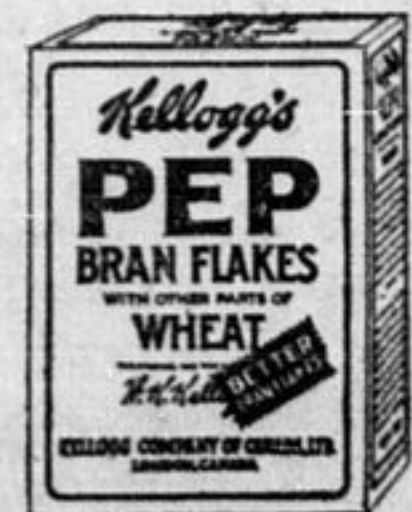
Great for breakfast. Fine for lunch. A special treat for children at every meal. Serve with fruits or honey—with milk or cream.

Look for the red-and-green package at your grocer's. Made by Kellogg in London, Ontario.

IMPORTANT—Kellogg's Pep Bran Flakes are mildly laxative. ALL-BRAN—another Kellogg product—is all bran and guaranteed to relieve both temporary and recurring constipation.

Kellogg's

PEP BRAN FLAKES



HOWEY SHIPS FIRST OF ITS BULLION BY AEROPLANE

Proceeds Being Used for Paying Off \$50,000. Bullion Was Shipped to Mint at Ottawa. Mill at Howey May be Enlarged

The first shipment of bullion from the Howey Gold Mines was recently brought out to Sioux Lookout by aeroplane and shipped from there by Canadian National Railways to the Ottawa mint. News of this fact was given last week though the shipment was made a few days earlier. Naturally little would be said about the shipment until after it was actually made.

Despatches from the North last week mentioned that this was the first shipment of any size of gold to come out of the Patricia district and is reported to have consisted of three 100-pound bricks, representing approximately \$75,000 worth of the precious metal. According to word from the head office the new mill is operating satisfactorily on a basis of about 400 tons daily, with heads averaging about \$7.00 per ton. President J. E. Hammell, who has been absent for several months attending the third Empire Mining Congress in South Africa is expected back in Toronto about June 7th.

Howey's progress has been a centre of interest since the property was staked by the Howey brothers in 1925. Located as it is 110 miles north of Sioux Lookout, in the Red Lake area of the Patricia district of Ontario it had to battle its way against obstacles of a kind only known to the pioneer. Transportation, always an important factor in the development of a mine, proved to be a costly item, averaging from about \$110 per ton in winter to one-half that amount in summer, when a continuous water route, with the aid of marine railways past the portages, was available.

The delivery of approximately \$75,000 worth of gold bullion marks the culmination of five years' effort to make a mine in a heretofore unproven area, and marks the first extension of Ontario's gold producing districts, in the past ten years.

Howey's power problems were second only to its transportation problems, but early in 1929 the decision of the Ontario government to develop the hydro-electric site at Bar Falls, on the English river provided cheap power that will largely offset the high transportation costs. Under terms of an agreement with the Hydro-Electric Power Commission, Howey contracted to take 2,000 h.p., at \$25 per horsepower year at the power station, and to build a power line, 40 1/2 miles in length, to its property, also to construct a substation. This involved an expenditure on the part of Howey of approximately \$275,000 and will be sufficient to operate a mill of 2,000 tons daily capacity.

In May, 1929 the contract was given to the General Engineering Company to construct a 500-ton daily capacity cyanide mill, with a coarse crushing capacity of 1,000 tons daily. This mill was started on production in March this year, and is now treating approximately 400 tons of ore daily, which assays approximately \$7 per ton. This new mill is working very smoothly, and efficiently, the tailings assaying only 20 cents per ton, indicating a good recovery is being made. It is too early to expect a statement on operating costs, but engineers conversant with the conditions estimate they will not exceed \$5 per ton, and it would come as no surprise to them if the management would be able to bring them down to \$4 per ton when the mill is stepped up to 1,000 tons daily.

The company's property extends for approximately 7,000 feet along the main break, and development has taken place through a three-compartment shaft, completed to a depth of 1,085 feet in July of last year. Levels have been established at 125-foot intervals, with development at the 1,000-ft. level providing the extension of the ore bodies, at least to that depth. On the 1,000-foot level, ore assaying \$6.75 per ton has been developed over a width of 40 feet for considerable distance.

Ore reserves were officially stated at the company's annual meeting, in April 1929, as being sufficient to operate a 500-ton daily capacity mill for three years, or approximately 500,000 tons overlying \$7 per ton. This estimate was made on the basis of development to the 400-foot level. Since that time, development to the 1,000-ft. level has been such that it is unofficially stated at least 1,500,000 tons of a like grade have been developed.

With development extending the ore reserves, serious consideration is being given by the management and executive to increasing the mill capacity to 1,000 tons daily. This can be accomplished for approximately \$50,000 since provision was made at the time of construction for such an addition. The coarse crushing capacity is already of 1,000 tons capacity, as is much of the other equipment. Power for operations on the basis of 1,000 tons of ore daily, would be had at no additional cost as according to Howey's contract it is now paying for 2,000 horsepower.

The outlook for earnings is quite bright, although owing to the number of shares outstanding the earning per share will be low. On the basis of treating 500 tons of ore daily, from which at least \$2 a ton operating profit should be realized, an annual operating profit of \$350,000 is indicated, equivalent to 7 cents on each of the 4,900,000 outstanding shares. If the mill capacity is stepped up, as contemplated, this would be increased to approximately 15 cents per share.

The company was financed by a loan of \$400,000 from W. S. Cherry, one of its directors, that the mill might be completed and the power line built, according to The Sudbury Star. This

AUTOMOBILE MARKERS NOW TELL HOME TOWN OF CARS

License: Usually Issued Where Cars are Owned. New Markers Indicate Where the Licenses Were Issued.

It is always interesting to speculate as to where visiting cars come from. Under the new system of markers this is not a difficult task. In one way the markers for 1930 indicate the town where the license was issued. The markers are designated by letters and numbers combined and each town or city was allowed a different letter or combination of letters. The following is a sort of index to the automobile numbers now in force in Ontario. It is worth preserving:—

A 1 to A 999	Toronto
AA 1 to AO 999	Chatham
AP 1 to AY 500	Woodstock
AY 501 to AZ 999	Sarnia
B 1 to B 999	Toronto
BA 1 to BE 999	Sarnia
BF 1 to BF 500	St. Thomas
BP 501 to BX 999	Stratford
BY 1 to BZ 999	Kitchener
C 1 to C 999	Windsor
CA 1 to CJ 999	Kitchener
CK 1 to CM 400	Petrolia
CM 401 to CM 999	Port Rowan
CN 1 to CV 500	Brantford
CV 501 to CZ 999	Guelph
D 1 to D 999	Windsor
DA 1 to DB 999	Guelph
DC 1 to DH 999	Galt
DJ 1 to DN 999	Simcoe
DO 1 to DR 500	Milton
DR 501 to DW 500	Brampton
DW 501 to DZ 999	Orangeville
E 1 to E 6500	Walkerville
E 6501 to E 9999	Kingsville
EA 1 to EA 999	Orangeville
EB 1 to EE 500	Harriston
EE 501 to EJ 200	Wingham
EJ 201 to EM 300	Clinton
EM 301 to EO 600	Walkerton
EO 601 to ES 700	Hanover
ES 701 to EU 400	Kincardine
EU 401 to EW 999	Goderich
EX 1 to EZ 999	Owen Sound
F 1 to F 1500	Kingsville
F 1501 to F 2300	Amherstburg
F 2301 to F 9999	Reserve
FA 1 to FB 999	Owen Sound
FC 1 to FD 700	Warton
FD 701 to FH 800	Collingwood
FH 801 to FL 300	Midland
FL 301 to FM 800	Meaford
FM 801 to FP 900	Listowel
FP 901 to FS 300	Watford
FS 301 to FT 400	Paris
FT 401 to FU 100	Gravenhurst
FV 101 to FV 200	Parry Sound
FW 201 to FW 400	Burk's Falls
FX 401 to FY 999	Dumville
FZ 1 to FZ 999	St. Catharines
G—Omitted	
H 1 to H 9999	Hamilton
HA 1 to HH 600	St. Catharines
HH 601 to HO 999	Niagara Falls
HP 1 to HS 700	Fort Erie
HS 701 to HY 300	Welland
HY 301 to HZ 999	North Bay
I—Omitted	
J 1 to J 9999	Hamilton
JA 1 to JA 600	North Bay
JA 601 to JB 200	Kenora
JB 201 to JB 300	Sioux Lookout
JB 301 to JB 400	Schreiber
JB 401 to JB 500	Chapleau
JB 501 to JB 999	Dryden
JC 1 to JD 900	Fort Frances
JD 901 to JJ 100	Fort William
JJ 101 to JL 999	Port Arthur
JM 1 to JM 500	Bruce Mines
JM 501 to JR 200	Sault Ste. Marie
JR 201 to JR 700	Blind River
JR 701 to JV 400	Sudbury
JV 401 to JW 200	Cochrane
JW 201 to JW 800	Iroquois Falls
JW 801 to JY 400	Timmis
JY 401 to JZ 400	New Liskeard
JZ 401 to JZ 999	Cobalt
K 1 to K 9999	Hamilton
KA 1 to KA 900	Cobalt
KA 901 to KB 800	Sturgeon Falls
KB 801 to CK 300	Espanola
KC 301 to KD 200	Swastika
KD 201 to KD 700	Thessalon
KE 701 to KE 500	Gore Bay
KE 501 to KE 800	Little Current
KE 801 to KF 700	Powassan
KF 701 to KF 900	Huntsville
KF 901 to KJ 400	Bracebridge
KJ 401 to KM 300	Orillia
KM 301 to KR 800	Barrie
KR 801 to KX 200	Lindsay
KX 201 to KZ 999	Peterborough
L 1 to L 9999	London
LA 1 to LE 200	Peterborough
LE 201 to LF 600	Beaverton
LF 601 to LR 400	Oshawa
LR 401 to LS 900	Bowmanville
LS 901 to LU 300	Port Hope
LU 301 to LX 200	Pembroke
LX 201 to LZ 300	Renfrew
LX 301 to LZ 999	Arnprior
M 1 to M 999	London
MA 1 to MA 600	Arnprior
MA 601 to MC 800	Campbellford
MC 801 to MD 999	Hastings
ME 1 to MH 300	Cobourg
MH 301 to MJ 600	Tweed
MJ 601 to MK 600	Bancroft
MK 601 to MV 300	Belleville
MV 301 to MY 999	Napanee
MZ 1 to MZ 999	Picton
N 1 to N 5000	London
N 5001 to N 9999	Reserve

loan is a preferred obligation, to be repaid from profits. In addition to the above loan an advance of \$50,000, from the same source, was made, pending returns from bullion shipments. With the initial shipment of \$75,000 worth of bullion this week, this loan will be liquidated on June 1.

NA 1 to NB 500	Picton
NB 501 to NC 400	Tamworth
NC 401 to NC 999	Tilchborne
ND 1 to NK 999	Kingston
NL 1 to NM 800	Gananoque
NM 801 to NO 700	Carleton Place
NO 701 to NU 400	Smith's Falls
NU 401 to NX 600	Brookville
NX 601 to NY 999	Kemptville
NZ 1 to NZ 999	Prescott

O 1 to O 999	Toronto
OA 1 to OA 900	Prescott
OA 901 to OD 200	Winchester
OD 201 to OK 100	Cornwall
OK 101 to OM 100	Vankleek Hill
OM 101 to ON 600	Alexandria
ON 601 to ON 999	Tiltsburg
OO 1 to OZ 999	Ottawa

P 1 to P 999	Toronto
PA 1 to PK 999	Ottawa
PL 1 to PL 400	Perth
PL 401 to PL 800	Wallaceburg
PL 801 to PM 200	Keewatin
PM 201 to PM 600	Richards Landing
PM 601 to PM 999	Strathroy
PN 1 to PN 400	Havelock
PN 401 to PN 800	Minden
PN 801 to PN 999	Manitowaning
PO 1 to PP 200	Tiltsburg

Q—Omitted	
R 1 to R 9999	Toronto
S 1 to S 9999	Toronto
T 1 to T 3600	Toronto
T 3601 to T 9999	Weston
U 1 to U 1400	Weston
U 1401 to U 4700	Unionville
U 4701 to U 8000	Newmarket
U 8001 to U 9999	Woodbridge
V 1 to V 1000	Sutton
V 1001 to V 9999	Toronto
W 1 to W 9999	Toronto
X 1 to X 9999	Toronto
Y 1 to Y 9999	Toronto
Z 1 to Z 9999	Toronto

Honour Roll for May at Moneta Public School

The following is the report for May of Moneta public school junior classes:

Sr. I—Miss Connor, teacher—Phyllis Banks 85, Margaret Sova 83, Helen Knott 81, Mary Bennett 81, Louis Vaccino 79.

Jr. I—Miss Jarrett, teacher—Esme Hooper 84, Eva Crocini 81, Leo Bandiero 80, Peter Ferreri 78, George Leach 78, Mary Hunt 77, William Hodgins 76, Francesco Pontello 75.

Sr. Pr.—Peter Spada 79.

Jr. Primer—Miss Hughes, teacher—A. Class—Nicky Boychuk, Mable Westline, Rocco Paoline.

B. Class—Doris Shaheen, Minnie Onica, Gilda Pellizzari.

K.P.—Miss Davey, teacher—Jimmy Knott, Vivian Pierce, Louise Ferreri, Stella Rao, Ernest Mason, Normand Mascioli, Ledo Omacoli.

Thro' the Meshes—When we're right, we credit our judgment; when we're wrong we curse our luck.

DONATIONS IN TIMMINS TO HOSPITAL FOR CONSUMPTIVES

Through the columns of The Advance the treasurer of the Muskoka hospital for consumptives desires gratefully to acknowledge the following contributions received in Timmins by the field secretary of the National Sanitarium Association—Rev. Fath. Theriault, \$10; G. H. Gauthier, \$5.00; Geo. Taylor Hardware, \$5.00; Sullivan & Newton, \$5.00; W. G. Scott, \$5.00; John Watt, \$5.00; W. E. Williams, \$5.00; W. T. Curtis, \$5.00; E. H. Longmore, \$5.00; A. W. Young, \$5.00; John Fog, \$5.00; S. L. Honey, D.D.S., \$3.00; T. E. Pritchard, \$3.00; Simms, Hooker & Drew, \$2.50; Dean Kester, \$2.00; W. H. Pritchard, \$2.00; T. Bucovetsky, \$2.00; A. Shann, \$2.00; Northland Motors, \$2.00; Daher & Sons, \$2.00; G. Dalton, \$2.00; Shankman Bros., \$2.00; S. David, \$2.00; Hill, Clark & Frances, \$2.00; F. Feldman, \$2.00; Dr. J. McInnis, \$2.00; Timmins Funeral Service, \$1.00; L. Silver, \$1.00; E. L. Allwarth, \$1.00; C. A. Duval, \$1.00; J. Ellis, \$1.00; Dr. Brill, \$1.00; Dr. Roberts, \$1.00; C. Desaulniers, \$1.00; Frank Byck, \$1.00; P. Morin, \$1.00; Ideal Hardware, \$1.00; Martin & Fishman, \$1.00; Fearless Drug, \$1.00; A. J. Shragge, \$1.00; Timmins Provisions \$1.00; Sundry contributions, \$1.65; total, \$109.15.



Bathing Beauty's Complexion Secret

"I have now used Kruschen Salts for a long time, and think it is wonderful. Everyone tells me how well I look and what a beautiful skin I have. I tell them that it is thanks to your wonderful Kruschen Salts. I have just won a second prize in a bathing beauty competition of a leading newspaper. I shall use it always, and tell all my friends to do the same." —Miss A. B.

This is beauty's first secret—a good complexion comes from within. No need for creams or lotions—put the colour on from inside. Keep your blood pure and healthy with the daily dose of Kruschen, and beauty's reward will be yours—a clear skin, bright, sparkling eyes—the abounding joy of good health.

Kruschen Salts is obtainable at drug and department stores in Canada at 75c a bottle. A bottle contains enough to last for 4 or 5 months—good health for half-a-cent a day.

LOW TOURIST FARES to JASPER NATIONAL PARK and ALASKA

Take the Mt. Robson Route

Low cost trip to the Pacific Coast. What a chance to see our Canada! The great prairies... Jasper National Park... Mount Robson and the Canadian Rockies... Vancouver and Victoria.

Perhaps a glorious cruise through the Inland Seas to Prince Rupert and Alaska... glaciers... towering mountains... the Klondike. Diverse routes are available offering delightful variety of scenery. These fares are in effect from May 15 to September 30.

Descriptive folders attractively illustrated may be obtained from any Agent of Canadian National Railways.

Canadian National

TO EVERYWHERE IN CANADA

For Sure Results Try Our Want Ad. Column

CHRYSLER MOTORS PRODUCT

THE FINER DE SOTO SIX

A BEST-SELLER FOR 22 MONTHS -NOW IMPROVED, LOWER IN PRICE

Six-cylinder automobile value reaches its 1930 peak in the finer De Soto Six—an even better car at a lower price than that famous De Soto Six which broke all sales records for a first-year car—and spread its huge success over 22 months without a single change in design, engineering or price. ¶ To improve a record-breaking car—to make a beautiful car smarter and more luxurious—and at the same time lower the price—that is real accomplishment. ¶ The improved De Soto

Six has a new Steelweld* body—the last word in body silence, strength and smartness. ¶ The improved De Soto Six engine is bigger and more powerful—incredibly smooth and quiet—resulting in an even swifter and more thrilling performance.

NEW LOWER PRICES

Roadster, \$1030; Business Coupe, \$1055; De Luxe Coupe, \$1095; Four-Door Sedan, \$1110. All prices f. o. b. factory, including standard factory equipment (freight and taxes extra.)

INCREASED POWER GREAT PERFORMANCE STEELWELD* BODY

* A new type of fine-car body construction—steel welded to steel—no joints—utmost solidity—a distinct advance in body silence, strength and safety.

WORTHY COMPANION CAR TO THE POPULAR DE SOTO STRAIGHT EIGHT

NATIONAL MOTOR SALES

Service Dept. 7 Cedar St., South Telephone No. 3, Timmins

Show Room 55 Third Ave. Timmins

Four Body Styles, \$735 to \$775. All prices f. o. b. factory including standard factory equipment (freight and taxes extra.)

PLYMOUTH

SOLD BY DE SOTO DEALERS EVERYWHERE

\$735

And up, f. o. b. factory