

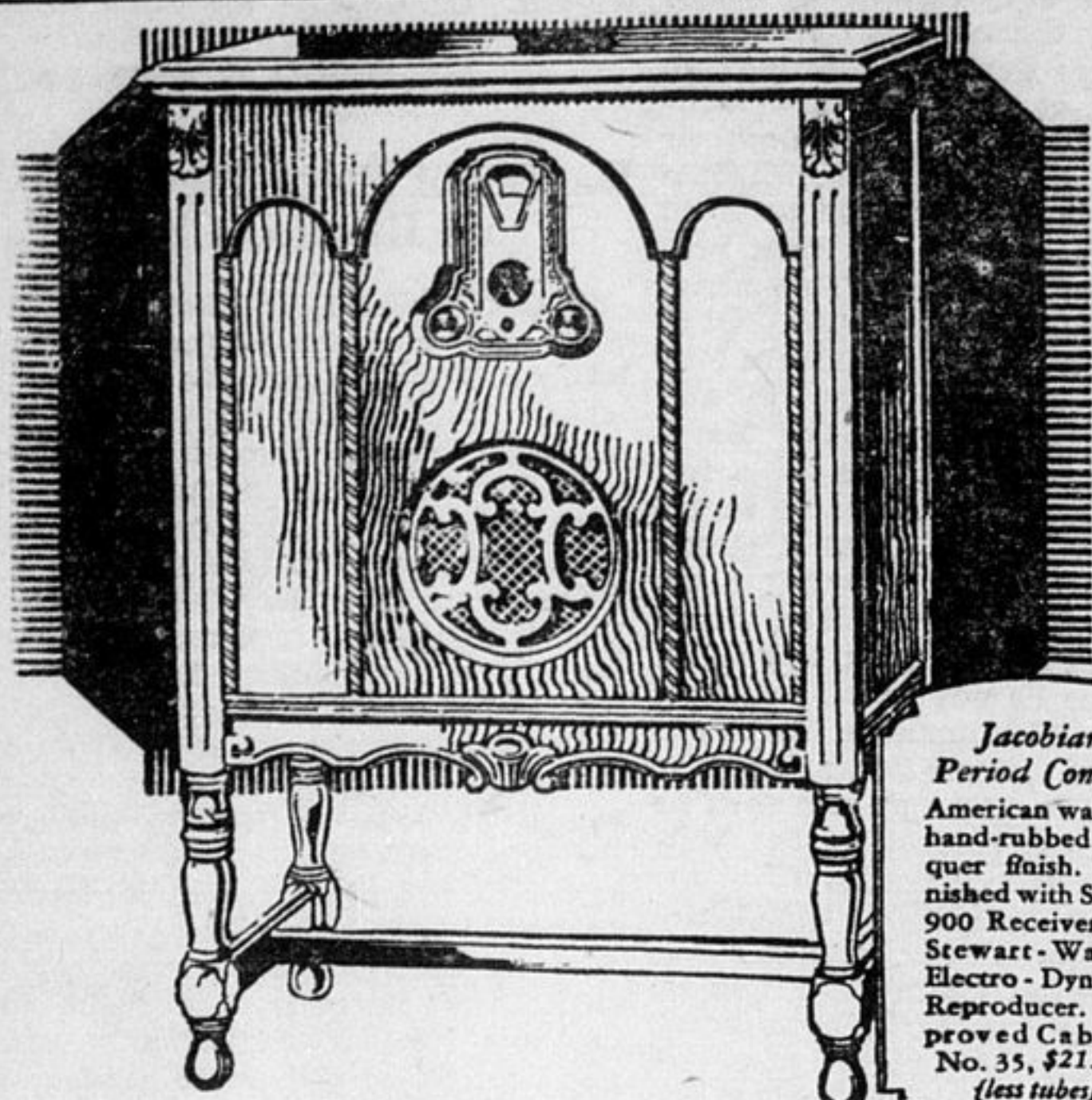
**Drafts**

WHEN you wish to remit money to foreign countries a draft purchased at any of our branches makes it a simple matter.

This bank has arrangements for making drafts direct upon leading bankers throughout the world.

**IMPERIAL BANK**  
OF CANADA

TIMMINS BRANCH, SOUTH PORCUPINE BRANCH, D. SUTHERLAND, Manager. C. A. KEHOE, Manager.



Jacobian Period Console American walnut; hand-rubbed lacquer finish. Furnished with Series 900 Receiver and Stewart-Warner Electro-Dynamic Reproducer. Approved Cabinet No. 35, \$213.00. (less tubes).

NOT just a few—but every modern improvement known to radio is incorporated in the new Stewart-Warner. Even a plug-in for TELEVISION is included! And the remarkable Coast-to-Coast "Screen Grid Circuit"! See this amazing radio NOW; we'll gladly demonstrate it for you.

**STEWART-WARNER**  
The Set With **RADIO** The Punch

L. HALPERIN  
JEWELLER & OPTICIAN

F108

For Sure Results Try Our Want Ad. Column

FOR YOU AND YOURS



**60 YEARS**

SIXTY years ago The Mutual Life Assurance Company of Canada was born. With it came the birth of a new idea in Canada—a Life Insurance Company conceived and promoted on a purely Mutual basis, with no private capital, and with every single policy holder an active participant in the Company.

It is a far cry to those historic days of Confederation. That small band of five hundred original policy holders has grown to become a Company, nation wide in its influence and performance. This year The Mutual Life Assurance Company of Canada celebrates its Diamond Jubilee, an outstanding milestone in a truly remarkable history of continued growth and achievement. A history like this proves the soundness of the principle of mutuality.

The Mutual Life of Canada still remains as Canada's first and only Mutual Insurance Company sharing its benefits and profits with an increasing host of satisfied policy holders. To-day, more than ever, it stands at the service of all, offering the most protection at the lowest cost.

Our Agent will be glad to explain, without any obligation, the numerous advantages of Mutual Life Insurance

THE **MUTUAL LIFE ASSURANCE COMPANY OF CANADA**  
WATERLOO, ONTARIO

AD 300

**POSSIBILITIES OF NORTH  
NO MORE THAN SCRATCHED**

Head of the Temiskaming and Northern Ontario Railway Commission Reviews Progress of Past Year and Prospects for Future.

Reference was made last week to the published statement made by Geo. W. Lee, chairman of the Temiskaming and Northern Ontario Railway, in regard to the accomplishments for the past year and the prospects for the future.

The T. & N. O. and the North Land are so complementary that the story of the one can not be told without giving the history of the other. In the same way no peep into the future for either can be made without having a glimpse of the other. Hence Mr. Lee's article, which should have special interest for all Ontario, has a double significance for this North Land. Mr. Lee writes as follows—

At this season, it is customary to review accomplishments for the past year in order to find inspiration for the future. I am, therefore, privileged to record another year's successful operation of the Temiskaming and Northern Ontario railway, due to the general prosperity of the north country, as a whole, and the gradual increasing expansion of the many business undertakings in that part of northern Ontario tributary to and served by the railway.

The shrinkage in earnings both freight and passenger on other Canadian railways, due to the deferred handling of grain traffic, etc., has also had its effect—to a certain degree—on the earnings of our railway, and while operating expenses have also shown a proportionate reduction from last year, even after taking care of general wage increases put into effect on all Canadian railways the net result of earnings has not been as great as in 1928.

The note of optimism which has already been sounded in the press as emanating from various authoritative sources, causes us to look forward to a steady improvement of conditions for the future.

Our forests are yielding a harvest not generally observed by the uninitiated, but which contributes a market value annually of approximately \$100,000,000 for the whole province, and present indications show that a heavy movement of forest products may be expected over the T. and N.O. railway this winter.

Agriculture is achieving a notable progress throughout the north. Farmers have improved their methods of production on a more scientific basis and greater success in the future may well be anticipated in this line of endeavour.

The mining industry, regardless of market recessions and fluctuations keeps marching on, and its soundness is well reflected in the steady progress which has been made during the year 1929. Increased production over 1928 will be shown in gold, silver, copper and cobalt from the mines operating in the district served by the T. and N.O. railway.

In the Porcupine camp, nine mills were operating during the year and while the total production for 1928 was \$20,500,000, the results for 1929 will show slightly less. A disastrous fire occurred at the Dome on October 28, 1929, completely destroying their mill and adjoining buildings, thereby cutting off production from this mine for the remainder of the year. Constant rumor persists that the Dome will rebuild their mill and again take its place among the profitable mines of the district.

The Kirkland lake camp continues to show a marked increase in production from year to year, being \$14,000,000 for 1929 as compared with \$12,270,000 for the year previous. The six producers in order of valuation of production were Lake Shore, Teck-Hughes, Wright-Hargreaves, Sylvanite, Kirkland Lake Gold and Barry-Hollinger.

Even though the price of silver has been gradually dropping throughout the year, the production of silver shows a notable increase over last year. This is due to the steady demand for cobalt, the tough content associated with silver. The price of this commodity has increased to such an extent that most of the old silver mines are now being searched for this cobalt ore.

It is remarkable how the mining industry has flourished in the province of Ontario, starting from a small beginning not so very many years ago until now the mineral output approximates one hundred millions of dollars annually, of which the gold contribute about one-third, and dividends paid for the past 26 years almost reach the two hundred million dollar mark.

The Noranda smelter, located at Noranda, Que., approximately 60 miles from Swastika on the T. & N. O. railway, has been steadily increasing its production of copper until it has now reached its present objective of 2,000 tons per day, treating ores from its own mine (Horne), and also regular shipments from the Waite-Ackerman-Montgomery property. It is anticipated that other producers will develop in this Rouyn camp in the not too distant future.

I now proceed to another important phase of development in the district north of Cochrane towards Moose Factory. The clay belt extends for about 70 miles north of Cochrane and 15 miles beyond we reach the coastal plain which extends for approximately 100 miles to James bay in a flat-lying country.

The most noteworthy minerals that have been found so far are lignite, coal, fire-clay, kaolin, silica sand and mica. There are also enormous beds of gypsum of high quality in the lower



HEADS NEW BRUNSWICK POLICE

Brigadier General F. W. Hill, C.B., C.M.G., D.S.O., who assumed his new duties as Commissioner of the New Brunswick Provincial Police on January 1st. General Hill has been Officer Commanding the New Brunswick Military District and before entering military service was engaged in the practice of law.

formations, and oil seepages would also indicate the possibility of locating oil and gas. The most promising prospect to date has been the lignite coal, and early this year drilling was started near the Blacksmith Rapids, under the direction of Dr. W. S. Dyer, for the Ontario Department of Mines.

Very encouraging results have been obtained in this preliminary work, and so far it is reported that an area has been opened up which indicates an approximate tonnage of 60,000,000 tons.

The T. and N. O. railway has been extended to a point 100 miles north of Cochrane, and an engineering party is now engaged in relocating the line beyond for possible further extension of the railway to more closely serve future mining operations in the lignite field.

The T. and N. O. railway with its 600 miles of main line and branches while small compared with the transcontinental lines, has impressed its individuality and success upon the general business conditions of the province to which it owes its inception, and is ever progressing and expanding towards greater endeavour and achievement.

The development of the northern part of the province has been one of the most spectacular business romances of the country, and this is inseparably linked with the progress of the railway that has opened up the richly endowed territory. Due to the policy of main line extension and branch lines construction the mines and general industries of the northland are brought into close proximity with the financial and business centres of Canada and the United States.

All steel trains of most modern construction daily serve the travelling public over the entire system to the full extent of their requirements and the consequent accessibility, ease and comfort of travel have proved a most important factor in the upbuilding of the country at large.

The railway has been maintained in a healthy physical condition, and at all times a small army of workers is engaged on the line working on the roadbed and on the bridges, and while their work is not spectacular, it is of vital importance. Through their loyalty to the duties allotted to them the line has been maintained as a very high standard of efficiency to permit the smooth operation of all classes of trains.

With the earnestness of enthusiasm for the future, the Temiskaming and Northern Ontario railway is ready at all times to continue its policy of extension and expansion wherever necessary to meet the growing needs of the territory and province generally.

**POLICY OF REFORESTATION OF ONTARIO GOVERNMENT**

Arthur Richardson, of Toronto, who has charge of the reforestation work in connection with the Forestry Department of Ontario, recently delivered an interesting address before the Lions' Club, St. Catharines, Ont., his subject being "Planting in the Wilderness."

Mr. Richardson outlined the policy which is being followed by the government. Three nurseries are operated by the government for the purpose of growing trees. Any farmer, who desires can each year get 4,000 trees from these nurseries for planting on his own ground. Provision is also made for supplying counties or municipalities free of cost. Several places have taken advantage of the government's offer and the trees provided have been utilized as a money-making scheme as well as for beautification and useful purposes. Pine trees, he stated, grow well in sandy soil where it is practically impossible to cultivate other crops and they are very effective in preventing the drift of sand. The people of Ontario Mr. Richardson thought, paid too little attention to their forests, having an idea that Northern Ontario was so thickly forested that there was no need to worry about a depletion. Unless provision was made immediately for reforestation there would in time be no forests, said Mr. Richardson. It was essential that there should be replanting, protection, and development of the forest resources. The talk was illustrated with a number of beautifully coloured slides which depicted the possibilities of reforestation.

Kimberly Press—Some guys who were enjoying the Yuletide festivities to the fullest on Tuesday night, have asked the town council to "kindly straighten out our streets."

**Riches of the North as Indicated by the T. & N. O.**

The following editorial in the Toronto Globe this week is well worth thoughtful perusal and consideration not only by the people of the North Land but also by all the citizens of the province of Ontario. As The Globe points out the progress of the T. & N. O. gives striking evidence of the riches of the North Land. It is true that the success of the People's railway is due in large measure to its able management and careful direction, but it is equally true that while the field is being well developed success only proves the fact that there is a fair field to be cultivated. The editorial refers to past success and then proceeds to suggest the greater development possible and probable in the days to come. As The Globe says, "The railway and the northern part of the province are prospering together." Probably no other single factor is doing as much for the advancement of the North Land as the T. & N. O. Railway. In discussing the matter, The Globe says:—

"The people of this Province would do well to study the condition of their own railway, the Temiskaming & Northern Ontario road. Chairman George W. Lee, writing in The Globe, recounts the progress that has been made by this line during the past year. It is a story that reads almost like a romance, and is in reality a romance of present-day business. Ever since its inception the T. & N. O. has been feeling its way into the North country, extensions coming as warranted by settlement and development. The railway and the northern part of the Province are prospering together. Mr. Lee dwells on the fact that agriculture is achieving a notable development throughout the North. Farmers are improving their methods of production, and are taking advantage of the benefits conferred by new inventions and the knowledge placed at their disposal by workers in the field of research.

"The forests of the North also are yielding a harvest which, as Mr. Lee says, is much greater than is generally understood by the people of the Province, and it is expected that this winter will see great advances in this field of production. Regardless of market crashes the mining production of Northern Ontario continues to make progress, with increased outputs of gold, silver, copper and cobalt by mines operating in the district served by the T. & N. O.

"The greatest optimism is expressed as to the future of the vast coastal plain stretching toward James Bay, with its scarcely realized possibilities for the miner and the farmer. There is tremendous import in Mr. Lee's statement to the effect that "the most noteworthy minerals that have been found, so far, are lignite coal, fire-clay, kaolin, silica sand and mica. There are also enormous beds of gypsum of high quality in the lower formations, and oil seepages would also indicate the possibilities of locating oil and gas. The most promising prospect to date has been the lignite coal, and early this year drilling was started near the Blacksmith Rapids under the direction of Dr. W. S. Dyer for the Ontario Department of Mines. Very encouraging results have been obtained in this preliminary work, and so far it is reported that an area has been opened up which indicates an approximate tonnage of 60,000,000 tons."

"While the Temiskaming & Northern Ontario Railway is a small affair as compared with the great ocean-to-ocean lines, it "has impressed its individuality and success upon the Province to which it owes its inception, and is ever progressing and expanding toward greater endeavour and achievement." It is doing a great work in opening up a territory endowed by nature with immense wealth, and will have an important place in the story that will record the impressive development of the great North.

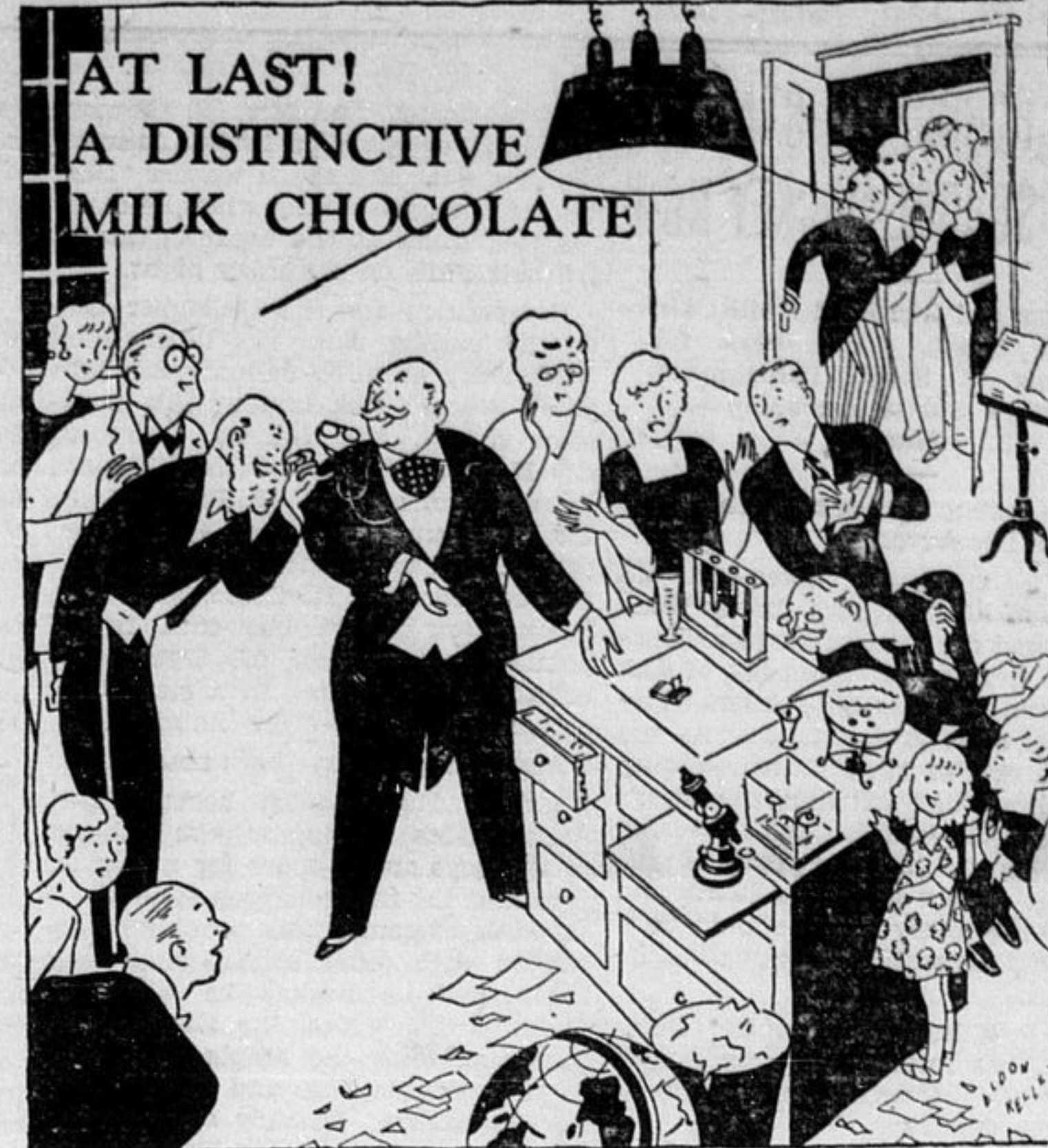
**C. W. GRAHAM COMPLETES 50 YEARS WITH BUNTIN-GILLIES**

The firm of Buntin-Gillies, of Hamilton, is widely known throughout the North Land, as well as in other parts of Ontario. This paper and stationery firm has won high place in the business world and as no concern is good without a good head, there will be general interest in the following reference to the head of the Buntin-Gillies firm, Mr. C. W. Graham, president for over 40 years. In a recent issue of The Hamilton Spectator there appeared the following mention of Mr. Graham:—

"Yesterday at the Royal Connaught Hotel, the executive and sales staff of Buntin-Gillies & Co. Limited, met at luncheon in honour of C. W. Graham, who has just completed fifty years of continuous service with the firm.

"During the luncheon a large, framed portrait of himself was presented to Mr. Graham and several nice speeches were made, congratulating him on the length of his service.

"Mr. Graham entered the employ of the firm on leaving school in November 1879. On the death of the late David Gillies in 1888, the management passed to Mr. Graham and, under his direction, has been carried on with the help of the able assistants, many of whom are also veterans. The average length of service of ten of these is 33 years. Buntin-Gillies was founded in 1848 and incorporated in 1903."

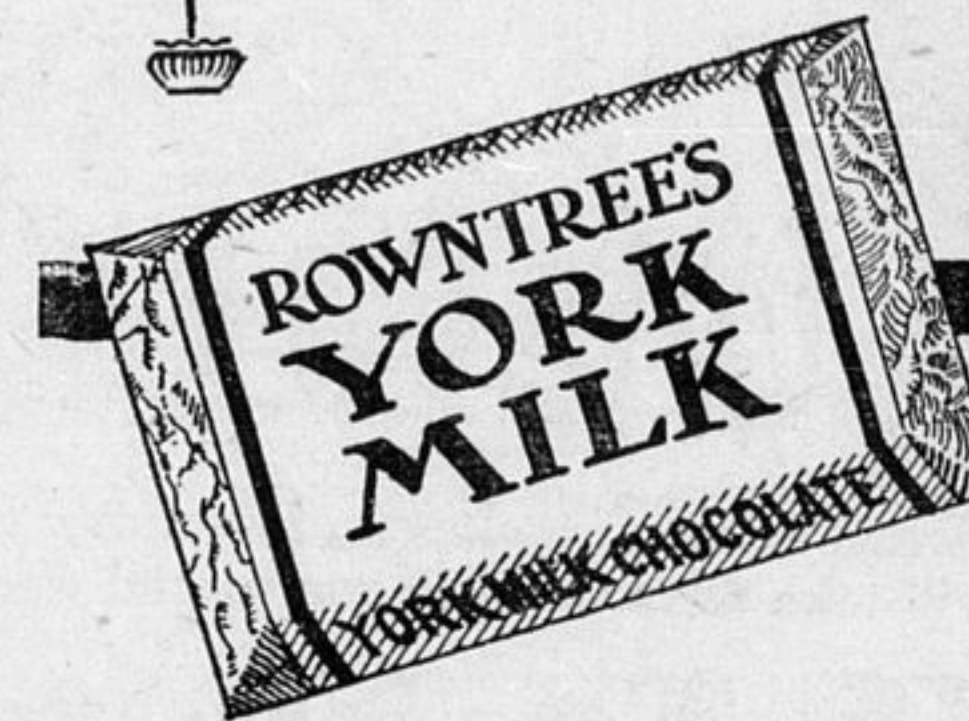


**AT LAST!  
A DISTINCTIVE  
MILK CHOCOLATE**

YOU can't bottle up a bit of news like that— Out through the corridors—out through the streets—spreads the story "a new Milk Chocolate Bar has been created—Rowntree's York Milk." It is so distinctive in its flavour, so satiny smooth, so utterly delicious that it marks a new standard of milk chocolate goodness.

Try it yourself. Test its perfect blended flavour. Notice how deliciously it melts smoothly away in your mouth. Mark how wholesome it is, how much you enjoy eating it.

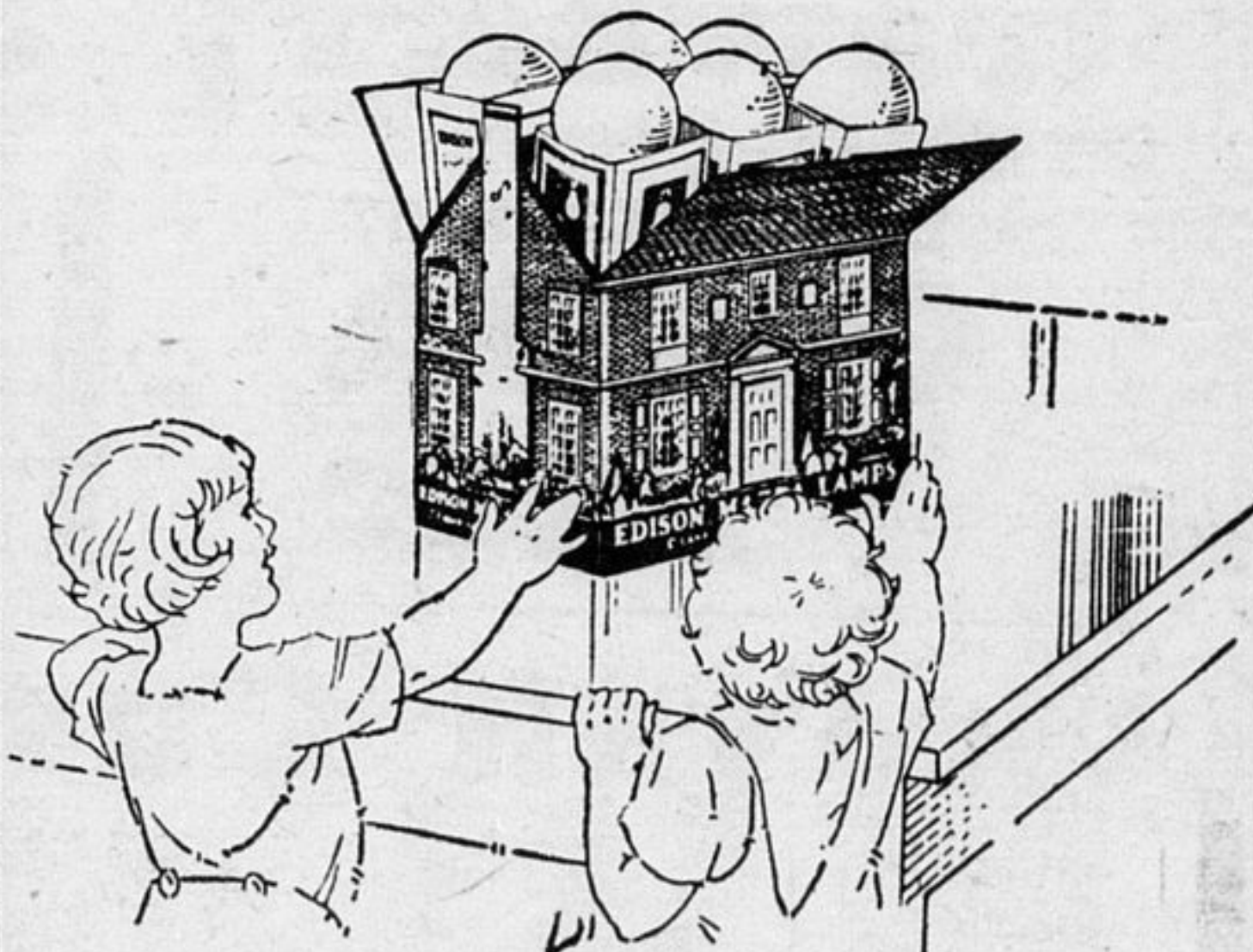
Be sure you ask for Rowntree's York Milk Chocolate—no other has just that perfect flavour.



There is also York Nut Milk—with delicious whole filberts—for those who prefer nut milk chocolate.

5c

THE ROWNTREE CO. LIMITED, TORONTO



A delightful toy for the kiddies...

6 Genuine Mazda Lamps for YOU!

for only \$1.45

Take advantage of the new low price now in effect and put in a stock of lamps. Each toy house carton contains 6 lamps ranging from 15 to 60 watts. Buy one and please the kiddies besides insuring yourself against the inconvenience of empty lamp sockets.

Canada Northern Power Corporation, Limited

Controlling and Operating

NORTHERN ONTARIO POWER COMPANY LIMITED  
NORTHERN QUEBEC POWER COMPANY LIMITED  
GREAT NORTHERN POWER CORPORATION LIMITED