

## CAN MAKE FIVE TONS OF ARTIFICIAL ICE PER DAY

15 Tons of Refrigeration Daily at Fine New Plant of S. D. Eplett & Sons in Timmins.

Two and a half tons of artificial ice are being made each day at the new plant of S. D. Eplett & Sons, Timmins. The capacity of the plant is five tons per day. The making of artificial ice is simply a side-line, the chief business, of course, being the manufacturing of the well-known Eplett Ice Cream. It is interesting to note that the plant produces a total of fifteen tons of refrigeration per day,—for artificial ice, for cooling milk, for making ice cream, etc. For years S. D. Eplett & Son have

been widely known in the North Land for their modern and well-conducted factory at New Liskeard, where ice cream of the best quality was made, and where a general dairy business was carried on. Last year the firm decided to open up business in Timmins, being impressed by the phenomenal growth of this town, and the apparent need for a service such as their experience and knowledge could provide in the line of high-grade-ice-cream and dairy products. The erection of a large and modern tile building was commenced in Moneta Township, just south of the athletic grounds. This building is at the present practically completed and machinery and equipment installed.

The building is a large one, up-to-date in every respect and with an exceptionally efficient equipment. The building is two storeys high, with a fine big basement. Solid cement pil-

## Does Your Child Show These Symptoms?

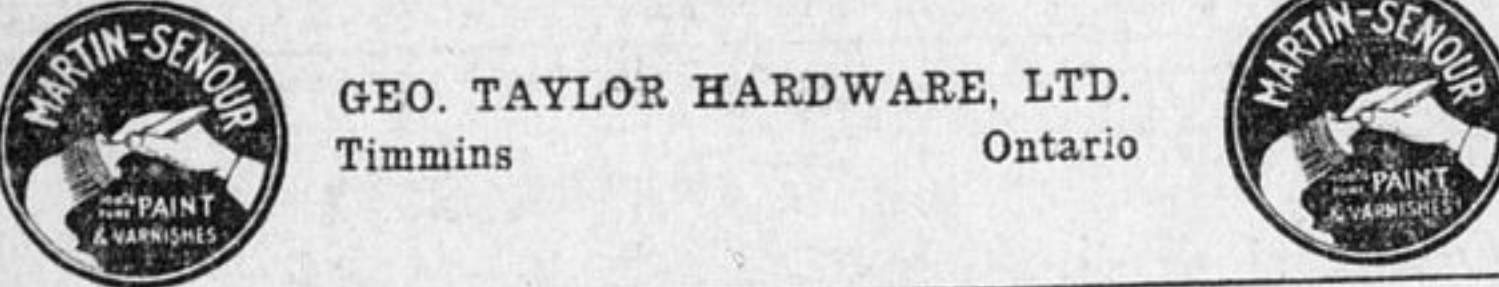
Often perfectly healthy children will, for no apparent reason, suddenly lose their appetite, become tired and listless, pale, and take no interest in games or sports. Often the child has a dry cough. If neglected too long, these symptoms may develop into anemia or consumption. When a child shows signs of becoming run down, its system should immediately be built up with a tonic. Dorothy Oliver developed symptoms similar to those described above, and in the following letter Mrs. Oliver tells how the child was restored to health.

"My little girl Dorothy, seven years of age, was much run down, suffering from loss of appetite. She was tired and nervous. She was losing flesh and becoming thin. This had been going on for over three years. I had tried several remedies without effect. Finally I got a bottle of Carnol and almost immediately I noticed an improvement. She gained 100 per cent. in strength and flesh. Today she is again the rosy-cheeked child she used to be. She is now full of life, health and vitality. I therefore can conscientiously recommend Carnol as a builder and appetizer."—Mrs. O. S. Oliver, 648 Beverly St., Winnipeg.

Carnol is sold by all good druggists everywhere.

## It pays to use MARTIN-SENOUR WOOD-LAC STAIN for Furniture-Floors & Woodwork

Write to Head Office, Montreal for Free Booklet HOME PAINTING MADE EASY



GEO. TAYLOR HARDWARE, LTD. Timmins Ontario

### NOTICE

NOTICE is hereby given that a By-Law was passed by the Council of the Corporation of the Town of Timmins on the 24th day of March, 1924, providing for the borrowing of Forty Thousand Dollars upon debentures to pay for the erection of a new addition to the existing Central Public School in the said Town and that such By-Law was registered in the Registry Office of Land Titles, Haileybury in the District of Cochrane, on the 26th day of March, 1924.

Any motion to quash or set aside the same or any part thereof must be made within three months after the first publication of this notice and cannot be made thereafter.

Dated this 2nd day of April, A.D., 1924.

H. E. MONTGOMERY, Town Clerk.

With the Cream Left In!  
Ready when you need it

Free Recipe Book—Write the Borden Co. Limited, Montreal.

lars support the floors throughout, the basement posts being fully four feet below ground, and the structure being of unusually solid type and of practically fire-proof construction. The ceilings throughout are high, eleven-footers, and ventilation is of the most approved kind. Through the factory part of the building the floors are all of finely-finished cement.

In the basement will be found the boiler room, storage rooms for coal and wood, etc. The boiler equipment is most complete, including many unusual modern features.

On the main floor there is a small office for the use of the manager. Then comes the refrigerating rooms, the washing rooms, the ice and ice-cream making rooms, all very completely equipped and sanitary and modern in every way. The equipment includes an automatic boiler for sterilizing bottles,—a very ingenious and sure method. By the electric machine in use 5000 bottles may be washed per day. In front of the big refrigerator room are two small ante rooms,—the idea of this being to further add to the efficiency of the big refrigerator room. Practically everything is done by machinery and the machinery for ensuring even temperature, and any temperature desired,

is probably the best of the modern systems. The making of artificial ice, the refrigeration necessary for cooling the milk and making the ice cream, all depend on a refrigeration system based on the use of a temperature-reducing solution. The Eplett system is most complete and effective. As soon as the factory is running full force, hours for visitors will be arranged, and no doubt many will be interested in the ingenious machinery and methods in use, and the high standards of purity and sanitation maintained.

Upstairs on the second storey there are offices for the staff, together with toilet, etc., all very pleasantly appointed and equipped. There is also an attractive suite of apartments for the manager, with bath, etc., and all modern conveniences and equipment. Mr. Sam G. Eplett is in charge of the business here.

### SPECIAL EASTER SERVICES OF SALVATION ARMY

Special Easter Services will be conducted by the Divisional Commanders from North Bay, Major and Mrs. F. H. Knight, during the week-end. There will be special services with special music and other special attractions on Saturday evening: Sunday at 11 a.m., 2:30 p.m., and 7:00 p.m.; and Monday at 8 p.m. The service on Monday evening will be a special programme of music and song. Everybody is invited to attend the services, and to bring a friend along.

(Last week The Advance made a special plan for a regular campaign of tree planting in Timmins. The Sault Ste. Marie Rotary Club goes one better, or at least bigger. The Rotarians have inaugurated a drive to extend the "Road of Remembrance" farther east from Sault Ste. Marie and are urging other municipalities to take up the plan, with the idea that in a short time the highway from Sault Ste. Marie right through to Toronto may boast of a continuous row of shade trees.)

## Will There Be Music in Your Home for Easter?

### Why Not Decide on That Phonograph Now?

McLagan, Brunswick and Columbia Phonographs sold on easy terms or for cash.

Six Double-Sided Records [12 Selections] FREE

Special Records for Easter on

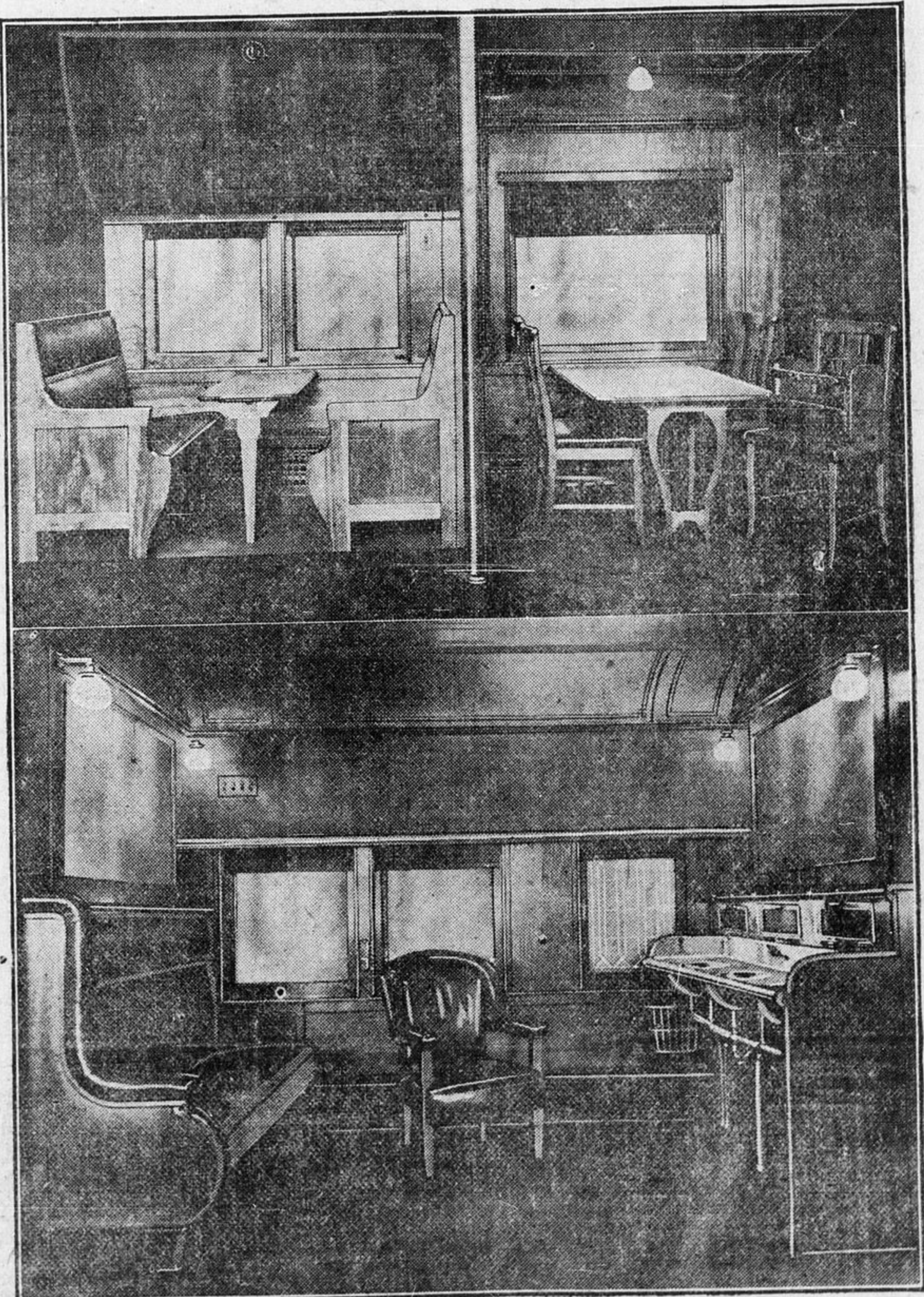
Columbia, Brunswick and Apex Records. Call and hear them any-time at

Ivan Stadelman's

MUSIC & BOOK STORE

72 Pine St. OPPOSITE BURKE'S DRUG STORE Timmins

## Canadian National Railways at Wembley Exhibition



At the British Empire Exhibition opening in April at Wembley, England, the Canadian National Railways will, in their own buildings on the grounds, maintain one of the finest transportation exhibits ever shown. Practically every phase of steam transportation in Canada will be shown, including the history of steam transportation by means of a series of mural decorations in bas-relief. Mechanically operated apparatus will give a vivid illustration of some of the Dominion's great scenic attractions and a huge trophy in the centre of the building will indicate to the visitors some idea of the wealth of Canada's natural resources.

One of the most interesting sections of the exhibit will be life-size models of sections of equipment used by the

Canadian National Railways for passenger traffic. There will be a section of a colonist car, a tourist car, a dining car, sleeping car with wash room and smoker, a section showing a compartment and another a drawing room. In charge of this exhibit will be a conductor and porter chosen from the service, and they will explain to visitors the method of passenger travel in the Dominion.

The photographs show three portions of this exhibit. In the upper left-hand corner is seen a section of a tourist car and opposite it a section of a standard diner. On the chair in the right-hand corner is a special seat for a child. Below is seen the gentlemen's smoking and wash room on a standard sleeping car.

# THE TURNING POINT

A MUSICAL, COMEDY—DRAMA

Auspices and Benefit of Timmins Fire Department

A Beautiful Story Charming Gowns Special Scenery Electrical Effects Catchy Music

NEW EMPIRE THEATRE, TIMMINS

on Wed. & Thurs., April 23 & 24  
MATINEE THURSDAY AT 4 P.M.

This Play had a two years run on Broadway, and will be produced with a special selected cast here. Buy your tickets now and help your favourite lady win the \$100.00 in Gold

Admission, Nights - \$1.50 and \$1.00  
Matinee - \$1.00 - - Children 25c.