

This will give you a grasp of financial and business conditions



"INVESTMENT ITEMS" is a complete review of Canadian investment and business conditions, and commodity markets, written by leading authorities on each subject. This month's issue contains a striking article on the Sulphite Pulp Industry and every owner of pulp and paper securities should read it.

MANY leading papers quote from every issue.

YOU will profit in your Investment affairs and your own business by reading it.

SEND your name and address now, and we will forward you a copy.

Royal Securities Corporation, Limited
244 Bay Street, Toronto

Montreal - Halifax - St. John - Winnipeg - Vancouver - New York - London

COULOMBE & BRUNELLE

Have opened a

VEHICLE REPAIR SHOP

in Shankman Bros. old store, Timmins.

Your wagon, express and buggy needs repairing and painting. Don't put it off till you are too busy. And don't wait until you have a break down. Do it now. We guarantee you better value for your money.

Also Dealers in Farm Implement

A GIFT BEYOND VALUE

BILLIE BROWNE

Timmins Only Photographer

Address—"Pills and Things" Phone 337

REMOVAL NOTICE

Sullivan & Newton, Insurance and Real Estate, have moved their offices to the new Marshall-Ecclestone Block.

SULLIVAN & NEWTON

Insurance and Real Estate

3 MARSHALL-ECCLESTONE BLOCK. (Upstairs)

Chas. Pierce & Sons Limited

General Merchants

Timmins - Ontario

Building Material

Dressed and Rough Lumber

Beaver Board, Nails, Roofing Paper

Large Stock Always Carried on Hand

Phones: Store 28a Warehouse 113

H. G. Holmes

Dealer in

Lumber, Stulls and Lagging

Wholesale and Retail

Hay, Oats, Flour and Feed

Carlots a Specialty

Office and Warehouse, Mattagami Road, Timmins

Call, Phone or Write. Prompt attention to all orders
Phone 54B

THE PORCUPINE AS IT APPEARS TO H. S. PUPILS

(Continued from page 6)

brought into prominence, such as the Foley-O'Brien and the Rea. In the next two years great progress was made.

In the year 1914 the first Dog Race was held and since then this has been an annual event.

In 1914 also, there happened the worst possible thing for the Camp, the Great War. It made supplies scarce and it took the best men out of our Camp. The mines were compelled to run on a much smaller scale and in later years it accounted for the great percentage of aliens in our camp.

During the years 1910-12 there had grown up a small town, named Timmins, after a family which then resided here. It is only one mile from the Hollinger, and as the Hollinger increased in importance it did also.

In the year 1916 there occurred another fire which only touched the Porcupine district slightly. However, it did much damage between here and Cobalt.

As Timmins increased in importance, Golden City and South Porcupine decreased until now they are merely summer resorts of Timmins.

In the year 1919, His Highness the Prince of Wales visited the Camp and pronounced it a very promising one.

About three-quarters of a mile from Timmins flows the Mattagami River. By it you can reach Sandy Falls and Wawatim Falls, from which the mines receive all their waterpower.

The Town of Timmins at the present time is governed by a Mayor and Council.

The Masons were organized here in 1912 and the Oddfellows, Knights of Columbus and other lodges quickly followed. There are also the Boy Scouts and the Girl Guides. Among the ladies' societies are the Red Cross and the Imperial Order of the Daughters of the Empire.

The churches are all well represented, the Presbyterian, Anglican, Baptist and the new one hundred thousand dollar Roman Catholic Church.

Timmins to-day is considering the annexation of Moneta and Rochester, also Mattagami. If this is done, Timmins will be a city.

At the present time the Hollinger is considered the greatest producing gold mine of the world, and I am sure that the Porcupine Camp has a great history yet to come.

THIRD PRIZE

By Roy Hardy.

Canada is steadily increasing in her production of gold. Among her numerous gold mining districts Porcupine is one of the chief.

As far back as 1896, before Cobalt came into existence, a few prospectors and wandering Indians knew of the occurrence of gold in the Porcupine, which was then the northern and practically unexplored portion of the District of Sudbury.

At intervals during the following years a few surveyors reported the discovery of that precious metal. It was not, however, until the failure of the Larder Lake Gold Rush in 1907, that Porcupine was taken seriously by mining men and capitalists.

The only means of reaching this district was by canoe and portage through forty-five miles of forest. The starting place of this journey was at Matheson, and later at Kelso or Mileage 222.

Over this trail the dauntless prospectors made their way, seeking fame and fortune. At the eastern end of Porcupine Lake, a number of huts were built which later developed into the Town of Porcupine. Porcupine, or "Golden City," as many of the prospectors called it, became a town of stores, banks, dwellings and hotels and a post office. Owing to the rush for the recording of claims, a Recorder's office was opened.

Most of the stakings had been in the Townships of Whitney and Shaw, but discoveries were soon made in the Township of Tisdale and around Mattagami River. In October, 1909, Benjamin Hollinger and a number of other prospectors staked claims around Miller and Gillies Lakes. These claims afterwards became the famous Hollinger Mines.

The Government extended the railway to South Porcupine bringing the line of steel within six miles of the Town of Timmins. Owing to the fact that the claims were rich and many people were coming into the district, the district was progressing well and they expected to have a stamp mill on the Hollinger property by July, 1911.

The year 1911 was a disastrous one, however. Forest fires swept this district destroying life and property, including the new stamp mill. After the fire, operations were pushed on and two saw mills were erected to produce lumber for the mine buildings.

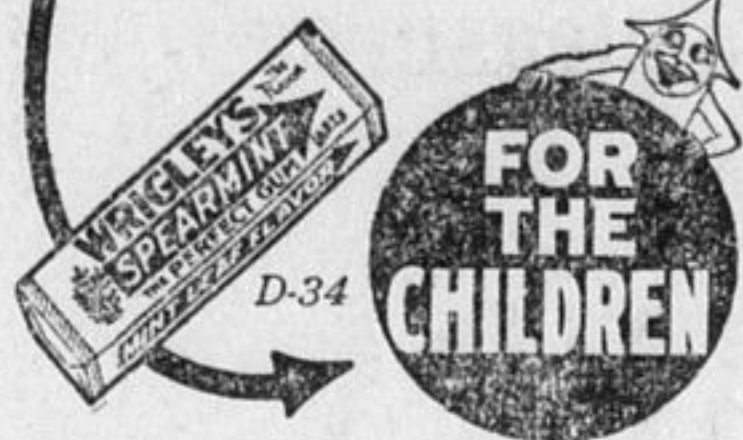
In the year 1912 the mining men went on strike which stopped oper-

After Every Meal
WRIGLEYS

Top off each meal with a bit of sweet in the form of WRIGLEY'S.

It satisfies the sweet tooth and aids digestion.

Pleasure and benefit combined.



ations for a time. The same year the railway was extended to Timmins.

The district was pushing on rapidly when the Great War broke out. Porcupine responded gallantly to the call to arms. The 228th Regiment consisted mostly of Porcupine men. There was great rejoicing in the Camp when the war came to an end.

Another disastrous fire swept Porcupine in the year 1916, but Timmins escaped with very little loss of life and property.

H.R.H. the Prince of Wales honoured Timmins by a visit in the year 1919 and last year Lieutenant-Governor Cockshutt visited Timmins. Each year brings important bodies of men to this town.

Very little remains of Golden City and South Porcupine, many of the people moving into Timmins, as there was nothing to keep up these two towns.

Timmins is an incorporated town having a Mayor and six Councillors. It has concrete sidewalks, electrical power which is supplied from Sandy Falls, and waterworks. There are four churches, many up-to-date hotels and banks.

The school children have the advantage of having both Public and Separate Schools and a High School. The Hollinger Mine erected three hundred and fifty houses for her employees.

There are also many fine brick buildings being erected.

This brings Porcupine to the present day. The Dome, Hollinger and McIntyre mines are just beginning to be developed, and as other mines which will be great producers, such as the Night Hawk Lake Peninsular Mine, are being opened up, the future of Porcupine is great.

New and Second-Hand Goods

We sell good goods cheap but pay the best prices when buying from you. If you want to buy anything in Furniture, Stoves, Beds, Mattresses, Etc., you will get good bargains here. If you want to sell, we'll treat you right.

Nathan Greenberg

60 Balsam St. - P.O. Box 962

HAVE YOUR HOUSE RID OF COCKROACHES, Bugs and all other kinds of vermin.

Contracts taken for this, and satisfaction guaranteed. Hundreds of people have been delighted with my service. References. Apply to A. Coter, 49 Hollinger Lane, Mattagami, or send postcard to Box 465, Timmins, Ont. 45-49p.

IROQUOIS FALLS. PARIS HOTEL

Now open for business. First-class rooms, and steam heated. All up-to-date conveniences. Reading and Sitting Rooms. Sample Rooms for Travellers. Best dining room in town. Meals at all hours.

FOR SALE.

Fire Wood in any lengths to suit, from 14 inches to wood in log. Dry and green Jackpine. Prices very reasonable. Order your wood now before the rush.

H. CHARLEBOIS,

Phone 347. - 30 Cedar St., Timmins.

Come to P. Antoine's

39 FOURTH AVENUE
OPPOSITE FIRE HALL

Pleasure Ice Cream Parlour

Here you will find anything you wish in Ice Cream, Soft Drinks, Candies, Fruits, Wines, Tobaccos, Cigars, Cigarettes Stationery, Novelties, Jewelry, Etc.

LUMBER FOR SALE

ROUGH LUMBER

Also 7/8 x 4 inch Soft Wood Flooring and V-Joint, Shiplap, Etc. Lumber Dressed to Order

Double Diamond Lumber Co., Limited
MATTAGAMI HEIGHTS

For anything in Watches, Clocks, Silverware, Chinaware, Crown Derby, Cut Glass, Etc., it will pay you to come to

H. HORWITZ

25 Third Ave.,

Between the Hollinger Stores

Watch and Jewelry Repairing Promptly and Efficiently Attended to.

Northern Furniture Exchange

We buy, sell and exchange. We pay the highest prices for new and used furniture. If you have anything to sell call at No. 9 Spruce St. or Phone 303. We assure you prompt service and perfect satisfaction.

Northern Furniture Exchange

M. J. BROVENDER, PROPRIETOR

9 SPRUCE ST. Opp. Freight Shed. TIMMINS

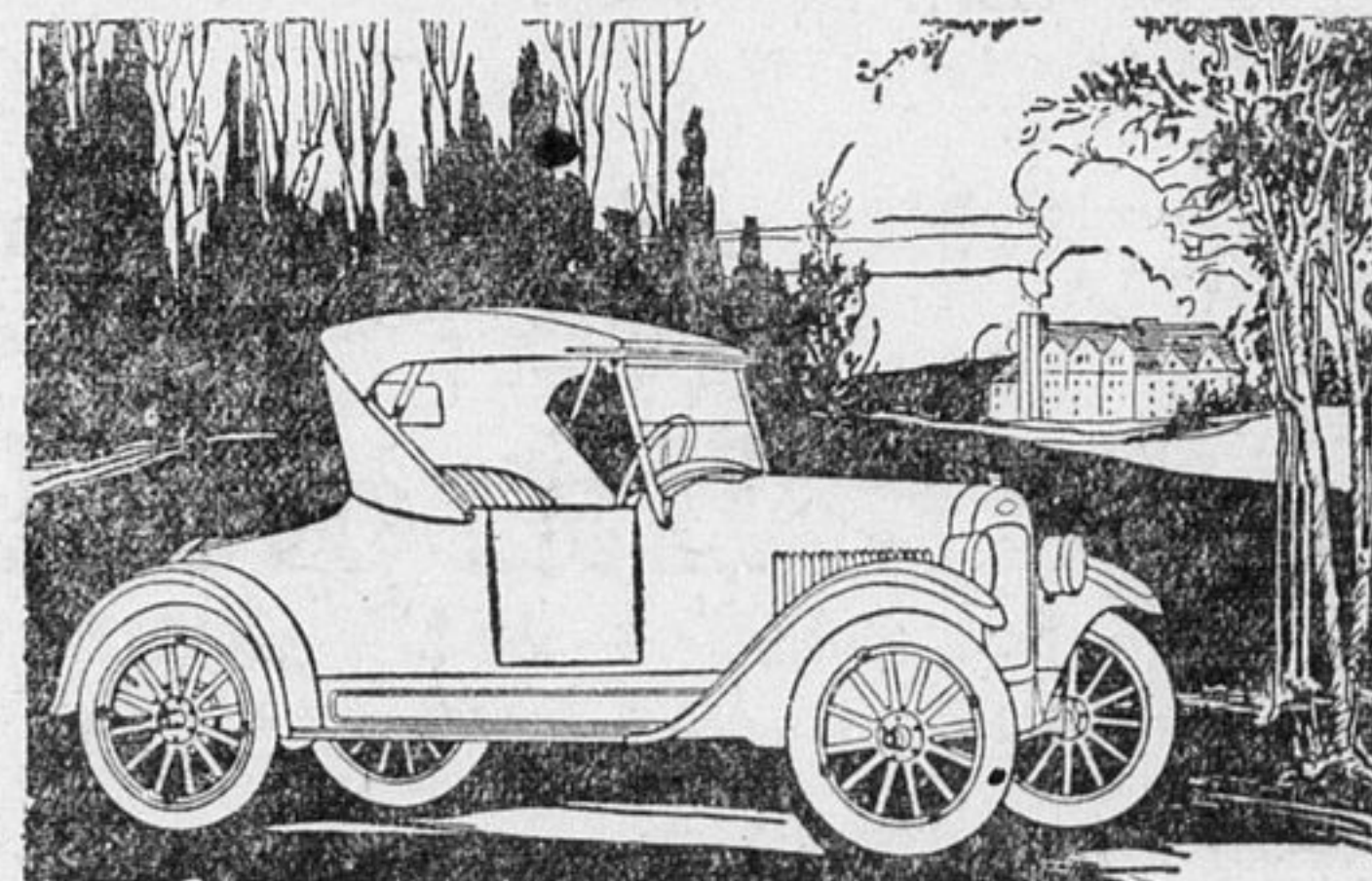
Arthur E. Moysey & Co. Limited

Stocks and Bonds

TIMMINS - ONTARIO

DAY 100 PHONES NIGHT 172

Enquiries on Gold Stocks Invited



Why Chevrolet Can Give You Such Extraordinary Value

LARGE scale production—big sales volume! That's why Chevrolet can give you such extraordinary value—why you can buy a fully equipped quality automobile at such a surprisingly low price.

Chevrolet is the world's largest producer of quality automobiles. Savings in cost of material, production, distribution and overhead are passed on to Chevrolet buyers in the form of greater car value. Chevrolet's growth in sales volume proves that Chevrolet cars make good in service and represent today's greatest motor car value per dollar of cost. Lowest in first cost, these cars also cost less to operate than any other cars built.

See Chevrolet first.

In the line of SUPERIOR Chevrolet models, there is one which will exactly meet your requirements.

Ask About the G.M.A.C. Plan of Deferred Payments.

THE NORTHLAND MOTOR SALES CO.

Phone 293

Timmins, Ont.

