



## Endow Your Home!

COLLEGES are endowed. Schools are endowed. Hospitals are endowed. Why? So as to relieve anxiety for their future.

Why don't you endow your own home and relieve your anxiety for its future? Have you a mortgage coming due in a few years? Do you plan to spend money "some day" on enlargements, renewals, alterations or repairs? Your ordinary expenses will be no lighter, probably, five, ten or fifteen years from now than they are to-day. You need a special endowment fund.

If you will fill in the coupon below we will send you full information about Mutual Life profit-participating endowment policies by return mail, and show you how to endow your home and protect your family at the same time. Mail this coupon to-day.

### THE MUTUAL LIFE of Canada: Waterloo, Ontario

Clip this Coupon and Mail To-Day

Please send me detailed information about Mutual Life insurance at cost, and particularly about the plan of policy I have specified below.

Name \_\_\_\_\_  
 Address \_\_\_\_\_  
 Post Office \_\_\_\_\_ Province \_\_\_\_\_  
 Policy Plan \_\_\_\_\_ Age \_\_\_\_\_

## SEEDING PASTURE IN NORTHERN ONTARIO

Red Clover, Alsike and White Dutch Clover Grow Like Weeds in The North.

Mr. J. P. S. Ballantyne, Superintendent of the Experimental Station at Kapuskasing, Ont., last week sent The Advance the following article. While Mr. Ballantyne is writing particularly with the Kapuskasing area and the district east and west in view his article applies with equal force to other sections of the North Land where the soil is of the famous "Clay Belt" type. Much of the land in the immediate vicinity of Timmins has an overburden of sandy loam, but is good growing land. There are also large stretches of the regular North Land clay belt land. The article by Mr. Ballantyne is as follows:—

The settler in Northern Ontario is early faced by the problem of pasture for his stock, as there is no vegetation when the timber from the virgin forest is removed. But it need not take long to get abundance of pasture, when once the necessary clearing is done; red clover, alsike and white Dutch clover grow like weeds in the north, and if seed is sown at the proper time there will soon be all the pasture required.

As the soil at the Experimental Station is representative of that found east and west of it, the method of seeding used here should be suitable under most conditions in the clay belt. When the timber has been removed and a good burn got over the slash it is usual at the Station to sow broadcast, directly the snow is down enough in the spring, the following mixture: Red clover, 4 lb; alsike, 2 lb; white Dutch clover, 1 lb; and timothy, 2 lb. per acre.

This is not heavy seeding; but subsequent annual reseeding takes place from the parent plants, and it is not long before the ground is covered with a mass of clover and timothy which continues to mature seed. Thus the pastures are of a permanent nature. Red clover shows perennialism very strongly here; pastures that were seeded in 1918 being still 100 per cent red clover, so dense last year that the stock could not eat it down. The clover pastures in the north serve a double purpose, furnishing livestock with an abundance of grass and building up the fertility of the soil.

A great difference in the productivity of the soil has been observed when it was seeded to pasture for three or four years, compared with when the virgin soil was broken up. The cost of seeding is not high, and soon pays for itself in pasture for the stock.

Several mixtures of grass were tried out at this Station in stump pastures, but the best results were obtained from the above mentioned. Clover is one of the best forage crops grown, and is well adapted to this climate.

There is room for thousands of cattle in Northern Ontario as soon as the pasture to feed them is seeded; and it should not be long before stock can be brought in and fattened, and sold off the grass for the markets.

"WHAT YOU WANT, WHEN YOU WANT IT,"—ADVANCE ADVT.

Last week Mr. D. St. Onge asked to have his want advt. discontinued in The Advance. "I want to stop the crowds coming to see me about renting that house," says Mr. St. Onge.

Mr. A. Prout also warned The Advance not to run his advt. a second time. "I just want the one girl," he said, "not a dozen or more."

FAR-AWAY FIELDS ARE NOT SO GREEN AS THEY LOOK

Some weeks ago The Advance referred to the mistake made by some in flying to distant points because the hills look green from far away. Sometimes, the green is all in your eye. Why, they are even finding out this idea in Toronto. An issue of The Toronto Star last week said:—

"In view of the number of Canadian workmen who are unemployed and are anticipating going to the United States to better their condition, the following letter received by The Star from a former member of a Toronto firm, who is on the other side, may be of interest:

"I hope you will excuse me taking liberty of writing to you at this time. Now, as you see by address, I am a little way from Toronto.

"I came on here from Detroit. Work here is very plentiful and wages good, but board and lodging are very high. I am paying \$6 per week for room, and then to eat in restaurants, which I find is still higher, takes all the good there is in the job. I think if you can see your way clear to give me a chance and place me in your service your action will be fully appreciated by me."

Business is like an aeroplane—to stop is to drop.



**INVESTMENT ITEMS**

ROYAL SECURITIES CORPORATION, LIMITED

244 BAY STREET TORONTO

YOU will profit in your investment affairs and your own business by reading it.

"INVESTMENT ITEMS" is a complete review of Canadian investment and business conditions, and commodity markets, written by leading authorities on each subject.

THIS month's issue contains a striking article on the Canadian Sulphite Pulp Industry. Every owner of pulp and paper securities should read it.

SEND your name and address now and we will forward you the latest issue. Write now—

**Royal Securities Corporation, Limited**  
 244 Bay Street  
 TORONTO

### DIAMOND DRILLING TO BE DONE ON PORCUPINE KEORA

At the recent annual meeting of the Porcupine Keora, the shareholders ratified the by-law increasing the capital from \$2,000,000 to \$3,000,000. The new stock is said to be underwritten already, and it is understood that an extensive diamond drilling campaign will be carried on to explore the possibilities of the property. Mr. J. B. Tyrell, one of the leading consulting engineers of Canada, has been retained as consulting engineer for the Keora, and will supervise the work to be done on the property. The Keora owns 120 acres in the northern part of Whitney Township, and also owns two million shares of South Keora Mines Limited. In this section of the Porcupine there is much promising activity at the present time, work being in progress on properties not far from the Keora. At the Porcupine Grande, east of the Keora, there are 30 men at work. At the Scottish Ontario and other properties in the district work is also under way with very pleasing results so far.

### New and Second-Hand Goods

We sell good goods cheap but pay the best prices when buying from you. If you want to buy anything in Furniture, Stoves, Beds, Mattresses, Etc., you will get good bargains here. If you want to sell, we'll treat you right.

**Nathan Greenberg**  
 60 Balsam St. - P.O. Box 962

HAVE YOUR HOUSE RID OF COCKROACHES. Bugs and all other kinds of vermin. Contracts taken for this, and satisfaction guaranteed. Hundreds of people have been delighted with my service. References. Apply to A. Coter, 49 Hollinger Lane, Mattagami, or send postcard to Box 465, Timmins, Ont. 45-49p.

### IROQUOIS FALLS. PARIS HOTEL

Now open for business. First-class rooms, and steam heated. All up-to-date conveniences. Reading and Sitting Rooms. Sample Room for Travellers. Best dining room in town. Meals at all hours.

### FOR SALE.

Fire Wood in any lengths to suit, from 14 inches to wood in log. Dry and green Jackpine. Prices very reasonable. Order your wood now before the rush.

-33 H. CHARLEBOIS,  
 Phone 347. - 30 Cedar St., Timmins.

### Come to P. Antoine's

39 FOURTH AVENUE  
 OPPOSITE FIRE HALL

### Pleasure Ice Cream Parlour

Here you will find anything you wish in Ice Cream, Soft Drinks, Candies, Fruits, Wines, Tobaccos, Cigars, Cigarettes Stationery, Novelties, Jewelry, Etc.

## LUMBER FOR SALE

ROUGH LUMBER

Also 7/8 x 4 inch Soft Wood Flooring and V-Joint, Shiplap, Etc. Lumber Dressed to Order

**Double Diamond Lumber Co., Limited**  
 MATTAGAMI HEIGHTS

For anything in Watches, Clocks, Silverware, Chinaware, Crown Derby, Cut Glass, Etc., it will pay you to come to

**H. HORWITZ**

25 Third Ave., Between the Hollinger Stores

**Watch and Jewelry Repairing Promptly and Efficiently Attended to.**

## Northern Furniture Exchange

We buy, sell and exchange. We pay the highest prices for new and used furniture. If you have anything to sell call at No. 9 Spruce St. or Phone 303. We assure you prompt service and perfect satisfaction.

## Northern Furniture Exchange

M. J. BROVENDER, PROPRIETOR  
 9 SPRUCE ST. Opp. Freight Shed. TIMMINS

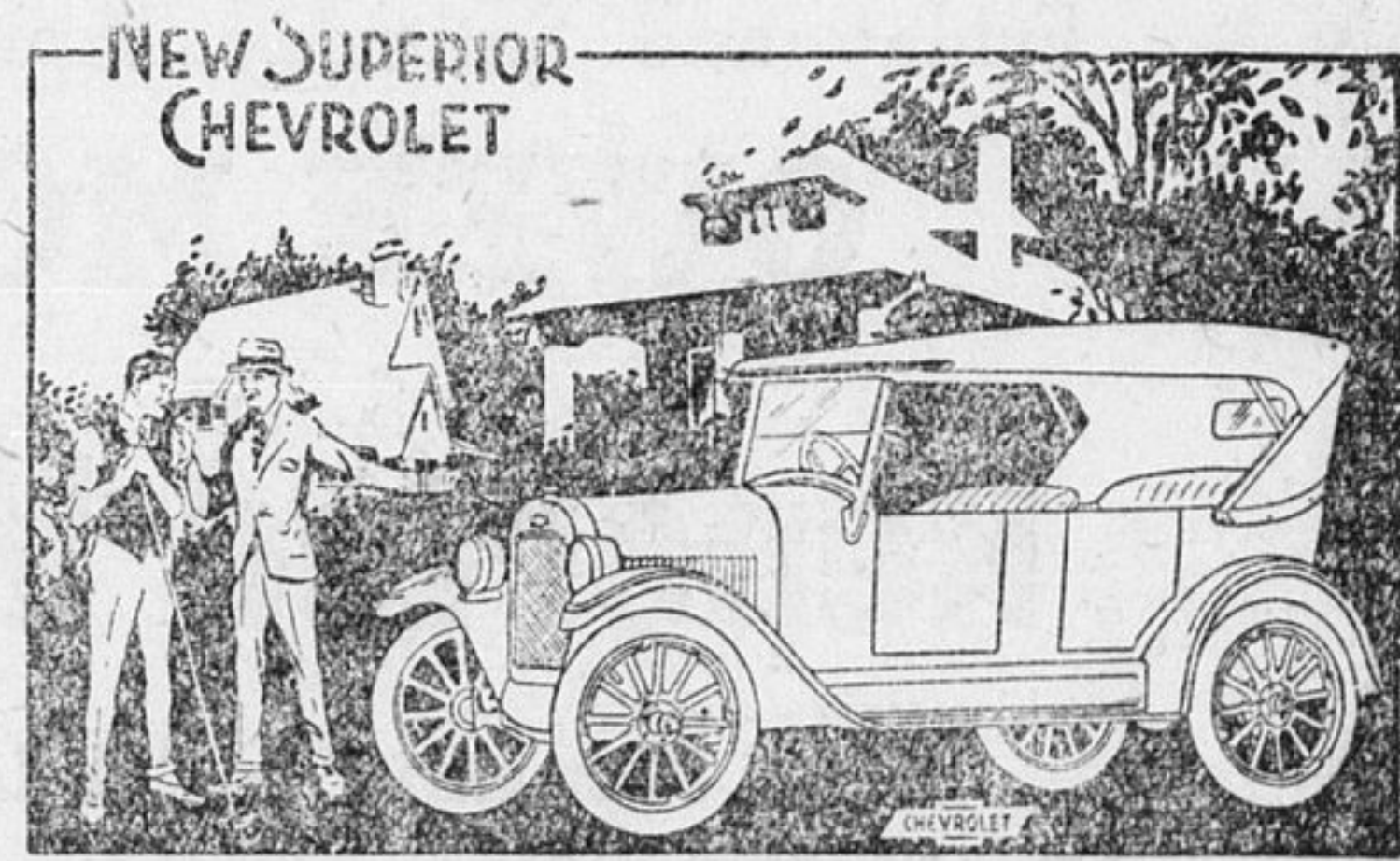
## Arthur E. Moysey & Co. Limited

Stocks and Bonds

TIMMINS - ONTARIO

DAY 100 PHONES NIGHT 172

Enquiries on Gold Stocks Invited



**IT HAS EVERYTHING**  
 LOOKS-FINISH-POWER-COMFORT-ECONOMY  
 A COMPLETE CAR-NO EXTRAS TO BUY

THE new SUPERIOR Chevrolet answers the ever increasing demand for a completely equipped quality car furnishing comfortable and reliable transportation at a cost lower than that furnished by any other make of car in the world. Sixty-seven new improvements in the Chevrolet make it more than ever the world's greatest motor car value. See the new Chevrolet, ride in it, drive it yourself, then compare it point by point with any other car.

Some distinctive features of Chevrolet are: streamline body design with high hood; vacuum feed and rear gasoline tank on all models; drum type headlamps with legal lenses; curtains opening with doors on all open models; all closed bodies Fisher-built with Ternstedt window regulators, sun visor, windshield wiper and dash light. The Touring Coupe is equipped with auto trunk on rear.

Ask About the G.M.A.C. Plan of Deferred Payments.

**THE NORTHLAND MOTOR SALES CO.**  
 Phone 293 Timmins, Ont.



## COULOMBE & BRUNELLE

Have opened a **VEHICLE REPAIR SHOP** in Shankman Bros. old store, Timmins. Your wagon, express and buggy needs repairing and painting. Don't put it off till you are too busy. And don't wait until you have a break down. Do it now. We guarantee you better value for your money. Also Dealers in Farm Implement

## BLUEBIRD CAFE

(Opposite the Goldfields)  
 Under the management of Miss Alice Gratton.  
**Specialty of putting up Miners' Lunches**  
 First-class Meals. Best of Service. Everything clean and neat.  
 Home-made pastry made to order

## Chas. Pierce & Sons Limited

General Merchants  
 Timmins - Ontario

**Building Material**  
 Dressed and Rough Lumber  
 Beaver Board, Nails, Roofing Paper  
 Large Stock Always Carried on Hand

Phones: Store 28a Warehouse 113

## H. G. Holmes

Dealer in **Lumber, Stulls and Lagging**  
 Wholesale and Retail  
**Hay, Oats, Flour and Feed**  
 Carlots a Specialty

Office and Warehouse, Mattagami Road, Timmins

Call, Phone or Write. Prompt attention to all orders  
 Phone 54B