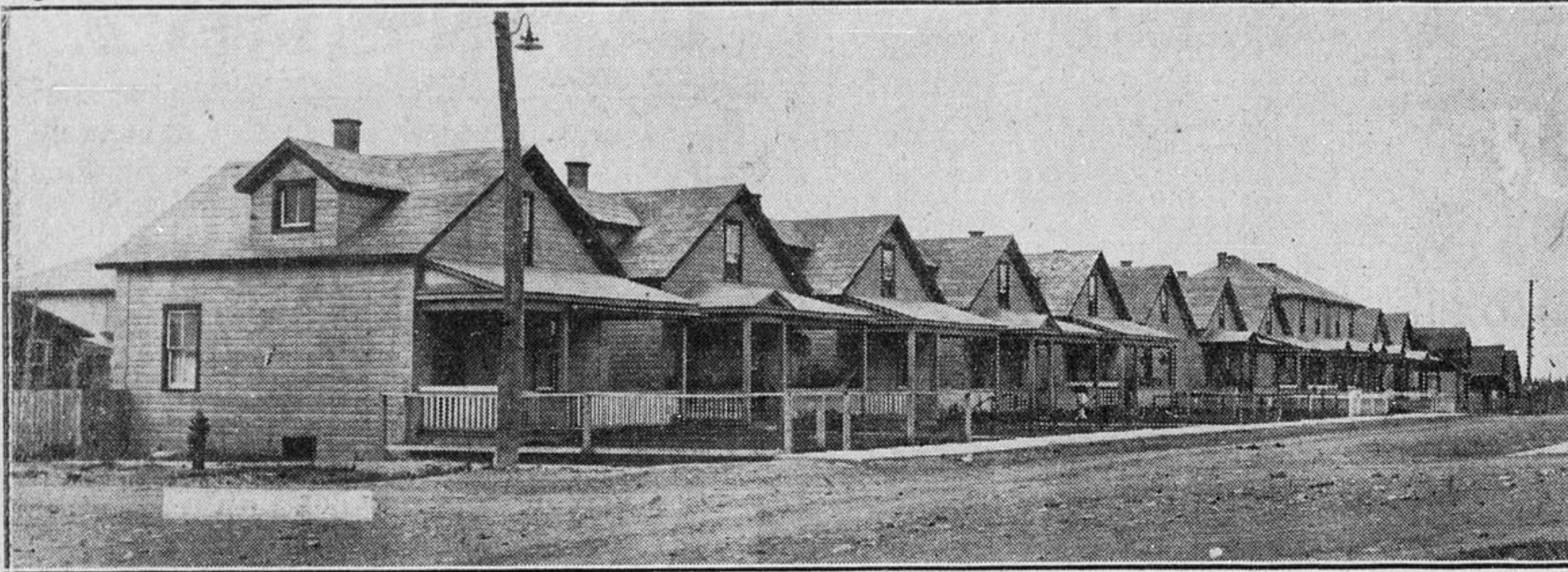
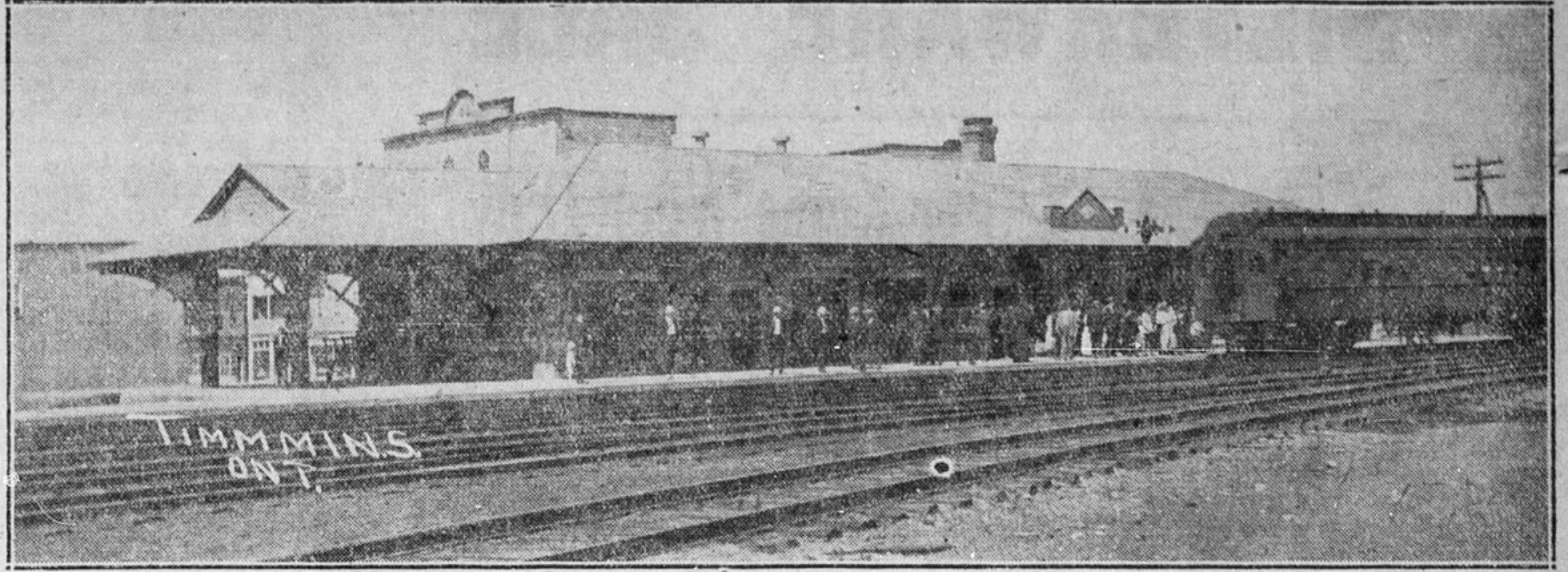


A PAGE OF PORCUPINE PICTURES

T. & N.O. Railway Depot at Timmins

Where all the trains come in and out for this prosperous camp. The station is of solid brick, hardwood finish throughout, and in appearance, size and conveniences would do credit to any small city. It was completed in 1917.

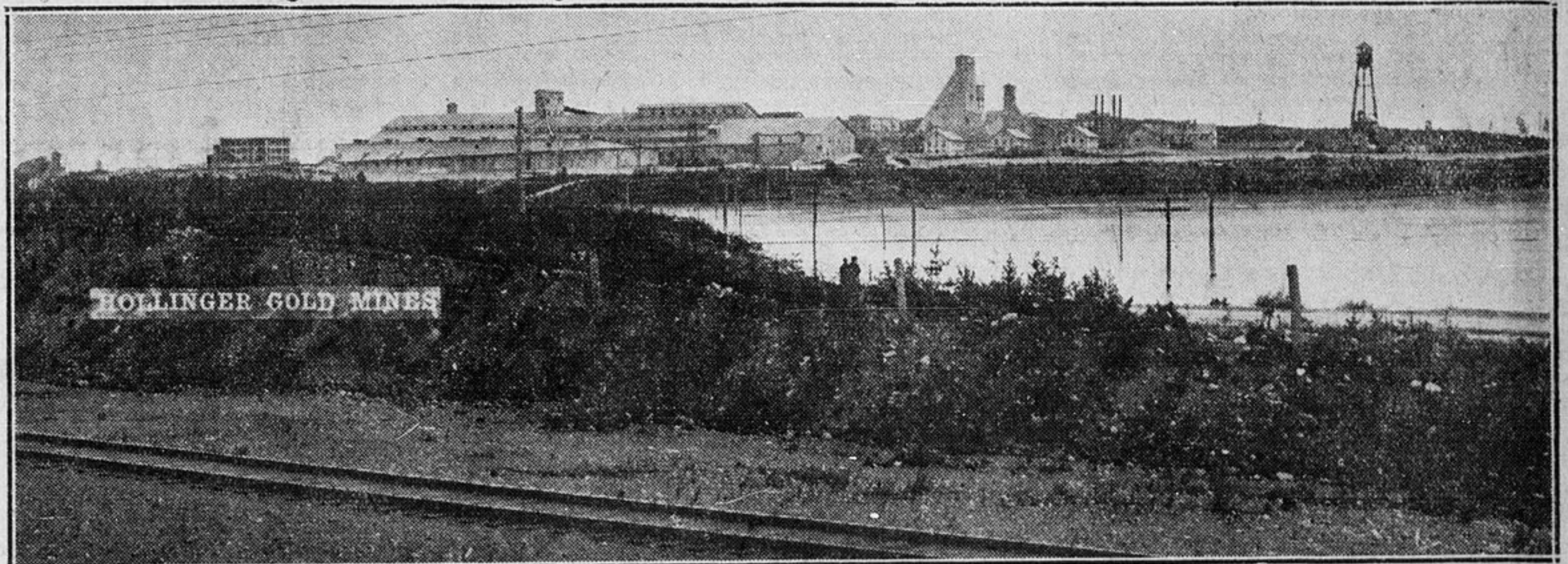


A Row of Hollinger Houses on Tamarack Street

Comfortable and well-appointed homes, with water, baths, electric lights, etc.

A View of the Hollinger Gold Mine

The world's greatest quartz gold mine. Situated in the Town of Timmins and the leading industry of the Town, employing over 2000 men.



A Row of Residences on Hemlock Street

Noted for their fine lawns and gardens and their general comfort.

The Goldfields Hotel, Timmins

One of the best-appointed hotels in the North Land. Built by the Hollinger in the early days for the accommodation of the Town.

