

### I.O.P.A. EXECUTIVE ISSUE INSTRUCTIONS TO REFEREES

Official Statement for Guidance of Officials in Handling Games in Hockey Series.

The following is the official schedule of instructions issued recently by the Northern Ontario Hockey Association Executive for the guidance of the officials handling games. Hockey fans will find it well worth perusal and preservation:

All players must have certificates signed by the Secretary of the Association. These certificates must be shown to the referee before the game.

Before the game the referee shall receive from the captains of the opposing teams a full list of the players

on his side, and each man shall answer to his name at the call of the referee and, shall sign his name on the referee's report in the presence of the referee.

The referee is to see that the penalty box is reserved absolutely for the use of the players, timers and managers and coaches, and the visiting team has half the accommodation provided.

#### Over-time Games

No match is to continue for more than 30 minutes over-time, in periods of ten minutes (5 minutes each way, without intermission,) and a 5 minute rest between periods. The over-time will start after a 10-minute rest.

Should either team decline to play in any of the necessary extra periods it shall be declared a loss for that team.

Each team is allowed nine players for a match, two of which must be goalkeepers. All players must be num-

#### Lines Across the Ice.

Referees are to see that the goal nets are properly fixed in the ice and that a dark distinguishing line is drawn on the ice between the centre of each goal post and another 20 feet out from the goal, across the rink. Within this territory there can be no off-side for the defending team, but the attacking team must keep on-side.

#### Penalize all Rough Play

Referees are to penalize players who throw their sticks along the ice or throw the puck after catching it or picking it up. Penalty, two minutes for the first offence.

Referees are to penalize players who crosscheck, trip or charge opponents or make any unfair or rough play; who disputes his decision or uses foul or abusive language. Penalty at discretion of referee.

When a defending player has deliberately committed a foul to prevent

### YOUR GROCER IS NOT A PROFITEER.

Have a heart! Your grocer is not a profiteer! He is passing along to you reduced prices, as fast or faster than they come to him. Just because prices on many good things are still high, don't blame him. It is usually the poorest quality of everything that shows the greatest decline.

If he is as good a man as the average, your grocer is still doing his utmost to give you the best value for your money. But don't push him too hard. He is only human.

You don't know, but we do, that he is recommending goods that pay him less profit than other well known brands which he might easily persuade his customers to take if he cared to do so.

We know this because he pays us more for Red Rose Tea and sells it at less profit than other teas, so when he recommends you to buy Red Rose Tea, you will know it is because he believes it the best and is willing to take a little less profit for the sake of giving you the best value he can.

We are publishing this because we believe the more our people know of the true facts concerning the profits made by those they deal with, the more generous they will be in their judgments.—T. H. Estabrooks Co., Ltd., Toronto, Ont.

score the referee should not stop the play until that play has been completed. Then ring your bell and penalize the offender. Penalty 3 minutes rest offence.

#### Controls All Minor Officials

All minor officials are under the control of the referee, and he can change any of them at any time. He is to appoint 2 time-keepers and 2 goal umpires and a penalty time-keeper (if he can secure a neutral official), or two penalty time-keepers. Penalties do not commence until the player reports to the penalty time-keeper or time-keepers. Any dispute in time is to be immediately settled by the referee.

Goal umpires should have small white flags to be raised when a goal is scored. The home club is to furnish these flags.

#### Must Return Promptly to the Ice.

Referees are to see that the game starts on time and that the teams return promptly to the ice at the intermissions. The intermission is 10 minutes only, and teams not obeying promptly the referee's signal to return to the ice shall be penalized by the loss of one player's services on the ice for every minute's delay. Referee will give a preliminary signal to the teams three minutes before the rest period expires.

#### Facing off the Puck.

In facing off the puck the left hand side of the players who face the puck shall be towards the opponents' goal and they must keep the blades of their sticks on the ice until the referee drops the puck.

When the puck leaves the ice at the end of the rink the referee is to face it off 5 feet in front of the goal line to one side of the nets. When the puck goes off the ice at the side it is to be faced 3 yards from the boards.

#### Referee's Bell Stops Play.

The referee's bell stops the play and his decision is final. The timekeepers gong is merely a warning that time is up. Referees should act very promptly on hearing the timekeepers signal to avoid disputes. Timekeepers are to be instructed to notify referee at least two minutes before time is up in each period (when there is a stoppage in the play) so that the referee will be in readiness to stop the game promptly when time is up.

#### Keep up With the Play

Referees should at all times keep up with the play, particularly around the nets, so as to be in position to determine whether the puck has scored or not, and so verify the report of the goal umpires.

When an off-side is committed by the defending side from a play within the 20-foot limit at the end of the rink, the puck is to be taken back to the 20-foot line and to one side and there faced off.

#### Mustn't Charge Goal-keeper.

Referees shall penalize all players charging a goal-keeper, whether accidental or otherwise. Penalty of three minutes or more. Goal-keepers who trip or slash opponents are to be ruled off for at least one minute.

#### Substitutes Must Report.

Referee is to instruct teams (including substitutes) before the game starts that they must report to him, whenever a change of player is made on the ice. In all cases where this is violated or where there are more than the proper number of players on the ice the side offending is to be penalized at least two minutes for each player so offending. The referee is to penalize the player whose position the substitute is taking, and this substitute is also to leave the ice until the penalized player's time has expired.

When intending to make substitutions a signal should be made to the referee from the player's box by waving a flag or a handkerchief.

#### Change in Goal-keepers

Goal-keepers must be changed any time in case of injury, but only at the end of periods when substituting. Referees will permit the re-entry of the injured goal-keeper when he is capable of returning to the game.

#### Penalties on-side Interference

Referees should penalize play. Particular attention is called to the habit some players have of obstructing opponents who are not playing the puck. This offence is particularly noticeable around the nets. If any player persists in off-side play after being warned, he is to be ruled off, the penalty at the discretion of the referee. Players must be warned to keep their sticks low at all times.

#### Goal-keepers Must Not Throw Puck

Special attention is drawn to Rule 10, regarding goal keepers. The practice of throwing the puck and chipping on the ice must be penalized. Goal-keepers should be warned

before the game starts. The penalty should not be more than one minute for the first offence. When such penalty has been imposed the puck is to be faced directly in front of the net and approximately five feet out.

#### TIMMINS L.O.L. No. 2552

Meets every first and fourth Monday in the Oddfellows' Hall at 8 p.m. Visiting brethren always welcome.

W. FIELD W.M. Wm. HANCOCK, R.S. R.S.

#### Cook & Mitchell BARRISTERS, SOLICITORS, NOTARIES.

Timmins, South Porcupine  
Toronto

### O. SEGUIN

Agent for Singer

## Sewing Machines

9 Maple Street, Timmins. P.O. Box 75. Phone 211.

ALSO SELLING PIANOS

### J. A. HOWSE

Wholesale Tobaccos and Confectionery

35 Fourth Ave., Timmins

Phone 154

### A Gift Beyond Value

## "Your Photograph"

PHOTOGRAPHER  
of your town

### W. J. BOWNE

next Dominion Bank  
Pine Street, Timmins.

## "Solid As The Continent"

The success that attended the operations of the North American Life during 1920 established beyond question the strength and security of the Company. Its financial position is unrivalled.



#### Outstanding Records for 1920:-

Policies Issued and Revived	— — —	\$24,363,971.00
Amount of Insurance in Force	— — —	99,600,473.00
Assets	— — —	20,041,882.64
Payments to Policyholders	— — —	2,163,997.65
Net Surplus	— — —	2,509,827.21

Such records are the outward evidence of the unexcelled financial position attained by the Company, and of the sure foundation upon which it has been built. With this Company, policyholders' interests are paramount, over 99% of the profit's earned being allotted to them. If you are contemplating new insurance, see one of our representatives. A copy of the 1920 report will be sent on application.

### North American Life

ASSURANCE COMPANY  
"SOLID AS THE CONTINENT"

W. KERR GEORGE,  
D. McCRAE, Col.,  
Vice-Presidents.

Home Office - Toronto, Ont.

L. GOLDMAN,  
President.

WALLACE B. NICHOLSON, District Agent  
Box 748, Timmins, Ont.

### STOCK'S JEWELRY STORE

# FEBRUARY SALE

For 10 Days Only

#### Diamonds

1 only Large Solitaire in 18kt and Platinum Tiffany mounting, Reg. Price \$700.00  
Sale Price ..... \$595.00

1 only Large Solitaire in Men's Heavy 14k Gold mounting, Reg. Price \$475.00  
Sale Price ..... \$395.00

1 only Solitaire in Solid 14kt. Gold Tiffany mounting, Reg. Price \$125.00,  
Sale Price, ..... \$97.50

1 only, set with 3 fine diamonds, Reg. Price \$100.00  
Sale Price ..... \$79.50

1 only fancy three stone diamond ring, Reg. Price \$35.00  
Sale Price ..... \$26.75

1 only fancy mounted Solitaire, Regular Price \$25.00  
Sale Price ..... \$16.25

ALL OTHER DIAMOND RINGS, ALSO EARRINGS AND SCARF PINS.

20 per cent. off

Friday at 2.30

ANY ARTICLE IN OUR WINDOW

## 95c.

Values up to \$10.00

#### Cut Glass 20 per cent. Off

3 only Cut Glass Bowls, Reg. \$13.50,  
SALE PRICE ..... \$9.75

#### Silverware 25 per cent. Off

Including Tea Sets, Casseroles, Pie Plates, Rogers Knives, Forks, Spoons,  
ALSO STERLING SILVER.

#### Gold Jewelry 25 per cent. Off

12 only Solid Gold Brooches,  
AT 1/2 PRICE

#### Pearls 25 per cent. Off

4 only Strings, "Indestructible," Pearls, Regular \$5.00,  
SALE PRICE ..... \$3.25

ALL OTHER GOODS IN THE STORE (excepting contract lines) GREATLY REDUCED

#### Watches

Ladies' Bracelet Watch, 15 Jewels, in Gold Filled Fortune Case, Regular \$30.00,  
Sale Price ..... \$19.75

Ladies' Bracelet Watch, Reg. Price \$15.00,  
Sale Price ..... \$12.00

Men's 14kt. Solid Gold, very heavy, with high grade 17 Jewel Waltham Movement, Regular Price \$135.00,  
Sale Price ..... \$99.75

1 Jewel, Regina in 14kt. Solid Gold Case, Reg. \$90.00  
Sale Price ..... \$69.75

21 Jewel Omega Watch, Regular Price \$48.00  
Sale Price ..... \$34.75

15 Jewel Regina Watch, in Plain Case, Regular \$27.50,  
Sale Price ..... \$19.75

15 Jewel Decimal Watch, Plain or Engraved Cases, Regular Price \$21.00  
Sale Price ..... \$14.75

SPECIAL PRICES ON ALL WATCHES.

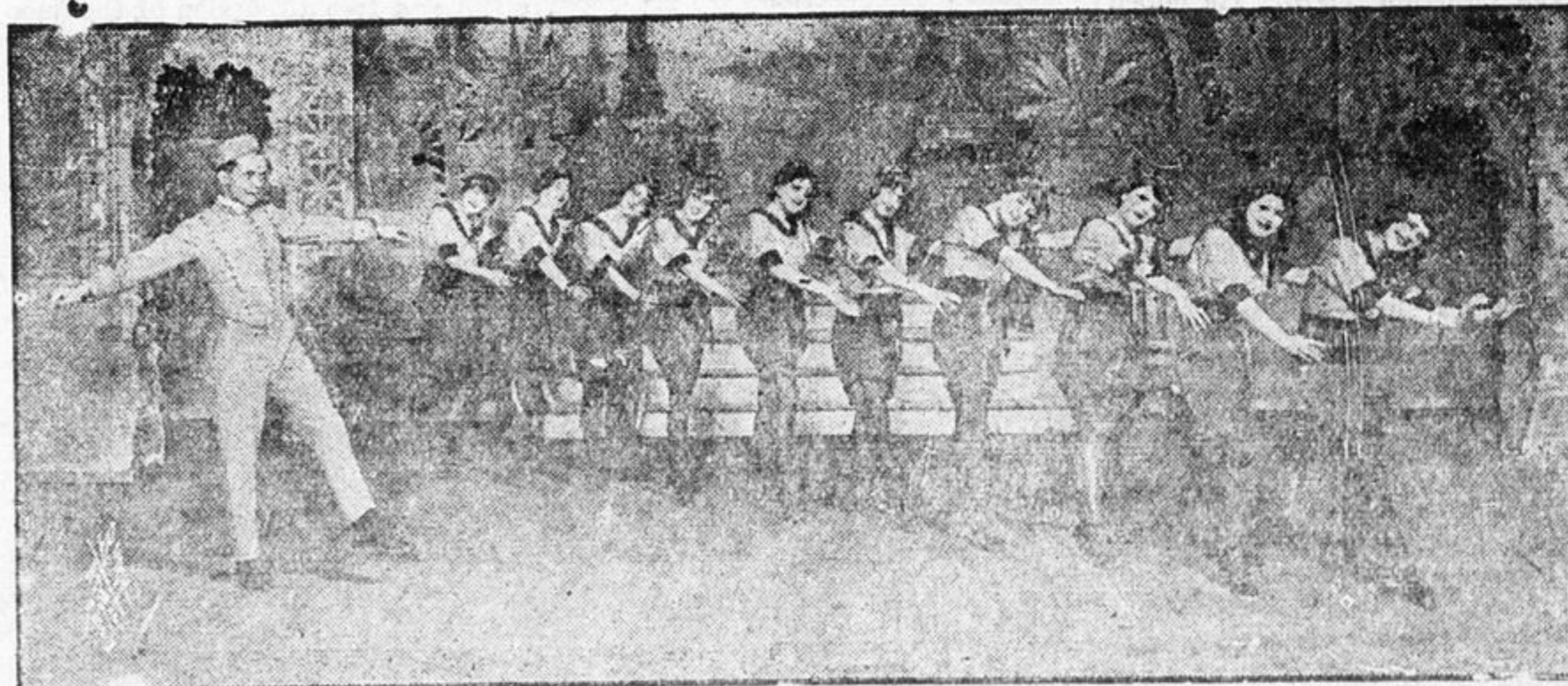
## Stock's Jewelry Store

Watchmakers Opticians Jewelers  
T. & N. O. Watch Inspector

Opposite Post Office

Timmins, Ont.

### A REAL MUSICAL SHOW WITH 50 PRETTY GIRLS



One of the many Choruses from the ...  
Special ...  
Reserv'd Seats \$1.00, \$1.50  
Plan, Tue. Feb. 1st, Mover ...  
n. 50c., 75c.

## WILSON'S "The National Smoke" BACHELOR

Still the Most for the Money

## 10c.

ANDREW WILSON & CO. TORONTO AND MONTREAL