

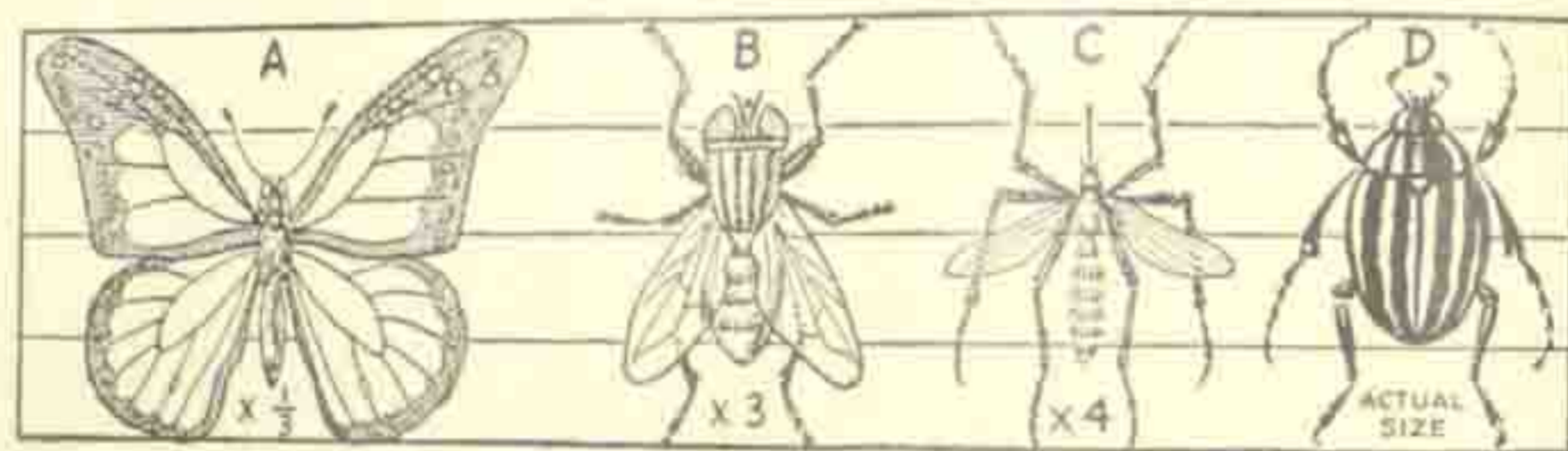
4. On the field, it is 2 ft. from the home plate to the backstop.

5. To score a run, a player must go from the home plate all the way around the diamond. What is the shortest distance that he can run in doing this?

6. Is the diamond a rectangle? How do you know?

7. How many feet is it from second base to the end of the field behind "centre field"?

The pictures below show four insects drawn to different scales. Measure the length of each one with your ruler. Is each insect in the picture 1 in. long?

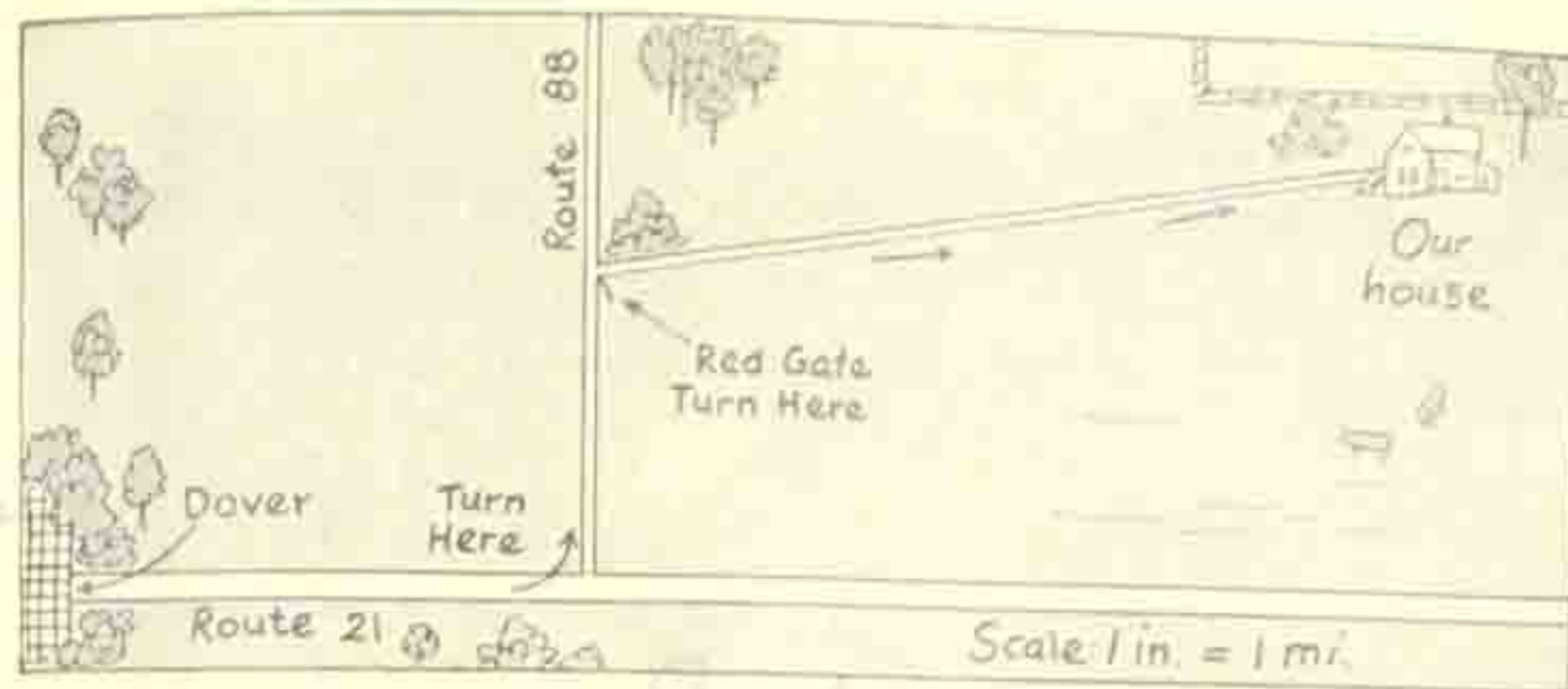


8. The butterfly in picture A is 1/3 in. long. The scale of this drawing is  $\times \frac{1}{3}$ . This means that the drawing is  $\frac{1}{3}$  as long as the actual insect. The actual insect is 3 times as long as its picture. How long is the actual butterfly?

9. The house-fly is 1/3 in. long in picture B. The scale for the picture is  $\times 3$ . This means that the picture is 3 times as long as the house-fly. The fly is 1/3 as long as its picture. It is 1/3 in. long.

10. What is the scale for the drawing of the mosquito in picture C? Is the actual mosquito  $\frac{1}{4}$  as long or 4 times as long as its picture? 1/4

11. Picture D is marked *actual size*. The insect shown is actually 1 in. long.



### Using a Map

Ellen's cousin Alice was coming to visit her for the first time. Alice's father knew the road as far as Dover. Ellen drew the map shown in the picture to help them find the way from Dover.

1. The top of the map is north. What direction is the left of the map? The right? The bottom?

2. What is the scale for this map?

3. By using your ruler, find how many miles east of Dover Alice and her father should turn north.

4. How many miles should they go north on Route 88 before turning in at the red gate?

5. How many miles is it from the gate to the house?

6. How many miles is it from Dover to the house?

7. Alice and her father travelled  $109\frac{7}{10}$  miles before reaching Dover. How far did they travel in all in reaching Ellen's home? Give your answer to the nearest mile.

8. Alice and her father reached Dover at 10:12 A. M. They spent 15 min. in Dover and 17 min. driving from Dover to Ellen's home. At what time did they arrive at Ellen's home?