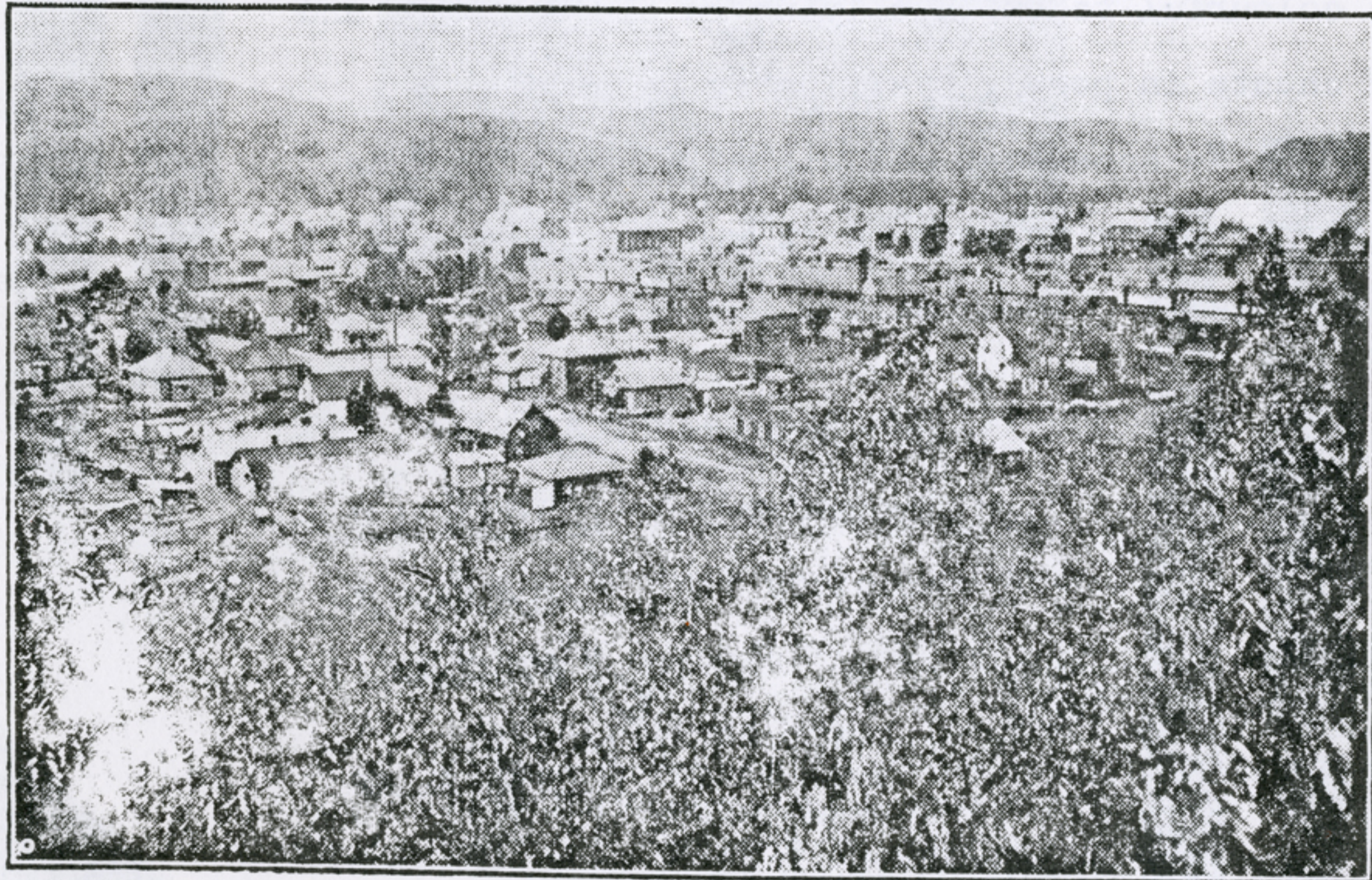


# SCHREIBER IS SCENIC, PROGRESSIVE TOWN

Bird's Eye View of Town of Schreiber



The above picture of the town of Schreiber was taken a few days ago by a Times-Journal representative. The view is as seen from the range of hills on the south-east corner of the town. Almost in the centre of the picture can be seen the station and railway yards of the Canadian Pacific Railway. The town hall and the Railway Y.M.C.A. building can be seen in the centre near the back. On the extreme right at the back of the picture is the wide, white expanse of the new rink roof. The Trans-Canada highway passes between the range of hills seen in the back centre of the picture.