

The County Renaissance Faire is coming again!

Aug. 20 & 21st
at Mariner's
Park Museum

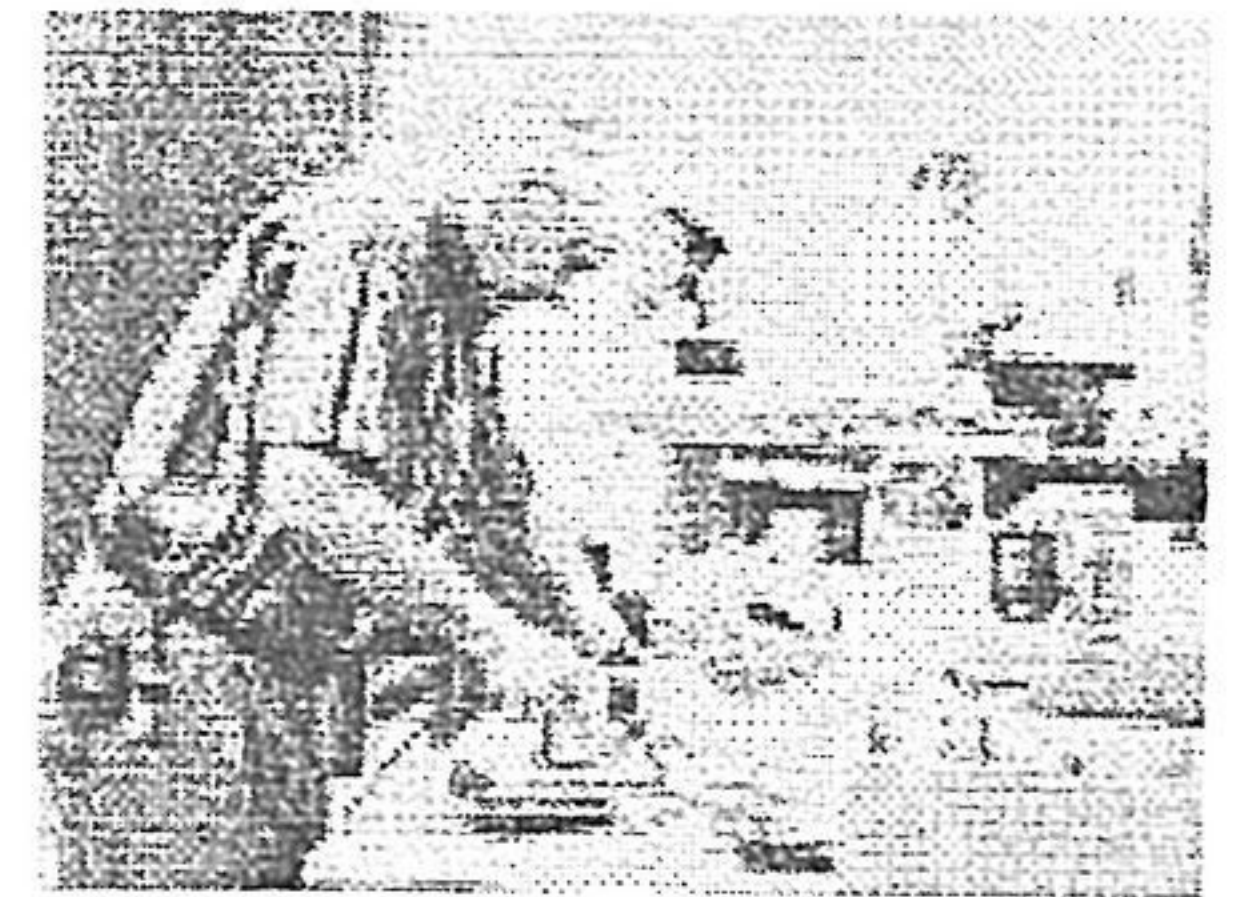


We're having a meeting for all volunteers, performers, vendors or anyone who would like to get involved with this year's Renaissance Faire. Come one, come all! Thursday, June 9th, 7pm at the Regent Theatre, in the boardroom. Hope to see you there!

Can't make it but still want to participate? Call Christine at 476-9141 or Pat at 962-1792

Please check out our new site with photos from last year's faire at www.countyrenfaire.org

Walt's Woodworking Services

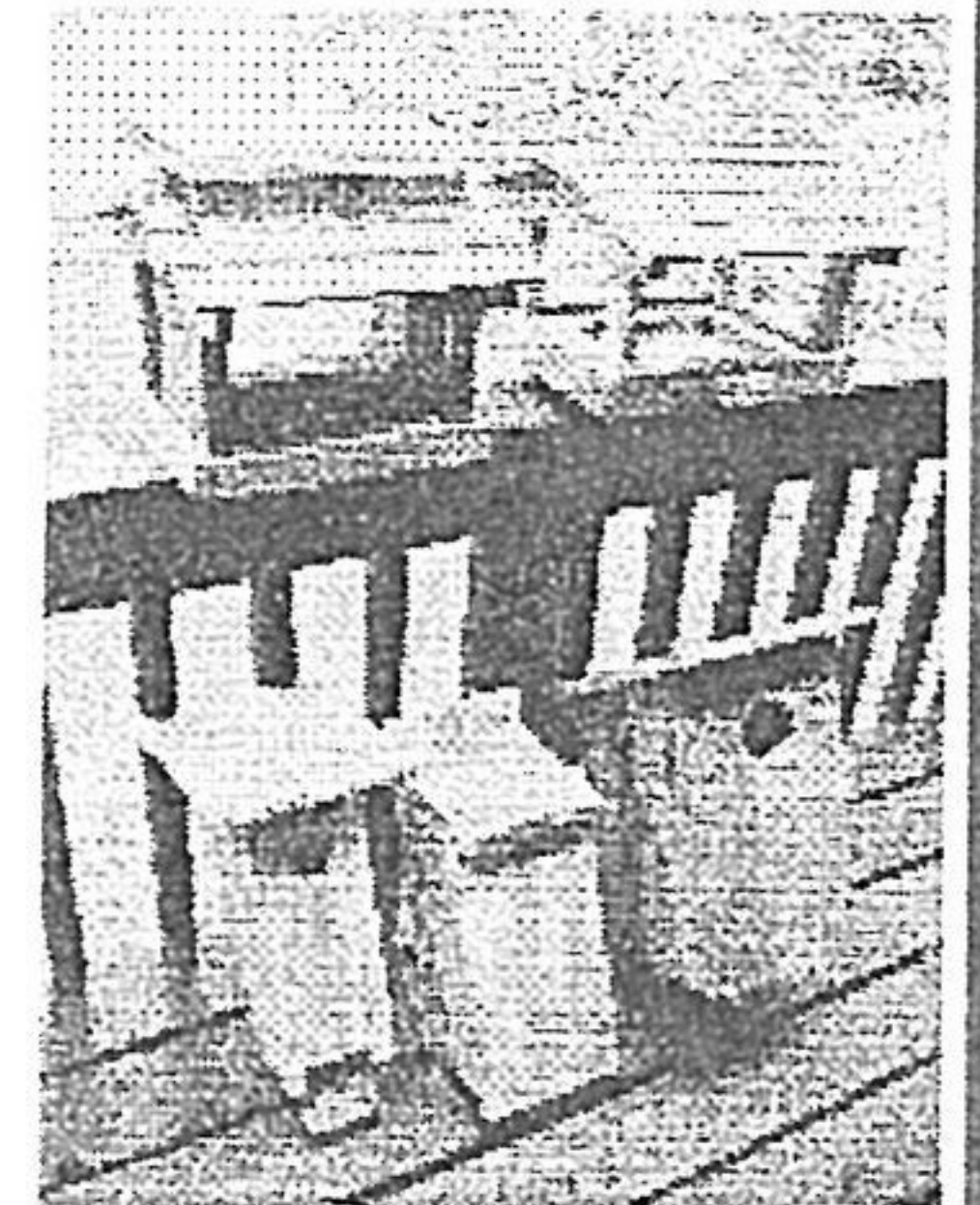


WALT'S SHARPENING SERVICE

Circular saw blades (steel and carbide), knives, gardening shears, scissors, steel thickness planer blades (up to 20"), jointer planer and hand planer blades, chisels, drill bits, lawnmower blades, chain-saw chains and garden spades. For items not listed, please ask.

WALT'S BIRDFEEDERS AND BIRDHOUSES

Decorative cedar birdfeeders \$40, cedar bluebird boxes \$25, cedar bat boxes \$20, pine duck boxes \$40. I will make other designs, such as martin houses, on request.



WALT'S WOODWORKING SERVICE

Do you have a woodworking project you want to do but don't have all the tools you need? My shop and equipment are available at \$30 per hour. Minimum charge is \$10. By appointment only.

Walter Evans, R.R. #2, 62 Goodman Crescent,
Milford, ON K0K 2P0 476-5485
walter.evans@primus.ca

DIABETES

Prince Edward County Discussion Group

invites you to join us

Thursday, June 2, 2005
7:30 p.m.

in the Board Room

P.E.C. Memorial Hospital

Guest Speaker

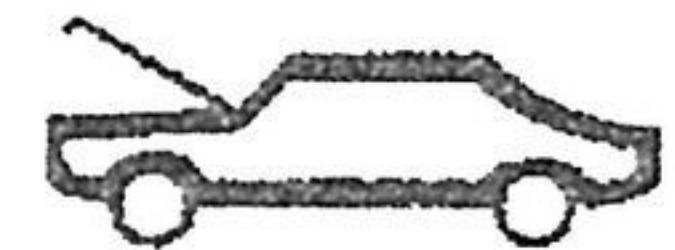
Rhea Lounsberry RN CDE

Hip & Knee Fractures

Digestive Disorders

Come and bring a friend.

BUS: (613) 476-2837
FAX: (613) 476-8081



WALKER'S GARAGE

general repairs, alignment & fuel injection

BRENT & GLENDON WALKER MILFORD, ONTARIO R.R. #2
KOK 2P0