



**Come Join  
The Milford  
Easter  
Parade!**



Dust off your Easter Bonnet and join us on  
Saturday April 19th at 11:00 am  
to welcome spring in good old Milford style!  
The parade will start off at the Town Hall  
and run to Mt. Tabor, where there will be an  
Easter Egg Hunt, refreshments and all sorts  
of fun stuff! Don't miss this one!  
For more information or to find out how you can  
help call Pat at 476-1792 or Carolynn at 476-2017



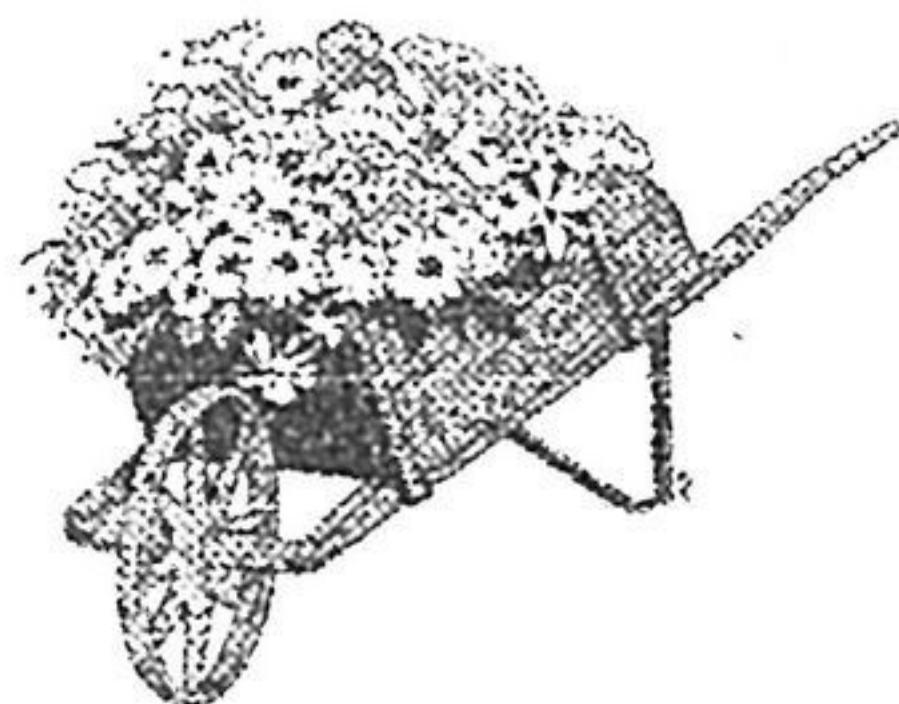
**Computer Tips** - Continued from page 15

Whoa, I've run out of space for this month, join us next month when we will cover more tips on email. Have fun until then!

Pat Larkin, Steve Hungerford and Judson Levered  
Debug Computers

## Walker's Greenhouse

**Welcome  
Spring!**

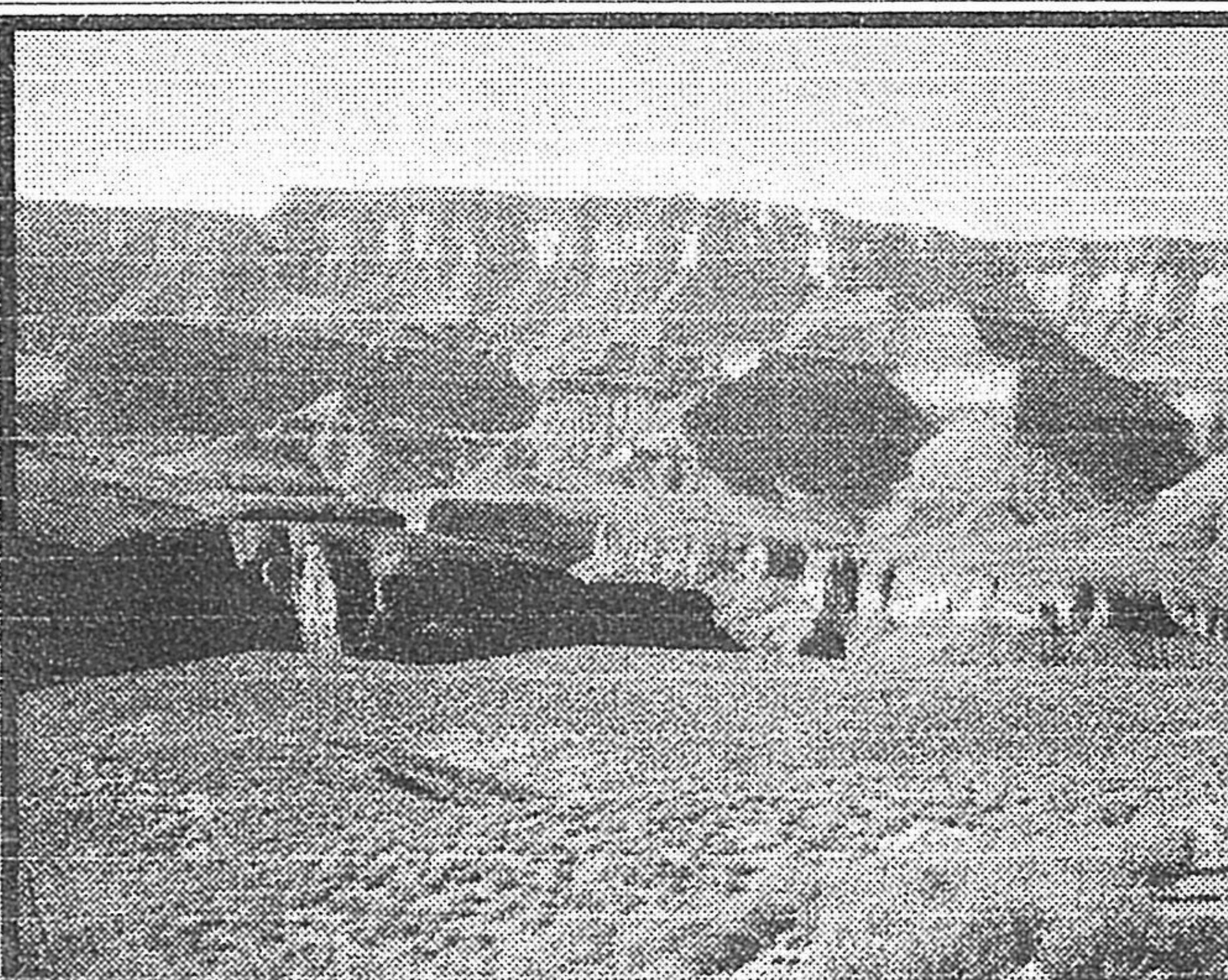


Opening Friday, April 11

**Easter Plants & Planters**

Early Spring Hours 8 to 5 Monday to Saturday  
County Rd 17 1 km East of Milford  
Phone 476-1118

**WANTED**  
Implements  
for FARMALL CUB  
Row Crop Tractor  
Reward offered for any info  
leading to a purchase.  
Call Vicki Emlaw 476-7241



## ARIZONA

Yavapai, Anasazi and Sinagua  
Ranged these canyons centuries ago,  
Moving lightly beside the river  
Through mesquite that sets its green  
Against the vivid ochre of the rocks,  
Cut and formed by wind and rain.

They lived their lives according to the seasons,  
The river's flow, the dry intensity  
Of sun, the canopy of stars.

But their lives were hard and short  
And a man of my years among them  
Was rare indeed.

How strange that at this age  
My life is just beginning.

- Alan Whiteley