

Russell Fire Department — Then . . . and Now



The great Russell Fire of June 6, 1915. This the present Therkelsen store gutted. Photo photograph shows a roofless registry office and courtesy of Mr. Cliff Miller.

Russell Volunteer Fire Fighters, 1977



Russell's Volunteer Firefighters: Back Row — L. to R., Cliff Cullen, Jim Eadie, Fire Chief, Wilton Gamble. Middle Row — Stephen Shirley, Norm Inglis, Rick Corneau, John Harvey, Ian Wade, Mike Fletcher and John Hayward. Front Row — Irvin Sunstrum, Don Garvey, Bill Paul, Ron Hubbard, Al Rothenburger. — Staff Photo.

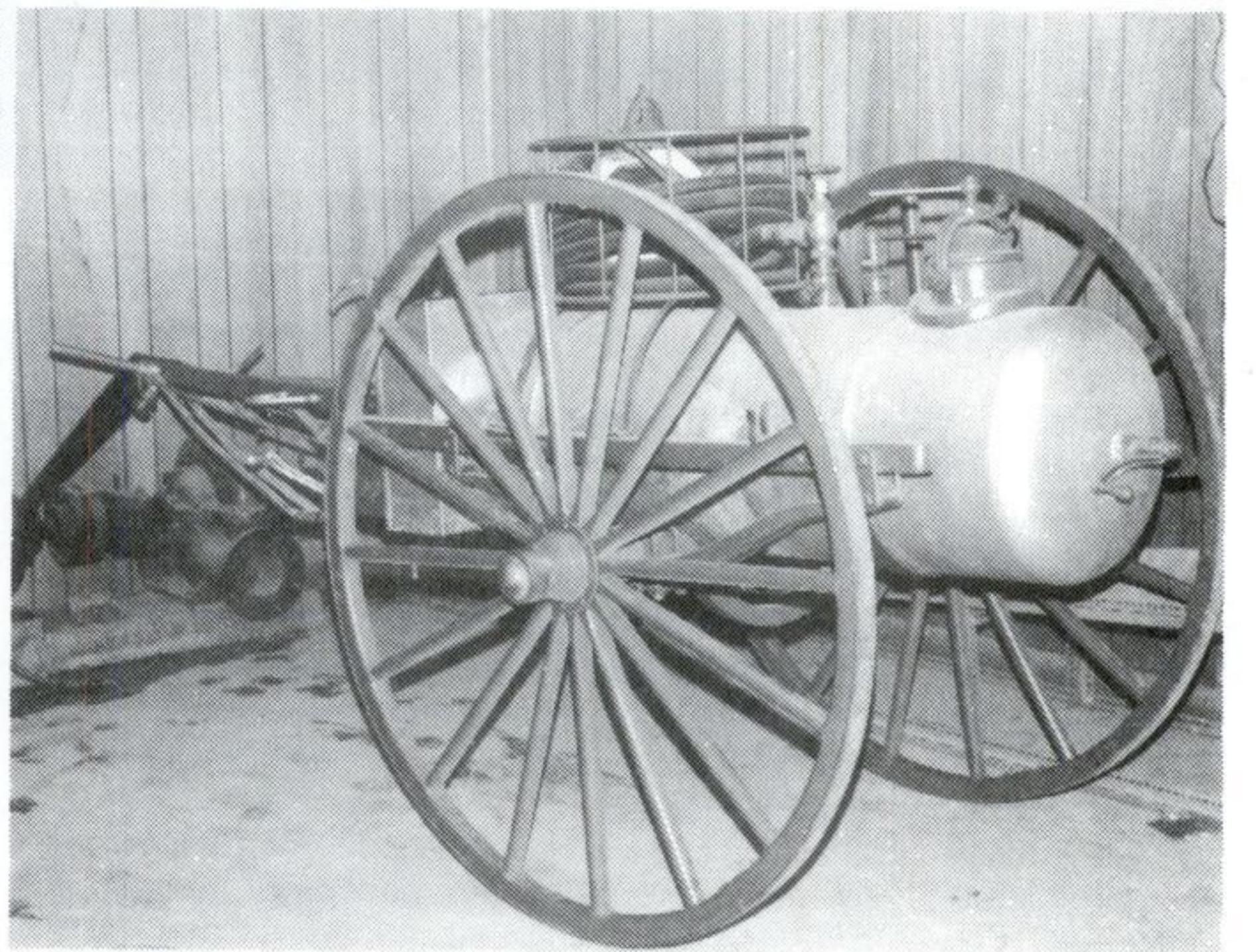
Information on Fire Equipment

Russell's first fire equipment consisted of two horse-drawn soda acid chemical pumps. These unfortunately arrived in Russell to late to be of assistance during the great

Russell Fire of June 6, 1915. These were replaced by the La France steam engine now stands in front of the Town and Country Restaurant in Ottawa's west end.

In 1952 the Bickle Seagrave Pumper came into service and has just recently been replaced by the new Thibault truck, bought by the Township for \$49,344.80. This new fire truck features 4 Scott rescue air packs, 1000 feet of 1½" hose, 600 feet of 2½" hose and is able to pump 625 gallons of water per minute.

Jim Eadie, Fire Chief



OLD PUMPER — Staff Photo

Chaloux Maintenance Farm Service

At your Home and Convenience

Will Grease, Oil, Weld and Fix
Farm Machinery, \$8. per hour

Contact

A. CHALOUX

R.R. 3, Russell, Ont.

Wincham Kennels Reg'd.

COLLIES &
SHETLAND SHEEPDOGS

BOARDING
ALL BREEDS

Clean indoor kennels
Spacious outdoor runs
Daily and Weekly Rates

Arie and Ellie Hogeveen
R.R. 3, Russell, Ontario
VISITORS WELCOME

Located 4 miles south of
Russell on road to Morewood

For Reservations
call

445-5317

A. & R. Chev. Olds.

Gregoire

auto ltd.

Warner's Funeral Home

445-2830



Mike's Beauty Salon



Ladies & Men's Hairstyling

MAY SPECIAL — L'OREAL PERMS

"Modelling" Body Wave, Influence Perm

Regular \$30.00 — Special \$16.95

All \$20.00 Perms only \$13.95

20% off for Sr. Citizens
Specializes in Perms, Tints, Bleach

APPOINTMENTS
MON. TO SAT. — 8 a.m. to 6 p.m.
AVAILABLE AFTER 6 p.m.

Res.: 821-1497

METCALFE, ONT.

Bus: 821-1488

Cochrane's Dairy Ltd.

**LOCALLY OWNED
AND OPERATED
BY CANADIANS**

821-3887

445-2959

Gerry Leroux



EXCAVATING

Excavators — Backhoes
Dozers — Loaders — Ditching

Res.: (613) 445-5603

Bus.: (613) 236-6822

Box 39

RUSSELL, ONT.

K0A 3B0