

# Russell Township Council News

1. **Planning Board:** The new Township Council at its first Planning Board Meeting of 1977 announced that it will soon be looking for new persons to sit on the Board. A big revision of the plan is ahead as the existing maps and projected built-up areas do not include the hamlets North and South of Russell, nor the trailer community South of Limoges, nor other potential hamlets around the Township. In addition no By-Law to make the plan legally binding has ever been passed.

Compromises of the plan have been continuous since it was written. The latest abuse of it is the trailer park on the way to Limoges, which uses up an Agricultural field and is several miles from any services. Electors will recall that opposition to it was an issue in the recent vote: it was approved however, after the election and just before the defeated candidates had to leave office. The original board was staffed by persons who had an equal interest in planning and subdividing and self interest won out. The last board was the Township Council itself and although all of the members were farm-related persons, they were charged with allowing too much severance of farm land. In addition self interests were looked after and the credibility of the plan suffered again.

Persons interested in serving on the board should call a member of the Township Council and ask to be considered.

2. **Major Building Program** in Russell this year. Despite a continuous mini-depression in the construction forecast, housing in Russell Village appears to be still going strong. Chantal Estates and Solidex (North of Russell) will continue at last year's rate. Building permits will probably become available again on the Latour property South of Russell and a 50 house development behind the Funeral Home must commence before February 1978 or lose its approved status.

3. **Sewers:** Sanitary sewer installation will commence in the Village of Russell this year and be completed in 1978. The Province has confirmed the local collector mains and the balance will be available in 1978.

The sewers will serve only those older areas of the Village which do not have 1 acre lots. Payment for the sewage system starting in late 78 or in 1979 will be by frontage, service and hook-up averaging out to \$120.00 per house per year. Bargain hunters will start saving their money now to pay cash in 1979 for their hook-up and frontage charges. The difference in paying cash or a debenture is as follows: Connecting charge, \$341.50 cash or \$29.41 for 40 years (\$1176.40); Frontage Charge, \$2.58 per ft. cash or .30c per ft. for 40 years (\$12 per ft.); Service charges are about \$26.00 per person per year (Not payable in advance.)

4. **Township Tax Base:**

Assessment	1976	1977	Growth	Percent
Township	\$4,538,830	\$4,899,875.	\$361,045.	8 percent
Russell Village	\$676,155.	\$720,420.	\$44,265.	6.5 percent
Embrun	\$1,450,980.	\$1,485,540.	\$34,560	2.5 percent

Note: 1 tax mill produces about \$4,500. revenue in the Township as a whole.

5. **Regular Township Meeting:**

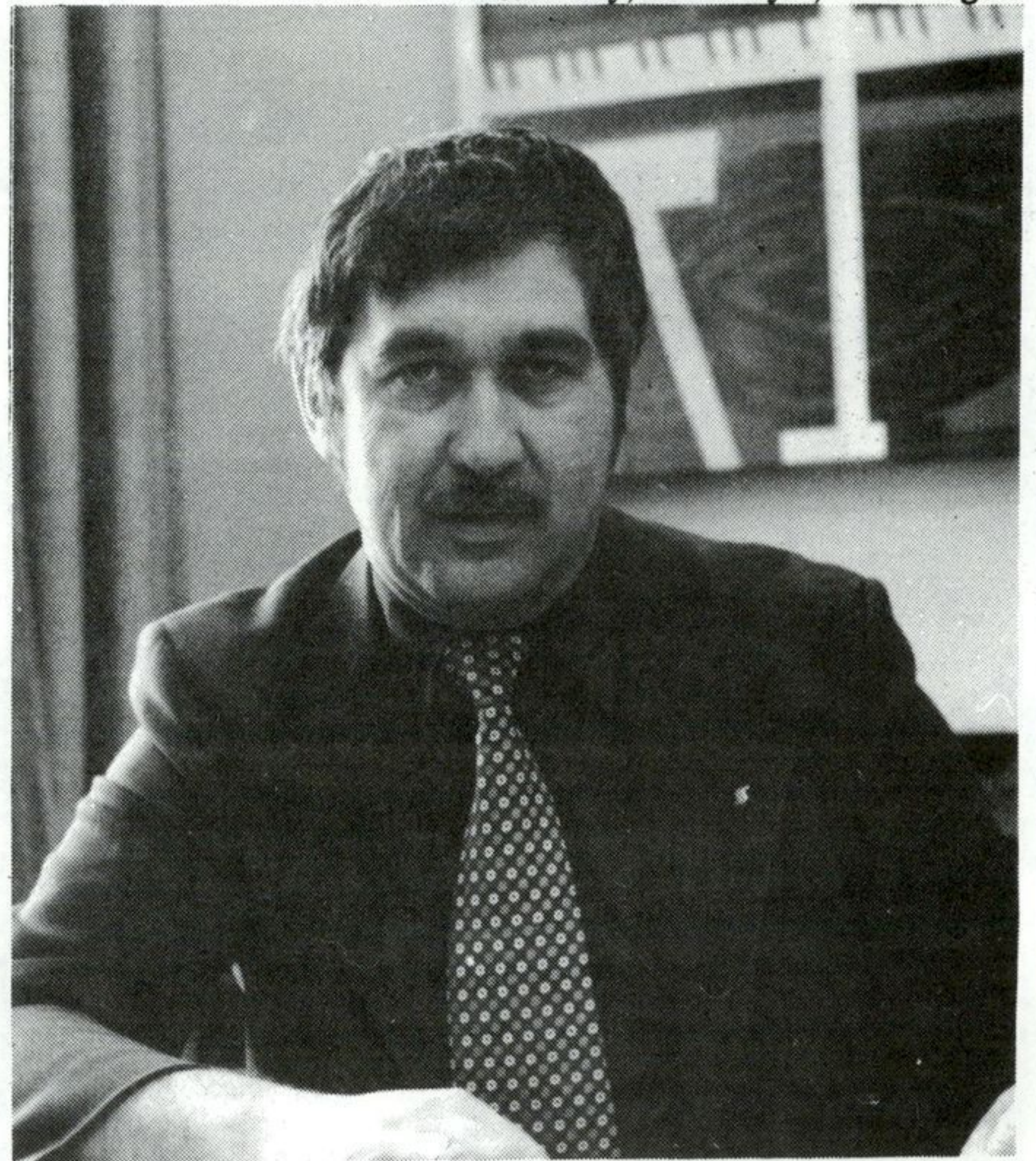
- February 14 and 28
- March 7 and 21
- April 4 and 18
- May 2 and 16
- June 6 and 20

6. **Graders and Roads:** Congratulations to the Township and County road crews for good work during that wild Monday storm in January. The Township crews clean 126 miles of road and street using 4 truck-plows and the graders. An accumulation of two or more inches puts the crews on the road often at 3 a.m. and the whole grid can be cleaned in 4 hours so that school buses, milk trucks and commuters can move.

The pay for these public servants is not high as the top-rated Township grader operators will earn \$5.00 an hour in 1977. But the whole roads operation is expensive. Winchester Township with an equal mileage has only 1/2 as much money, one reason for the difference is that urban townships demand better service.

The issue in the recent election over rented graders has been put aside for two years. It is notable however, that Russell was the first township in Ontario to rent graders, but two other townships in Eastern Ontario have now followed suit.

Baird McNeill



## New Bank Manager

Al Cleroux has left the Russell Bank of Nova Scotia to become manager of a Bank in Vauxhall, Alberta. Mr. Cleroux was in Russell for seven years. During that time he was President of the Curling Club and active in other

Community affairs. The new manager at the Bank of Nova Scotia is Mr. Roger Morin of Ottawa. Our Best Wishes to the Cleroux family as they leave for Alberta!

## Don Coates moves to Calgary

Friends and family gathered at the Curling Club, January 9 to honour Don and Lois Coates and to thank them for their generous contribution to the Russell community. The past president of the R.A. was presented with a set of luggage. Best Wishes to the Coates family who have now settled in Calgary.



## Molasses Brown Bread

- |   |   |   |
|---|---|---|
| <ul style="list-style-type: none"> <li>1 cup regular all-purpose flour</li> <li>1 teaspoon baking soda</li> <li>1/2 teaspoon salt</li> <li>1/2 teaspoon cinnamon (optional)</li> <li>1 egg</li> <li>1 cup all bran or bran buds cereal</li> <li>1/2 cup seedless raisins</li> <li>2 tablespoons shortening</li> <li>1-3 cup molasses</li> <li>3/4 cup very hot water</li> </ul> | <ul style="list-style-type: none"> <li>egg until foamy. Mix in all bran cereal, raisins, shortening and molasses. Add water, stirring until shortening is melted. Add dry ingredients, mixing only until combined.</li> <li>3. Fill 2 greased metal cans, 4 1/4 inches deep and 3 inches across, about 2-3 full or spread batter evenly in 1 greased 9x5x3-inch loaf pan.</li> <li>4. Bake in oven at 350 degrees about 45 minutes for bread in cans or about 35 minutes for</li> </ul> | <ul style="list-style-type: none"> <li>loaf bread. Bread is done when wooden pick inserted near center comes out clean. Remove from cans or pan. Let cool slightly. Slice and serve warm. Or, Molasses Brown Bread is especially easy to slice 24 hours after baking. Remove bread from cans or pan. Cool completely on wire rack. Wrap tightly and store until next day.</li> <li>YIELD: 2 loaves, 4 1/4 x 3 inches, or 1 loaf, 9 x 5 inches.</li> </ul> |
|---|---|---|

Help your Heart...  
Help your Heart Fund

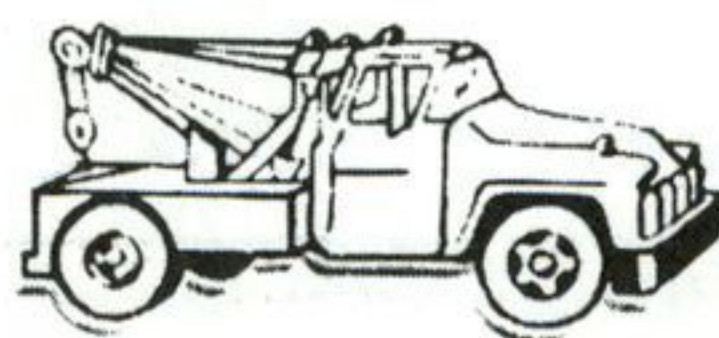


## JAMES EADIE FARM SUPPLY

— Sales & Service —

Russell, Ont. 445-2990

## Doug's Plowing & Towing



- 24 Hr. Service, Radio-Dispatched
- Local and Long-distance Towing
- Commercial and Residential Plowing
- Boosting
- Free Estimates
- Ontario Motor League C.A.A.

Phone collect: 445-5438, days  
445-5575, nights

## Warner's Funeral Home

445-2830

## NEW COMMERCIAL HOTEL

NIGHTLY ENTERTAINMENT  
Every Thursday, Friday, Saturday

Fully Licensed

Banquet Facilities



True Italian Dishes  
Russell, Ont.

445-2808

## PIZZA TAKE OUT

	Small	Medium	Large
CHEESE & TOMATO	2.25	3.25	4.00
PEPPERONI	2.75	3.75	5.00
MUSHROOM	2.50	3.75	4.50
BENNY SPECIAL	2.50	3.75	5.00
ALL DRESSED	2.75	3.75	5.00
PEPPERONI & MUSH.	2.75	3.75	5.00
EACH EXTRA INGREDIENT	.35	.65	1.00

OPEN 6 DAYS A WEEK

from 4 p.m. to 11 p.m.  
Friday & Saturday — 12 a.m. to 12 p.m.