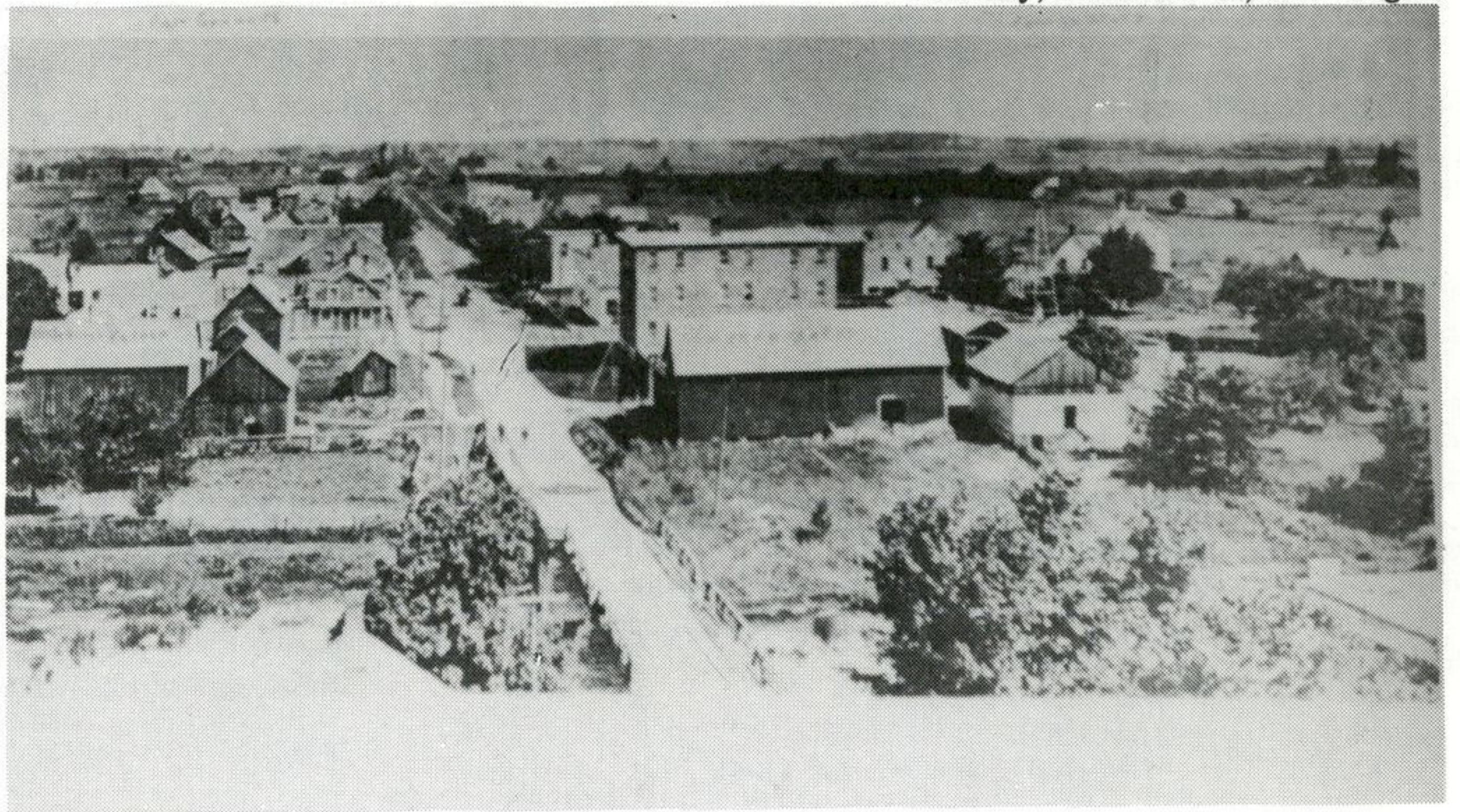


scotiabank
**THE BANK OF
 NOVA SCOTIA**
**RUSSELL, ONTARIO
 445-2880**
'Grow With Us'
"C'mon 59ers!"



Nostalgia

The steeple of the former Methodist church which was razed by fire at Concession and Church Streets more than a year ago seemed to be the vantage point for the anonymous photographer who snapped this shot of the village about 1908. Looking north from the south side of the Concession Street Bridge, Kincaid's Hotel - now

the Commercial House - and stable stand at the centre of the photograph. Up and across the street, the smaller building with the balcony was likely Mather's Hotel - now a vacant lot across from the hardware store. Fire destroyed many of the buildings in the centre of the village. — Photo courtesy of Edgar Loucks.

SWINE FLU SHOTS
 will be available at
 ST. JACQUES PARISH HALL, EMBRUN
 Wed., Dec. 8, 1:30 — 7:30 p.m.
 For persons over 20 yrs. of age
 Voluntary Basis only, free of charge

**Warner's
 Funeral Home**
 445-2830

Piano Recital

The twenty-sixth annual piano recital by the pupils of Mrs. Jack Twiname, RMT, took place on Saturday, November 13, in Russell United Church. An enthusiastic audience was present to hear the following students play their solos and duets.

After opening with O CANADA the following pupils took part: Michael Chinkivsky, Glenn Patterson, Michael MacKenzie, April VanVlaenderin, D'Arcy Provost, Lee Ann Provost, John MacKenzie, Nicole VanVlaenderin, Cather VanVlaenderin, Brian Carscadden, Brian Graham, Heather Hill, Kerri Middlemiss, Madeleine Ruest, Claudette Lauzon, Lynn MacFarlane, Jennifer Freda, Kenneth Carscadden, Peter Latimer, Donna Arbuthnot, Paula Cleroux, Gregory Cleroux, Mary Boland, Beverley Cherry, and Bonnie Johnston.

Russell Senior Citizens

The Russell Senior Citizens have been very active during the summer with card parties, bus trips, and a very successful bazaar held in October. Now they are preparing for their next bazaar. The men folk are busy as well, organizing games. The card parties will continue each week on Saturday nights at 8 o'clock at the Senior Citizens' Drop-In Centre in the Anglican Church Hall.

The regular meetings are held the first Monday of each month, workshop and games Tuesday of each week; Refreshments are served during the Social hour and there is no charge.

With Christmas approaching, an Old Time Christmas Party is

planned for Dec. 13th at 1:30 p.m., a silver collection for admission.

At the November meeting the officers were re-elected by acclamation with an Assistant Secretary, Mrs. Helen Loucks, also a Game committee. Admission to the Card Parties is 75c. It is progressive — the highest scorer at the end of the month receives a prize of \$5.00. Be with us on Nov. 27th at the Senior Citizens Drop-In Centre at 8 o'clock and enjoy "after the game" refreshments.

Note: If you knit, quilt, crochet, sew, embroider or do tatting come and be with us, we need YOU with our crafts.

NEW COMMERCIAL HOTEL
NIGHTLY ENTERTAINMENT
Every Thursday, Friday, Saturday
 Fully Licensed — Banquet Facilities

True Italian Dishes
 Russell, Ont.
 445-2808
PIZZA TAKE OUT

	Small	Medium	Large
CHEESE & TOMATO	2.25	3.25	4.00
PEPPERONI	2.75	3.75	5.00
MUSHROOM	2.50	3.75	4.50
BENNY SPECIAL	2.50	3.75	5.00
ALL DRESSED	2.75	3.75	5.00
PEPPERONI & MUSH.	2.75	3.75	5.00
EACH EXTRA INGREDIENT	.35	.65	1.00

OPEN 6 DAYS A WEEK
 from 4 p.m. to 11 p.m.
 Friday & Saturday — 12 a.m. to 12 p.m.

**Community
 Bulletin Board**

1. Ringette meeting open to public on Dec. 8, at the Russell Arena, 8:00 p.m.
 All interested parents please attend. Bring your ideas and your complaints and they can be discussed. We would like to see more girls join ringette and more parents participate.
2. Dec. 3, Horticultural Society Annual Meeting. Call 445-2965 for details.
3. Dec. 3, 8:30 p.m. Adult Skating Party at arena. See ad.
4. Sat. Nov. 27 at 8 p.m., District Women's Institute Echre Party in Beaverbrook Centennial Centre. Admission \$1.00. Prizes and refreshments. Everyone welcome.

**METCALFE
 PHARMACY LTD.**
 Metcalfe, Ontario 821-1224
 is open for Prescription Services.
 We fill Ontario Drug Benefit Plan and all other Drug Plans Prescriptions.
 REGULAR HOURS: Week Days — 10:30 to 8
 Saturdays — 10:30 to 5

eastern ontario graphics ltd.
 Wedding Invitations Magnetic Signs Office Supplies Rubber Stamps
 CUSTOM PRINTING
 Tel. 448-2137
 Hwy. 43 By-pass
 CHESTERVILLE, ONT.

RUSSELL LOCKER PLANT

 Phone 445-2157
Groceries — Free Delivery Service
 • Locker Rentals
 • Specializing in Custom Cutting
 • Wholesale Meat Sales
 — "We Can Cut 'er" —
George Eastman: Proprietor

Doug's Plowing & Towing

 24 Hr. Service • Radio-Dispatched
 Light & Heavy Towing
 Commercial & Residential Ploughing
 Will tow away old vehicles Free of Charge
445-5575 or 445-5664