

# News

## Russell says no to special levy

The Russell Recreation Association's attempt to wipe out its debts with a special one year assessment of about \$50 for every household was dealt a deathblow at a public meeting in late April.

The residents who attended the meeting with the R.A.'s Board of Directors and the Russell Township Council voted 33 to 28 to impose the special assessment.

The residents who spoke against the proposal to clear the R.A.'s \$60,000 debt argued that there was no guarantee that the special assessment would be removed after the one year period proposed. Some pointed out that the R.A. could very well be in the same debt position in another five years. Others argued that present taxes and the cost of living made the special assessment too heavy to take on at this time.

"With the condition of the economy, do you think it's fair to raise our taxes?" asked Bertha Smith, one of the residents at the meeting. "People on fixed incomes are finding it hard enough. People will lose their jobs and the older ones will be left holding the bag. We weren't quite prepared for the cost of sewage and to add this on is, I think, asking a bit much."

"What's going to guarantee we won't be looking at the same problem in two or three years?" asked Bruno Santilli.

The directors of the R.A. had argued that the effect of carrying the debt meant the community would have to pay at least \$25,000 in interest payments alone as the debt was paid off.

Greg Rokosh, an R.A. director said: "The development of recreation in Russell is dropping off because we're paying for things we can't see."

Others at the meeting pointed out that carrying the debt over

five years would have a serious effect on the level of recreation in the village. Dick Sherwood told the meeting: "We're going to have to spend money on the pool building or we won't have a pool and the whole summer program is shot. The pool building will fall down like the old arena did in the big snow of 1970."

Most of the Russell Township Councillors who attended the meeting opposed the special assessment.

Albert Bourdeau, Deputy-reeve of the Township spoke against the assessment saying: "New houses that are built in the area won't have a chance to pay their share of the debt. I don't think (a special assessment) is the best way."

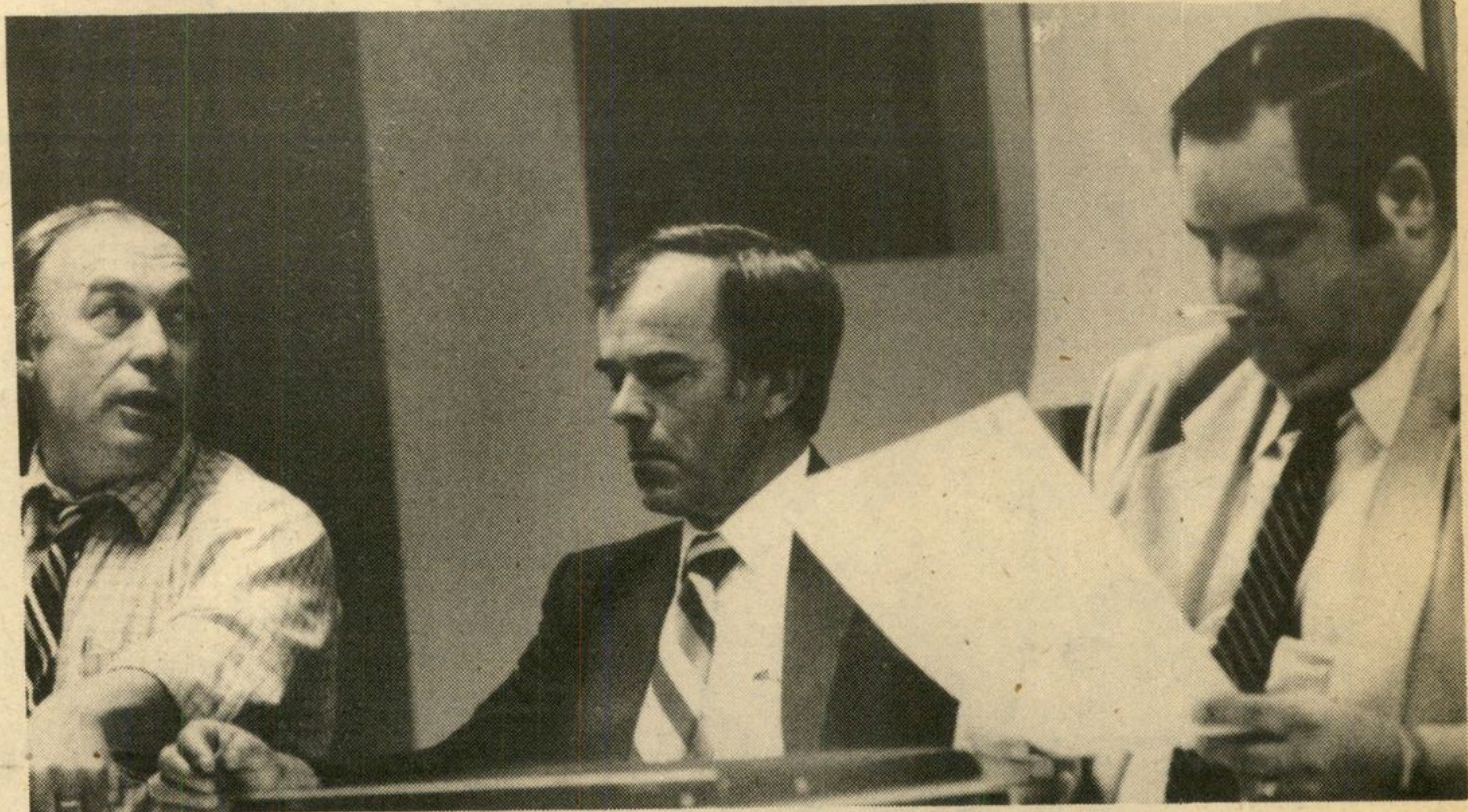
Jean Brisson, another councillor, said: "It's a wise man who pays off his debts."

Baird McNeil, Chairman of the R.A., and one of the major sponsors of the special assessment, argued that it didn't make sense not to pay off the debt because of the interest payments involved.

When asked what guarantee there was, the R.A. wouldn't find itself in the same debt-ridden position in another few years Mr. McNeil said: "The Council wouldn't look too happy at us in going into debt again. If we didn't have the money on deposit at the Township and the Township sees we're not being careful, it could simply say no more money was coming."

Reeve Gaston Patenaude said no one could guarantee that the special assessment would be removed after the proposed one year period.

The comments at the meeting and the vote opposing the special assessment makes it unlikely the Township Council will approve the idea of a special assessment when it approves the R.A.'s 1982 budget.



### Recreation Association told no

Baird McNeil, Chairman of the Russell Recreation Association (Left), Gaston Patenaude, Russell Township Reeve (centre) and Albert Bourdeau, the Township's Deputy-reeve listen to Russell residents veto the idea of a special levy to wipe out the Association's \$60,000 debt at an open meeting in late April.

Dennis McGann photo

## Tree giveaway a great success

There are at least 60,000 more trees in Russell Township today than there was three years ago. That's because Paul Boardman has distributed free, that many trees in the last three years.

Boardman, who lives in South Russell, picks up the trees each Spring from the Ministry of Natural Resources tree nursery in Kemptonville and hands them out to anyone willing to plant them. There was pine, maple and cedar this year — each at least a foot tall.

Russell Township pays for the trees at the low Ministry rate — this year's 20,000 trees cost \$510.

"I didn't do it all myself," Boardman said at this Spring's tree plant, "Andy, who works for Gerry LeRoux helped to deliver the trees and so did Vern Leck."

Boardman only put up one sign — and yet he was out of trees by noon.

"We couldn't believe the line-up for the trees," he said, "there was a traffic jam in front of the house."

Boardman is giving up the organization of the annual event,

and he is encouraging someone to step out and take the tree plant over.

"The basic problem," he said, "is that these trees are really only for rural residents with more than five acres of property."

## Gourmet club recommends...

In March the Russell Gourmet Club visited a well known Chinese restaurant; "The Lantern House" at 175 Lisgar. Our surprise was the new management. We highly recommend that restaurant for its good food, excellent service and fair prices. The dishes were served hot and at a slow pace.

Some unique dishes such as "crab claws" and "beef in a bird's nest" were very tasty and pleasing to the eye. The round tables provided an area for easy conversation in a large group. All in all, the eleven courses were well-presented in a pleasant atmosphere of Chinese decor.

In April, we had a special evening with exotic food. The "The Pousse-Pousses", an Indian restaurant at 408 Rideau Street, is recommended for people who like to taste spicy, hot, curried dishes.

"But a lot of other people want trees as well, so we didn't discriminate."

"But now the Ministry is cracking down and we must take another approach if we want to keep the tree plant going," he said.

All this, however, depends on whether the Township is still willing to pay for the annual event.

Anyone interested in this project may contact Paul at 445-5307.

## Cancer drive

The Russell Branch of the Canadian Cancer Society surpassed its 1982 Campaign objective by more than \$500.00. This year's campaign grossed \$3,705.00, about \$750.00 more than last year.

The Spring Fashion Show, which is becoming a tradition in Russell's drive for funds to fight cancer, raised \$557.00.

A dinner at the Catholic Church

on April 26th, sponsored by an anonymous donor, paid tribute to the 35 volunteer canvassers.

Russell Branch President, Eric King, thanked the volunteer canvassers for their efforts.

Anyone requiring assistance from the Cancer Society can contact the Branch Secretary, Eileen Hamelin (445-5335) or Shirley King, Service to Patients (445-5478).

# Hawley's Corners

**CRAFTS, CURIOS, AND ANTIQUES**

Enquire About Our Craft Classes

Victoria Street,  
Metcalf, Ontario  
821-1332

**New Hours**  
Wednesday to Sunday  
Noon - 5 p.m.

Most people plan for an orderly conclusion to life with a will, adequate life insurance benefits and pension plans. The pre-arranged funeral is part of this kind of sensible planning.

Any type of funeral whether simple or elaborate can be pre-arranged.

Christopher Duncan, a funeral director at Vice and Craig Funeral Homes Inc., Metcalfe, would be pleased to provide more information about pre-arrangement. Or, if you prefer, we will send you the booklet described in the coupon below.



Please send me a copy of your booklet "The Time to Plan a Funeral"

Name \_\_\_\_\_

Address \_\_\_\_\_

\_\_\_\_\_

Postal Code \_\_\_\_\_

# THINK ABOUT IT