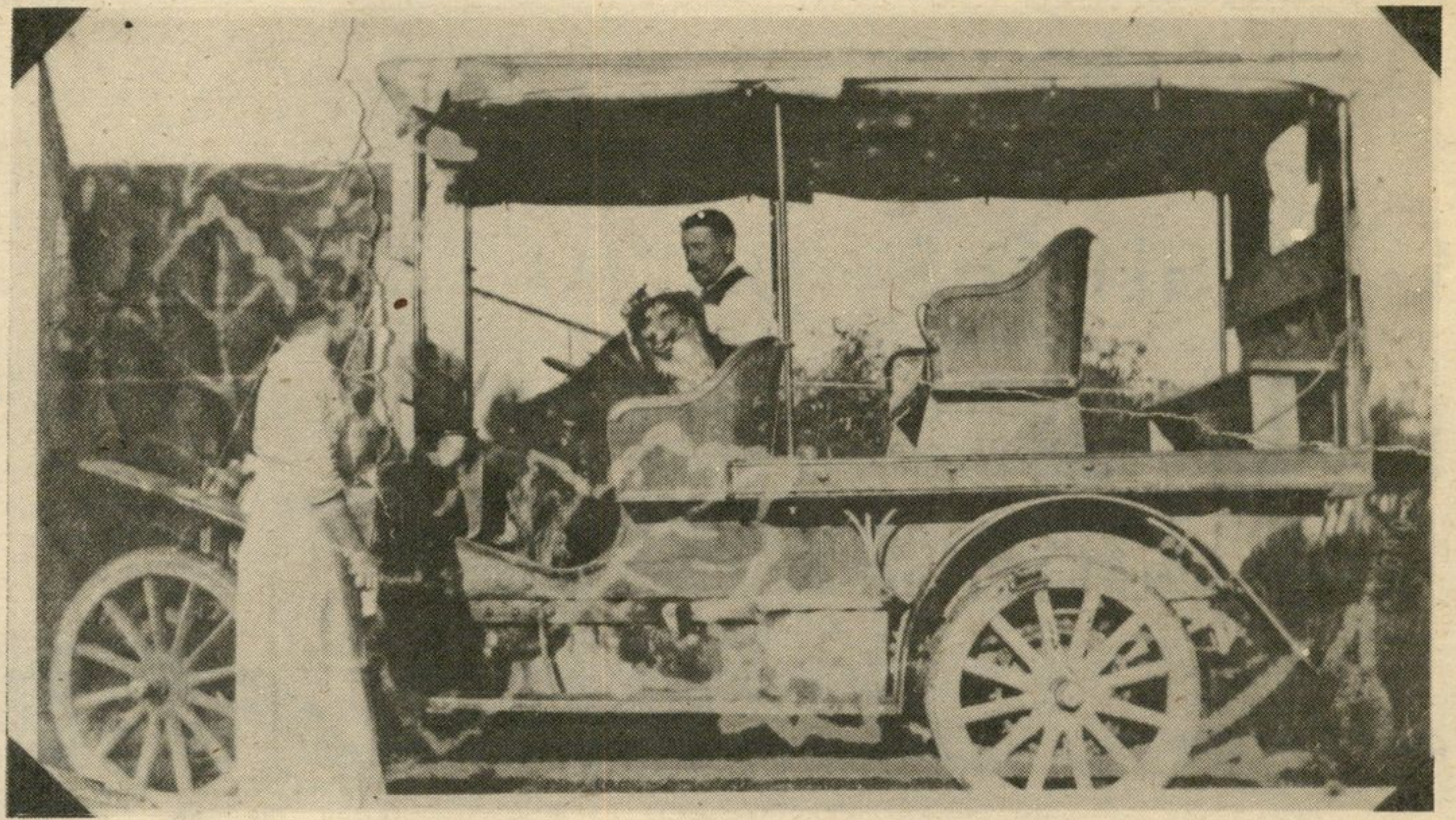


## Backtrack

# Getting there was half the fun — and half the day



by Tom Van Dusen

In the rugged days before paved highways and fast cars, travelling from Metcalfe to Ottawa was a four-hour challenge.

The first form of public transportation between the two centres was James Simpson's horse-drawn stage, shown here with son Orton in a buffalo coat at the reins.

Frances Iveson, 82, now living in Ottawa, recalls the stage to get to the city's big, bright stores on Sparks and Rideau Streets.

"It was a big deal in those days. We sometimes stayed overnight at the little hotel on the market."

The stage, which could carry six or eight passengers, left Metcalfe six days a week at 7 a.m., arriving in Ottawa at 11. The return trip was at 2 p.m. the same day, with arrival at Metcalfe about 6 p.m.

There were three toll booths along the way, Miss Iveson says, at Greely, Leitim, and Billings Bridge. The toll at each station was 20 cents for one horse, 40 cents for a team and 60 cents for a horseless carriage. The money was used to upkeep the hard-packed gravel road.

By about 1907, Charlie Bradshaw had introduced his motorized bus nicknamed the "Nancy Hanx." Charlie is shown at the

wheel of his old rig, side flaps pulled up and ready to go.

Miss Iveson says the bus provided service for about 10 years until personal automobiles became the rage. Not only did the Simpsons and Bradshaw ferry passengers, they also carried mail and parcels, she recalls.

Metcalfe residents also travelled back and forth on the New York Central Railway, getting off at Russell and hiring the hotel livery to take them back home.



Young Orton Simpson is all set to haul 'er into Ottawa in his father's wagon. Orton wasn't leaving his buffalo coat behind in Metcalfe because there was a lot of open country between here and Ottawa. It was a four hour ride.

Once, the stage was  
the only way to get to  
the city's bright lights.

### METCALFE PHARMACY LTD.

Metcalfe — 821-1224

REGULAR HOURS  
Monday through Friday: 10 a.m. to 6 p.m.  
Saturday: 10 a.m. to 5 p.m.



### LaCo-operative Agricole

RUE NOTRE DAME      EMBRUN  
Office 443-2833      IGA 443-3064  
Hardware 443-2833      Feed Dept. 443-2946  
Petroleum Dept. 443-2892      Fertilizer 443-3333

A. Dianne Custance  
Barrister and Solicitor

330 Church St., Box 513, Russell  
445-3183

Office hours:  
Monday, Tuesday, Wednesday — 10:00 a.m. - 4:00 p.m.  
Evenings:  
Tuesday, Wednesday, Thursday — 7:00 p.m. - 9:00 p.m.

### A RURAL LEGACY

*The History of the  
Junior Farmers  
Association of  
Ontario*

This book is now  
available for  
\$10. per copy

300-page book

Call Martin Reichert  
445-3056

## scotiabank

# THE BANK OF NOVA SCOTIA

RUSSELL

445-2880

'Grow With Us'  
Scotia Bank

## Guy Brasseur Ltd.

Flooring Contractor  
Ceramics, Carpets  
Curtain, Drapes

FREE ESTIMATES

584 Notre Dame St.  
Box 278, Embrun

443-2155