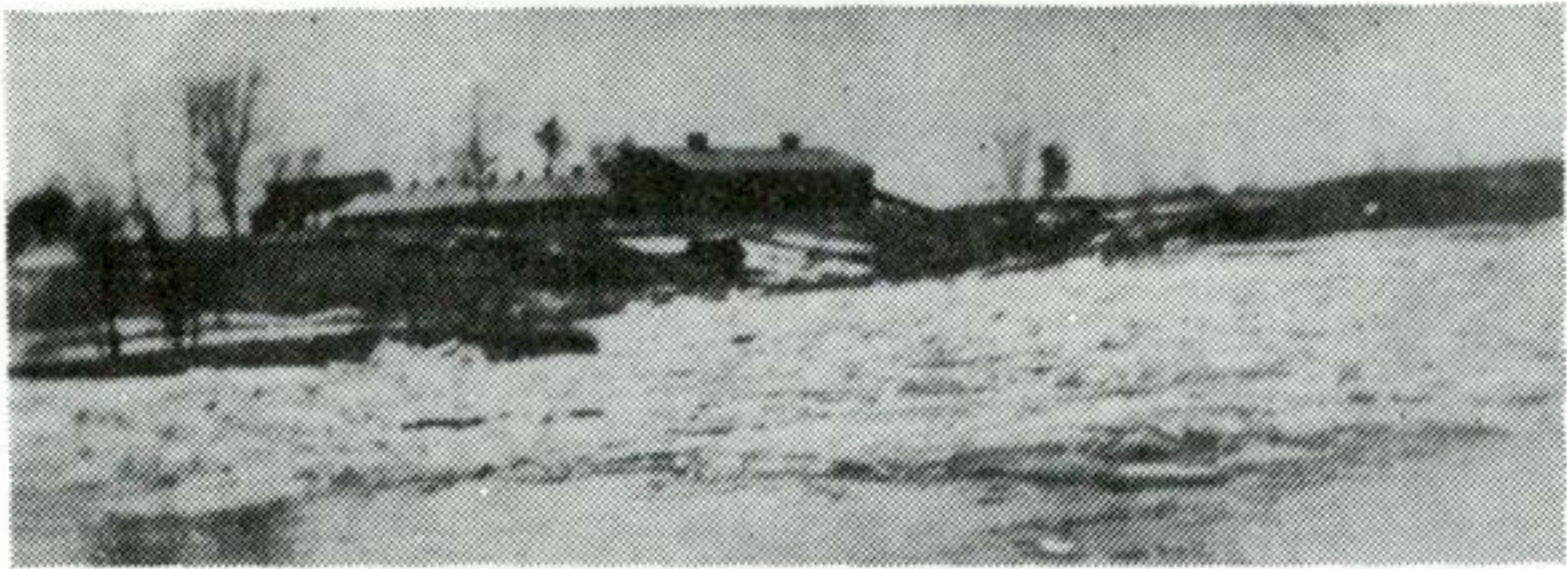


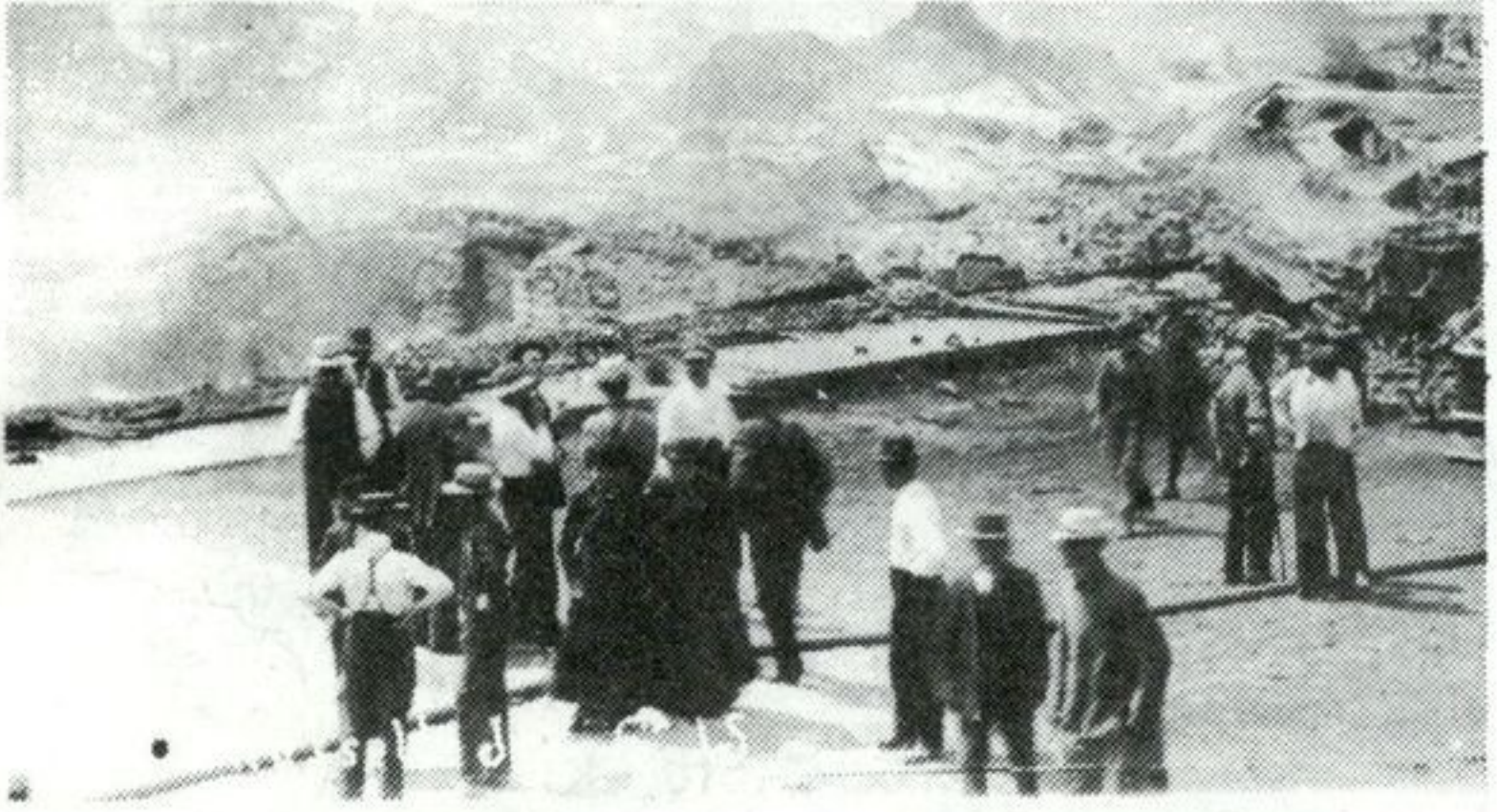
Backtrack



Long Gone Russell Brickyard

Russell Village had two brickyards during its history. This old photograph taken during the spring ice breakup shows the second brickyard which was built about 1910 with local money supplied by the late Dr. Dugald McDougall and J. D. McPhail, among other residents. It was located on the north bank of the Castor River near Loucks Bridge at the east end of the village. The first brickyard was owned by Hamilton Rombough and was situated on the same side of the river about a mile further east than the second yard. Many local houses were built with bricks from these yards. (Courtesy of Phillis Young)

The bottom photo shows Russell Village on the morning after the devastating fire in 1915. (Courtesy of Jenny Dow).



Obituary

The funeral of the late Jenny Cherry of Russell Village was conducted by Rev. Leonard Woolfrey of Russell United Church. Mrs. Cherry was a twin daughter of George E. Sully and his wife Ann Ruth Wilton, born in Osgoode Township near Metcalfe, January 9, 1883. In her youth she spent three years in Los Angeles and became organist of the First M. and E. Methodist Church Sunday School.

In 1908 she married Hackett Abraham Cherry of Russell and she and her husband lived one half mile south of the village for 34 years, moving to Russell Village in 1942. She was predeceased by her married daughter Dorothy Ruth Caroline Wilson in 1916. Her husband predeceased her in 1959.

Living in her Russell Village home over 36 years and participating in church and horticultural activities, Kings and Sons and Daughters and showing great interest in youth, she became widely known as Grandma Cherry.

Her grand-daughter, Roberta Ruth Gamble married Clifford Cullen on March 25, 1978 on her grandmother's 70th wedding anniversary. Her passing on Oct. 1 after nearly 96 years displaying a keen mind, active body and loving disposition, leaves one daughter, Mrs. R. W. (Georgina) Gamble of Russell Village, three grand children, Wilton Winston Gamble, Roberta Ruth Cullen of Russell and Robert Thomas Wilson of Ottawa; three great grandchildren, Steven Wilton Gamble, Cheryl Ann Gamble of Russell and Colleen Wilson of Ottawa. Interment was in Russell Village United Church Cemetery.

Security in strength

Honoring Russell war veterans is not a celebration of war, Rev. M. A. Minvielle stated during a recent sermon. Those who have experienced war are the last to want repetition but the security of the nation lies in its strength, he said.

BOARDING

DOGS — CATS



ESTABLISHED
SINCE 1965

Reserve early for holidays

Breeders of
LABRADOR RETRIEVERS
Yellow Litter due Nov. 15

RO-SHAN KENNELS REG'D.

5 miles south of Embrun **987-5479**

GORD'S SKATE SHARPENING

TEL.
445-5541



Mon.-Fri. 7-10 p.m. Sat.-Sun. 9-2:30 p.m.

EMBRUN PLUMBING & DISCOUNT SUPPLY STORE

EVERYTHING YOU NEED
FOR YOUR PLUMBING

Repair — Renovations — or New Construction

Visit our Showroom or Phone

Industrial Park
Embrun

443-5258

METCALFE MUSIC & SOUND STUDIO

Now offering lessons on Guitar and Drums

Qualified Instructors

Phil McVey — guitar instructor

Doug Cochrane — drums & percussion instructor

**SPECIAL DISCOUNT RATES FOR STUDENTS
ON GUITAR AND DRUMS ON PURCHASE**

Authorized Yamaha Dealer • Full line of Guitars • Records
Tapes • Guitar accessories • Sheet music, etc.

DROP IN AND MEET US

Victoria Street, Metcalfe

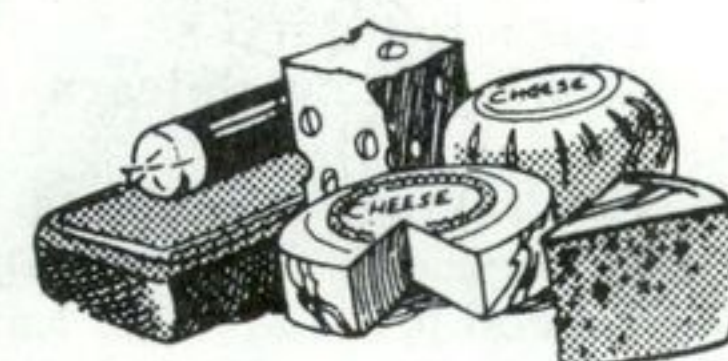
8 2 1 - 1 2 5 8

CHEESE

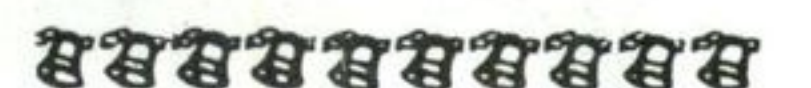
FOR THE BEST OF FACTORY
MADE CHEESE VISIT

GREELY CHEESE SHOP

[MEADOW DRIVE-OLD HGWY 31]



See us for your party needs
and gift trays. 2½ - 5 lb. blocks
available. We will ship.



Balderson & Imported Cheeses

Boutique La Couturiere

Confection — Sewing Alterations

Tissus a la verge — Remnants

Drapery fabrics and all needs for
sewing, crochet, macrame . . .

SERVICE REPARATION
SINGER — OTHER BRANDS

Come and see our special of the month

Francine Dignard, Mgr.

528 rue Notre Dame

Embrun

443-3113