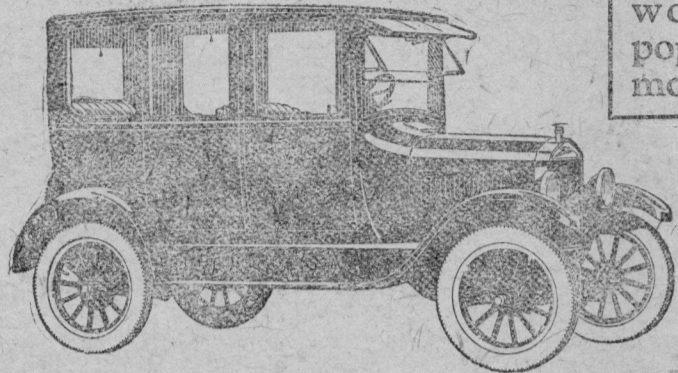


Maintaining Ford Leadership

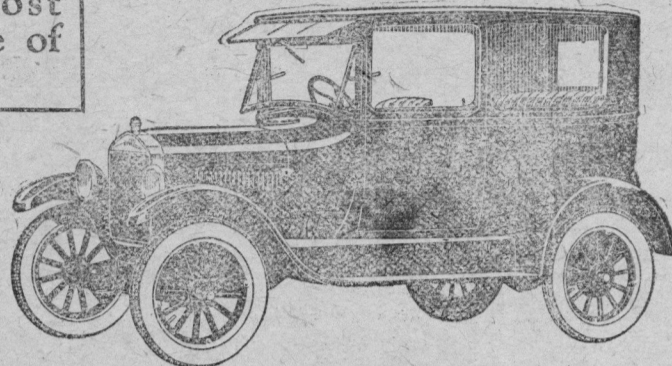
—Highest Quality at Lowest Cost

Introducing many improvements in the world's most popular line of motor cars.



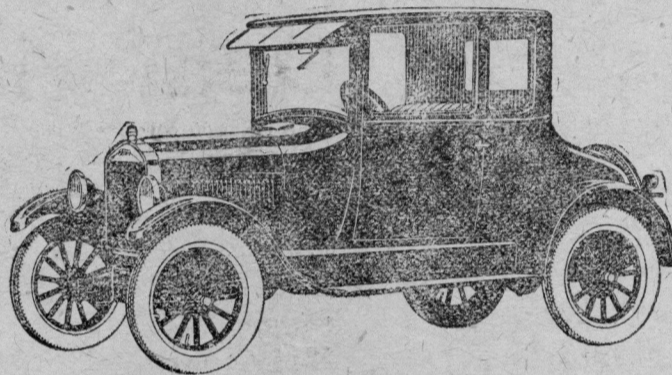
The Fordor Sedan

Color—Gray with black enamel running gear. Composite body. Nickeled radiator shell and headlamp rims. Leather-cloth sun visor, closed at both ends. Standard equipment includes starter, cord tires, demountable rims, dome light, windshield wiper, rear view mirror and dash lamp.



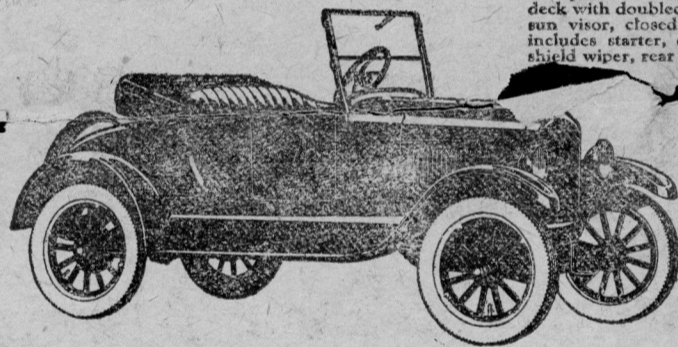
The Tudor Sedan

Color—Dark Blue with black enamel running gear. All-steel body. Nickeled radiator shell and headlamp rims. Lower seats; both front seats tilting. One-piece ventilating windshield. Leather-cloth sun visor of new design, closed at both ends. Standard equipment includes starter, cord tires, demountable rims, windshield wiper, rear view mirror and dash lamp.



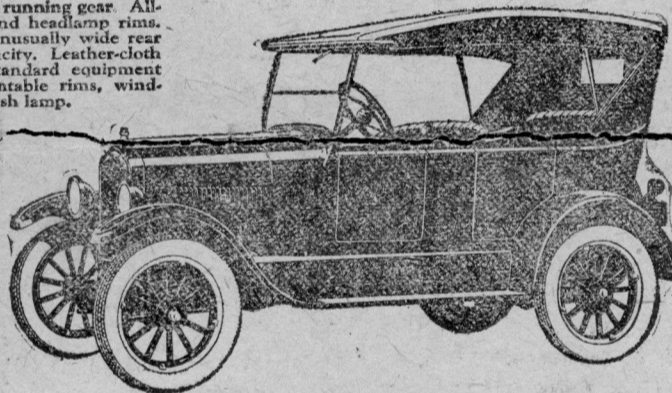
The Coupe

Color—Dark Blue with black enamel running gear. All-steel body. Nickeled radiator shell and headlamp rims. One-piece ventilating windshield. Unusually wide rear deck with doubled compartment capacity. Leather-cloth sun visor, closed at both ends. Standard equipment includes starter, cord tires, demountable rims, windshield wiper, rear view mirror and dash lamp.



The Runabout

Color—Black. All-steel body. Double ventilating windshield. Wide rear deck with compartment space greatly increased. Tool box under seat. Standard equipment includes cord tires, storm curtains opening with both doors, windshield wiper and nickeled headlamp rims.



The Touring

Color—Black. All-steel body of streamline design. Double ventilating windshield. Ford leather-cloth one-man top. Tool box under front seat. Standard equipment includes cord tires, weather-proof side curtains opening with all doors, windshield wiper and nickeled headlamp rims.

Ford

CARS · TRUCKS · TRACTORS

MADE IN CANADA

D. W. ROBERTSON

Authorized Dealer

Russell, Ont.