

## Church Column

# It's your choice - vacancy or no vacancy

By Rev.  
MARK PARENT  
St. John's  
Baptist Church

One of the most discouraging aspects of holiday travelling is the appearance of that plywood painted or neon-lit sign which reads — "no room, no vacancy".

I remember the many trips my family took between Toronto and Halifax.

Dad would always want to push on, to get those extra few miles behind us.

Mom would start in the early afternoon, pleading and coaxing that we stop at this or that motel.

In the ensuing discussion, dusk

would creep up on us, and those disappointing signs would begin to blossom like dandelions. No room.

It is a familiar event. And so when we read the Christmas story we can feel for Mary and Joseph when they received that news.

No room.  
And looking back from our twentieth-century perspective we

exclaim, "If only I had been there. I would have opened up my door. I would have given them the best room in the whole place."

It is so easy to feel sympathy from afar. To dream of doing noble deeds when we know we won't be called upon to do them. And yet, we still have our opportunity, for even today Christ knocks at the door of your life.

What is your response this Christmas? Do you put out the 'no room' sign, saying, "there's room for greed, room for hatred, room for selfishness, room for apathy, but no room for you!"

Or do you open the door and echo the words of the hymn, "Come in today. Come in to stay. Come into my heart Lord Jesus."

Christ is still the traveller, today as he was 2000 years ago. And it's a sad, sad thing to see so many people put up the 'no room' sign.

Christ is knocking this Christmas. What is your response? Do you scurry around desperately trying to find that 'no room' sign, or do you open the door. The choice is yours.

# Loblaws

# U n o l i d a y

### more meat values

cut from Canada grade A beef	was 2.38
<b>boneless stew beef</b>	<b>1.98</b>
lb.	
freshly ground	was 2.38
<b>medium ground beef</b>	<b>1.98</b>
lb.	
cut from Canada grade A beef boneless	was 3.28
<b>sirloin tip roasts or steaks</b>	<b>2.68</b>
lb.	
cut from Canada grade A beef	was 3.68
<b>sirloin tip steaks</b> tenderized	<b>2.98</b>
lb.	
ziggys fast fry	was 3.98
by the piece	
<b>back bacon</b>	<b>3.78</b>
lb.	
Loblaws or Swifts sugar plum boneless, cooked	was 2.85
<b>smoked dinner hams</b>	<b>2.48</b>
lb.	
frozen Swifts Premium, regular or beef	was 1.38
<b>brown 'n' serve sausage</b>	<b>1.18</b>
8 oz. pkg.	
ziggys, sliced	was 2.98
<b>summer sausage</b>	<b>2.78</b>
1 lb. pkg.	
ziggys, 9 assorted varieties	was 1.49
<b>cooked meat chubs</b>	<b>1.29</b>
8 oz. each	
ziggys	was 1.54
<b>sliced cooked ham</b>	<b>1.38</b>
6 oz. pkg.	
Cuddy Brand 3 varieties sliced	was 1.05
<b>cooked deli turkey</b>	<b>.88</b>
4 oz. pkg. each	
Cuddy Brand salami or kielbassa	was 1.15
<b>cooked deli turkey</b>	<b>.88</b>
6 oz. pkg. each	

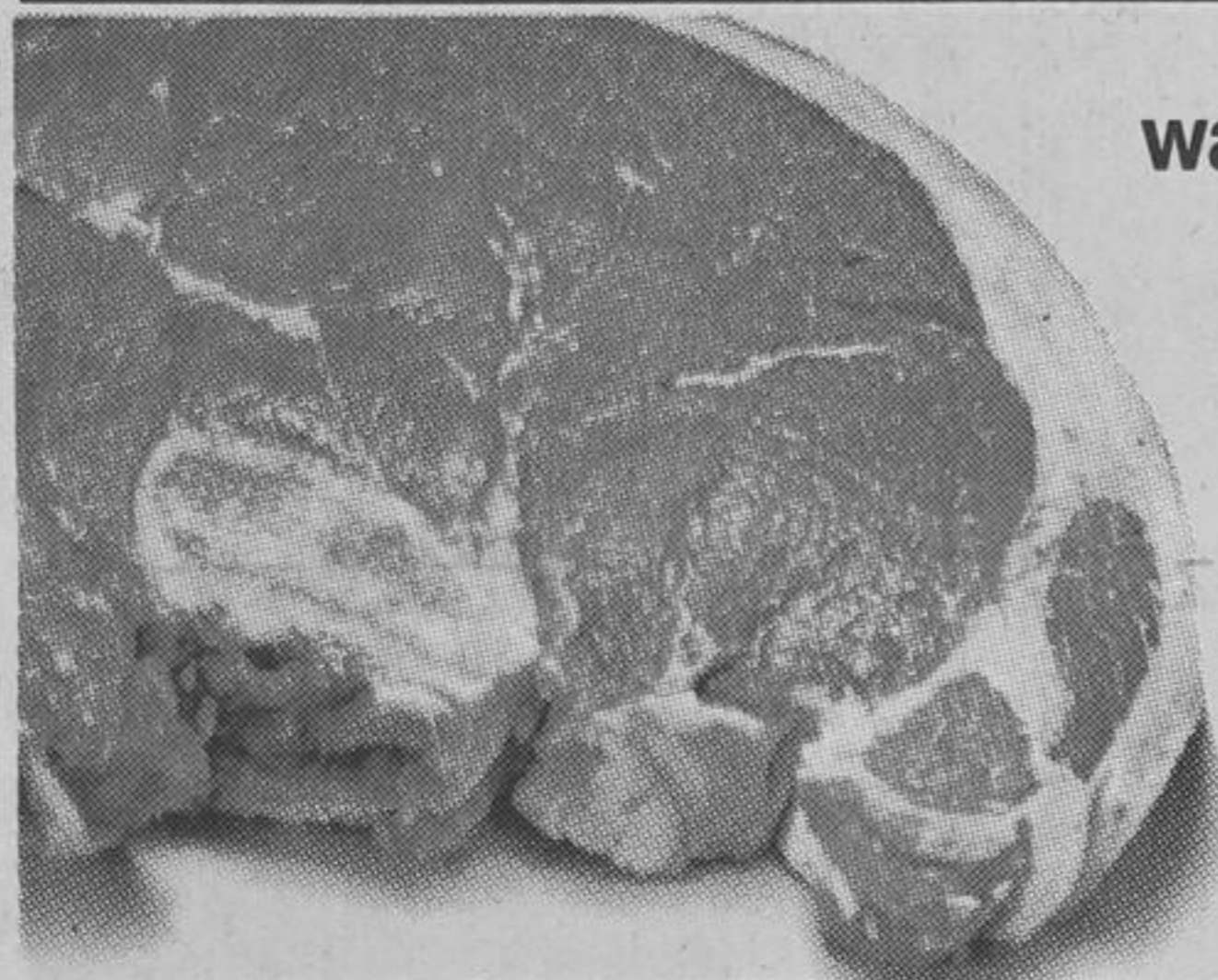
### more grocery values

Bright's cocktail	was 1.03
<b>vegetable juice</b>	<b>.93</b>
48 fl. oz. tin	
laundry powder	was 7.19
<b>Tide detergent</b>	<b>6.79</b>
12 L box	
Alcan	was 2.21
<b>aluminum foil</b>	<b>2.06</b>
45 cm x 10 m roll box	
plus 25c deposit	was .55
<b>Coca-Cola</b>	<b>.45</b>
750 mL ret. btl.	
plus 25c deposit	was .55
<b>Sprite</b>	<b>.45</b>
750 mL ret. btl.	
Borden	was 1.39
<b>Realemon lemon juice</b>	<b>1.29</b>
675 mL btl.	
Added Touch, all varieties	was .99
<b>Monarch cake mix</b>	<b>.83</b>
18 1/2 oz. box	
Scope	was 1.79
<b>mouthwash</b>	<b>1.59</b>
375 mL btl.	
Maple Leaf	was 1.55
<b>rum &amp; brandy mincemeat</b>	<b>2.19</b>
24 fl. oz. jar	
Aim	was 1.55
<b>toothpaste</b>	<b>1.09</b>
100 mL tube	
Terumo	was 1.99
<b>prismatic thermometer</b>	<b>1.49</b>
1 unit pkg.	
personal size bar	was .54
<b>Caress toilet soap</b>	<b>.49</b>
3.5 oz.	
Dolo, Dofino, Danish	was 5.19
<b>Havarti cheese</b>	<b>4.89</b>
2 lb. pkg.	
toasted onion farmers, or herb & garlic	was 2.05
<b>Baden XXX cheese</b>	<b>1.89</b>
12 oz. pkg.	
Woodman's	was .99
<b>extra hot horseradish</b>	<b>.93</b>
8 fl. oz. jar	
Woodman's	was .73
<b>regular horseradish</b>	<b>.67</b>
8 fl. oz. jar	
coloured (1/4 lb. squares)	was 1.69
<b>Blue Bonnet margarine</b>	<b>1.59</b>
2 lb. box	
Monarch vegetable oil	was 1.89
<b>soft margarine</b>	<b>1.79</b>
2 lb. bowl	
H.J. Holiday Juice	was 1.41
<b>orange drink</b>	<b>1.33</b>
64 fl. oz. btl.	
cheddar, old white or old coloured, random cuts	was 2.43
<b>Loblaws cheese</b>	<b>2.23</b>
lb.	
Loblaws marble, random cuts	was 2.39
<b>cheddar cheese</b>	<b>2.19</b>
lb.	



was 1.05 **save .46**  
**Heinz fancy tomato juice** 48 fl. oz. tin  
*Limit 4 per family*

# .59



was 3.58 lb. **save .90** lb.  
cut from Canada grade "A" beef  
**sirloin steaks**  
*Limit 3 sirloin steaks per family*

# 2.68

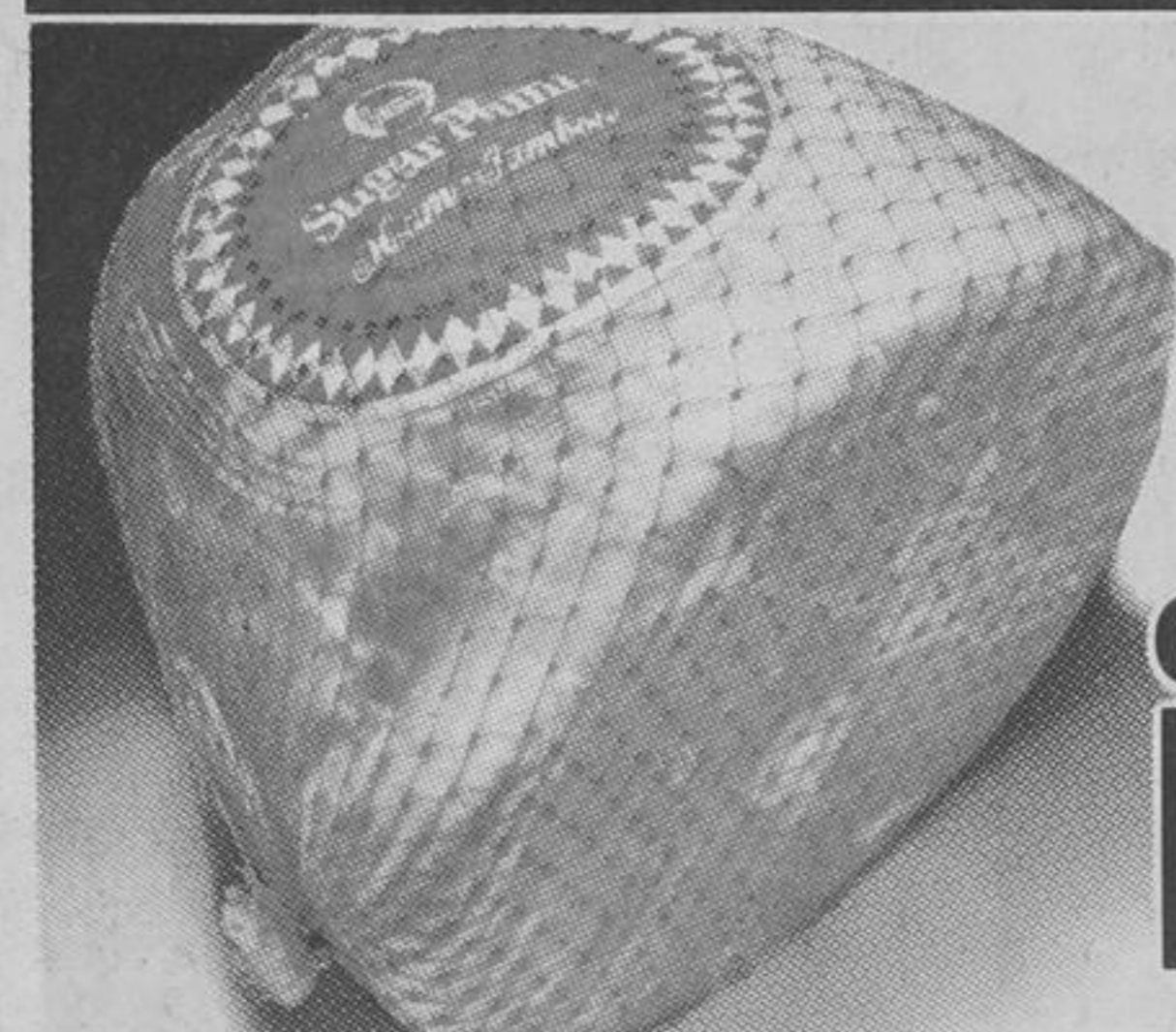
lb.



was 3.08 lb. **save .90** lb.  
cut from Canada grade "A" beef  
round end - bone in  
**rump roasts**

# 2.18

lb.



was 2.58 lb. **save .30** lb.  
**Loblaws or Swifts Sugar Plum cooked smoked ham** semi-boneless halves

# 2.28

lb.



was 1.48 lb. **save .20** lb.  
frozen Swifts deep basted pre-dressed young Canada grade "A"  
**butterball turkeys** all sizes in stock

# 1.28

lb.



was 1.48 lb. **save .20** lb.  
frozen pre-dressed Canada grade "A"  
**geese**

# 1.28

lb.



was 1.38 lb. **save .30** lb.  
frozen pre-dressed Canada grade "A" over 20 lb. size in stock  
**young turkeys**

# 1.08

lb.



was 3.78 lb. **save 1.00** lb.  
cut from Canada grade "A" beef  
**t-bone steaks (tail off)**  
*Limit 6 t-bone steaks per family*

# 2.78

lb.