

'Roofingese' in one easy lesson

With inflation skyrocketing into outer space, most people are doing all they can to keep the roof over their heads. Even with all that trouble, though, very few know anything about their roofs.

In order to maintain a proper shelter, roofs are virtually indispensable. They keep out rain, snow and other falling elements from the sky.

And, though they prohibit a good look at the stars at night, it is generally a better idea to keep your roof in good repair and forget about star-

gazing.

According to the CertainTeed Home Institute, to be able to talk intelligently about your roof, you should know the special language used by roofing contractors.

For example, the term "flashing" to some people may mean anything from taking pictures to indecent exposure not necessarily related to photography.

However, in "roofingese," flashing means something quite different—it's strips of metal or roofing material used in making watertight

joints on a roof, especially in valleys or where inclined and vertical surfaces intersect.

As you can see, it's very important to know the language of roofing. If you didn't, and your roofer mentioned that he was going to perform some flashing on your roof, you might get all dressed up or have him arrested.

And if your roofer tells you that your hip needs fixing, don't think he's been moonlighting at the hospital.

A hip, in roofingese, is an external angle formed by the intersection of two sloping ends of the roof; it's also a certain type of roof.

To save you further misunderstanding and possible embarrassment, here are some other roofing terms and their definitions from the CertainTeed Home Institute.

SQUARES—A roofing square is the amount of roofing materials required to cover a 100-square-foot area of roof surface. That's a ten foot by ten foot area.

EXPOSURE—This is the distance between the edge of one course of shingles and the edge of the next course. The exposure should not exceed the manufacturer's recommendation.

WEIGHT—When the roofing contractor refers to the weight of the shingle, he

is talking about how much the shingle weighs (per square). The general rule is that the heavier the shingle, the longer the life expectancy.

However, the exception to that rule is the new class of fiber glass-based shingles which are lighter shingles that give long-term protection. CertainTeed's Glasstex

fiber glass-based shingle, for example, has a light weight of only 260 pounds, yet it carries a long-lasting 25-year warranty.

Drywall & Plastering

Ceramic Tiles
Drywall Taping
Textured Ceilings & Walls
T-Bar Ceilings
Stuccoing & Complete Renovations
889-0707



WITH THE PRESENTATION
OF THIS AD **15% DISCOUNT**
APPLIES TILL APRIL 15/79
mobile steam carpet cleaning
BROADLOOM UPHOLSTERY
RUGS & DRAPES

881-2221

CHARGE ACCEPTED

ceramic
city
crafts

DUNCAN DEALER
N.C.M.A. TEACHER
GREENWARE
CUSTOM FIRING
CERAMIC
MACRAME SUPPLIES
GIFTS

MAKE BEAUTIFUL
ACCESSORIES
FOR EVERY ROOM IN YOUR
HOME - YOURSELF!!

Evening & Day Classes

"ENJOY AND EXPLORE
THE WORLD OF CERAMICS"

481 WATER ST.
BOTTOM OF MAIN ST.
NEWMARKET

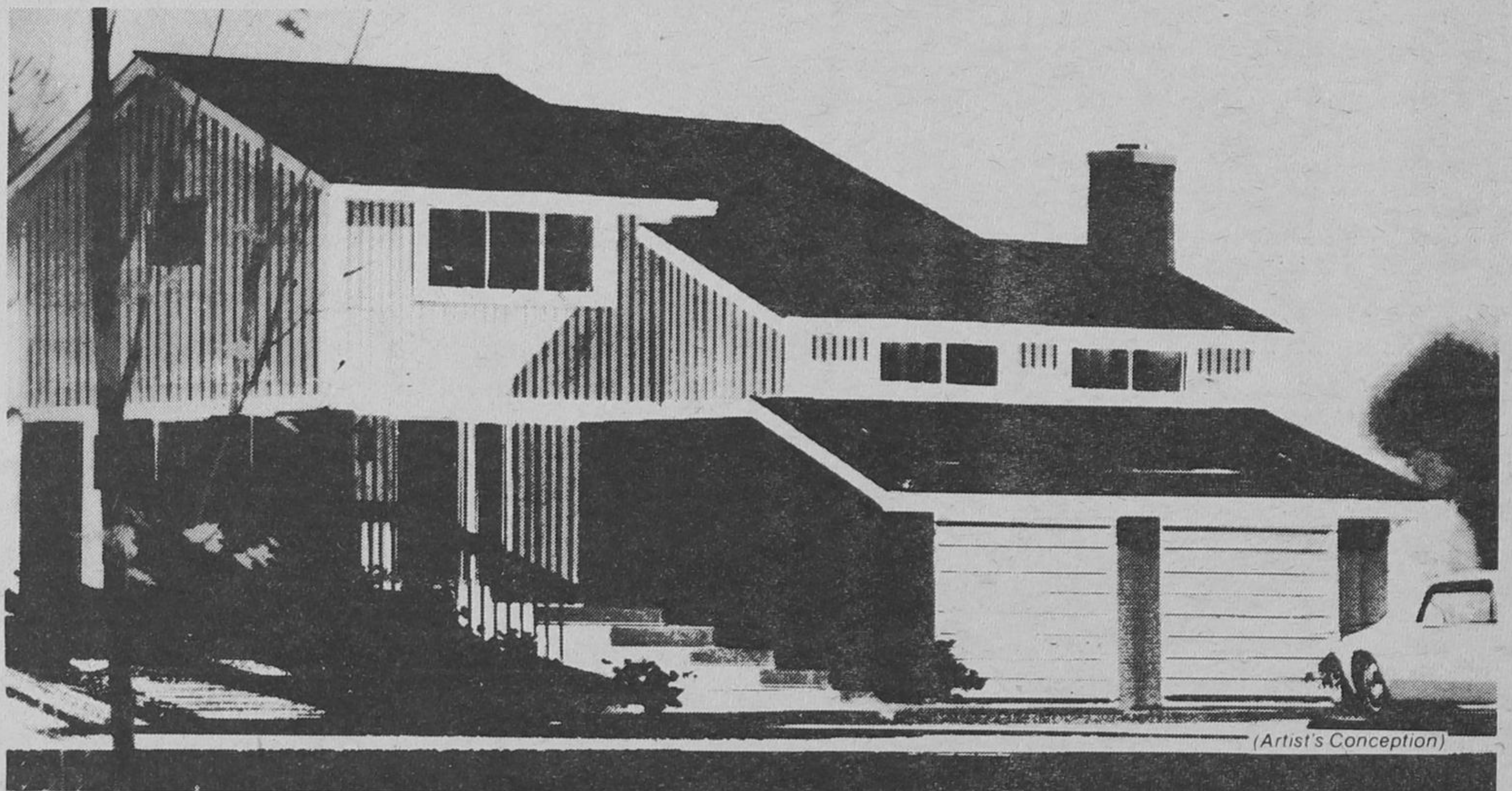
Call Now

895-1164

898-4911

895-6156

You almost own this new home already



(Artist's Conception)

The Highnote - 3 bedroom, big finished family room with wood-burning fireplace, centrally air-conditioned, as are all of our Cedarview homes - \$77,900

Take the equity in your home right now and put it to work, **use it** to buy a brand new Cedarview home for yourself and your family. Beautiful homes, with **all** the features you've been planning for your next home. Prices start at only \$72,900 for these fully detached homes.



consolidated
building

Cedarview is right on the North side of Davis Drive, in Newmarket, between Yonge and Woodbine. See the Consolidated Building Corporation homes in Cedarview today.

Cedarview

in Newmarket

Office Hours:
Daily noon to 6 p.m.

Phone 1-898-4176