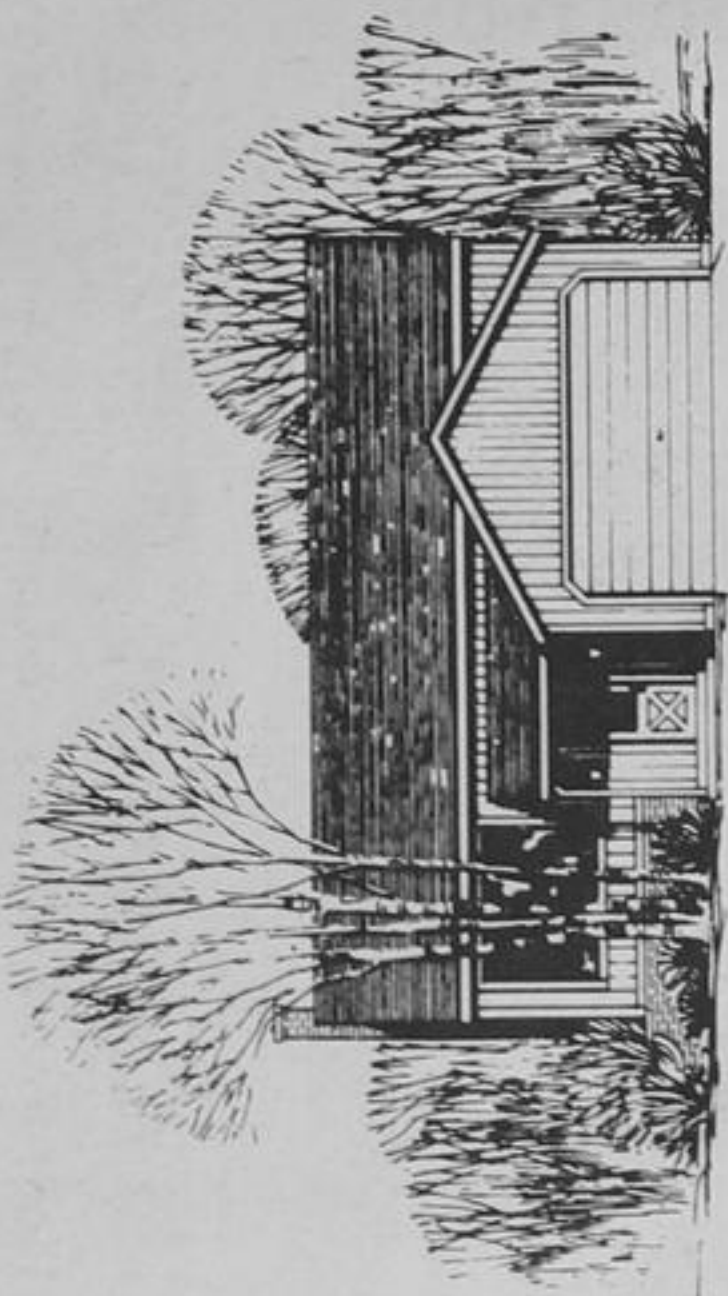


Artist's Conception

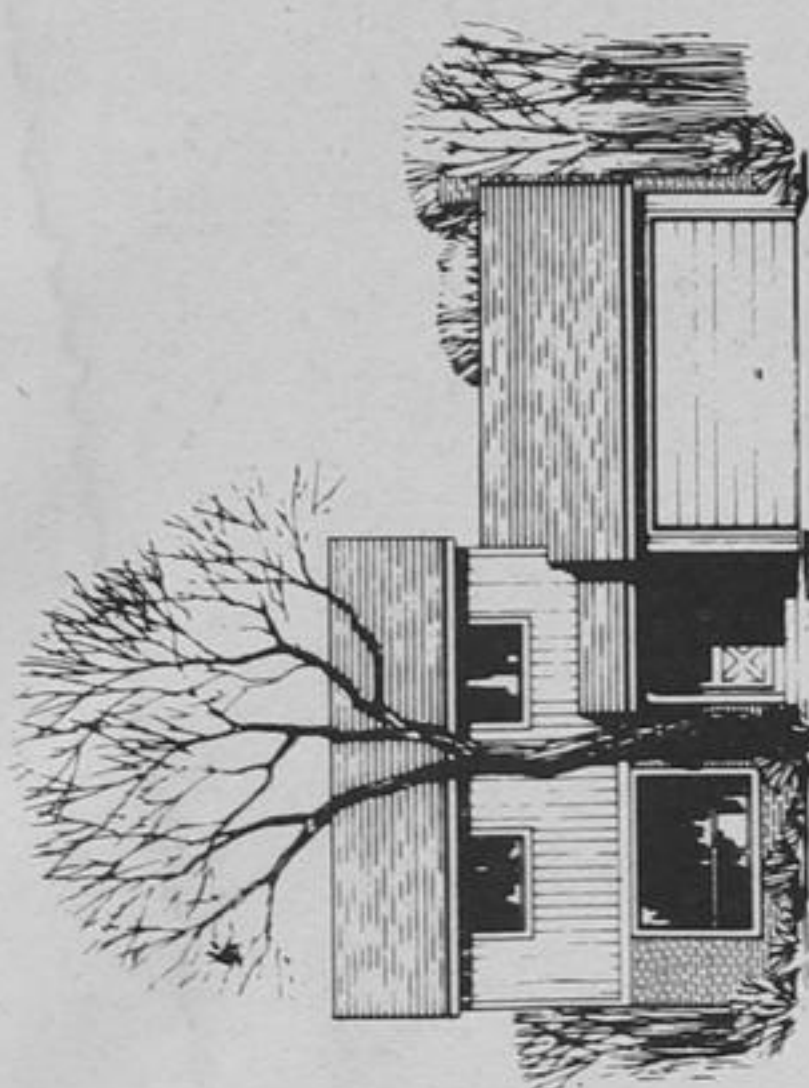


Essex II ^{BW-1153} **\$67,700**

Finished Floor Area 1,835 sq. ft. - 2-Car Garage with Basement Walk-out

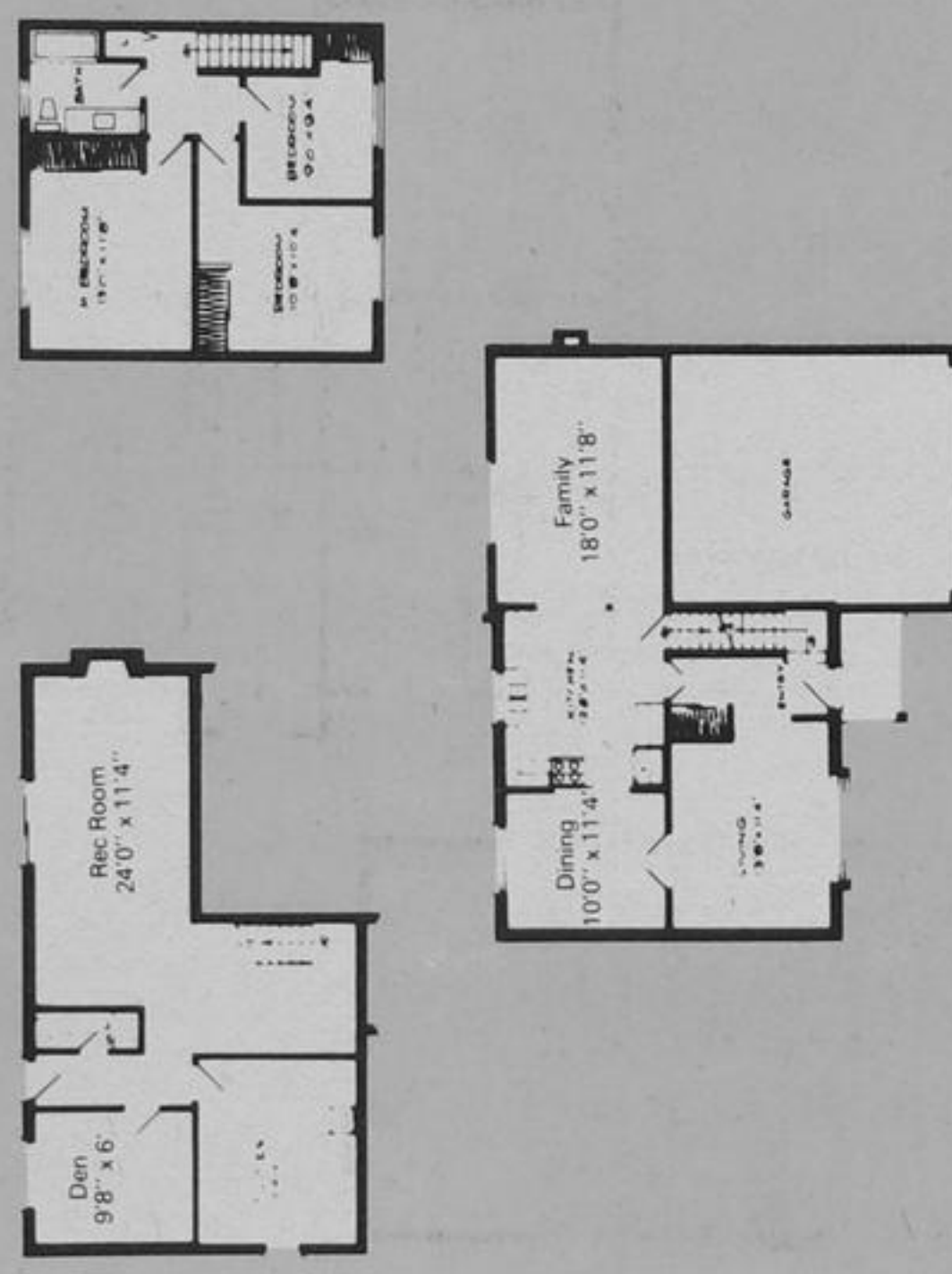


Artist's Conception

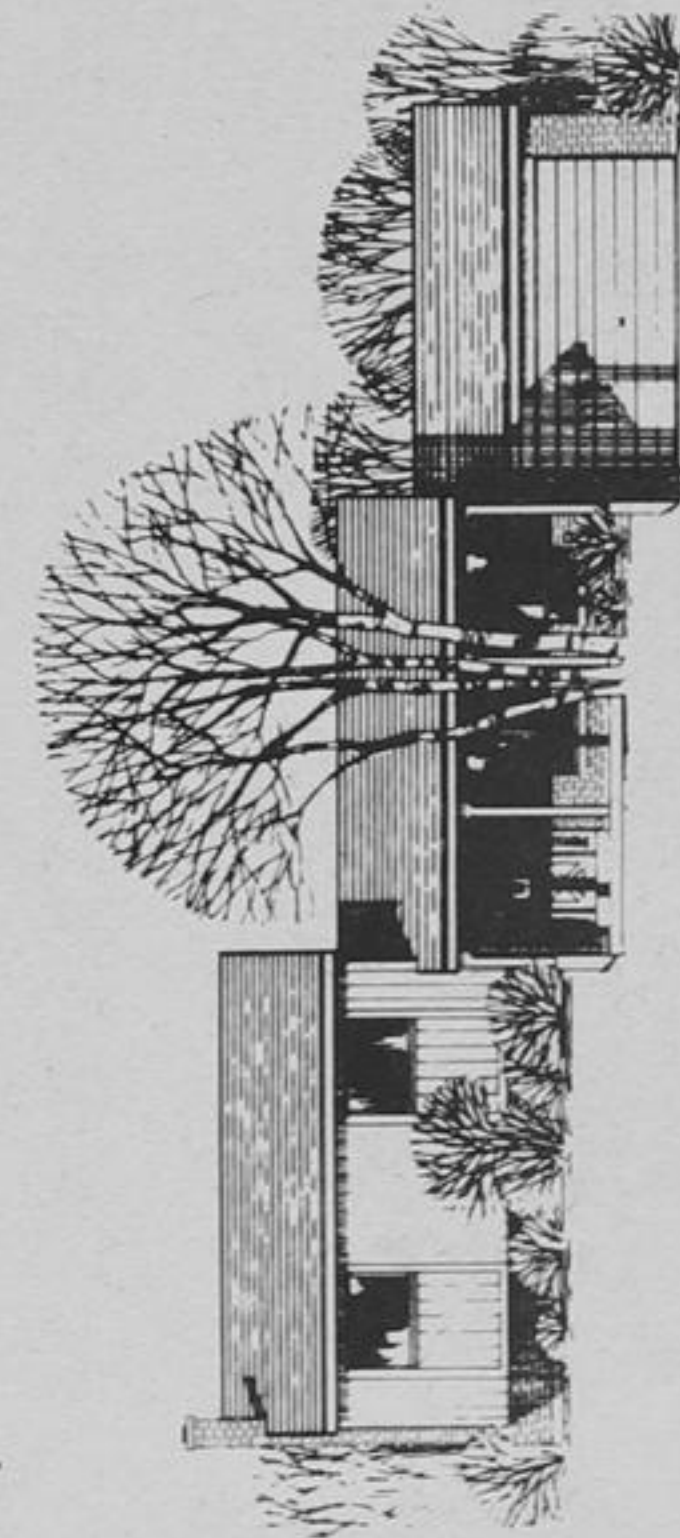


Lancaster II ^{TSW-1438} **\$74,700**

Finished Floor Area 2,058 sq. ft. - 2-Car Garage with Basement Walk-out

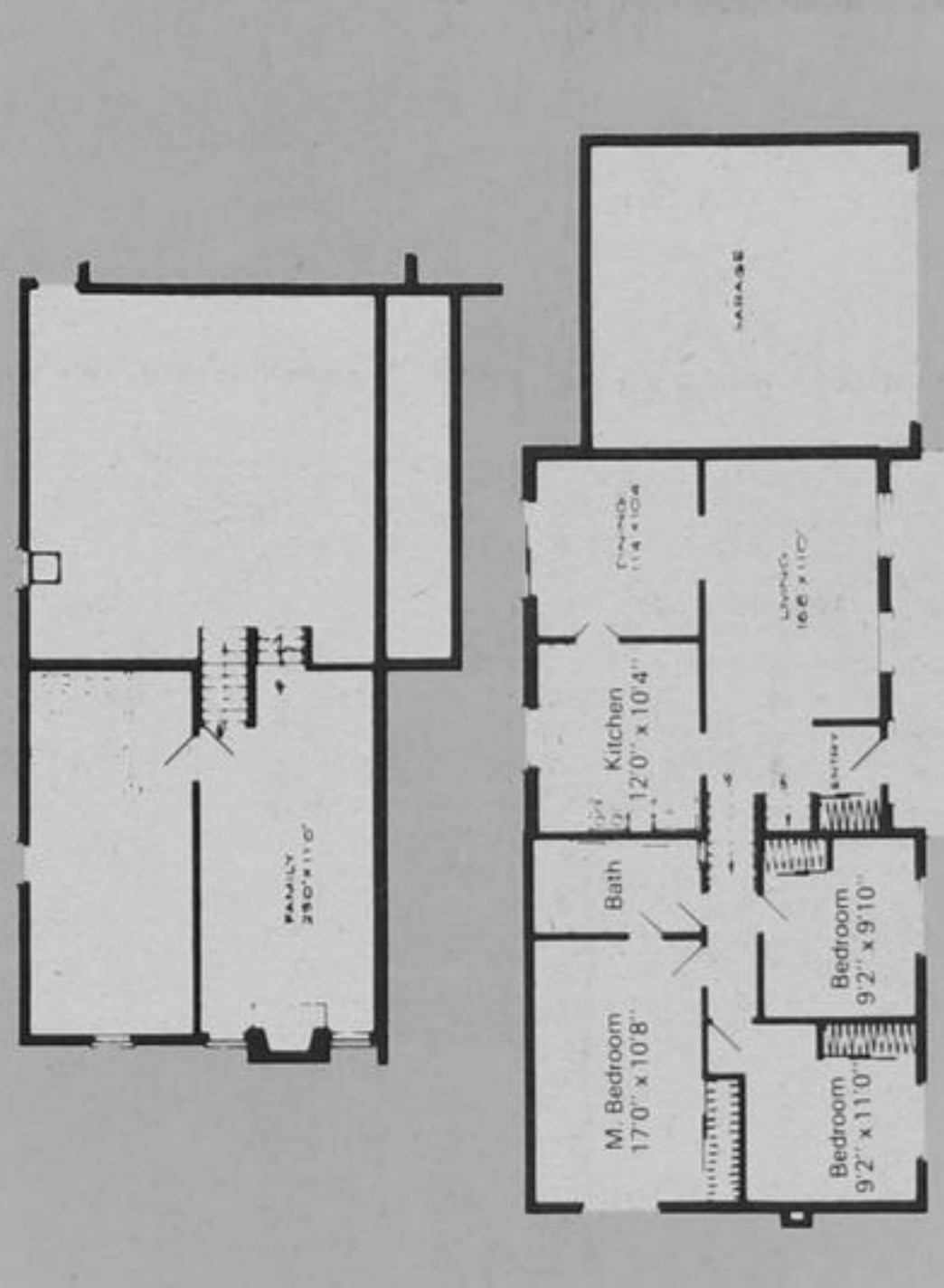


Artist's Conception



Erin ^{CS-1104} **\$62,700**

Finished Floor Area 1,440 sq. ft. - 2-Car Garage



Artist's Conception



Wellington ^{TSW-1800} **\$79,900**

Finished Floor Area 2,460 sq. ft. - 2-Car Garage with Basement Walk-out



Artist's Conception

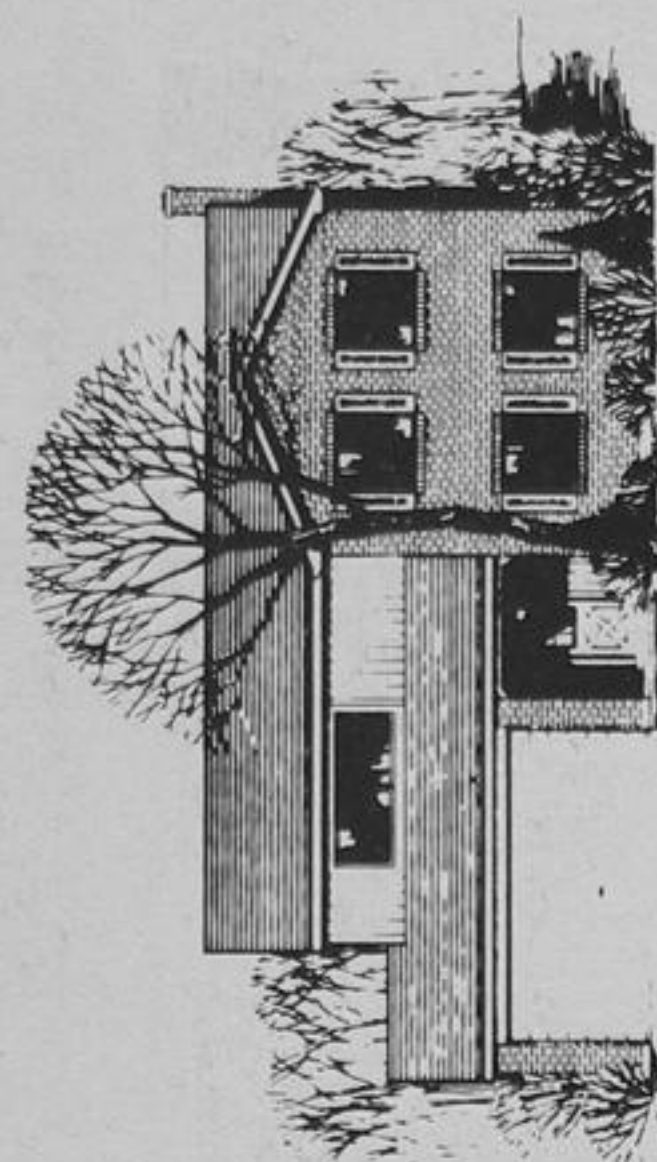


Dufferin II ^{BW-1182} **\$72,700**

Finished Floor Area 2,090 sq. ft. - 2-Car Garage with Basement Walk-out



Artist's Conception

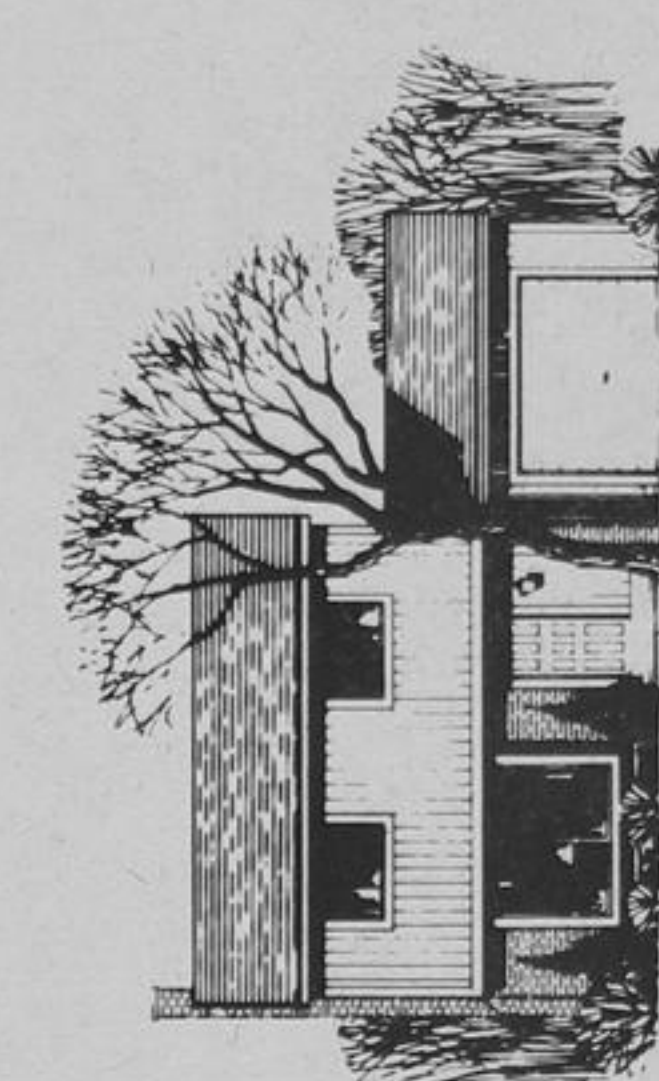


Windsor ^{BU-1152} **\$68,400**

Finished Floor Area 1,928 sq. ft. - 2-Car Garage



Artist's Conception



Norwood ^{TS-1227} **\$59,700**

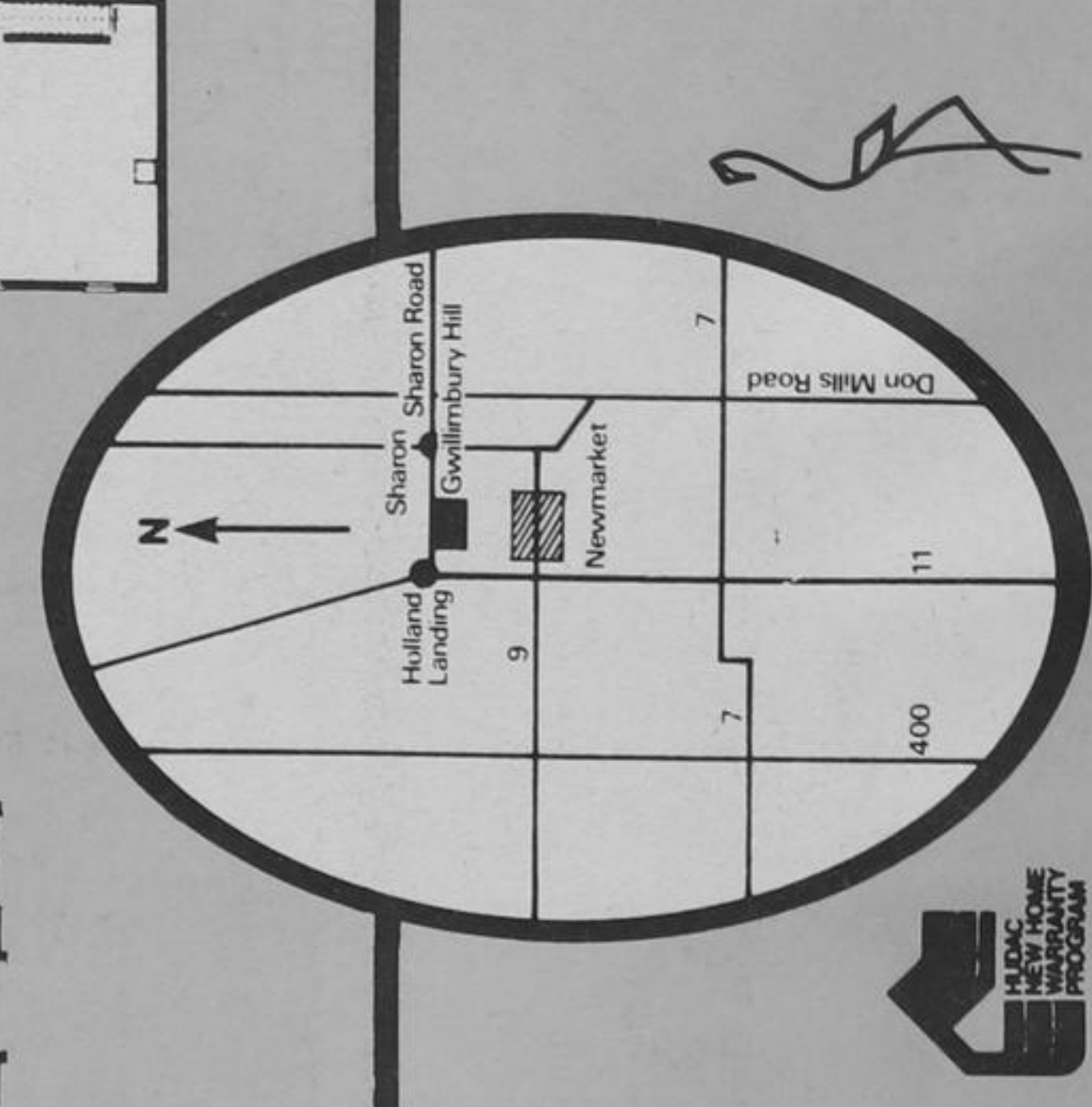
Finished Floor Area 1,227 sq. ft. - 1-Car Garage



Just twenty-two miles from the Yonge-Finch Subway there is an oasis of country living called Gwillimbury Hill. Situated within the rolling countryside of the Holland River Valley near Newmarket, Ontario, Gwillimbury Hill combines the tranquility of the country with the convenience of the city

- a variety of distinct home designs from which to choose
- modern conveniences and facilities minutes away
- Upper Canada Shopping Mall 2 miles from your door
- shopping plaza and school sites right in Gwillimbury Hill
- protected, conservation lands surround your home

Current prices are lower than comparable properties in area or Metro Toronto. Exclusive Agents: Len Pugh Real Estate Limited. 895-2427/881-4877 Toronto Line



Another Quality Home Development by Flamingo Construction Limited. North on Yonge Past Newmarket to Holland Landing 22 miles North of Yonge/Finch Subway