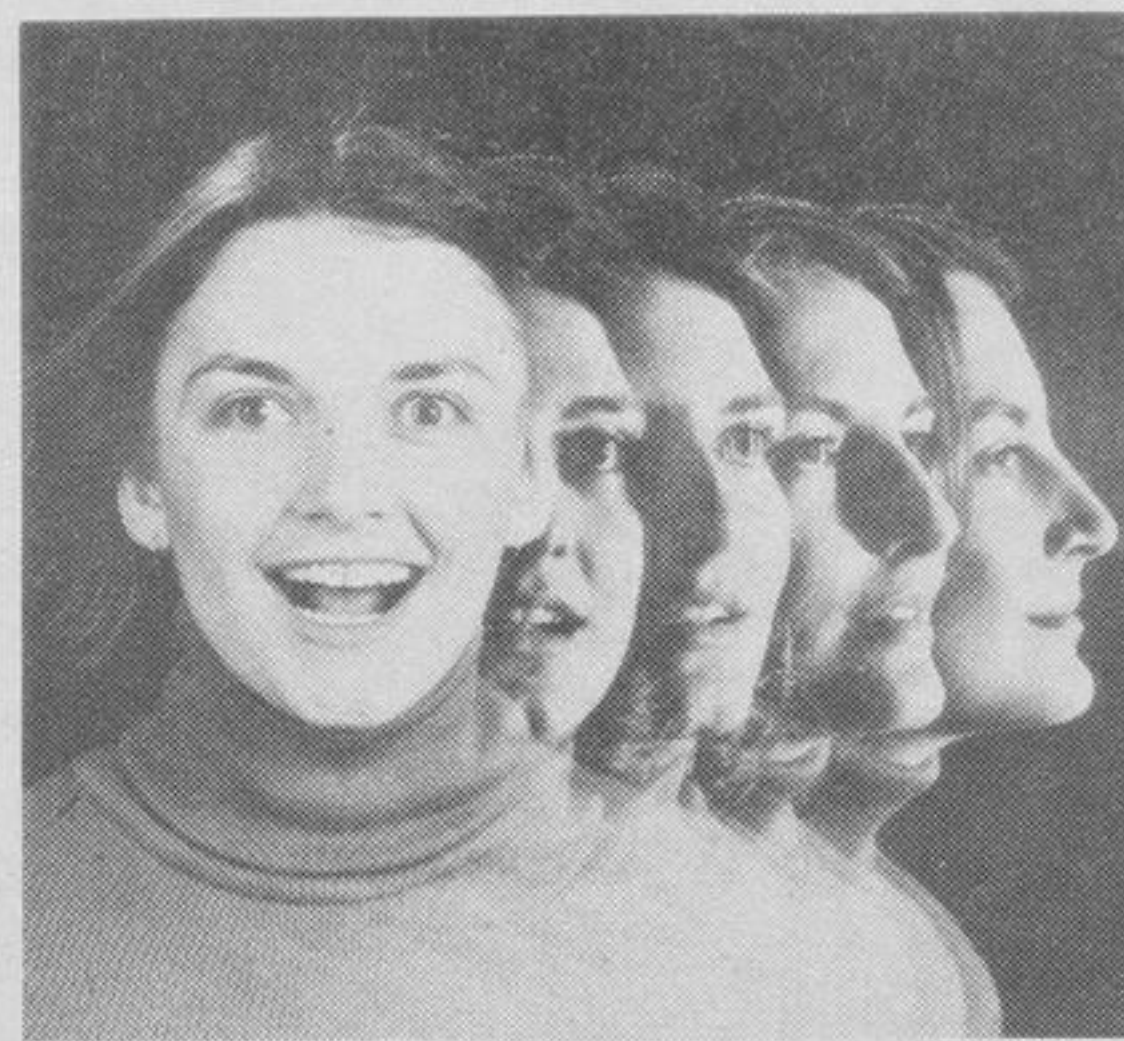


# turners



Simpsons restaurants cater to the dining pleasure of 21,000 people a day. Downtown, alone! From the fine Arcadian Court (licensed), and private rooms for groups, rooms for groups, through cafeteria, counter and take-out snacks, you'll enjoy dining at Simpsons.



## 3-piece weekender knit pant suit

**28<sup>99</sup>**

Simpsons Price, suit

A. A Spring-through-Fall weight polyester double-knit jacquard patterns. Single breasted jacket has front seaming for a great fit. Pull-on skirt and slacks have elasticized waist. Washable. Powder blue, mint green, or beige. Please state second color choice when ordering. 10-20.

PHONE ORDERS FILLED — 861-8111 — 24 HOURS A DAY

Or write: Simpsons Downtown, Subway Level. And all Simpsons Toronto Area Stores. SS616. Also Simpsons in London, Windsor and Kitchener.



## 'Dacron' 2-piece skirt suit

**19<sup>99</sup>**

Simpsons Price, suit

B. It's wrinkle-free 'Dacron' polyester — a smooth, lightweight knit. Short-sleeve top has turned back cuffs, V yoke and neckline, soft tie belt. A-line pull-on skirt has elasticized waist. Washable. Assorted prints in shades of light blue, beige or coral pink. Please state second color choice when ordering. 10-20.

Simpsons Toronto Area Stores Only.



## dotted-dress — a fashion find!

**12<sup>99</sup>**

Simpsons Price, each

C. Here's a dress as fresh as Springtime, with its small dots on smooth 100% polyester knit. And it's a best-selling style, with zip front, spread shirt collar, princess lines for figure flattery, and a soft tie belt. Easy-care wash 'n wear, too! White dots on navy, red or brown. 12-20 or 16½-24½. Please state second color choice when ordering.



## popular jumpsuits at pleasing prices

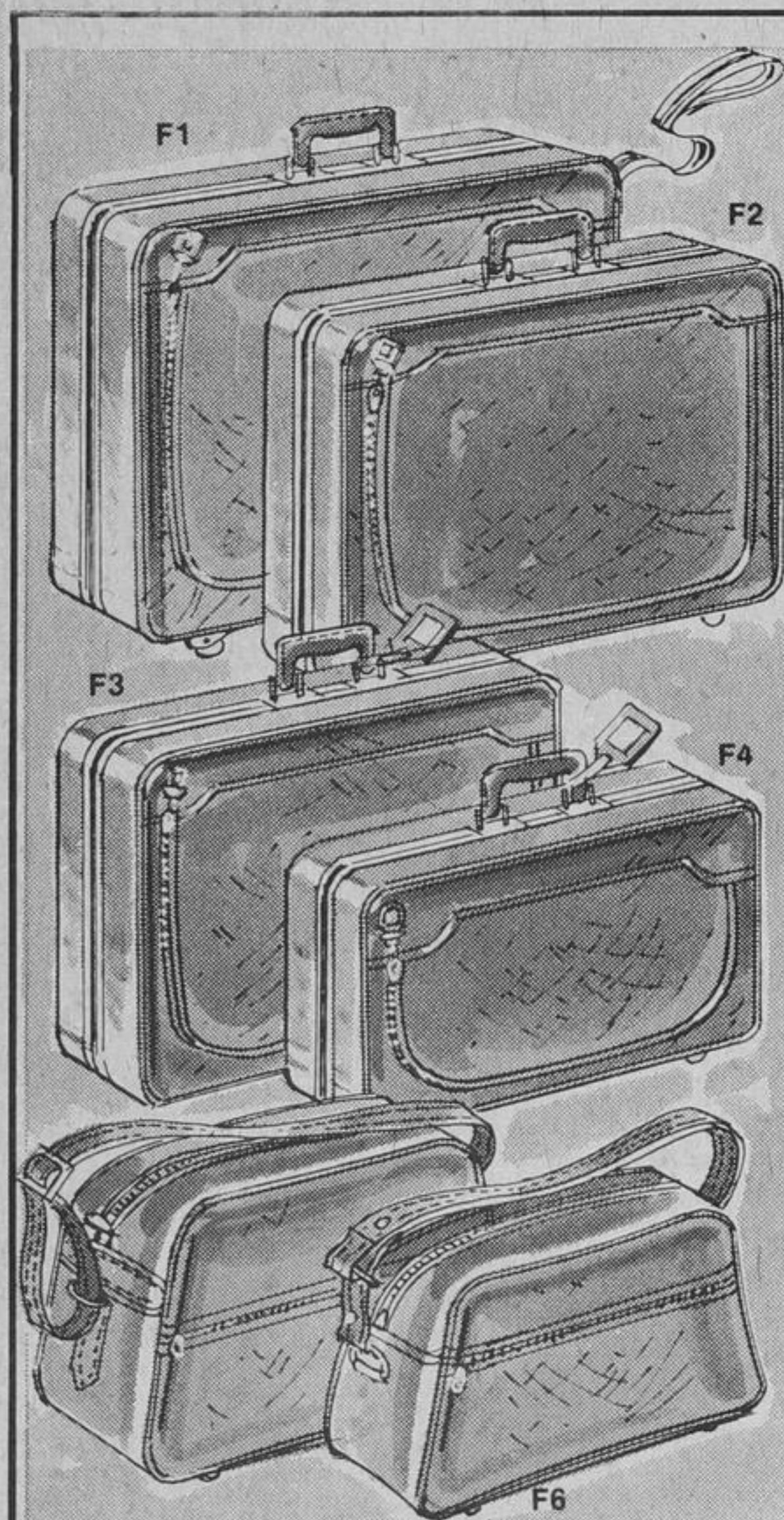
**18<sup>99</sup>**

Simpsons Price, each

Jump for joy, 'cause Simpsons has these polyester doubleknit jumpsuits with the terrific styling details for only **18.99!** Machine wash/dry with ease. **D. Button-front style** has seam details on front yoke and 2 front patch pockets. Elasticized (boxer style) waist at back and in-seam ties for easy comfort. Brown, black or beige. 10-20. **E. Zip front style** has V-shaped yoke, short cuffed sleeves, interesting front pockets and a soft tie belt around the seamed waist. Brown, navy or medium blue. 10-20. Please state second color choice.

PHONE ORDERS FILLED — 861-8111 — 24 HOURS A DAY

Or write: Simpsons Downtown, Subway Level. And all Simpsons Toronto Area Stores. SS617. Also Simpsons in London, Windsor and Kitchener.



## reduced 30% women's 'Fleetwing' softside luggage in discontinued colors

Lightweight plywood frame is reinforced with an outer aluminum rail. Fabric-backed expanded vinyl covering has a leather look but sponges clean. Color co-ordinated lining. Durable nylon zipper, steel core handle. Cranberry red, medium blue or light tan. Not all sizes in all colors at all stores.

	Simpsons Regular Price,	Clearing, each
F1. 29" pullman .....	\$75. ....	<b>52<sup>50</sup></b>
F2. 26" pullman .....	\$62. ....	<b>43<sup>40</sup></b>
F3. 24" pullman .....	\$54. ....	<b>37<sup>80</sup></b>
F4. 21" weekend case ..	\$46. ....	<b>32<sup>20</sup></b>
F5. 17" tote bag .....	23.50. ....	<b>16<sup>45</sup></b>
F6. 15" tote bag .....	17.50. ....	<b>12<sup>25</sup></b>

### SHOP IN PERSON ONLY

Simpsons Downtown, Second Floor. And all Simpsons Toronto Area Stores. SS436

Phone Simpsons 24 hours a day, write, or shop in person!