

Time for indoor gardening

region gardener

By Marion Hohener

Starting this week, we're going to be talking mostly about house plants, so let's discuss some of the basic requirements for the successful indoor gardening.

One of the more important needs of in-the-house plants is moisture. With our central heating, and cold outdoors, we tend to have very dry indoor environments.

For plants that have smooth or shiny leaves, misting is a good way of putting some moisture into the air. For ferns especially, this is essential.

Plants that have furry or hairy leaves don't like to be misted, but a humidified home is still going to be better for them than a very dry one.

If you don't have either a furnace or a portable room humidifier, set out dishes of water for your plants.

You can even try setting plants on top of pebbles or stones in a dish of water. This water, the air around them is kept moist, and the pebbles lift the plant so the pot isn't always in direct contact with the water.

And this brings us to watering requirements.

Few plants thrive on being kept constantly wet. (An umbrella, or swamp, plant is one of the few exceptions.)

For most plants, a weekly or bi-weekly watering is sufficient. It allows the pot to begin to dry out just a little before the next watering. Too much water can kill most plants.

It's a good idea to water from the bottom most of the time, so water-soluble salts don't get a chance to build up in the soil. Most plants find this condition toxic enough to kill them, or to at least keep them droopy and unattractive.

Water from the top about once a month, to wash any salts that may have built up back down through the soil where they can't harm roots.

Another important point in this area where most water is very hard: if you're watered is chemically softened, this could add even more toxic salts to your plants.

Get water from a bypass valve to water your plants with. (Usually, water in at least one tap in the basement is bypassed by the water softener.)

Or run out all of the softened water in the tank once in a while, and collect enough unsoftened water to water your plants for a couple of weeks. This way, the water will have a chance to get to room temperature, and for the chlorine in the water to evaporate out.

Light is a variable requirement of most plants, but generally, in this climate, in winter, most plants need all the light we can give them.

Most need to be in a window. Some require a sunny exposure, and some are happy in a northern window that gets indirect light.

Some plants are even happy away from a window as long as they're in a very light or white-coloured room.

If you have questions about houseplants, write to Marion Bluegrass, c-o The Liberal, Box 390, Richmond Hill.

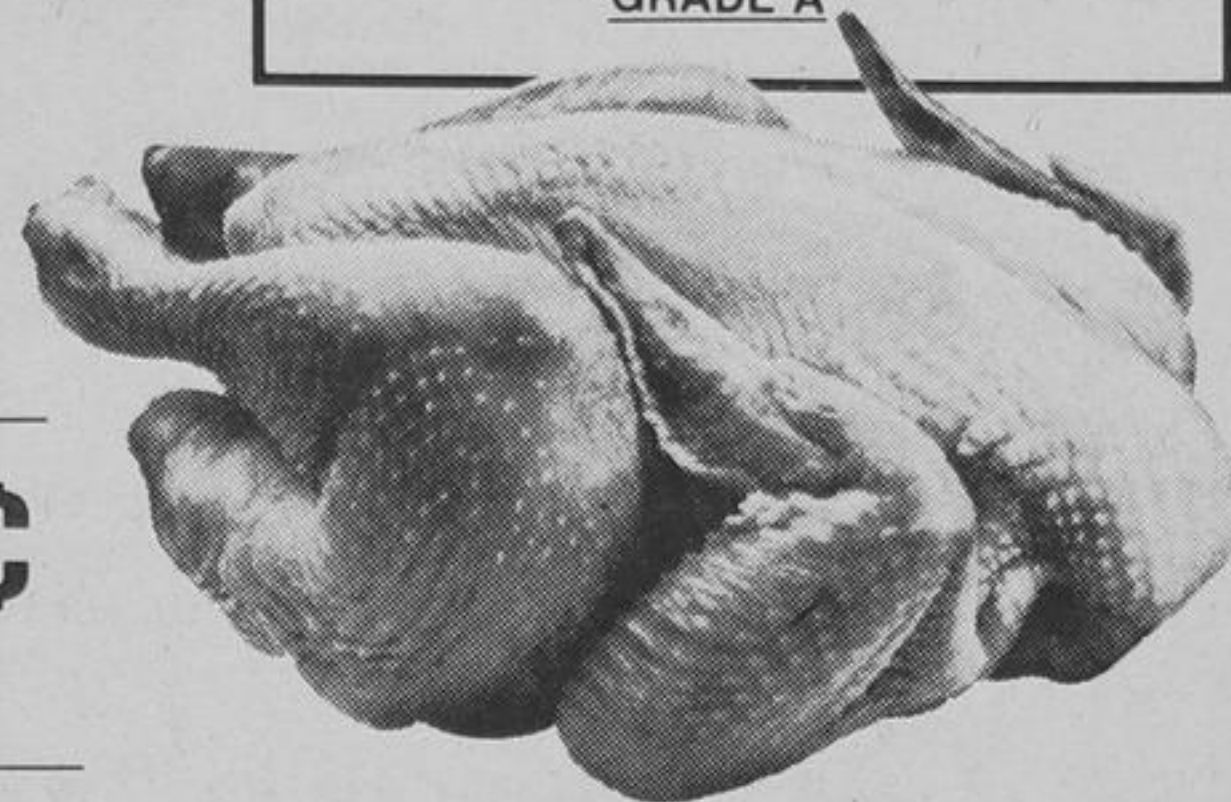
3 ways to save.

Miracle leads the way.

1 Low prices every week on items you use everyday.

Predressed
FRESH FRYING CHICKENS
2-3 LB. SIZE
54¢
LB
"GRADE A"

Canada Grade A
LARGE WHITE EGGS
DOZEN
79¢



2% Partly Skimmed
Fresh Milk
3 qt. bag or jug
(Plus deposit on jug)

1.19

Granulated
White Sugar
2 kg pkg.

69¢

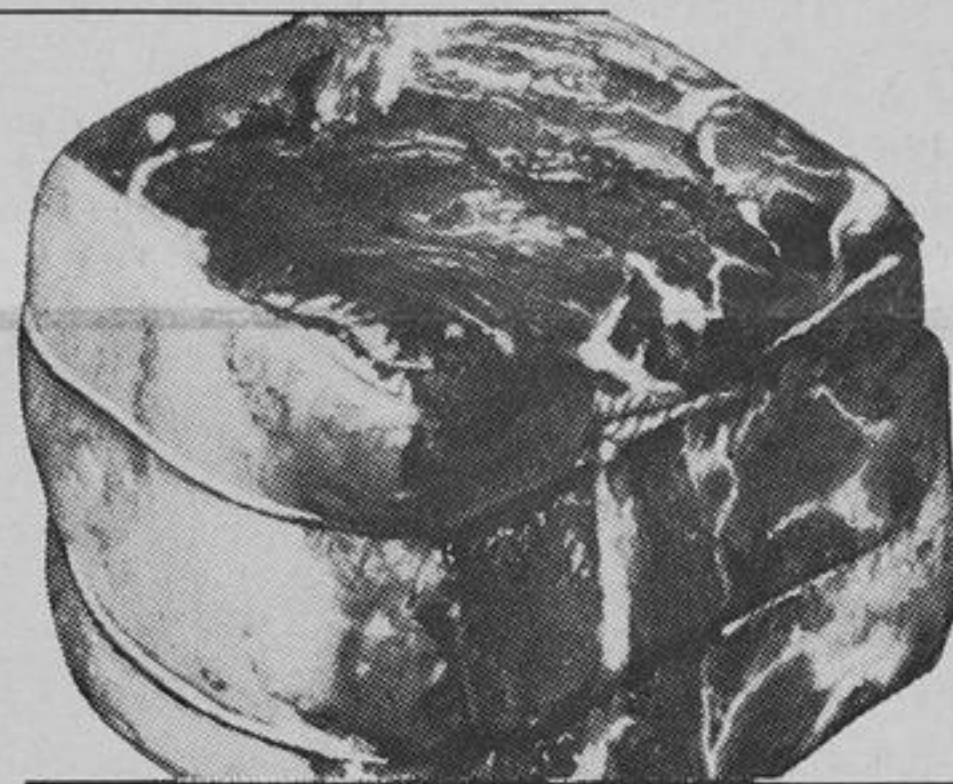
HOMOGENIZED FRESH MILK
3 qt. bag or jug (Plus deposit on jug) **1.29**

Carnival
Soft Margarine
1 lb. tub

39¢

Champlain
White Sliced Bread
24 oz. loaf

29¢



2

Low prices every week on popular cuts of Canada Grade A Beef.

Round Bone Shoulder or
SHORT RIB ROASTS

Cut from Canada "GRADE A" Beef

68¢
LB.

Blade Bone Removed
BLADE ROASTS

Cut from Canada "GRADE A" Beef

68¢
LB.

Bone-In
Rump Roasts

Cut from Canada "GRADE A" Beef

1.18
LB.

Sirloin Steaks

Cut from Canada "GRADE A" Beef

1.48
LB.

The King of Roasts
Prime Rib Roasts

Cut from Canada "GRADE A" Beef

1.22
LB.

T-Bone or
Porterhouse Loin Steaks

Cut from Canada "GRADE A" Beef

1.58
LB.



Liquid
Palmolive Detergent
24 fl. oz. btl.

79¢

Mira Mart Concentrated
Unsweetened from Florida
Frozen Orange Juice
large - 16-2/3 fl. oz. tin

49¢



Ontario Grown Fancy Grade
CORTLAND APPLES
5 LB. POLY BAG

99¢

Liquid
JAVEX BLEACH
128 FL. OZ. JUG

88¢

3

Really low prices on weekly specials!

Tiffany Asst. Colours
Bathroom Tissue
4 roll pkg.

88¢

Frozen Beef, Chicken, Turkeys
Brookpark Meat Pies
8 oz. pkg.

29¢

LOW COST TRAVEL

Australia from \$1195⁰⁰
New Zealand from \$1295⁰⁰
Nairobi from \$895⁰⁰
South Africa from \$850⁰⁰
Singapore from \$950⁰⁰
Jakarta
Kuala Lumpur

PACKAGE TOURS AVAILABLE

GLOBE AIR TRAVEL
11 ADELAIDE ST. WEST
TORONTO 368-4871

ONT. LIC. No. 1449998

miracle

Food Mart

PRICES EFFECTIVE UNTIL NOV. 2, 1976. WE RESERVE THE RIGHT TO LIMIT QUANTITIES.