

**Tweed and suede**

The male factor at Heintzman House was George Lorber in a herringbone tweed with suede inserts and detailing — from Johnny Carson sport suit — wool Kent Clothes, Richmond Hill.



**Silver romance**

This silver jersey gown brought shimmering evening romance to the Hillcrest Mall fashion show. From Fairweather — A Fashion Council Store (Big Steel).



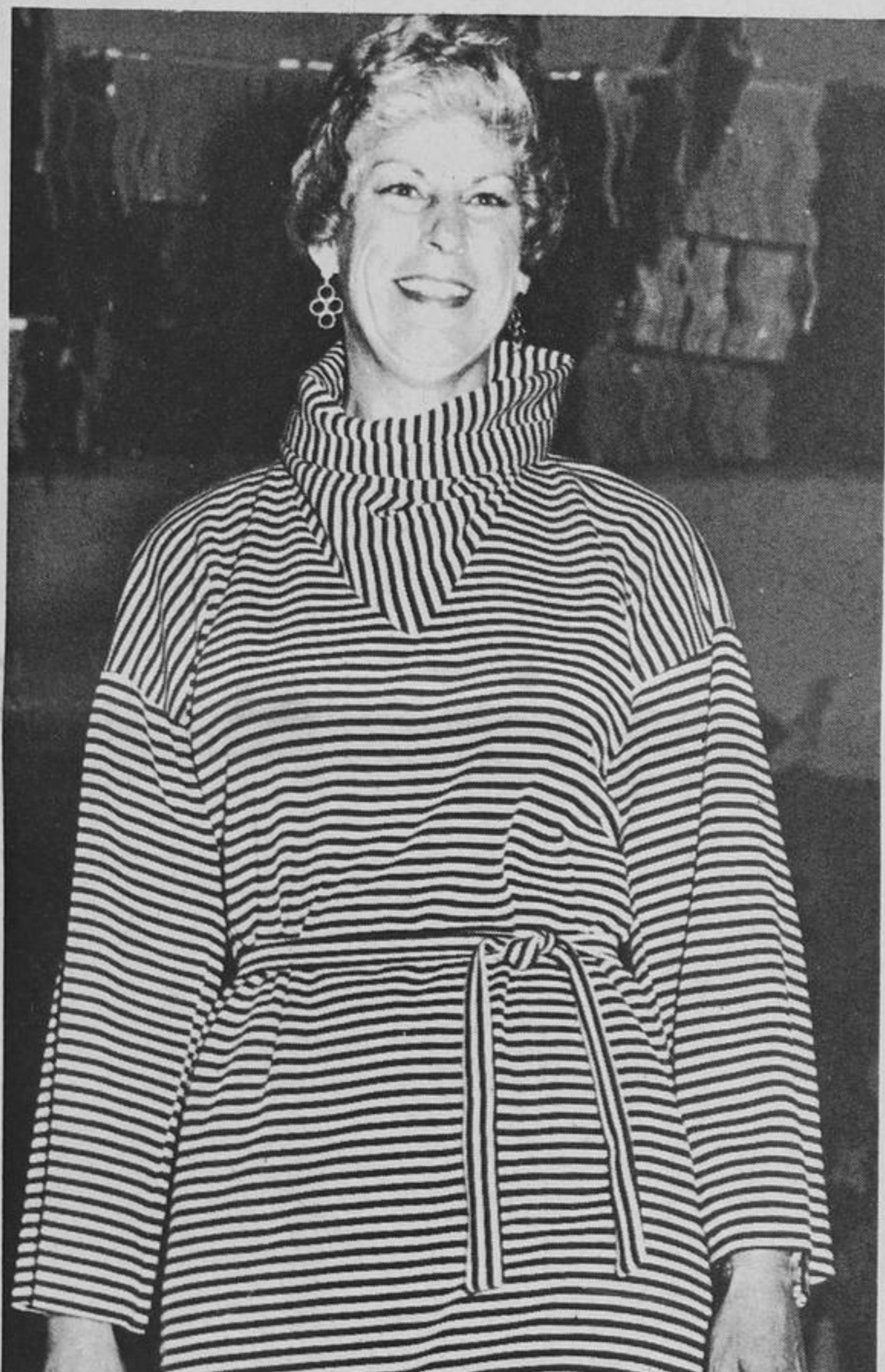
**Rabbit poncho**

Ponchos and hats are fashionable this season. Above, model Lidka poses in a French rabbit poncho and matching fur hat for the Ladies Auxiliary at Heintzman House.



**For evening**

A floral gown from D'Allaird's Ltd. is modelled by Joan Armstrong at the Hillcrest Mall fall fashion show.



**Newest neckline**

Carol Flynn of Clemson Crescent models at Maple Community Centre for the Maple Guides and Brownie Mother's Auxiliary. She is wearing a waist-tied jersey dress featuring this season's newest neckline — the cowl.



**1910 Girl Guide**

Diane Albin of Netherford Road models a 1910 Girl Guide uniform during the intermission at a fall fashion show sponsored by the Maple Guides and Brownie Mothers' Auxiliary at Maple Community Centre. The Show entitled Fall Fashions featured a selection of sport and evening wear from Patricia White of Toronto.

**...for fall**

By Denise Romberg

RICHMOND HILL — Fashion this season is really a mixed bag of day and evening wear to be chosen to fit both lifestyle and budget.

The four recent York region fashion previews attest to that. Sportswear and casual evening wear presented by the Richmond Hill West District Association Girl Guides featured 24 fall fashions from Warwick House in Richmond Hill.

Patricia White of Toronto provided the fashions for Maple Guide and Brownie Mothers' Auxiliary.

The Heintzman House Ladies Auxiliary held a fashion preview at Heintzman House.

The fashion show at Hillcrest Mall showed a wide selection of garments from shop merchants located in the Mall.

**Sweater layers**

In answer to the ensuing fuel crisis, layers and layers of sweaters are coming into vogue.

Turtlenecks, this season's newest — the

cowed neck and even the crewneck of the 50's fame — are used to adorn the comfortable, bulky sweater picture shown in patterns and stripes.

Outer wear is no longer just a coat, but could be a blanket coat, a vinyl windbreaker or a poncho.

Hats are very much in the picture too this fall in suedes, furs and knits and in some cases adorned with matching scarves.

**Beating inflation**

Those looking to beat inflation will still find themselves right in fashion with last year's slacks, a blouse or sweater topped off with a tunic dress or tabard.

Accessories are becoming increasingly important this year as shoes and boots in the earth tones compliment any ensemble.

Waists are wrapped in belts in every width and texture.

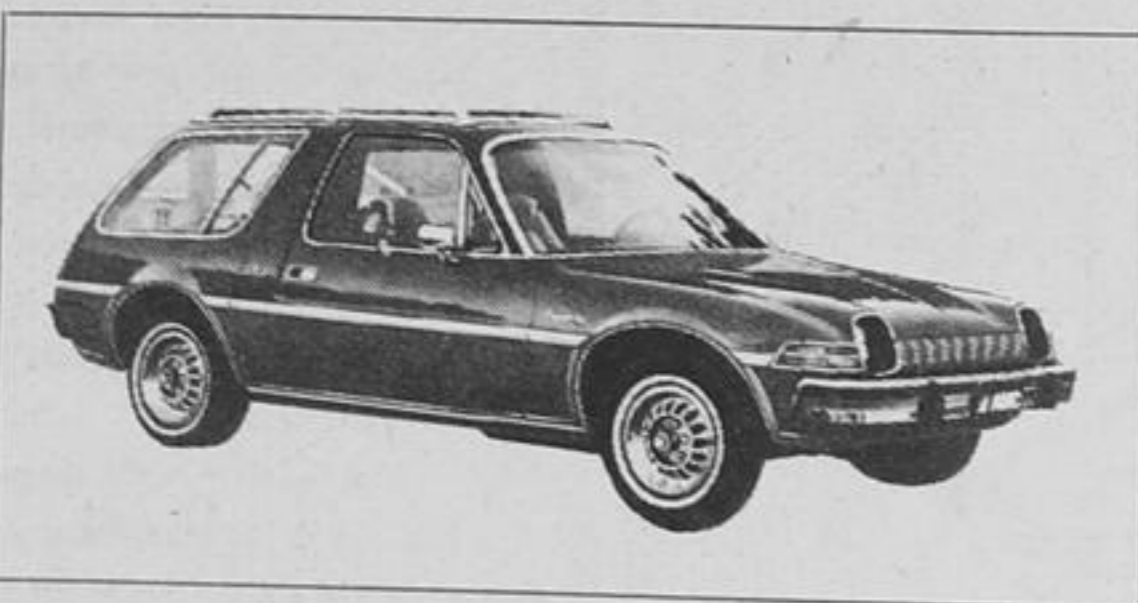
Leather, rope and fabric belts are buckled in gold and silver tones as well as this season's tortoise shell buckles.

Some belts are accompanied by matching purses which can be worn right on the belt.

**Baker's Sales & Service (1968) Ltd.**

*Cordially invite you to attend*

**THE 1977 MODEL PREVIEW SHOWING OF ALL THE NEW AMC & JEEP VEHICLES TUESDAY, OCT. 5 THUR. - SAT. OCT. 9.**



AMC PACER WAGON



GREMLIN X AMC

NEW FOR '77 BUYER PROTECTION PLAN II: FEATURING A FULL 24 MONTH/24,000 MILE ENGINE/DRIVE TRAIN WARRANTY.

**BAKER'S SALES & SERVICE (1968) LIMITED**

NEAR HILLCREST MALL 9144 YONGE STREET

889-1189 or 223-8066 RICHMOND HILL ONTARIO

**VALUE! MEN'S WINTER JACKETS REG. TO \$45 SALE \$29**



Just in time for the chilly winter! Warm casual jackets from Canadian makers in youthful styles and colours that look sharp with jeans or casual apparel. The selection includes zipper front wind and rain repellent jackets in corduroy and wool plaid cloths that have borg, sherpa or orlon pile linings for added warmth. Sizes 36 to 42, shop early for best selection.

**JACK FRASER**

HILLCREST MALL, RICHMOND HILL 884-0933

CHARGE/MASTERCARD ACCEPTED

Official Apparel Supplier For Team Canada