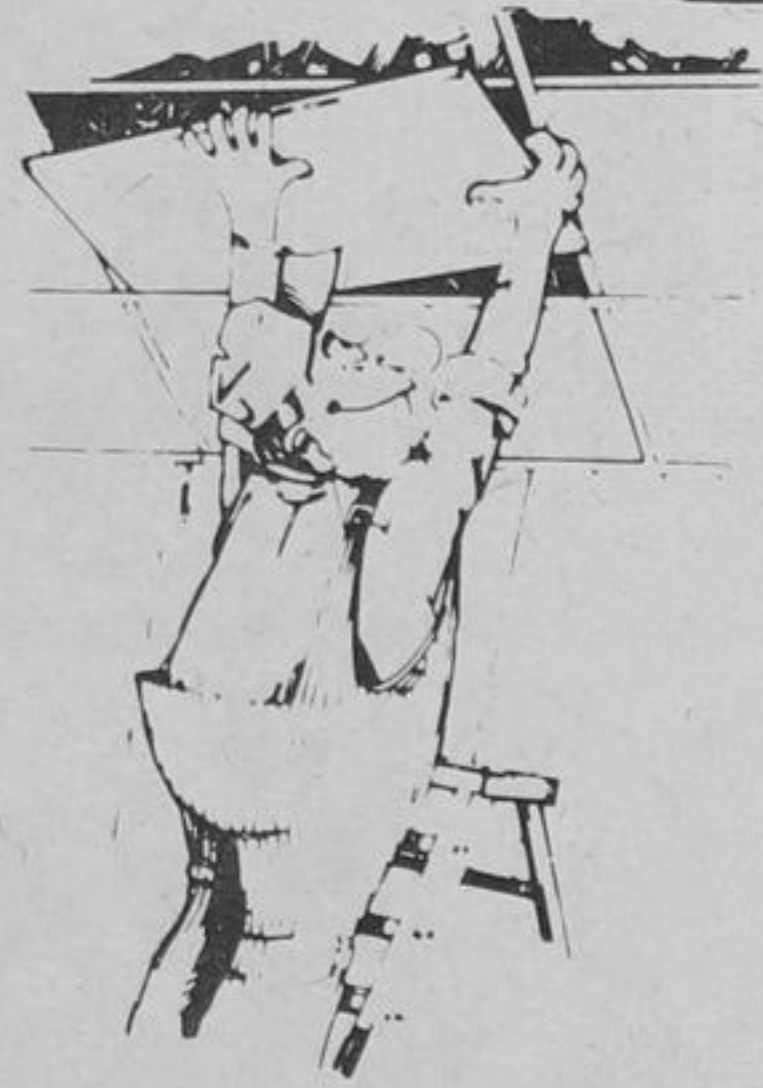


SAVEWAY

LUMBER & BUILDING SUPPLIES

**CASH & CARRY
MEANS SAVINGS
FOR YOU!!!**



SUSPENDED CEILING SYSTEM

This grid system for ceilings is made of steel with a baked white enamel finish. Ideal for lowering high ceilings, hiding water and heating pipes, ductwork etc.

12' MAIN BEAM	1.90 ea.	12' WALL ANGLE	1.30 ea.	4' CROSS TEE	.64 ea.	2' CROSS TEE	.32 ea.
---------------	----------	----------------	----------	--------------	---------	--------------	---------

PANELLING



Forget yearly repainting or redecorating by installing prefinished panelling that is rich in colour and woodgrain. The panels listed below are only a sample of the many beautiful overlay and print finish panels presently in stock at Saveway.

4' x 8' Mahogany	4.99	sheet
4' x 8' Driftwood	5.29	sheet
4' x 8' Knotty Cedar	6.44	sheet
4' x 8' Southern Pecan	6.89	sheet
4' x 8' Coachman Oak	6.99	sheet

LAY IN PANELS

These Panels are 2'x4'

Plain White	Micro Perforated	Fissured
1.59 ea.	1.87 ea.	2.20 ea.

2' x 4' LIGHTING PANELS

Prismatic (Opal)	Cracked Ice (Clear)	Louvre Egg Crate (White)
3.75 ea.	3.75 ea.	8.10 ea.

CEILING TILE



Attractive ceiling tiles are 12"x12"x1/2" and come 64 to the carton.

Plain White	11.75 ctn.
Micro Perforated	15.75 ctn.
Whirl	17.75 ctn.
Mosaic	17.75 ctn.
Fresco	17.75 ctn.
Coral	17.75 ctn.
Crystal	17.75 ctn.

FLUORESCENT LIGHT FIXTURES

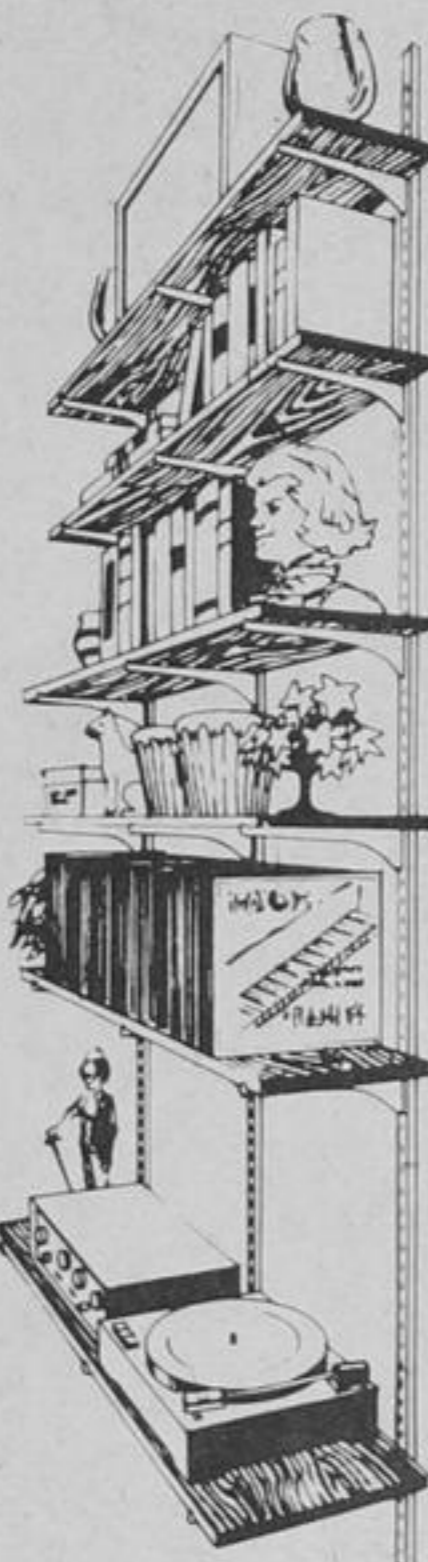
2' Single Bulb Unit	4' Single Bulb Unit	4' Double Bulb Unit	4' Double Bulb Unit (with lens)
6.49 ea.	9.35 ea.	17.75 ea.	23.85 ea.

Bulbs for above units are extra

wall standards shelf brackets and shelving

GIVE YOU SHELVES LIKE THESE IN MINUTES!

Transform any bare wall into an attractive shelving unit. Ideal for any room in the house. Shelf brackets are adjustable. Makes re-arranging simple.



SHELF BRACKETS			
	NATURAL	COPPER	BLACK
6"	.66	.67	.67
8"	.68	.75	.75
10"	.74	.79	.79
12"	.75	.87	.87

SHELF STANDARDS			
	NATURAL	COPPER	BLACK
12"	.53	.57	.57
24"	.75	.87	.87
36"	1.03	1.32	1.32
48"	1.40	1.66	1.66
60"	2.05	2.40	2.40

SHELVING			
	UNFINISHED		
	24"	36"	48"
6"	.95	1.50	1.74
8"	1.35	2.04	2.71
10"	1.69	2.54	3.29
12"	2.04	3.06	4.07

SHELVING			
	PREFINISHED		
	24"	36"	48"
6"	1.25	1.85	2.45
8"	1.65	2.43	3.25
10"	2.05	3.05	3.95
12"	2.45	3.65	4.85

SPRUCE STRAPPING & STUDS

1x2 and 1x3 spruce strapping is ideal for use when applying panelling, ceiling tile, ceiling squares, tileboard, etc.

1x2-8'	.26 ea.	1x3-8'	.38 ea.
2x4-8'	1.16 ea.		

WOOD STEP LADDERS

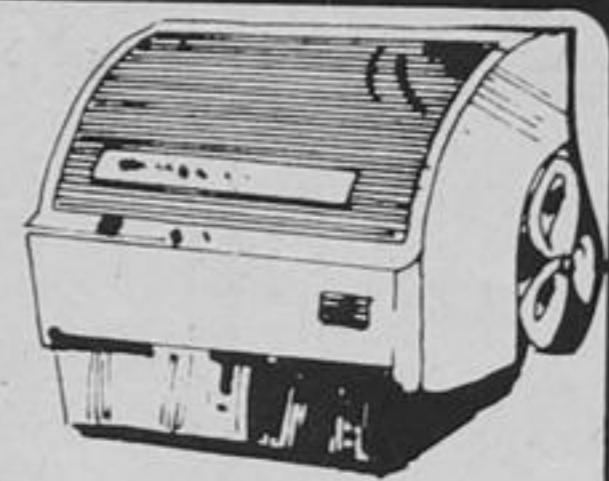
5'	10.99 EA.	6'	12.49 EA.
----	-----------	----	-----------

SPECIAL PURCHASE

Rough Back Cedar Fencing Lumber is dressed on 3 sides.

1 x 6 - 4'	1 x 6 - 5'	1 x 6 - 6'
76¢ ea.	95¢ ea.	1.14 ea.

39.95 ea.



AIR POWER HUMIDIFIER

Conserves energy, as it requires no electricity. Easy to install, maintenance free.

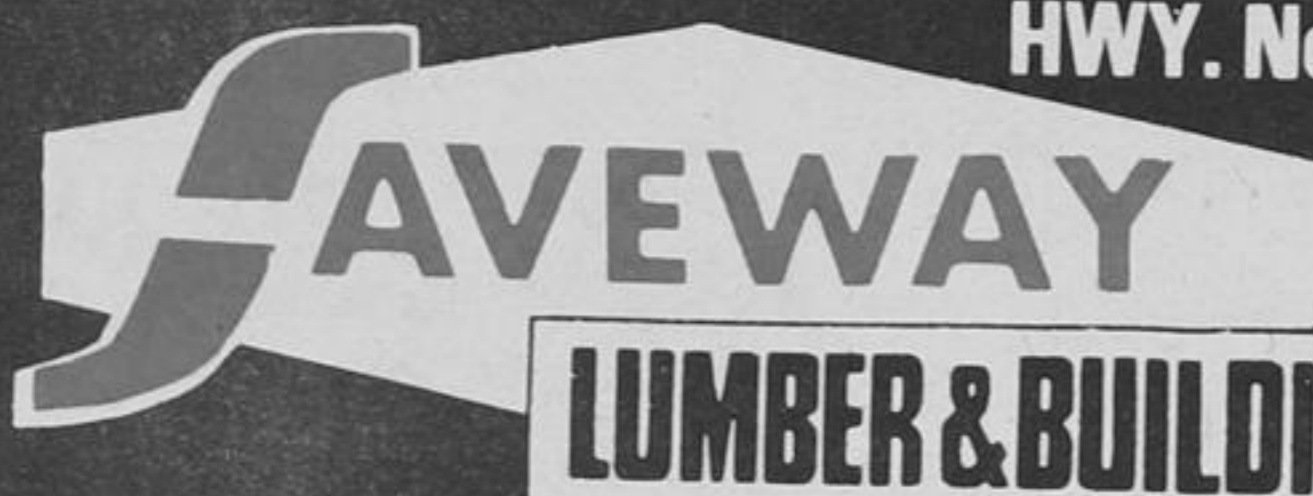
WE WELCOME



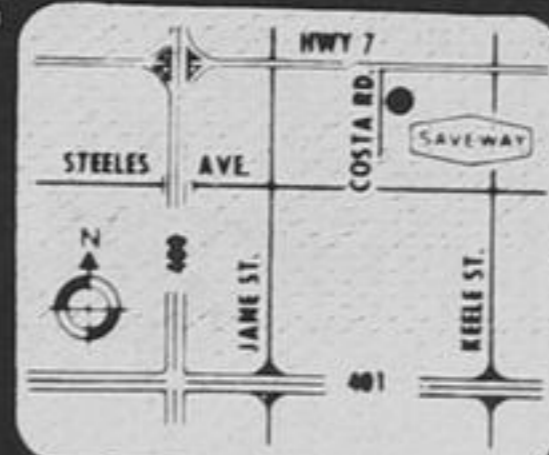
STORE HOURS

Monday-Wednesday
8 a.m. to 6 p.m.
Thursday & Friday
8 a.m. to 9 p.m.
Saturday 8 a.m. to 5 p.m.

HWY. No. 7 & COSTA RD.



669-2297



Plenty of FREE Parking

THESE PRICES IN EFFECT WED. OCT. 6 to TUES. OCT. 12 OR WHILE SUPPLIES LAST AT OUR HWY. No. 7 & COSTA RD. STORE.