

SAVEWAY

**CASH & CARRY
MEANS SAVINGS
FOR YOU!!!**

LUMBER & BUILDING SUPPLIES

DOOR ENTRANCE SYSTEMS

Saveaway has available (on a special order basis) a complete line of wood and metal residential door entrance systems. These door and frame packages are completely assembled, ready to set in a prepared opening. They include the door frame, sill, weatherstripping and a prehung quality door bored for a Weiser lockset. Sidelites are an optional extra.

WHY BUY A DOOR ENTRANCE SYSTEM?

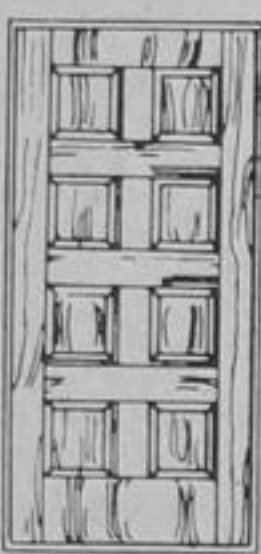
Door entrance systems are complete packages. When you purchase the factory assembled system the jamb is cut and fitted, the outside casing is installed, the door is expertly hung, weather-stripped and bored for the Weiser lockset.

The systems are factory built and assembled by highly skilled personnel. All fitted edges are 'true'. Clearances always consistent and weatherstripping properly designed and installed.

Only number 1 quality material is used in their construction. Wooden doors are

made of 1 3/4" B.C. Cedar or Mahogany Slab; Metal doors are made of high grade steel shell with a foamed in insulating core. Polyflex weatherstripping is installed on the side jambs and header, while the 'under door' sweep makes an effective weatherseal on the bottom of the door. The door frame is made of the best kiln dried Ponderosa Pine, with a standard 45/8" jamb. Weiser Lockset is included. Aluminum Clad thermosill is standard while a kiln dried Red Oak sill is optional.

WOOD DOOR ENTRANCE SYSTEMS



The doors for this system are made of beautiful 1 3/4" B.C. Cedar or Mahogany Slab. They are available in a variety of popular designs and sizes. All are bored to accept standard Weiser locksets and are prehung on three strong 4" x 4" hinges which operate smoothly behind the weatherstripping. Come in to our store at Hwy. 7 & COSTA RD. and we'll be happy to give you an estimate on the wood door entry systems of your choice.

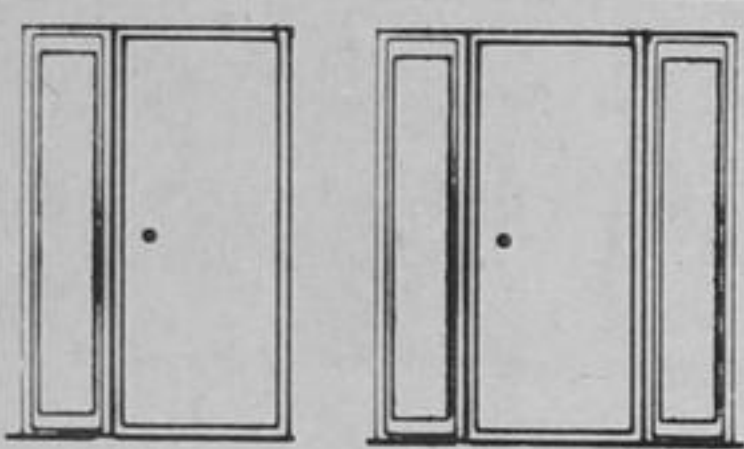
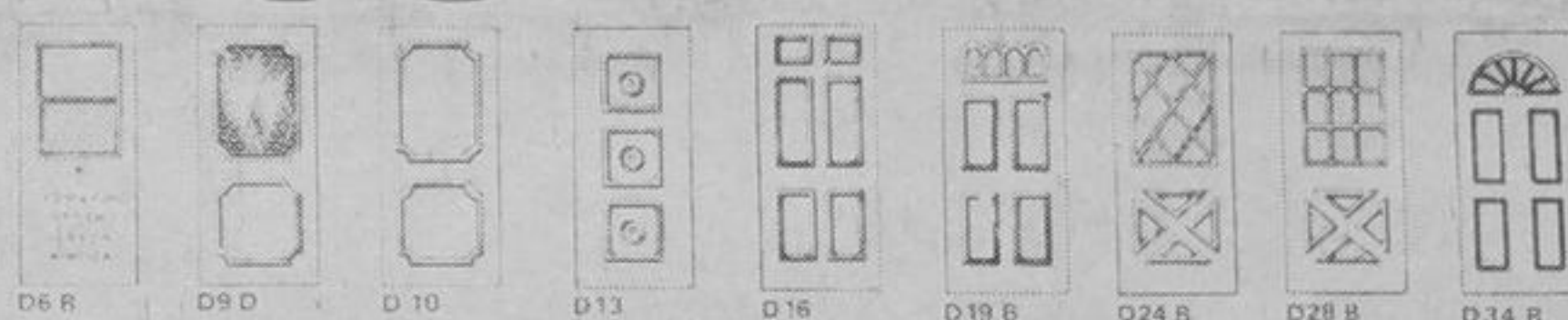
From **130⁰⁰**



METAL DOOR ENTRANCE SYSTEMS

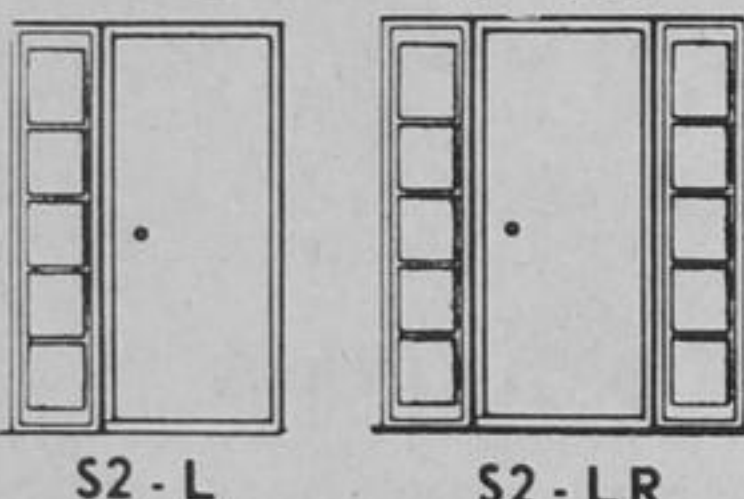
The main advantage to metal doors is that no combination storm doors are required. The doors are made of insulated primed steel and are available in various popular designs and sizes. They are bored to accept Weiser locksets and are prehung on three strong 4" x 4" hinges which operate smoothly behind the weatherstripping. They are warp free and prime painted. Drop into the Saveaway store at Hwy. 7 & COSTA RD. and we'll be happy to give you an estimate on the door system of your choice.

From **165⁰⁰**



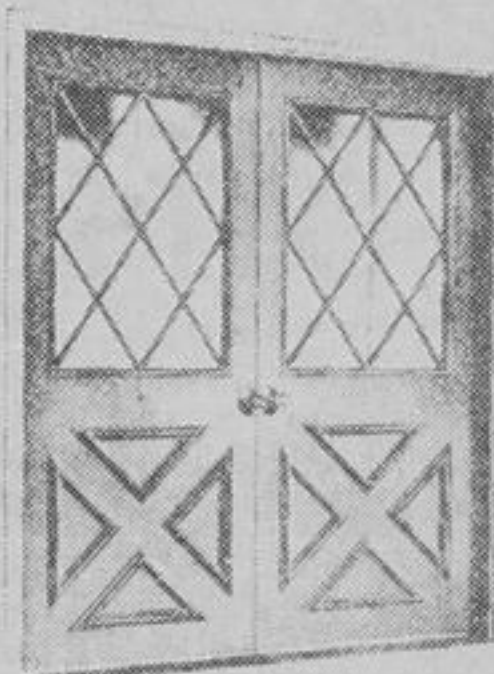
SIDELITES

15" sidelites for either or both sides of your door system are supplied in a complete frame with the door and sidelites installed.



All Sidelites are glazed and sealed with insulating glass and are available in a clear or fluted obscure glass design (illustrated below, here) or White Vinyl horizontal design bars are provided for multi-light designs.

DOUBLE DOOR SYSTEMS



Both metal and wood door systems are available with two doors (illustrated here, below). All specifications for the single door systems are duplicated and a second door is hung and bored for a dummy lockset. A weatherstripped astragal is attached to the non active door and equipped with flush bolts top and bottom. Check your local Saveaway store at Hwy 7 & COSTA RD. for a free estimate on the Double Door System of your choice.

SASHLESS PICTURE WINDOWS

Feature selected ponderosa pine frame, 3 3/4" jamb with top section insul glass, bottom section double glazed with screen. Assembled units come complete with hardware, weatherstripping and outside casing installed.

Rough Opening Size

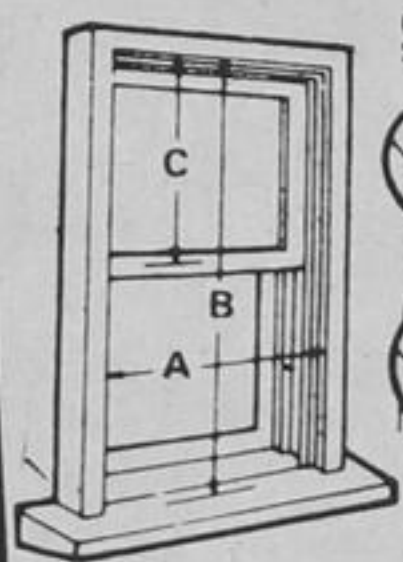
52" x 70"

78 1/2" x 70"

Price
114⁹⁵

182⁵⁰

ALUMINUM STORM



FOR PRICING

Add (a) & (b) (for united inches), when ordering. Bring all three measurements to SAVEWAY

Aluminum storm windows will not only help lower your fuel bills, but will give your home that new modern look.

UNITED INCHES	STANDARD FINISH	WHITE FINISH
0-38"	14.89	21.19
38-1/8"-49"	15.80	22.60
49-1/8"-59"	17.60	24.50
59-1/8"-74"	20.05	27.15
74-1/8"-87"	23.95	29.75
87-1/8"-100"	27.95	33.75
Each additional united inch	86¢	86¢

How to Measure for Double Hung Storm and Screen Windows.
a) The width between side casings.
b) The height from the sill to the bottom edge of the top casing.
c) The height from the bottom edge of the top casing to the centre of the meeting rail.

VINYL SLIDERS

Feature all white vinyl frame 45/8" jamb with hardware, and trim, double glazed with screen, weatherstripping and outside casing installed. A No. 1 quality window at a first rate price.

Rough Opening Size

31 1/4" x 24 1/2"

35 1/4" x 36 1/2"

47 1/4" x 36 1/2"

47 1/4" x 42 1/2"

59 1/4" x 36"

59 1/4" x 42 1/2"

Price

35.95

52.35

66.50

71.95

73.50

82.75

WE WELCOME



STORE HOURS

Monday Wednesday
8 a.m. to 6 p.m.

Thursday & Friday
8 a.m. to 9 p.m.

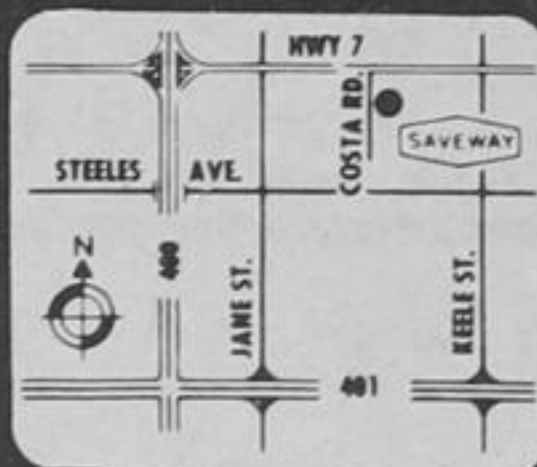
Saturday 8 a.m. to 5 p.m.

SAVEWAY

LUMBER & BUILDING SUPPLIES

HWY. No. 7 & COSTA RD.

669-2297



Plenty of
FREE
Parking

THESE PRICES IN EFFECT WED. SEPT. 8 to TUES. SEPT. 14 OR WHILE SUPPLIES LAST AT OUR HWY No. 7 & COSTA RD. STORE