

# SAVEWAY

## LUMBER & BUILDING SUPPLIES

# HWY 7 & COSTA RD.

JUST SOUTH OFF HWY. No. 7



Can't come in?

CALL **669-2297**



## METAL STORAGE SHEDS

Ideal for storing your lawn mower, garden tools, bicycles, etc.

MODEL	APPROX SIZE	PRICE
H 65	6' x 5'	<b>85<sup>15</sup></b> Ea.
H 85	8' x 5'	<b>99<sup>95</sup></b> Ea.
G 87	8' x 7'	<b>161<sup>95</sup></b> Ea.
G 109	10' x 9'	<b>234<sup>95</sup></b> Ea.
A 1011	10' x 11'	<b>285<sup>95</sup></b> Ea.

### ALUMINUM SIDING

Make your house look years younger by installing this top quality aluminum siding (with the backer board applied). Will not twist, warp, rust or absorb water. Guaranteed against peeling, blistering, flaking, chipping or splitting under normal weather conditions for 20 years.



**60<sup>00</sup>** Bundle

Bundle covers 88 sq. ft.

### WROUGHT IRON RAILING



for both indoor and outdoor decorating

4' Section **8<sup>42</sup>** ea.  
6' Section **12<sup>95</sup>** ea.

WE STOCK A COMPLETE LINE OF WROUGHT IRON ACCESSORIES

### FENCING LUMBER

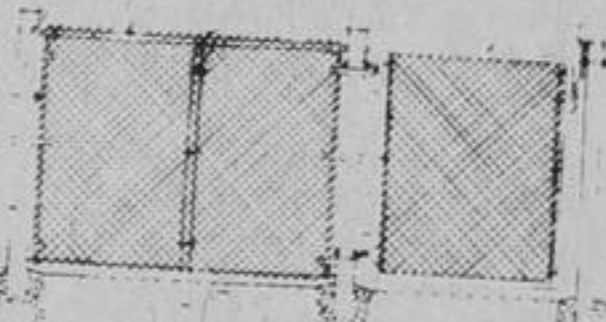
CEDAR	SPRUCE
1x4.....lin. ft. <b>13<sup>c</sup></b>	1x4.....lin. ft. <b>7<sup>c</sup></b>
1x6.....lin. ft. <b>23<sup>1/2</sup><sup>c</sup></b>	1x6.....lin. ft. <b>13<sup>c</sup></b>
2x4.....lin. ft. <b>22<sup>c</sup></b>	2x4.....lin. ft. <b>16<sup>c</sup></b>
2x6.....lin. ft. <b>36<sup>c</sup></b>	2x6.....lin. ft. <b>24<sup>1/2</sup><sup>c</sup></b>
2x8.....lin. ft. <b>48<sup>c</sup></b>	2x8.....lin. ft. <b>36<sup>c</sup></b>
4x4.....lin. ft. <b>52<sup>c</sup></b>	

### CEDAR ENTRANCE DOORS

No. 1300	No. 764	No. 791	No. 751
<b>49<sup>70</sup></b> ea.	<b>66<sup>30</sup></b> ea.	<b>73<sup>89</sup></b> ea.	<b>90<sup>35</sup></b> ea.

Cedar Entrance Doors last through time and weather. They combine quality materials, styling and price that mean real value. All prices quoted are for 2'10"x6'10"x1 3/4". Hardware is not included. Several styles are available.

### CHAIN LINK FENCING



Accessories:  
Main Posts 6 1/2' **\$4.32** Ea.  
Main Post Cap **49<sup>c</sup>** Ea.  
Line Post 6 1/2' **\$3.48** Ea.  
Line Post 7 1/2' **\$4.00**  
Sidewalk Gate 42"Wx48"H **\$23.97** Ea.  
42"Wx60"H **\$39.11** Ea.

FABRIC	GREEN VINYL
50x48" 13/11 Ga. x 2"	<b>28<sup>33</sup></b> Roll
50x60" 13/11 Ga. x 1 1/2"	<b>51<sup>49</sup></b> Roll

SAVEWAY STOCKS A COMPLETE LINE OF CHAIN LINK FENCING ACCESSORIES. ABOVE ARE SAMPLES ONLY.

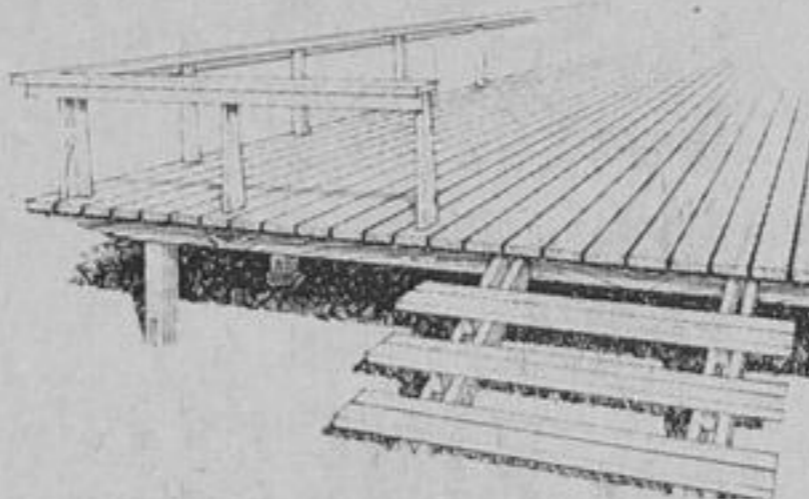
### STEEL FENCE PANELS

These steel fence panels require very little maintenance. They are easy to install on a wood frame, and are available in a white or redwood finish.



12" x 45"	<b>1<sup>55</sup></b> ea.
12" x 57"	<b>1<sup>99</sup></b> ea.
12" x 69"	<b>2<sup>39</sup></b> ea.
Caps	<b>35<sup>c</sup></b> ea.
Nails (65 per pkg.)	<b>78<sup>c</sup></b> ea.

### PATIO DECKS



This deck is only one of the many that you can build for your home or cottage. Stop in to Saveway soon and pick up your free "Patio Deck" brochure. It will tell you how to build many different decks of all shapes and sizes.

### SHINGLES

•210 lb. per Sq.  
•No. 1 quality  
•I.K.O. Brand  
•C.M.H.C. Approved  
•Available in a variety of colours

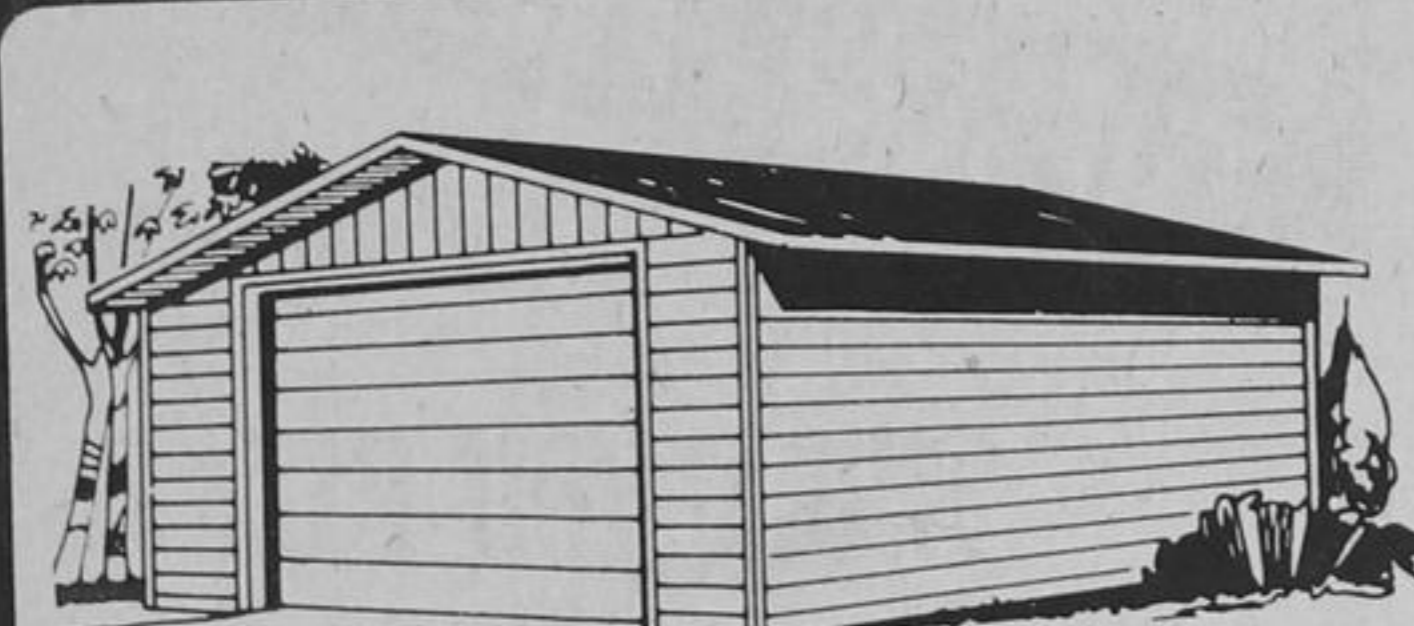
**15<sup>44</sup>** Square  
Square covers 100 sq. ft.

### PICNIC TABLE



This 70" cedar table has 2" thick top and seats 6 people. It is pre-cut and ready for easy assembly in the back yard or at the cottage.

**32<sup>95</sup>** Ea.

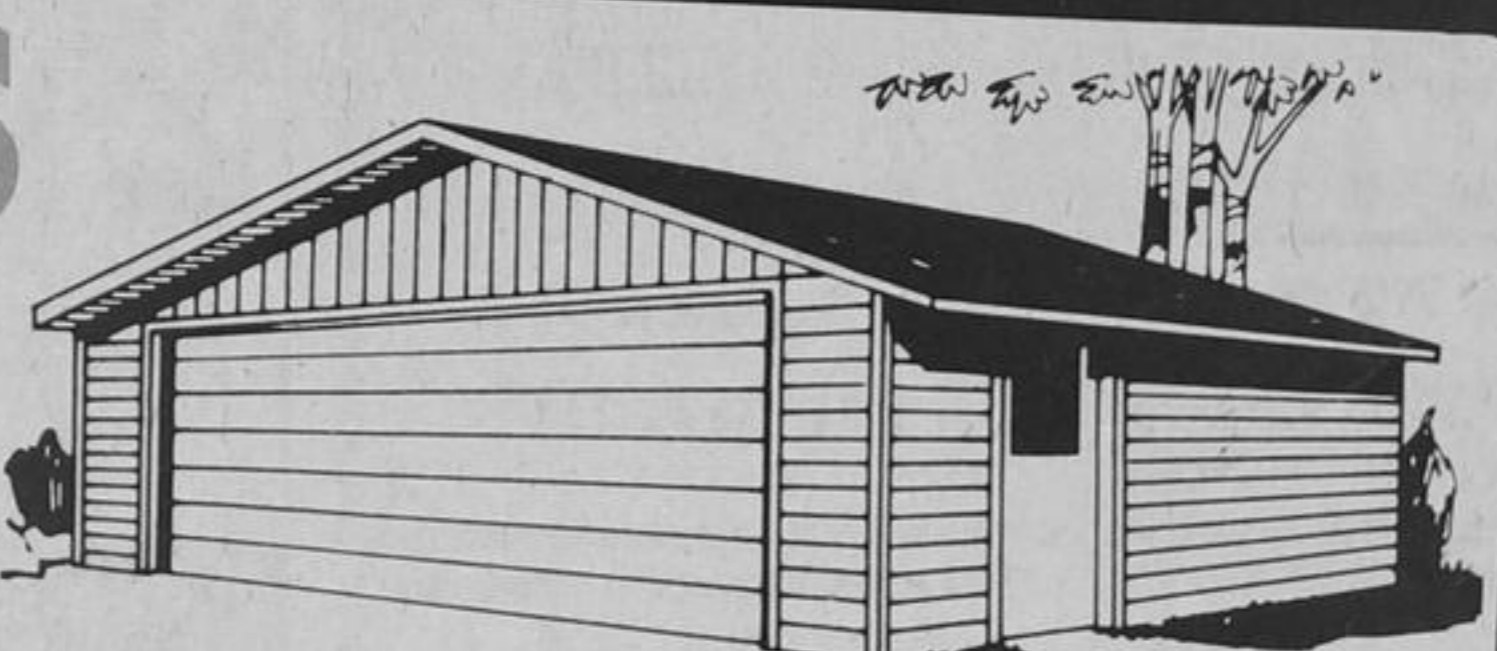


12' x 22 Single Car Model

**699<sup>00</sup>** Ea.

### GARAGES

Here's a real buy for the do-it-yourselfer, Saveway Garage Packages come complete with all material including 24" o/c framing, plates, girds, studs, 2x4 rafters, fascia, 8" Dolly Varden bevel siding, roof sheathing, soffit, asphalt shingles, nails and overhead steel garage door. All this plus plans and instructions for assembly. (Building codes may vary, check in your municipality).

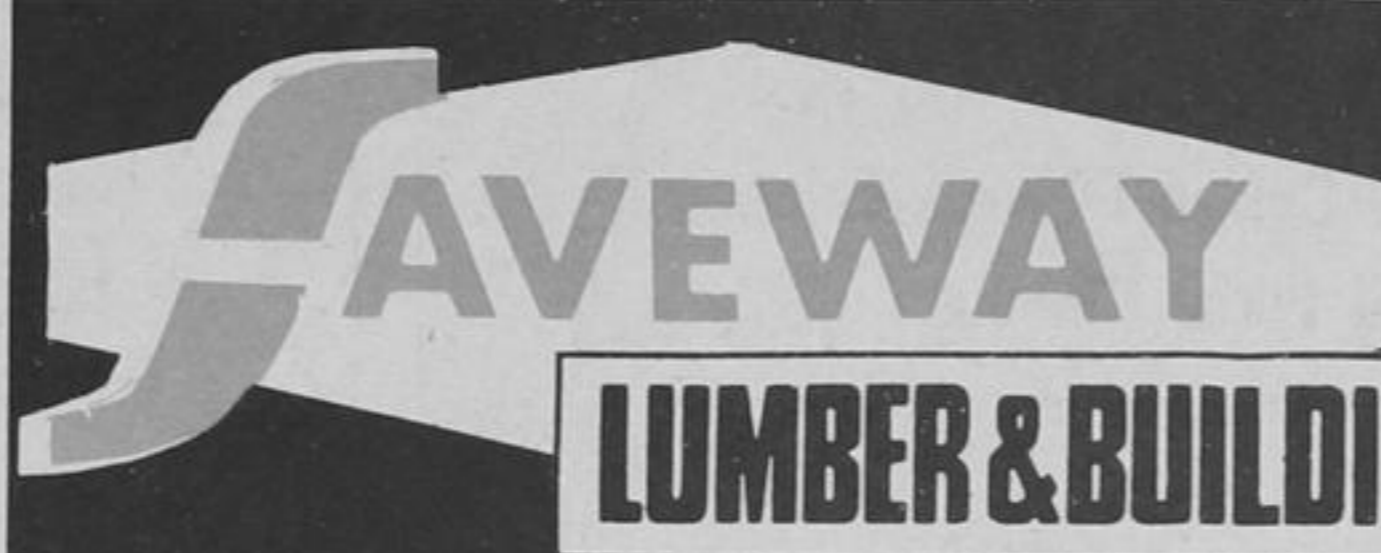


22' x 22' Two Car Model

**1151<sup>11</sup>** Ea.

### STORE HOURS

Monday Wednesday 8 a.m. to 6 p.m.  
Thursday & Friday 8 A.M. to 9 P.M.  
Saturday 8 A.M. to 5 P.M.



WE WELCOME



## LUMBER & BUILDING SUPPLIES



Plenty of **FREE** Parking

THESE PRICES IN EFFECT WEDNESDAY MAY 5 to TUESDAY MAY 11 OR WHILE QUANTITIES LAST AT OUR HWY. 7 & COSTA RD. STORE