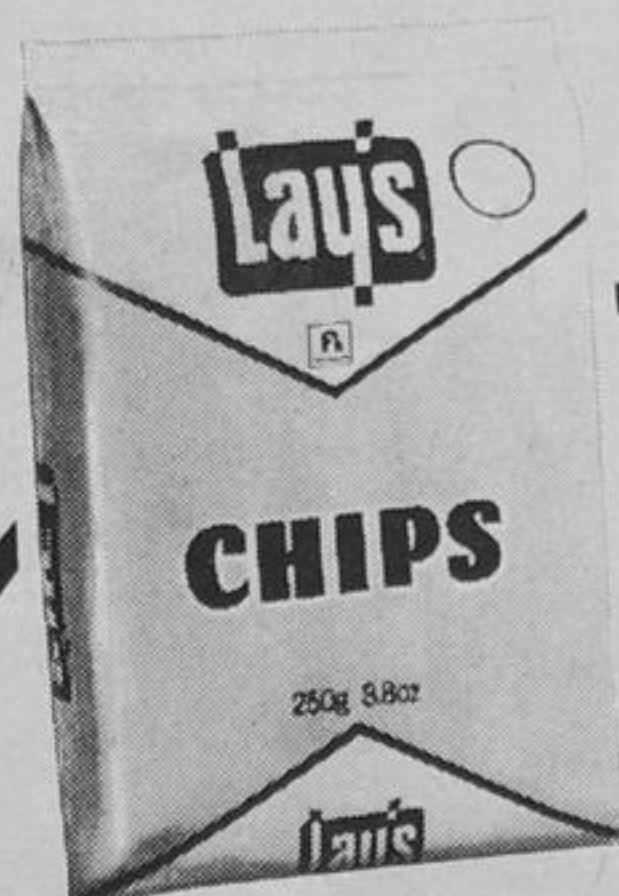


Merry Christmas



E.D. Smith garden cocktail

34¢
28 fl. oz. bottle



plain or ruffles

Lay's potato chips

79¢
250 g pkg.



Cloverleaf mandarin oranges

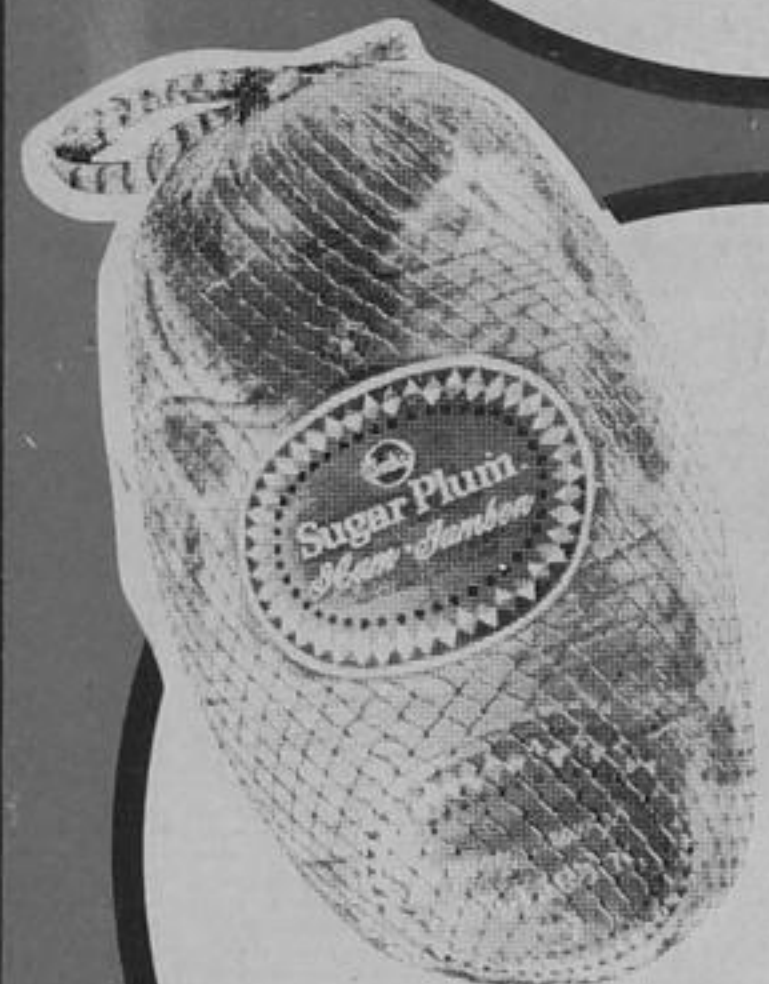
28¢
10 fl. oz. tin



Red Rose tea bags orange pekoe (2 cup)

99¢
60's pkg.

beef boneless bottom round steaks or roasts **158** lb.



SEMI BONELESS Swift's Sugar Plum cooked smoked hams

halves **178** lb.

168 whole lb.

- FROZEN CANADA GRADE A young ducks LB. **94^c**
- FRESH "COUNTRY CUT" fryer parts 3 HINDQUARTERS WITH BACK, 3 FRONT QUARTERS WITH BACK, 3 WINGS, 2 GIBLETS LB. **76^c**
- SWIFT'S SUGAR PLUM COOKED SMOKED BONELESS DINNER HAMS VAC PAC LB. **2⁰⁸**
- Z & W FOODS SHANK PORTION QUARTERS COOKED SMOKED HAMS VAC PAC LB. **1⁵⁸**
- ZIGGY'S COOKED SMOKED PICNIC STYLE PORK SHOULDERS LB. **1²⁴**
- SWIFT'S PREMIUM OVEN ROASTING CORNED BEEF BRISKET LB. **1⁷⁷**
- VALUPLUS or SWIFT'S PREMIUM BRAND SKINLESS WIENERS 1 LB. PKG. **78^c**
- LOBLAWS PURE (IDEAL FOR POULTRY DRESSING) PORK SAUSAGE MEAT 1 LB. ROLL **78^c**
- SWIFT'S PREMIUM SAUSAGE BROWN & SERVE 8 OZ. PKG. **94^c**

- BEEF STEAKS or ROASTS BONELESS TOP ROUND LB. **1⁶⁸**
- SWIFT'S PREMIUM LAZY MAPLE or SUGAR PLUM SLICED SIDE BACON 1 LB. PKG. **1⁷²**
- LOBLAWS SLICED SIDE BACON 1 LB. PKG. **1⁷²**
- SHOPSY'S CORNED BEEF or PASTRAMI 4 2 OZ. PKGS. **1²⁸**
- SWIFT'S PREMIUM or LOBLAWS COOKED HAM 6 OZ. PKG. SLICED EACH **1¹⁸**
- LOBLAWS MACARONI & CHEESE, LUNCHEON MEAT, MOCK CHICKEN LOAF or BOLOGNA SLICED COOKED MEATS 6 OZ. PKG. EACH **48^c**
- LOBLAWS BRAUNSCHWEIGER VAC PAC LIVER SAUSAGE LB. **95^c**
- VALUPLUS BRAND POLISH SAUSAGE VAC PAC LB. **1¹⁸**
- SAU-SEA BRAND FROZEN SHRIMP COCKTAIL 2 4 OZ. JARS **89^c**
- SCHNEIDERS MINCEMEAT PIES 16 OZ. EACH **94^c**

MINI ZIGGY—6 VARIETIES COOKED MEAT CHUBS 8 OZ. EACH **98^c**

Swift's Butterball turkeys frozen deep basted predressed young Canada grade A

over 20 lbs.

88¢ lb.



Swift's Butterball turkeys frozen deep basted predressed young Canada grade A

10 to 14 lbs.

98¢ lb.

young turkeys frozen predressed Canada grade A

10 to 14 lbs.

84¢ lb.